

Appendix 1: Provincial Statistics

Table 1 provides a summary of cumulative data per site, per province, from the onset of the programme. This data was obtained from the learning sites and all efforts were made to verify the quality of the data.

Province	Site	Start Date	Average no. of booking visits p/m	Average no. of pregnant women counselled p/m	Average no. of HIV tests p/m	Average no. of HIV+ pregnant women identified p/m	Cumulative Counselling uptake rate (i.e. average p/m)	Cumulative Testing uptake rate (average p/m)	Cumulative HIV positive rate amongst pregnant women
Gauteng	Nataispruit	May 2001	302	302	205	68	100%	68%	33%
	Kalafong	June 2001	295	295	69	30	100%	23%	43%
Western Cape	Guguletu	Jan 2001	377	372	304	65	99%	81%	21%
	Paarl District	May 2001	273	261	261	22	96%	96%	8%
Northern Province	Mankweng	Aug 2001	725	331	134	23	46%	18%	17%
	Siloam	Mid Nov 2001	82	17	14	0	21%	17%	0%
Mpumalanga	Shongwe	Sept 2001	102	19	19	9	19%	19%	47%
	Evander	Oct 2001	138	35	31	12	25%	22%	39%
Free State	Virginia	July 2001	341	246	122	39	72%	36%	32%
	Frankfort	Aug 2001	204	133	98	23	65%	48%	23%
KwaZulu-Natal	Durban	June 2001	997	997	814	355	100%	82%	44%
	Pietermaritzburg	June 2001	725	725	510	171	100%	70%	34%
Eastern Cape	East London Complex	Oct 2001	949	585	266	66	62%	28%	25%
	Umziminkulu	Oct 2001	67	67	60	21	100%	90%	35%

Province	Site	Start Date	Average no. of booking visits p/m	Average no. of pregnant women counselled p/m	Average no. of HIV tests p/m	Average no. of HIV+ pregnant women identified p/m	Cumulative Counselling uptake rate (i.e. average p/m)	Cumulative Testing uptake rate (average p/m)	Cumulative HIV positive rate amongst pregnant women
Northern Cape	Kimberley	Aug 2001	153	37	37	12	24%	24%	32%
	De Aar ^a	Aug 2001	46	79	42	2	^a 172%	91%	5%
North West	Tlhabane	July 2001	98	26	26	11	27%	27%	42%
	Lehurutshe	July 2001	208	130	121	20	63%	58%	17%
TOTAL			6 082	4 657	3 133	949	77%	51%	30%

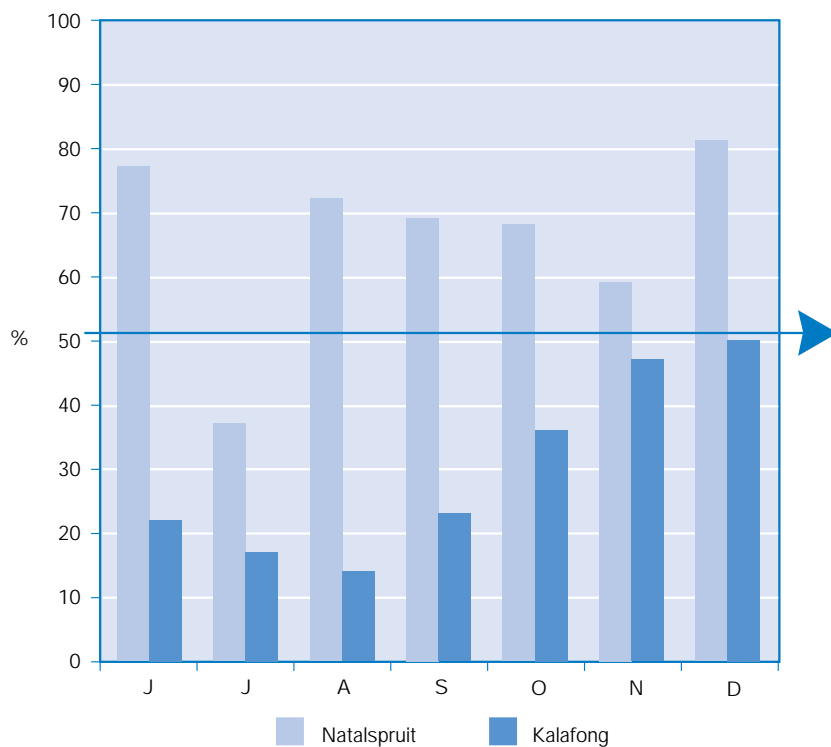
Notes on Table 1: HIV positive rate amongst pregnant women refers to the percentage of women who consented to voluntary testing, and tested positive. (Expressed as an average per month since the onset of the programme)

^a All antenatal women were offered VCT with onset of programme – not only first visits

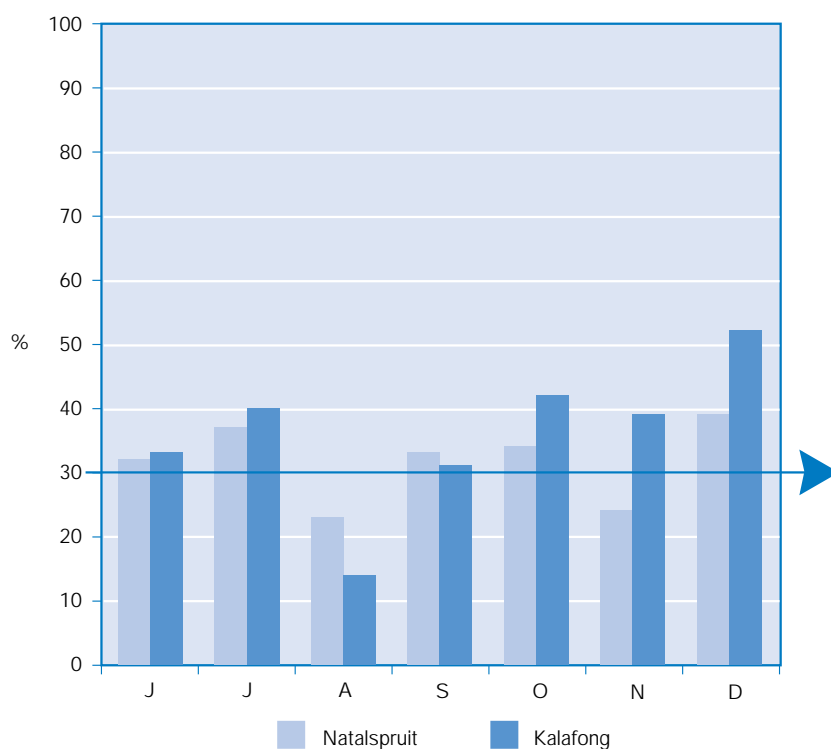
Gauteng:

= National Average

Voluntary Testing Uptake: Gauteng
June - December 2001



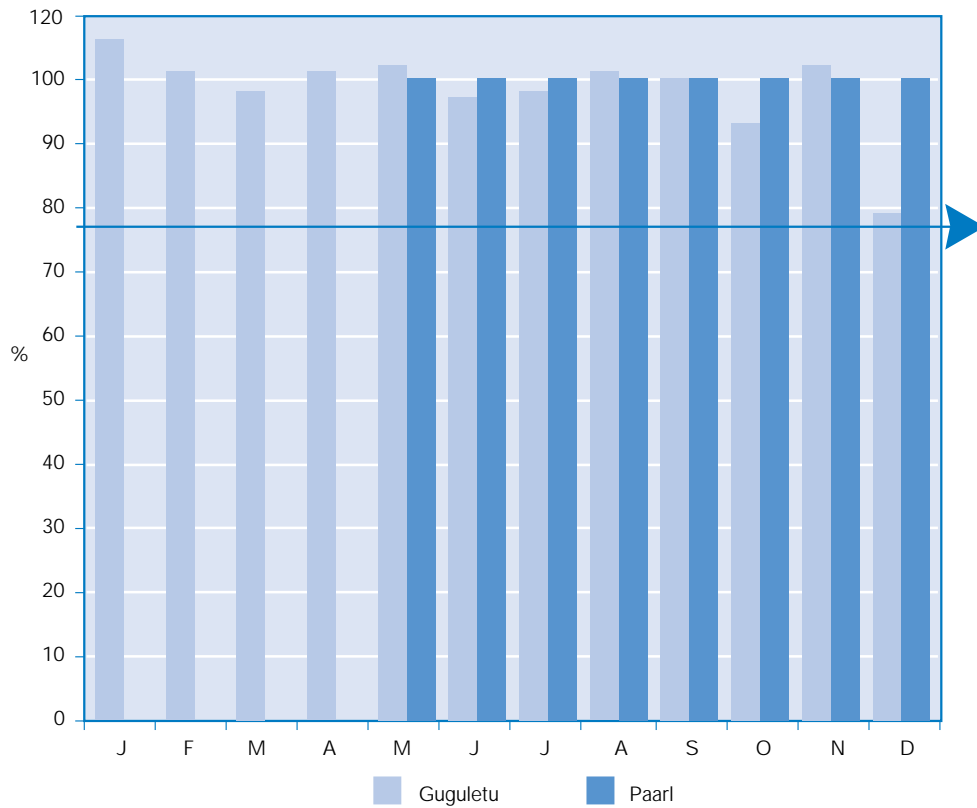
HIV positive rate amongst pregnant women: Gauteng
June - December 2001



Western Cape:

= National Average

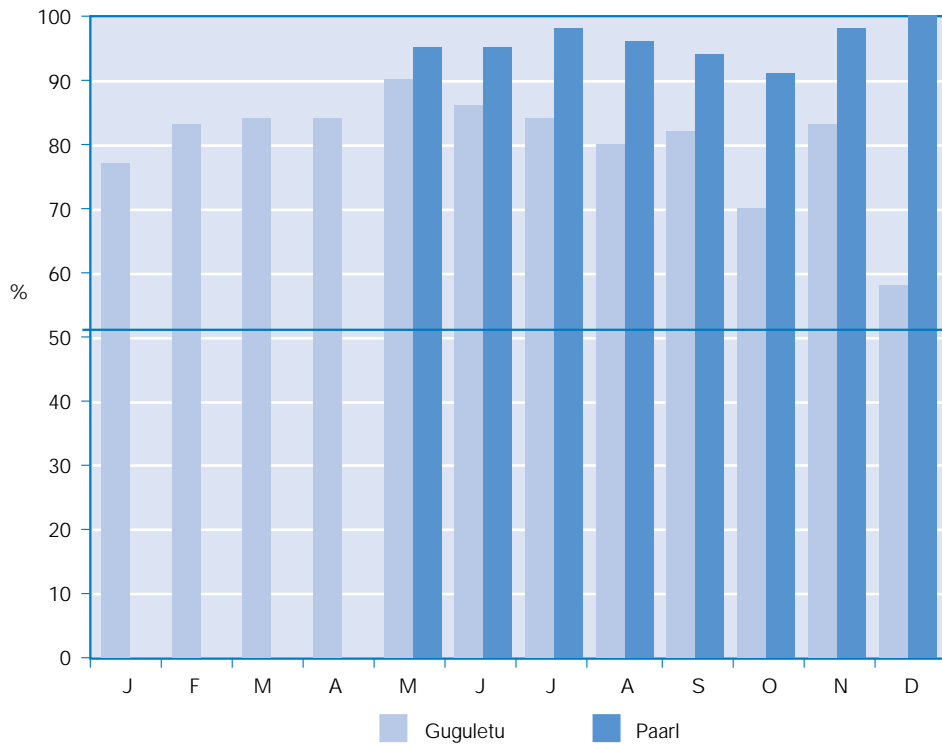
Voluntary Counselling Uptake: Western Cape January - December 2001



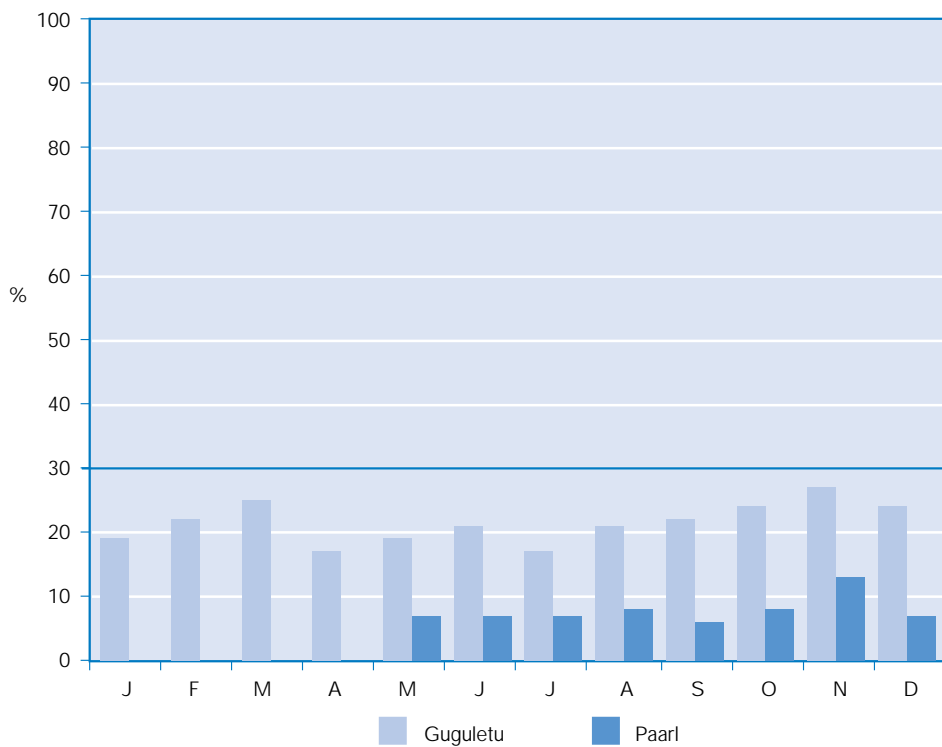
Notes: VC uptake is calculated to determine the number of pregnant women who accepted Voluntary Counselling during their first antenatal visit. However an uptake figure of over 100% indicates that women entered the programme during follow-up antenatal visits. These figures should stabilise over a period of time. It might also be an indication that pregnant women from other facilities are utilising the learning sites to access the PMTCT programme.

Voluntary Testing Uptake: Western Cape
January - December 2001

= National Average



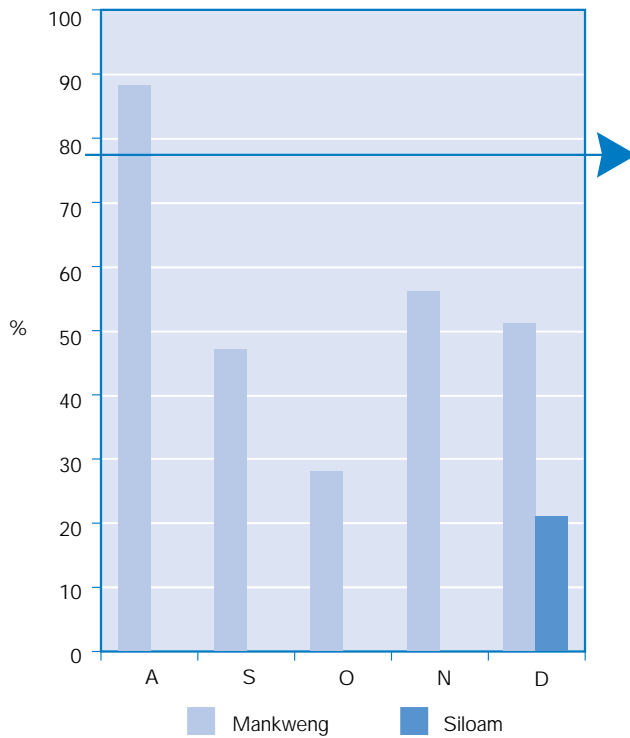
HIV positive rate amongst pregnant women: Western Cape
January - December 2001



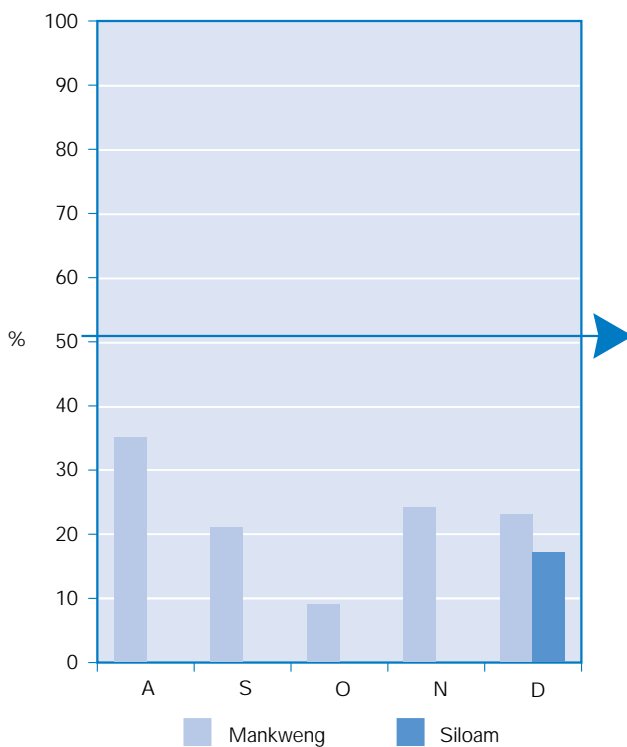
Northern Province:

= National Average

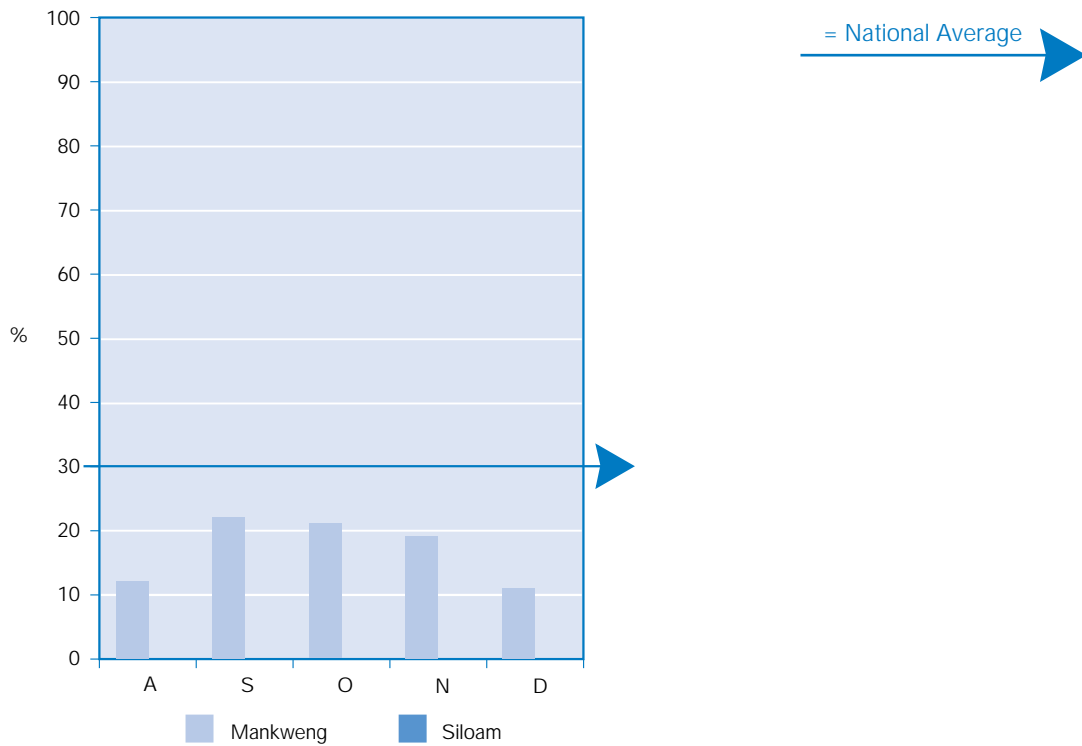
Voluntary Counselling Uptake: Northern Province
August - December 2001



Voluntary Testing Uptake: Northern Province
August - December 2001

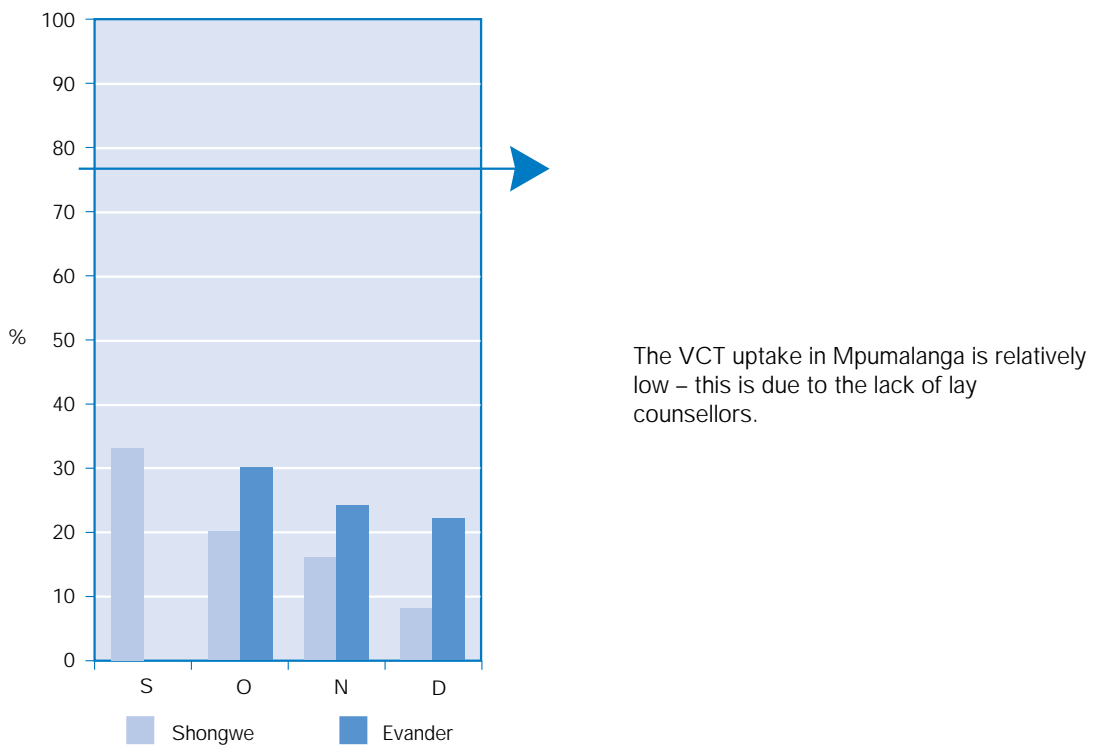


HIV positive rate amongst pregnant women: Northern Province
August - December 2001



Mpumalanga:

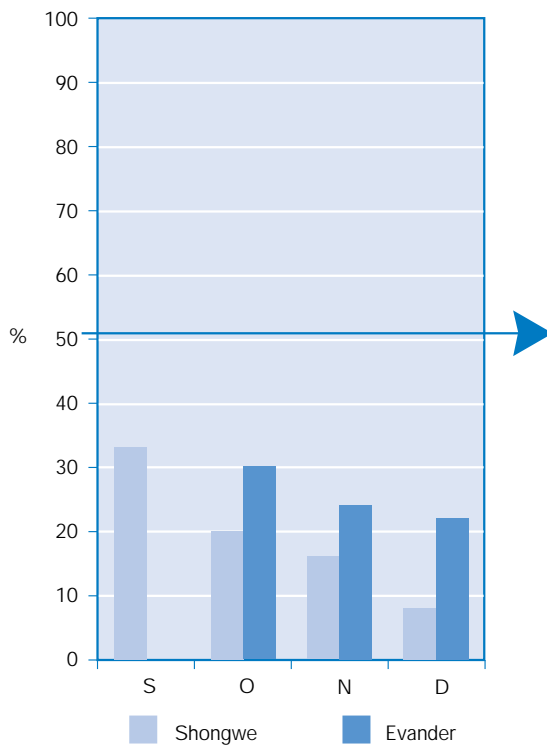
Voluntary Counselling Uptake: Mpumalanga
September - December 2001



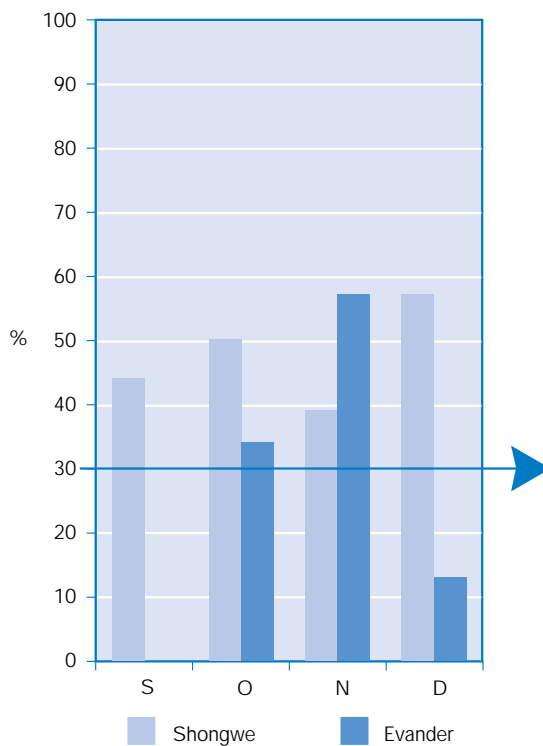
The VCT uptake in Mpumalanga is relatively low – this is due to the lack of lay counsellors.

Voluntary Testing Uptake: Mpumalanga
September - December 2001

= National Average



HIV positive rate amongst pregnant women: Mpumalanga
September - December 2001



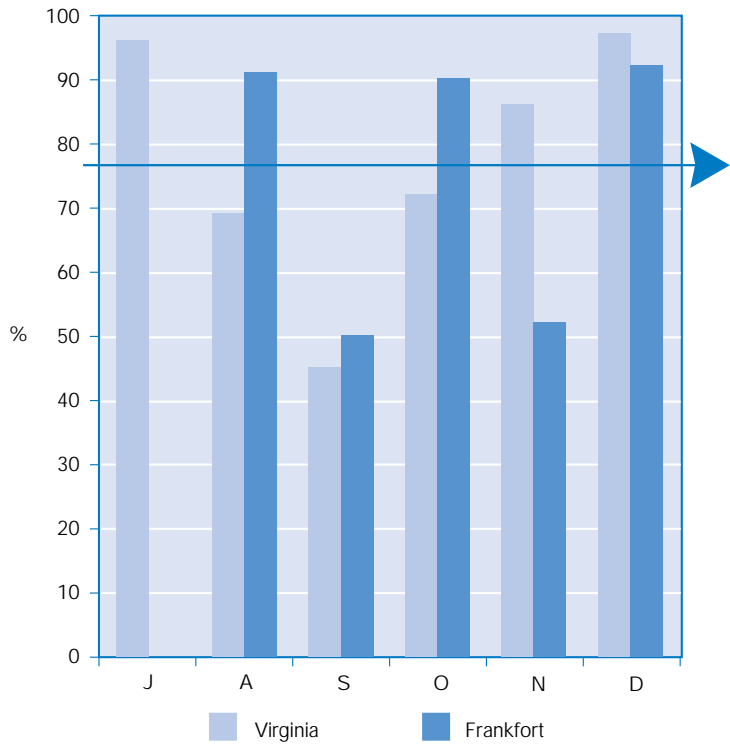
Although the HIV positive rate seems high, it is important to note that the number of pregnant women who voluntarily accepted counselling and testing was very low.

Free State:

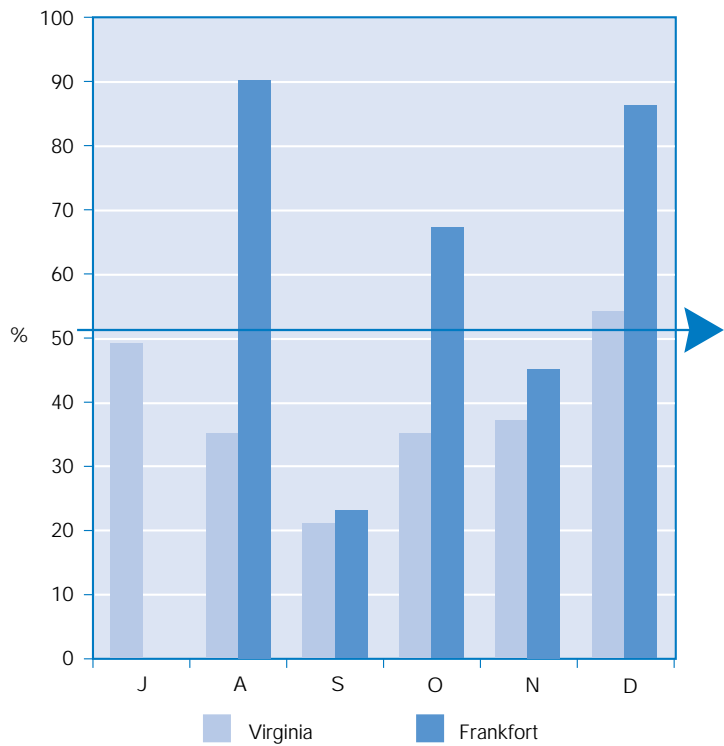
= National Average



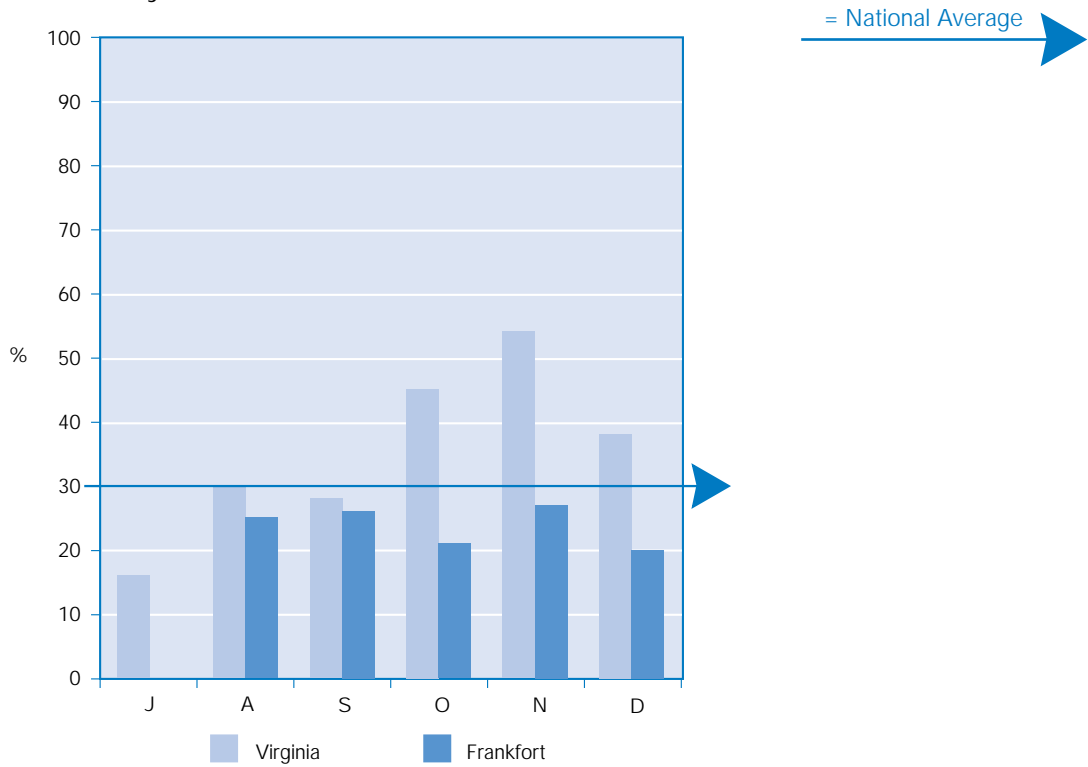
Voluntary Counselling Uptake: Free State
July - December 2001



Voluntary Testing Uptake: Free State
July - December 2001



HIV positive rate amongst pregnant women: Free State July - December 2001

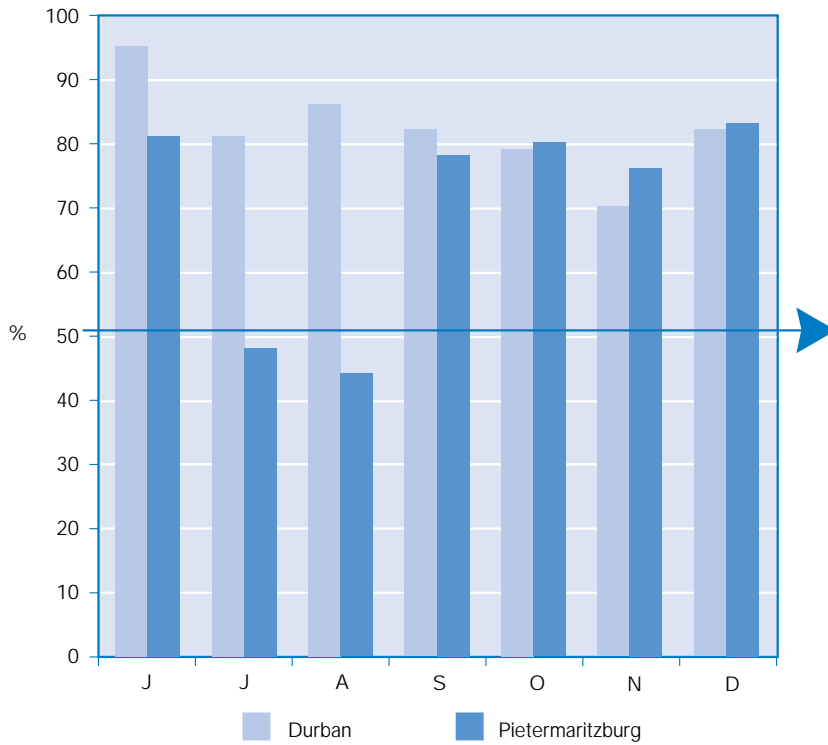


The HIV positive rate amongst pregnant women in Frankfort seems to be about 10% lower than in Virginia. Virginia is predominately a mining area while Frankfort is classified as rural, which may explain the difference.

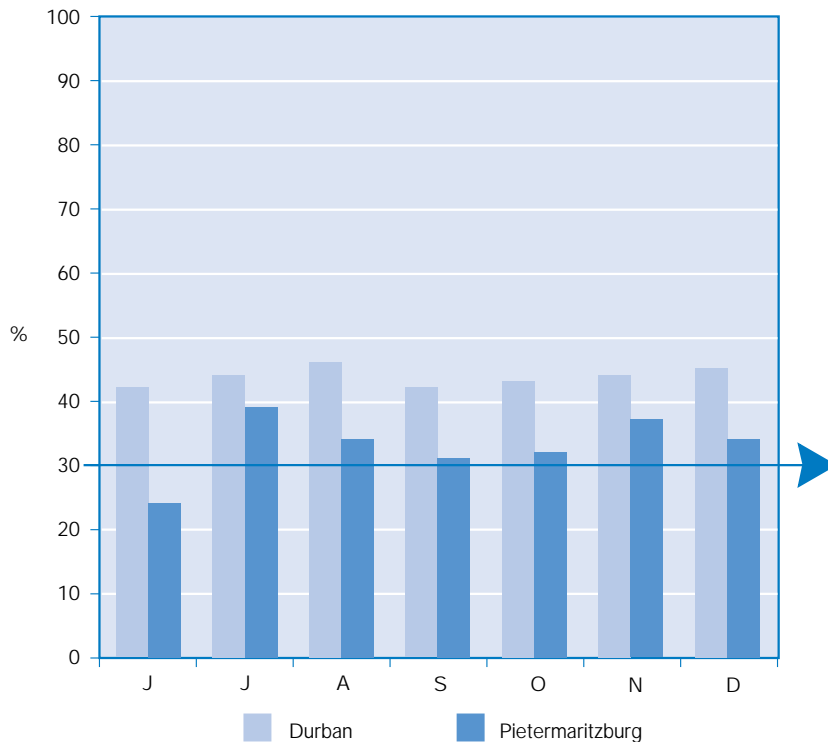
KwaZulu-Natal:

= National Average

Voluntary Testing Uptake: KwaZulu-Natal
June - December 2001



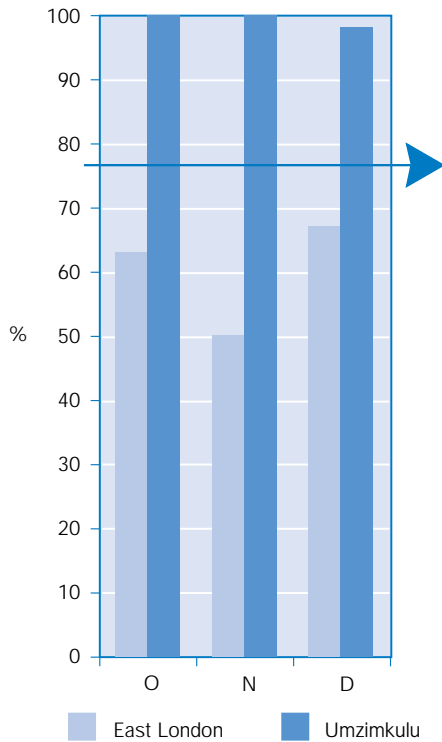
HIV positive rate amongst pregnant women: KwaZulu-Natal
June - December 2001



Eastern Cape:

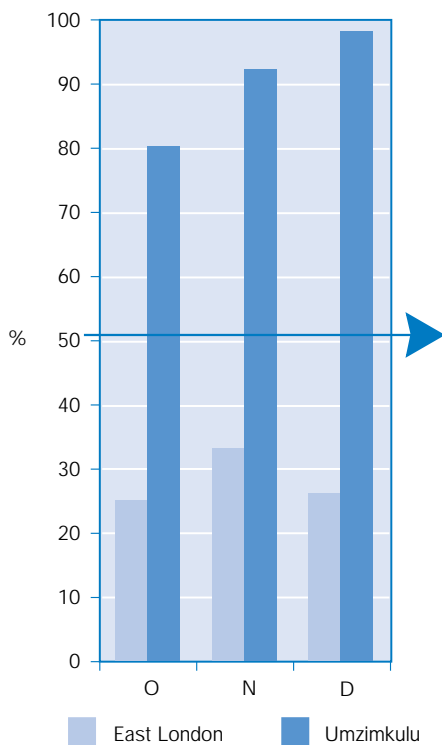
= National Average

Voluntary Counselling Uptake: Eastern Cape
October - December 2001

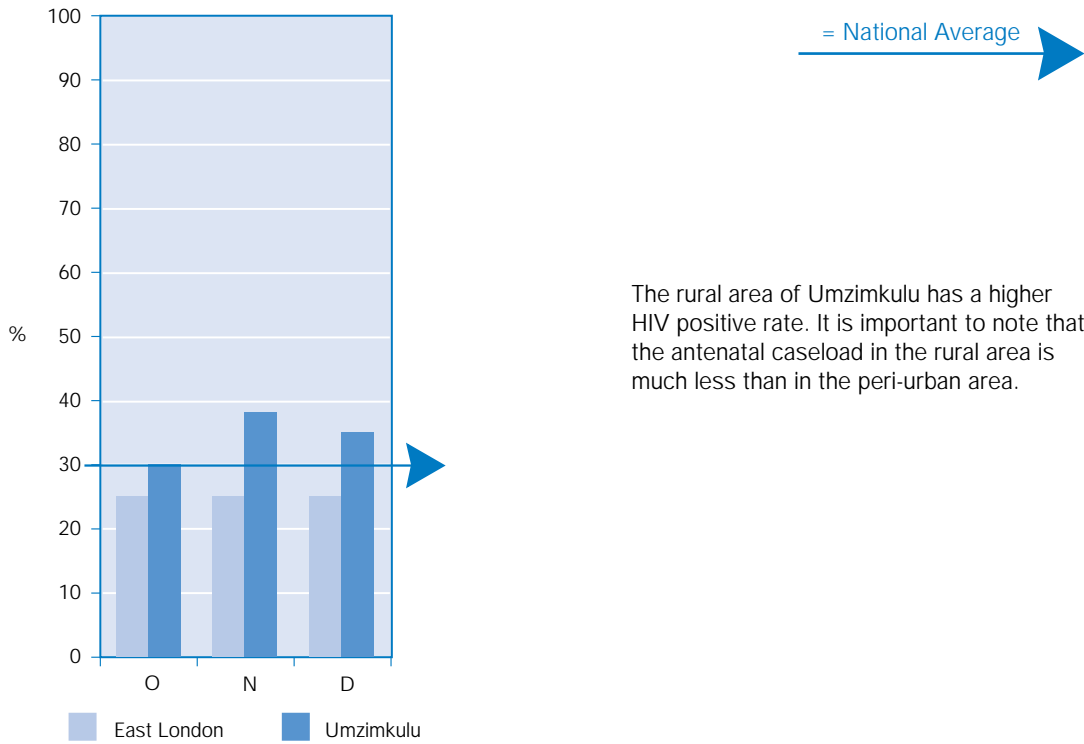


The percentage of pregnant women consenting to counselling for HIV in Umzimkulu (rural area) is much higher than in the East London Complex. However the EL complex is serving approximately 13 times more pregnant women per month.

Voluntary Testing Uptake: Eastern Cape
October - December 2001



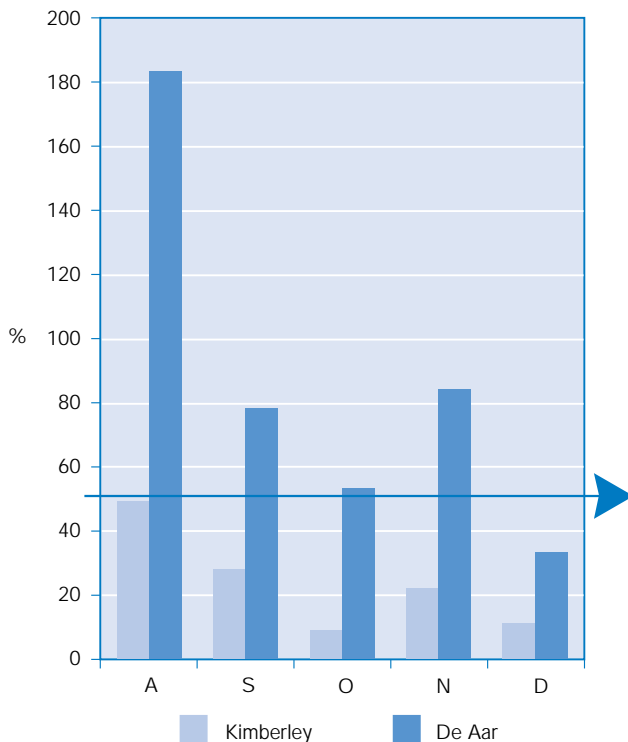
HIV positive rate amongst pregnant women: Eastern Cape
October - December 2001



The rural area of Umzimkulu has a higher HIV positive rate. It is important to note that the antenatal caseload in the rural area is much less than in the peri-urban area.

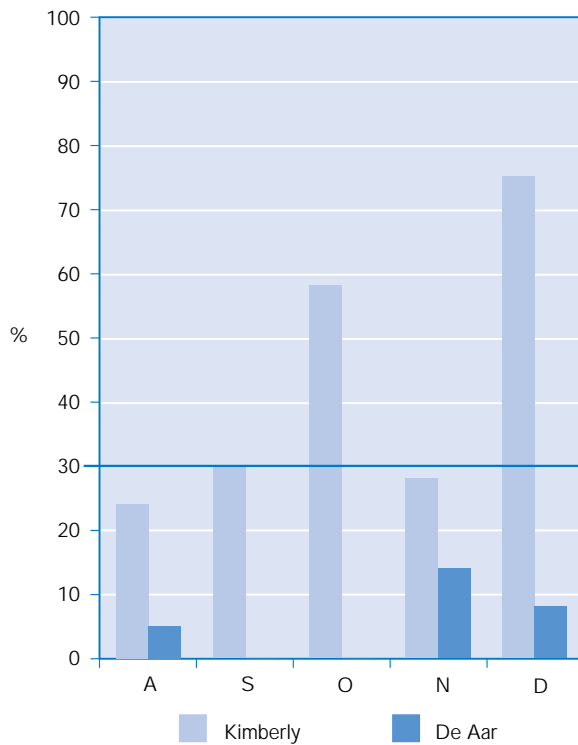
Northern Cape:

Voluntary Testing Uptake: Northern Cape
August - December 2001



The percentage of pregnant women agreeing to VCT in De Aar is very high in August. This is due to the fact that with the onset of the programme, the service was offered to all pregnant women. The indicator is however calculated with 'First antenatal booking visits' as the denominator. The 'normal' pattern should start emerging approximately 6-7 months after the programme onset. Another factor to consider is the influx of pregnant women from other clinics to the learning site.

HIV positive rate amongst pregnant women: Northern Cape
August - December 2001

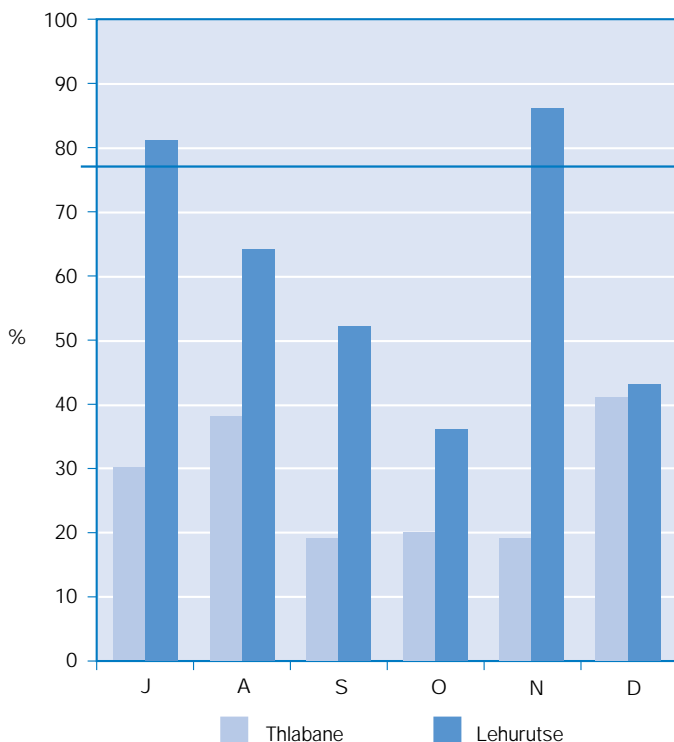


= National Average

The HIV positive rate for Kimberley seems very high. The number of pregnant women tested was in fact very low. High HIV+ rates with low VCT uptake are not necessarily a true indication of the HIV prevalence. It is expected that the HIV+ rate will decrease with an increase in VCT uptake.

North West:

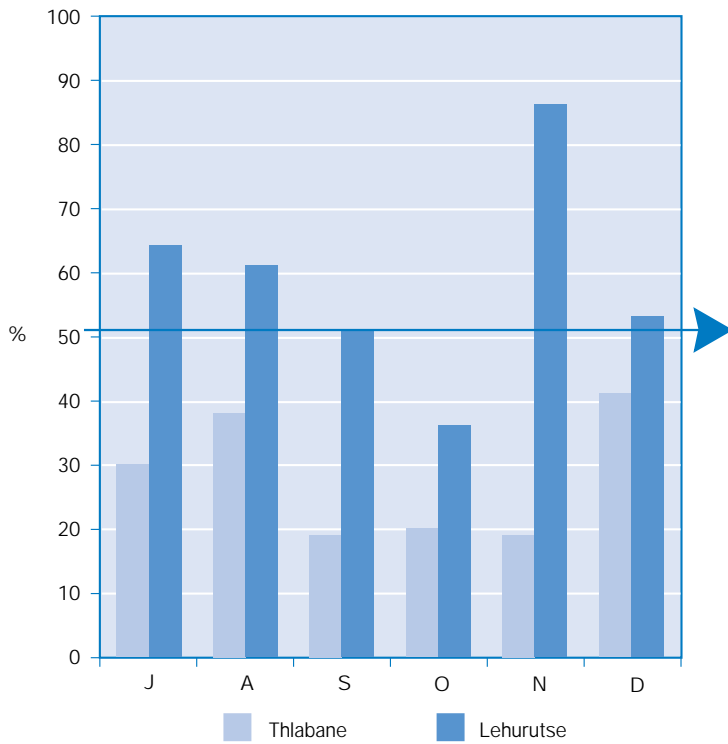
Voluntary Counselling Uptake: North West
July - December 2001



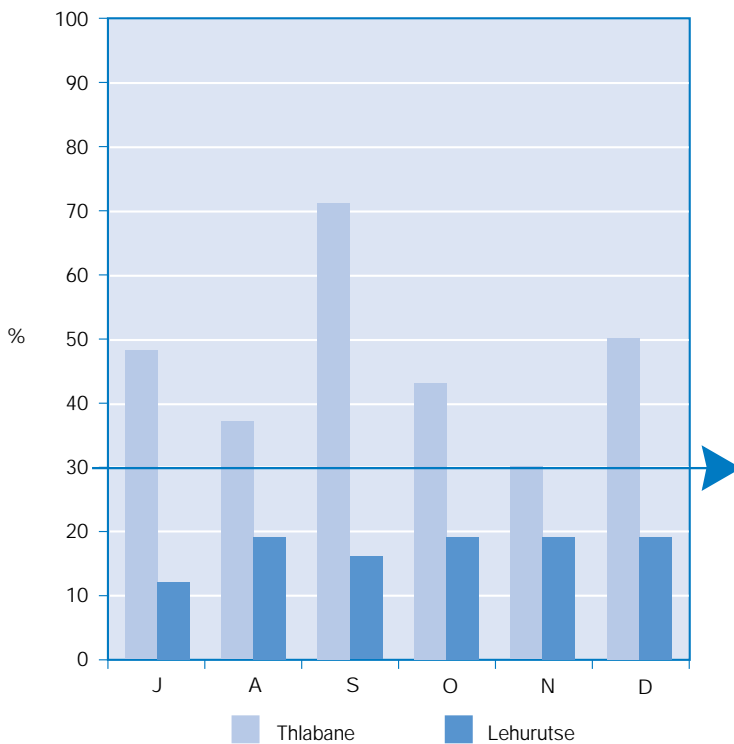
The VCT uptake in Thlabane, the urban site, seems very low. The quality of the data is also questionable as a major difference was found between data collected for the PMTCT programme and routinely collected data for PHC. The main reason for this seems to be the constant change in data collection forms. The VCT uptake in November for Lehurutse seems to be higher than the rest. The number of clients seen during this month was however significantly lower than the other months.

Voluntary Testing Uptake: North West
July - December 2001

= National Average



HIV positive rate amongst pregnant women: North West
July - December 2001



The high HIV positive rate for Thlabane can be misleading, as the number of pregnant women tested was very low.

Table 2

Province	Site	Total no. of HIV+ women identified	Total no. of HIV+ women delivered with NVP	Average no. of HIV+ women identified p/month	Average no. of HIV+ women delivering with NVP p/month	Percentage of HIV+ positive women identified, delivered with NVP since onset of program
Gauteng	Natalspruit	473	*	68	*	*
	Kalafong	182	*	30	*	*
Western Cape	Guguletu	779	210	65	18	27%
	Paarl District	176	83	22	10	47%
Northern Province	Mankweng	115	14	23	3	12%
	Siloam	0	0	0	0	0
Mpumalanga	Shongwe	35	19	9	4	54%
	Evander	36	9	12	3	25%
Free State	Virginia	234	100	39	17	43%
	Frankfort	114	34	23	7	30%
KwaZulu-Natal	Durban	2485	793	355	113	32%
	Pietermaritzburg	1198	457	171	65	38%
Eastern Cape	East London Complex	199	87	66	29	44%
	Umzimkulu	62	24	21	8	39%
Northern Cape	Kimberley	60	25	12	5	42%
	De Aar	12	6	2	1	50%
North West	Thlabane	65	32	11	5	49%
	Lehurutshe	120	39	20	7	33%
TOTAL		6345	*1932	949	295	30%

* Data not available for Gauteng. Totals thus exclude Gauteng.