

## DEPARTMENT OF TRANSPORT

NO. 826

9 September 2021

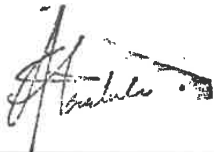
**THE SOUTH AFRICAN NATIONAL ROADS  
AGENCY SOC LIMITED**

Registration No: 1998/009584/30

**DECLARATION AMENDMENT OF NATIONAL ROAD N2 SECTION 20X**

AMENDMENT OF DECLARATION No. 1505 OF 2016.

By virtue of section 40(1)(b) of the South African National Roads Agency Limited and the National Roads Act 1998 (Act No. 7 of 1998), I hereby amend Declaration No. 1505 of 2016 by substituting it in its entirety, with the accompanying sheets 1 to 40 of Plan No. P1008/17.

**(National Road N2 Section 20X: Mount Frere – Brooksnek)****MINISTER OF TRANSPORT**

**DEPARTEMENT VAN VERVOER**

NO. 826

9 September 2021

**DIE SUID-AFRIKAANSE NASIONALE  
PADAGENTSKAP MSB BEPERK**

Registrasie No: 1998/009584/30

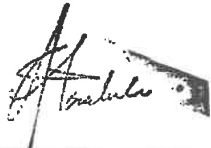
---

**VERKLARING WYSIGING VAN NASIONALE PAD N2 SEKSIE 20X**

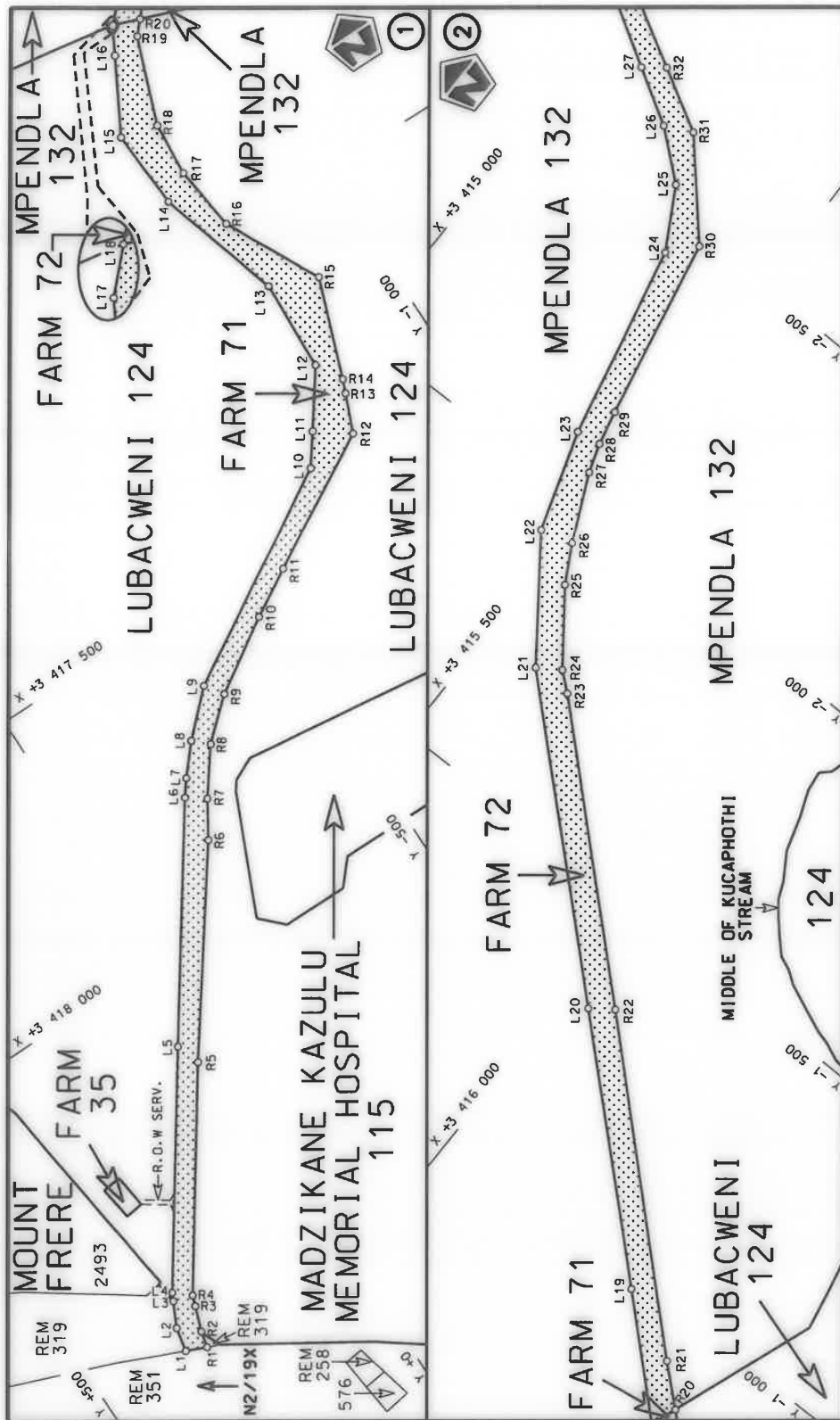
WYSIGING VAN VERKLARING No. 1505 VAN 2016.

Kragtens Artikel 40(1)(b) van die Suid-Afrikaanse Nasionale Padagentskap Beperk en Nasionale Paaie Wet 1998 (Wet No. 7 van 1998), wysig ek hiermee Verklaring No. 1505 van 2016 deur dit in sy geheel te vervang, met bygaande velle 1 tot 40 van Plan No. P1008/17.

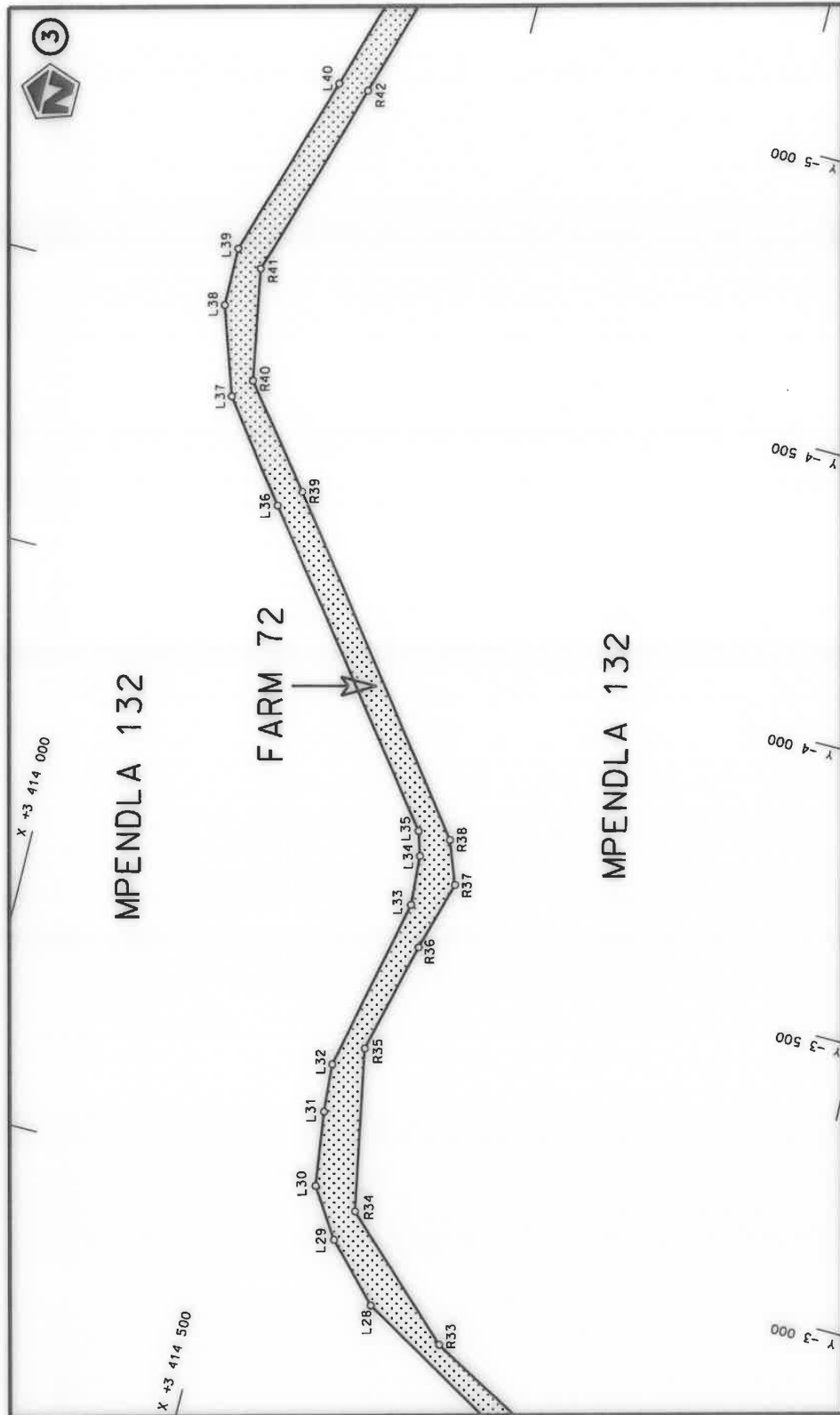
**(Nasionale Pad N2 Seksie 20X: Mount Frere – Brooksnek)**



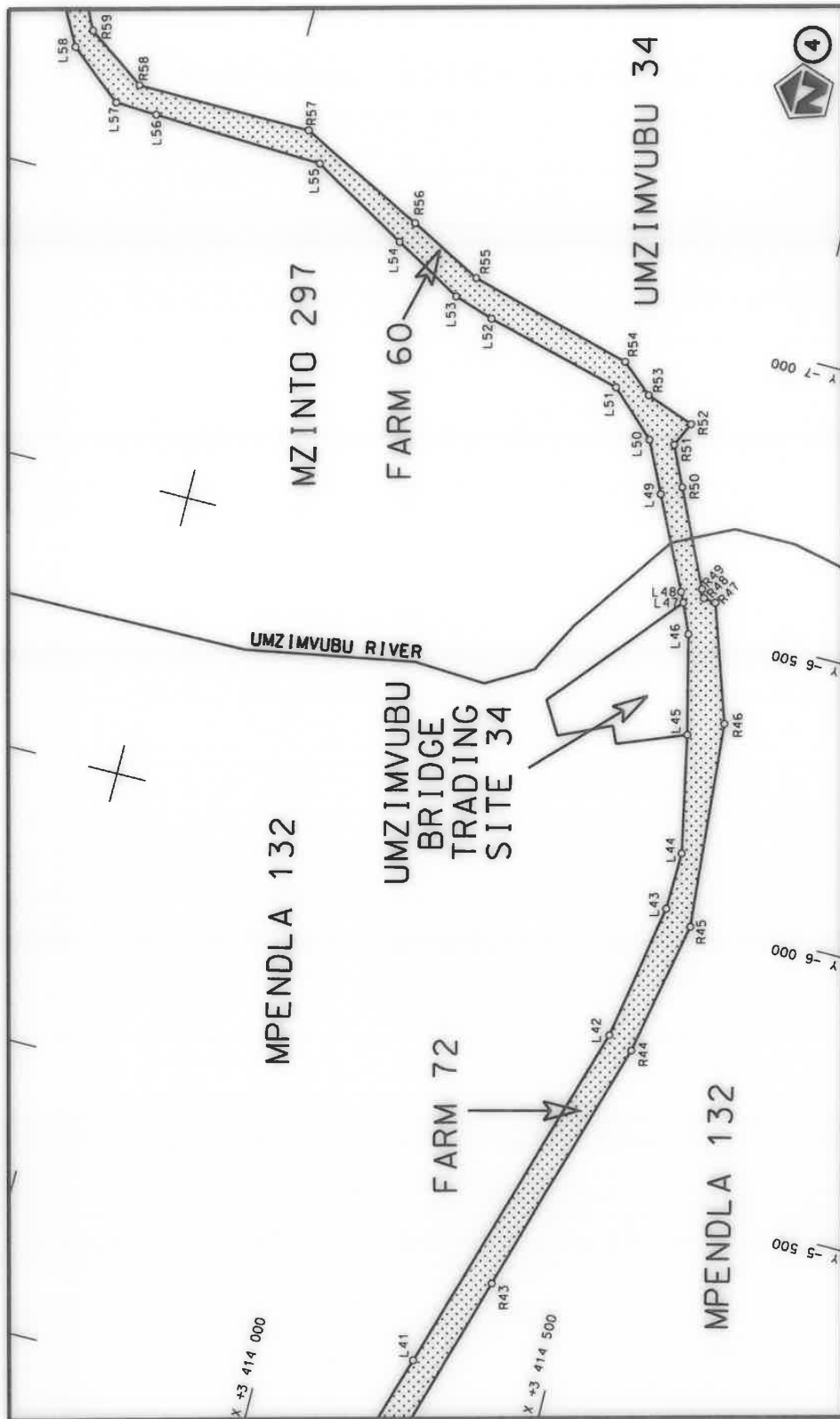
**MINISTER VAN VERVOER**



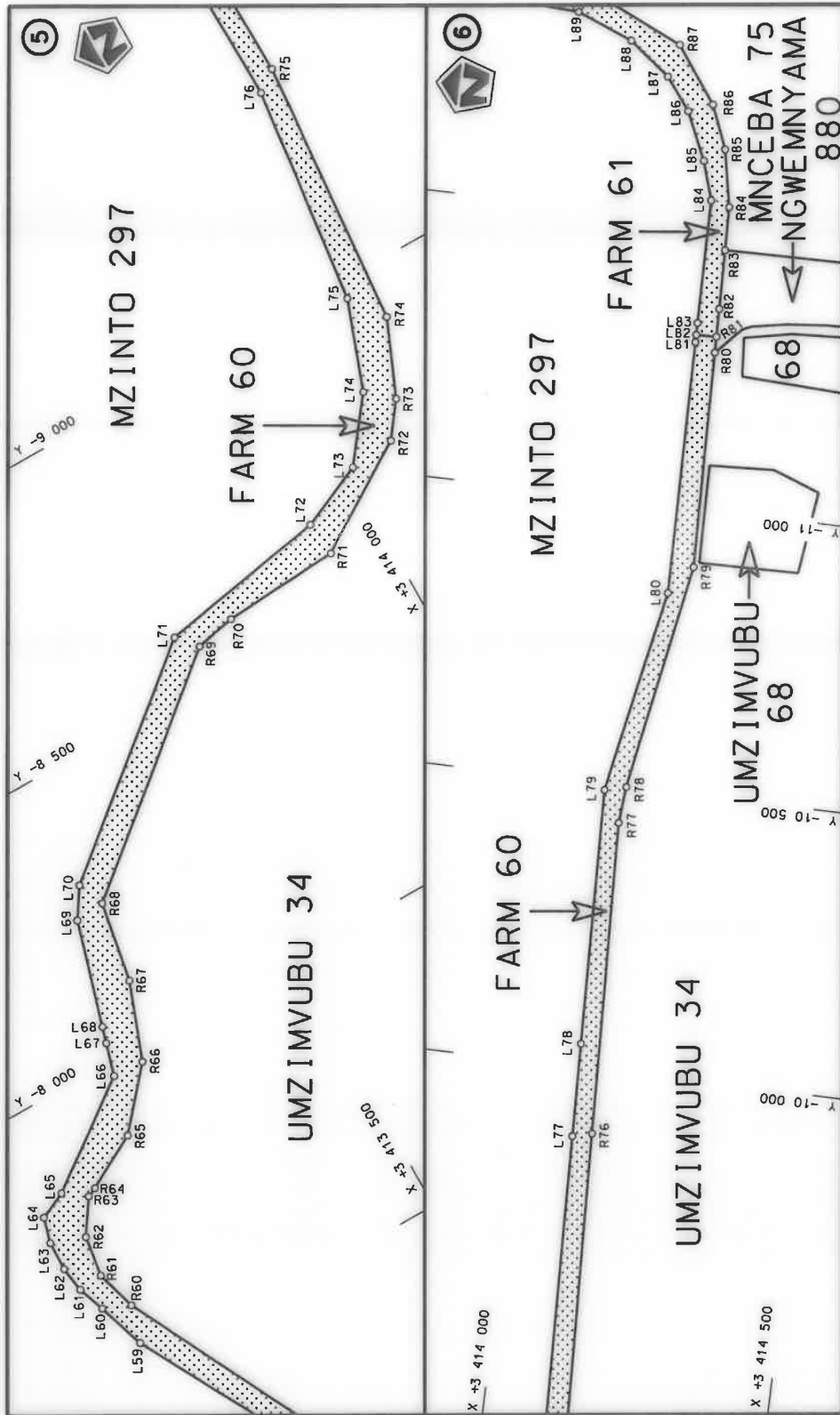
Die Suid Afrikaanse Nasionale Padagentskap MSB Bpk The South African National Roads Agency SOC Ltd	Die figuur getoon The figure shown	steldie padreserwe voor van 'n gedeelte represents the road reserve of a portion van Nasionale Roete N2 of National Route Section	20X	Plan P1011/17
		Vel Sheet 1 of 22		



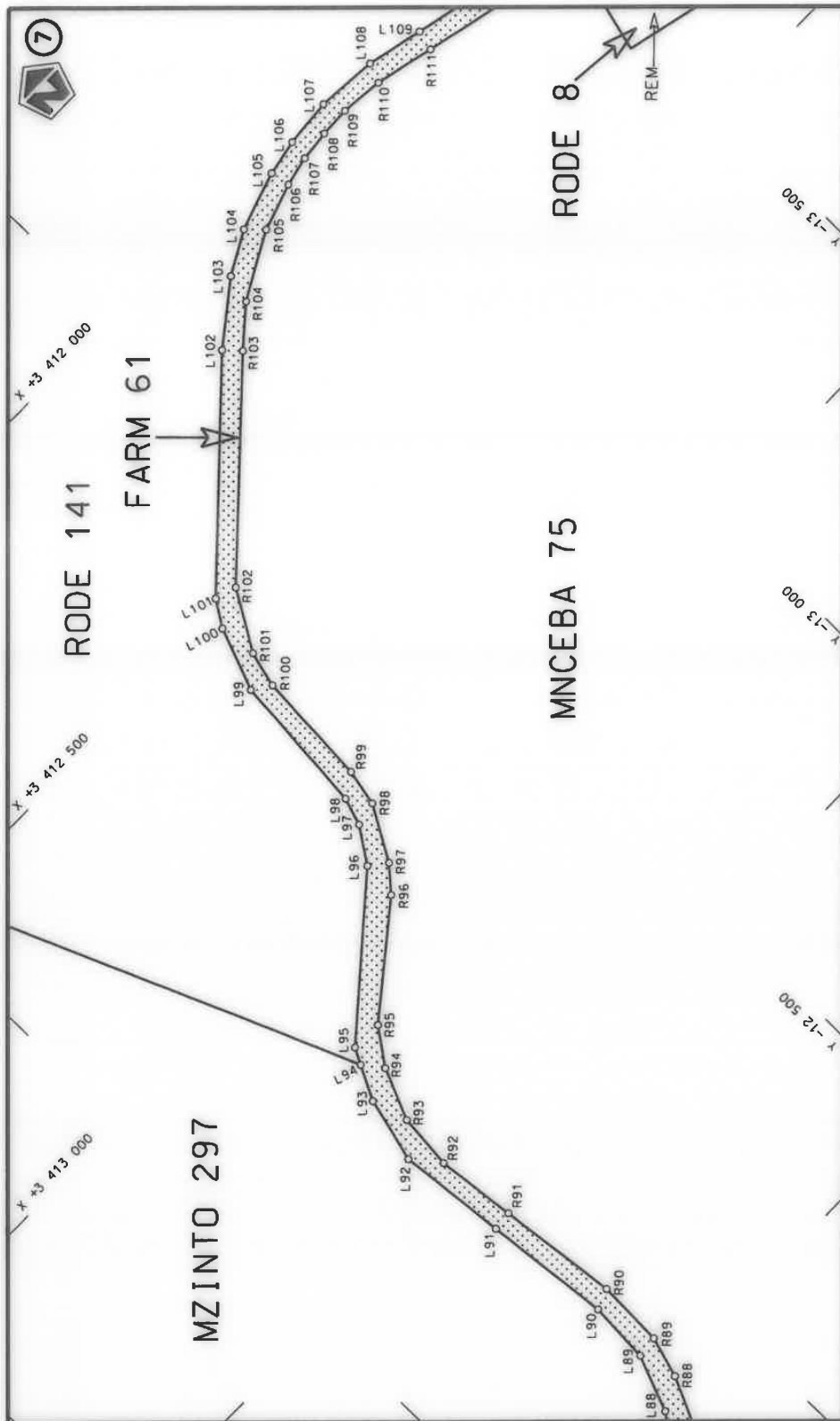
Die Suid Afrikaanse Nasionale Padagentskap MSB Bpk The South African National Roads Agency SOC Ltd	Die figuur getoon The figure shown	 steldie padreserwe voor van 'n gedeelte represents the road reserve of a portion van Nasionale Roete N2 of National Route N2 Section	Vel Sheet 2 of 22 Plan P1011/17
---	---------------------------------------	---	---------------------------------------



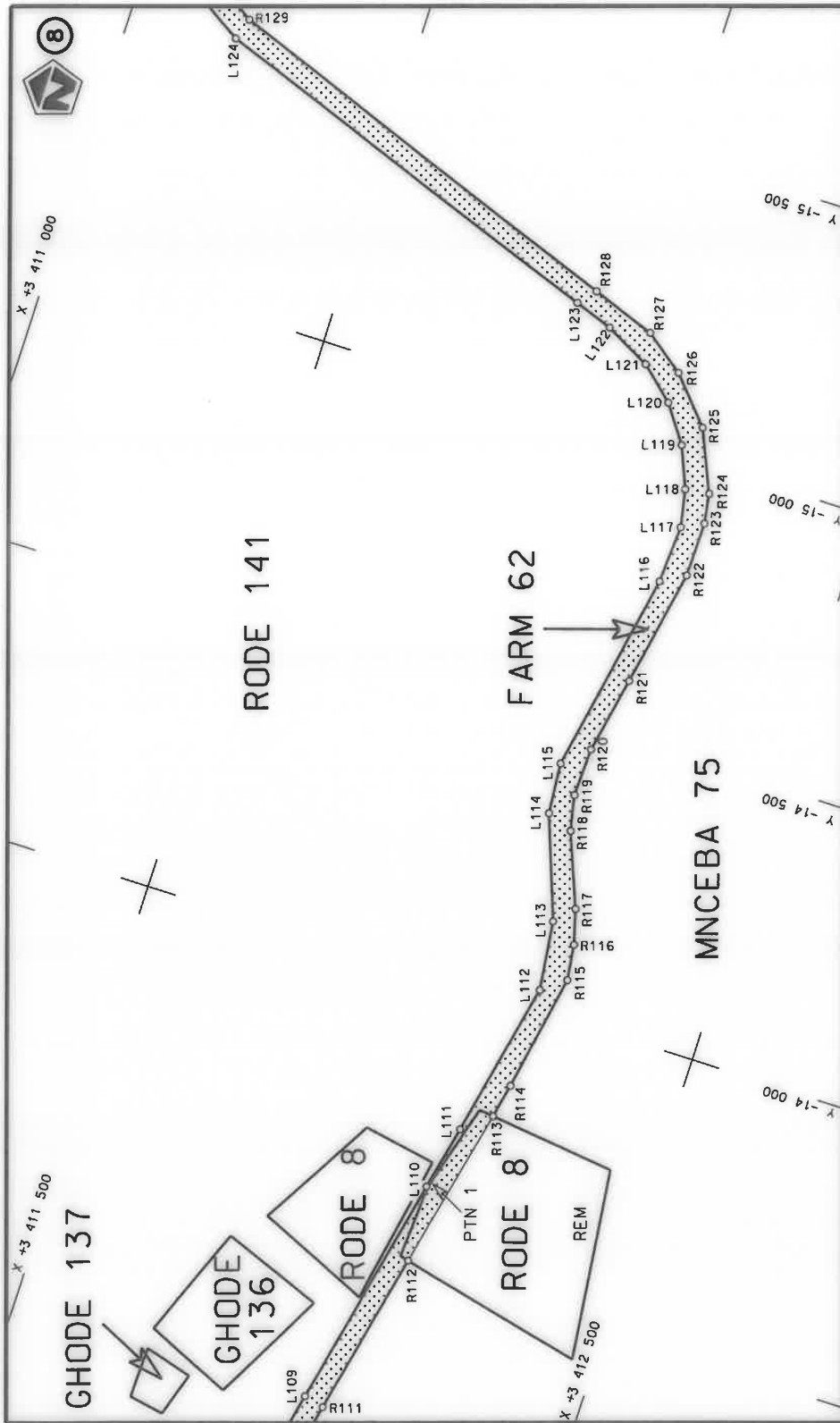
Die Suid-Afrikaanse Nasionale Padagentskap MSB Bpk The South African National Roads Agency SOC Ltd	Die figuur getoon The figure shown		stel die padreserve voor van 'n gedeelte represents the road reserve of a portion van Nasionale Roete N2 of National Route	Seksie Section	20X	Plan P1011/17
				Vel Sheet	van of	22



<p>Die Suid-Afrikaanse Nasionale Padagentskap MSB Bpk The South African National Roads Agency SOC Ltd</p>	<p>Die figuur getoon The figure shown</p>	<p>stei die podreserwe voor van 'n gedeelte represents the road reserve of a portion van Nasionale Roete N2 Seksie 20X Section</p>	<p>Vel Sheet 4 of 22 Plan P1011/17</p>
---	---	--	--

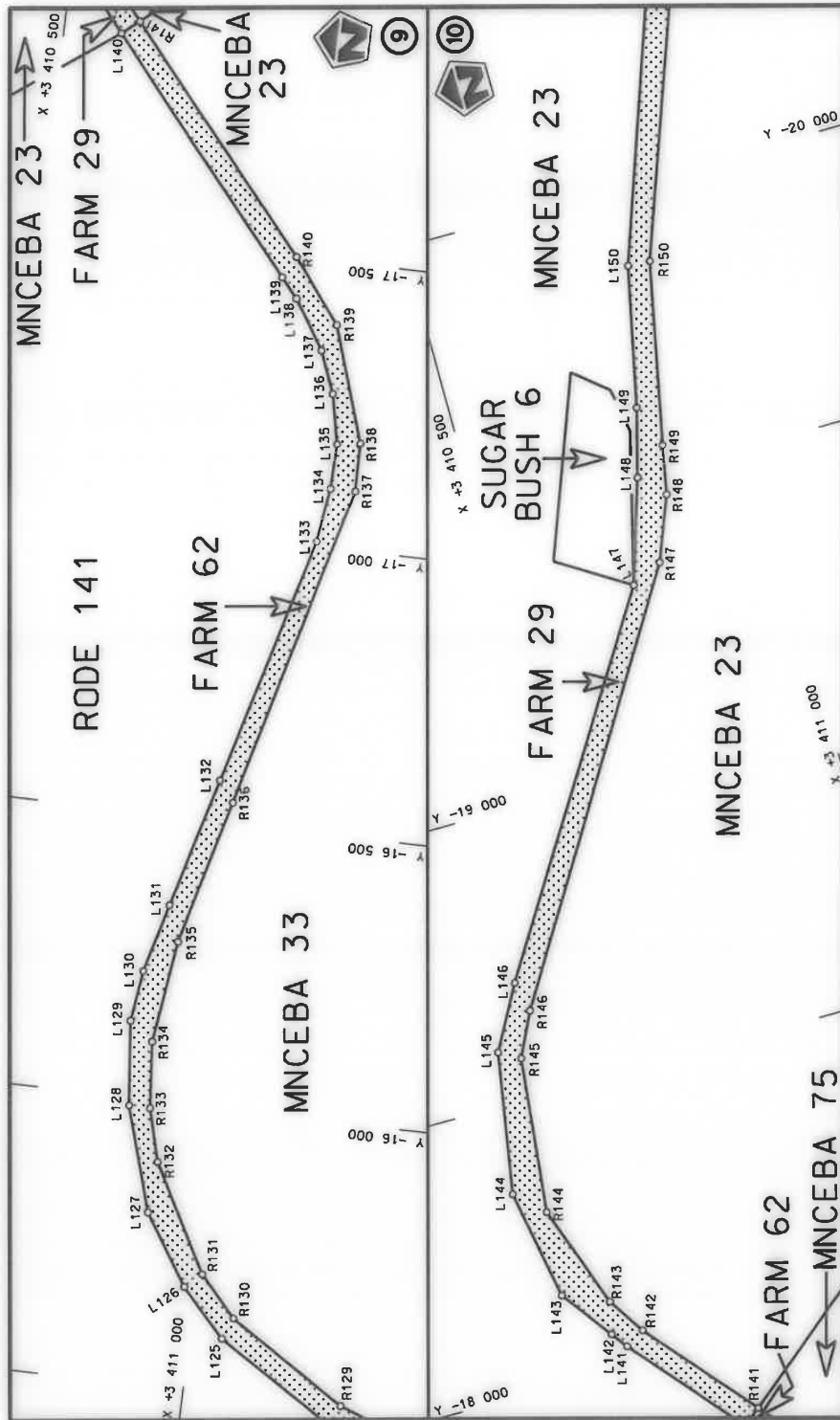


Die Suid-Afrikaanse Nasionale Padagentskap MSB Bpk The South African National Roads Agency SOC Ltd	Die figuur getoon The figure shown		steil die padreserwe voor van 'n gedeelte represents the road reserve of a portion van Nasionale Roete N2 of National Route N2 Sektie Section	Vel Sheet 5 van 22 of Plan P1011/17
---	---------------------------------------	---	--	--

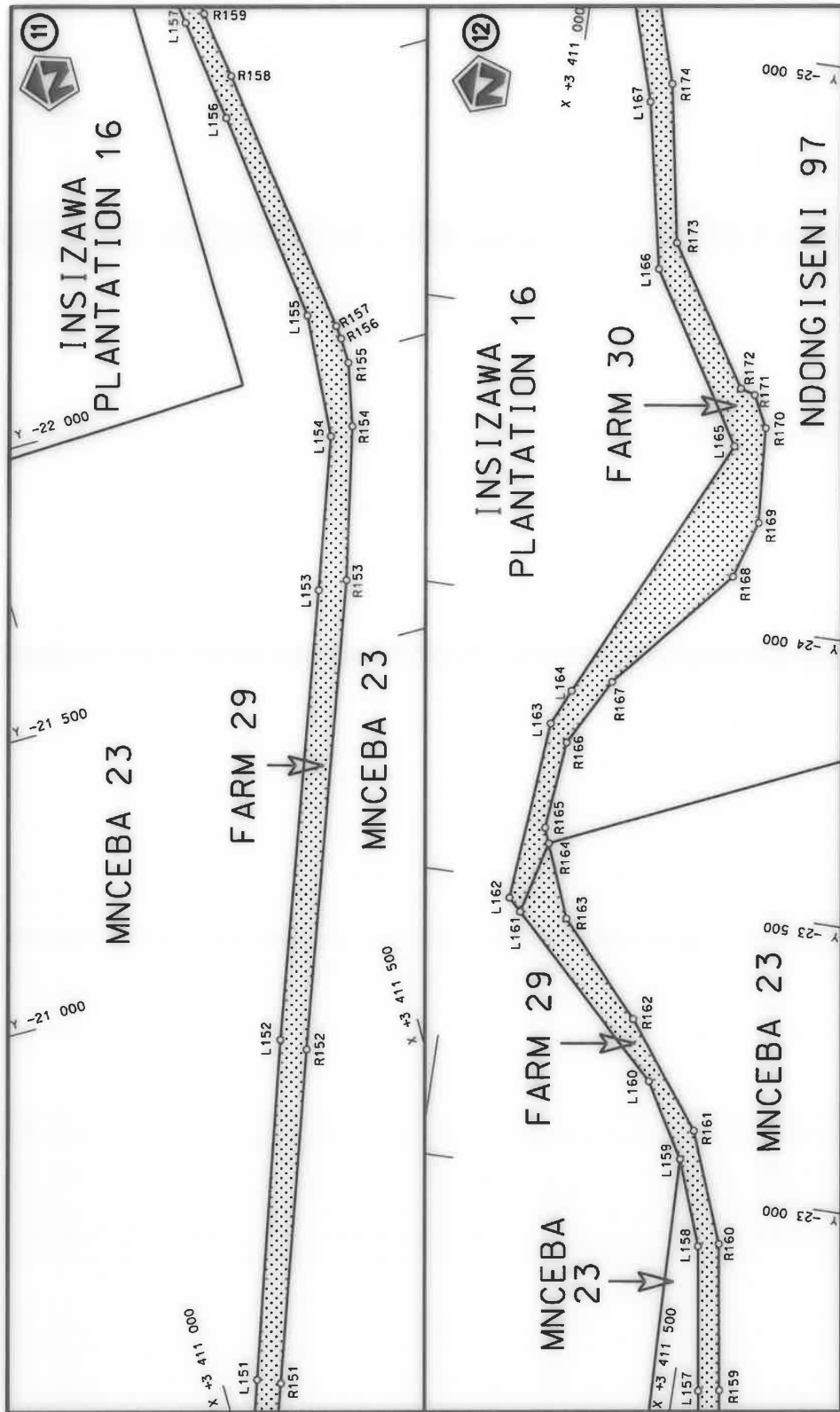


<p>Die Suid-Afrikaanse Nasionale Padagentskap MSB Bpk The South African National Roads Agency SOC Ltd</p>	<p>Die figuur getoon The figure shown</p>	<p>steedse padreserwe voor 'n gedeelte represents the road reserve of a portion van Nasionale Roete N2 of National Route N2</p> <p>Seksie Section</p> <p>20X</p>	<p>Vel Sheet</p> <p>6 of</p> <p>van of</p> <p>22</p> <p>Plan P1011/17</p>
---	---	--	---

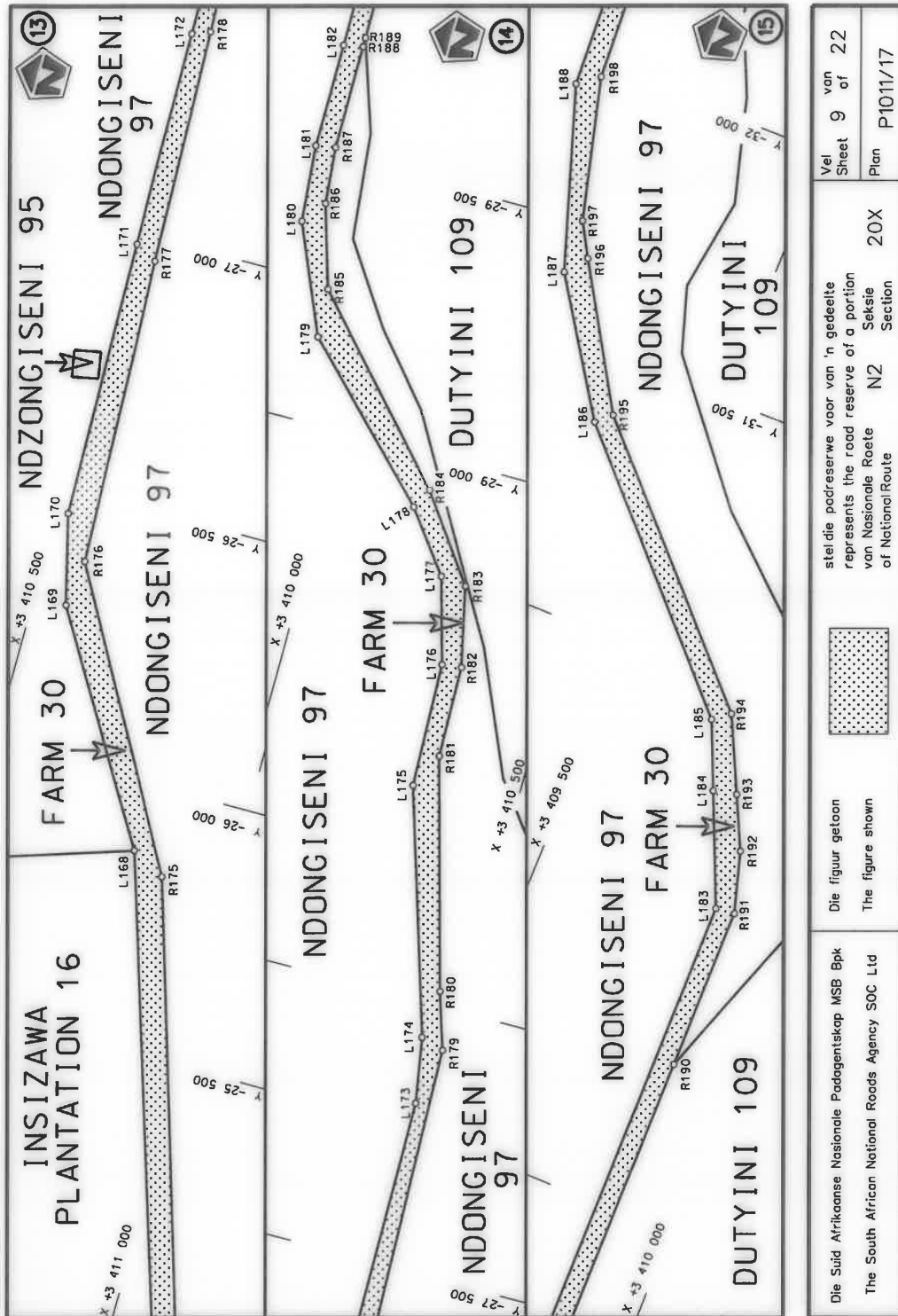




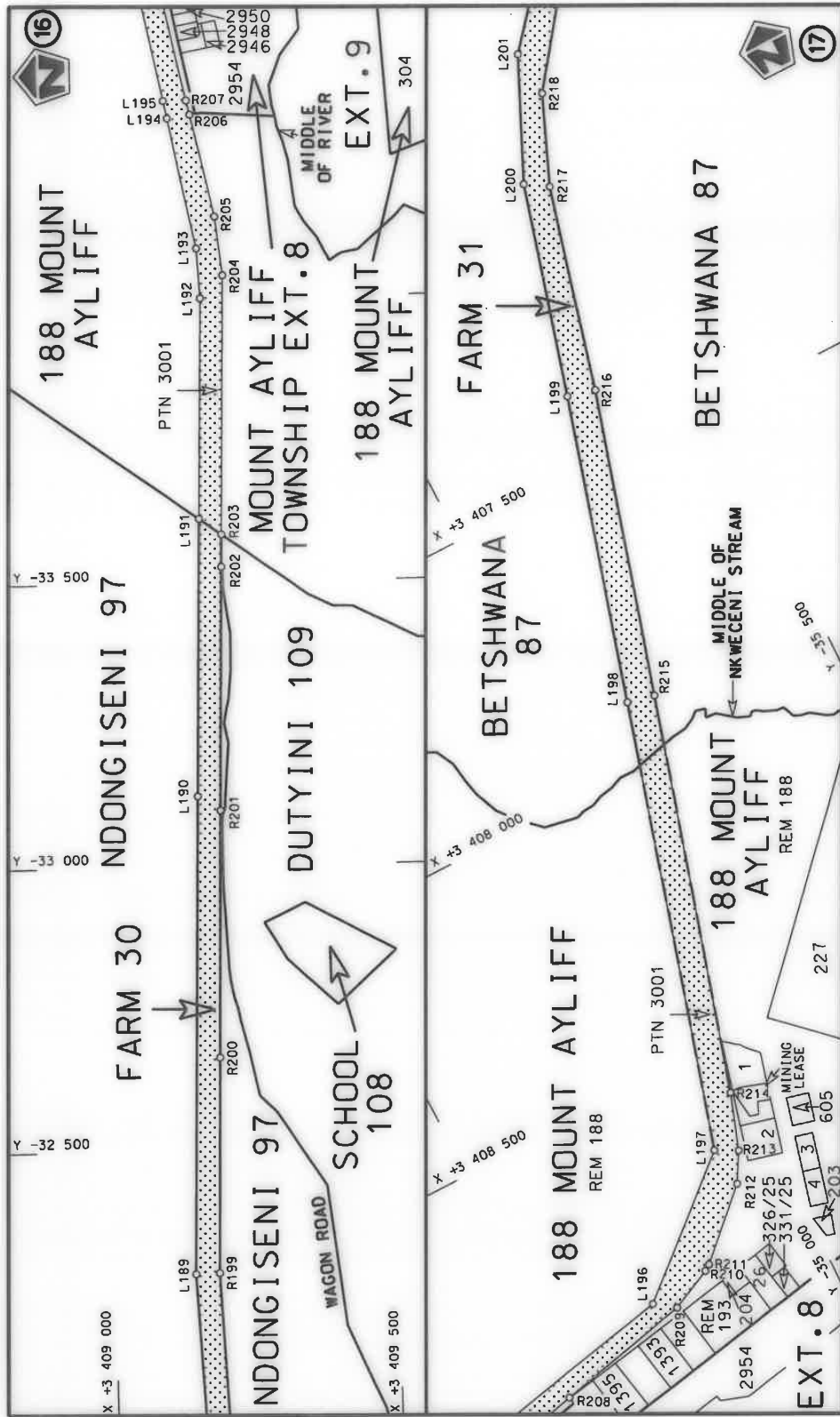
Die Suid Afrikaanse Nasionale Padagentskap MSB Bpk The South African National Roads Agency SOC Ltd	Die figuur getoon The figure shown		stelsel padreserwe voor van 'n gedeelte represents the road reserve of a portion van Nasionale Roete N2 of National Route Section	Vel Sheet 7 of 22
				Plan P1011/17



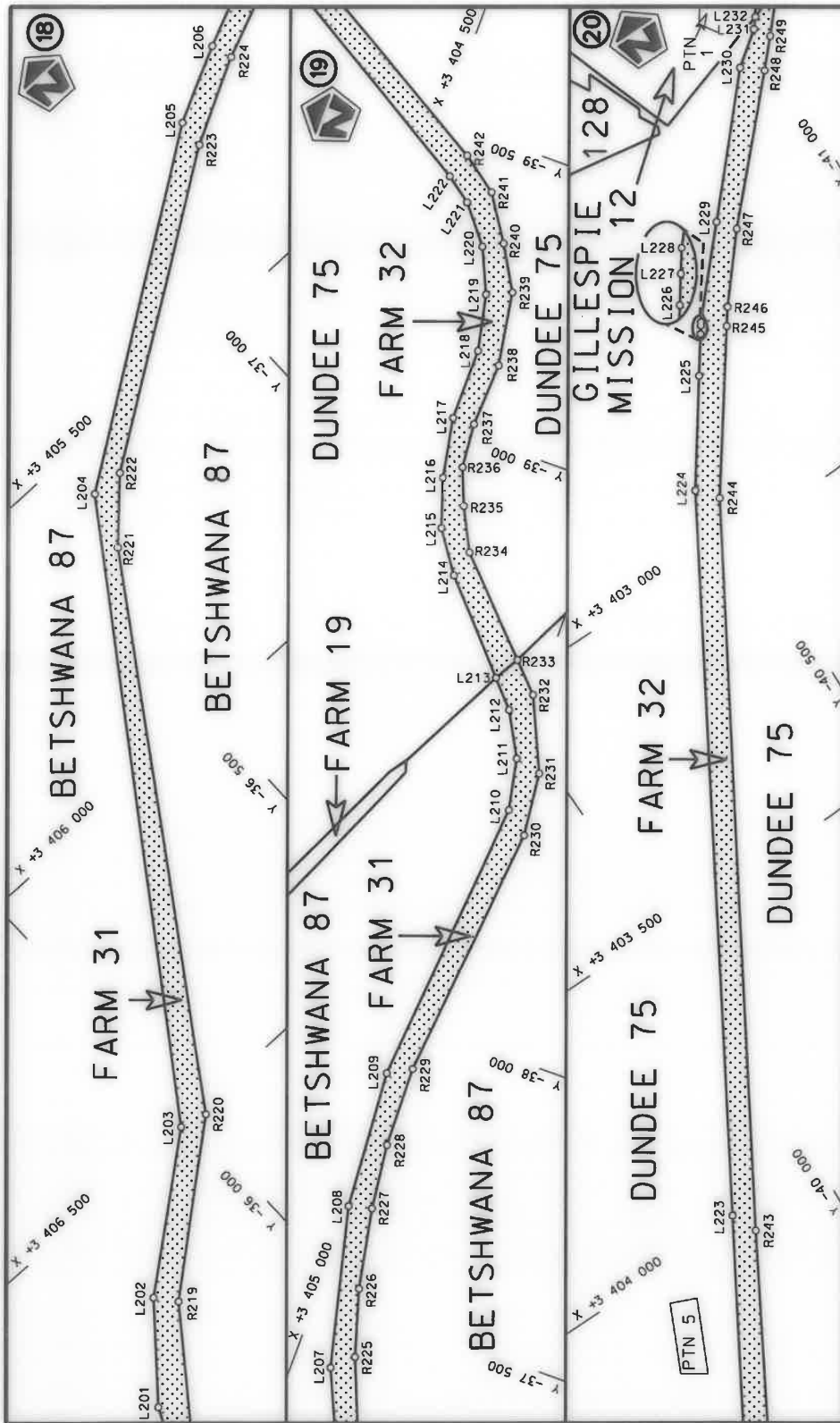
Die Suid-Afrikaanse Nasionale Padagentskap MSB Bpk The South African National Roads Agency SOC Ltd	Die figuur getoon The figure shown		stede die padreserwe voor van 'n gedeelte represents the road reserve of a portion van Nasionale Roete N2 of National Route	Vel Sheet 8	van of 22
				Plan P1011/17	Section 20X

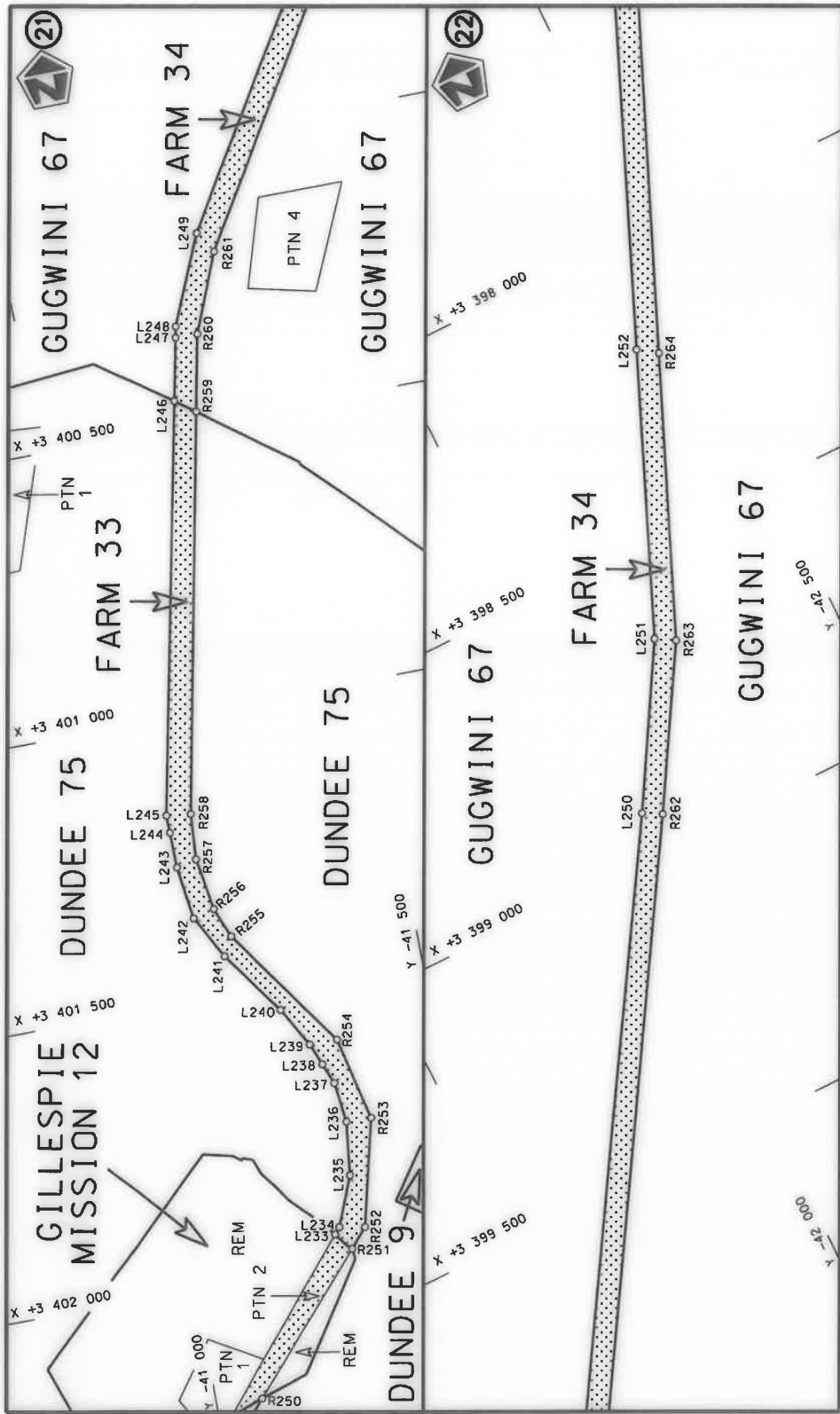


Die Suid-Afrikaanse Nasionale Padagentskap MSB Bpk The South African National Roads Agency SOC Ltd	Die figuur getoon The figure shown	 stelsel padreserwe voor van 'n gedeelte represents the road reserve of a portion van Nasionale Roete N2 of National Route N2	Vel Sheet 9 van 22 Plan P1011/17
---	---------------------------------------	--	-------------------------------------

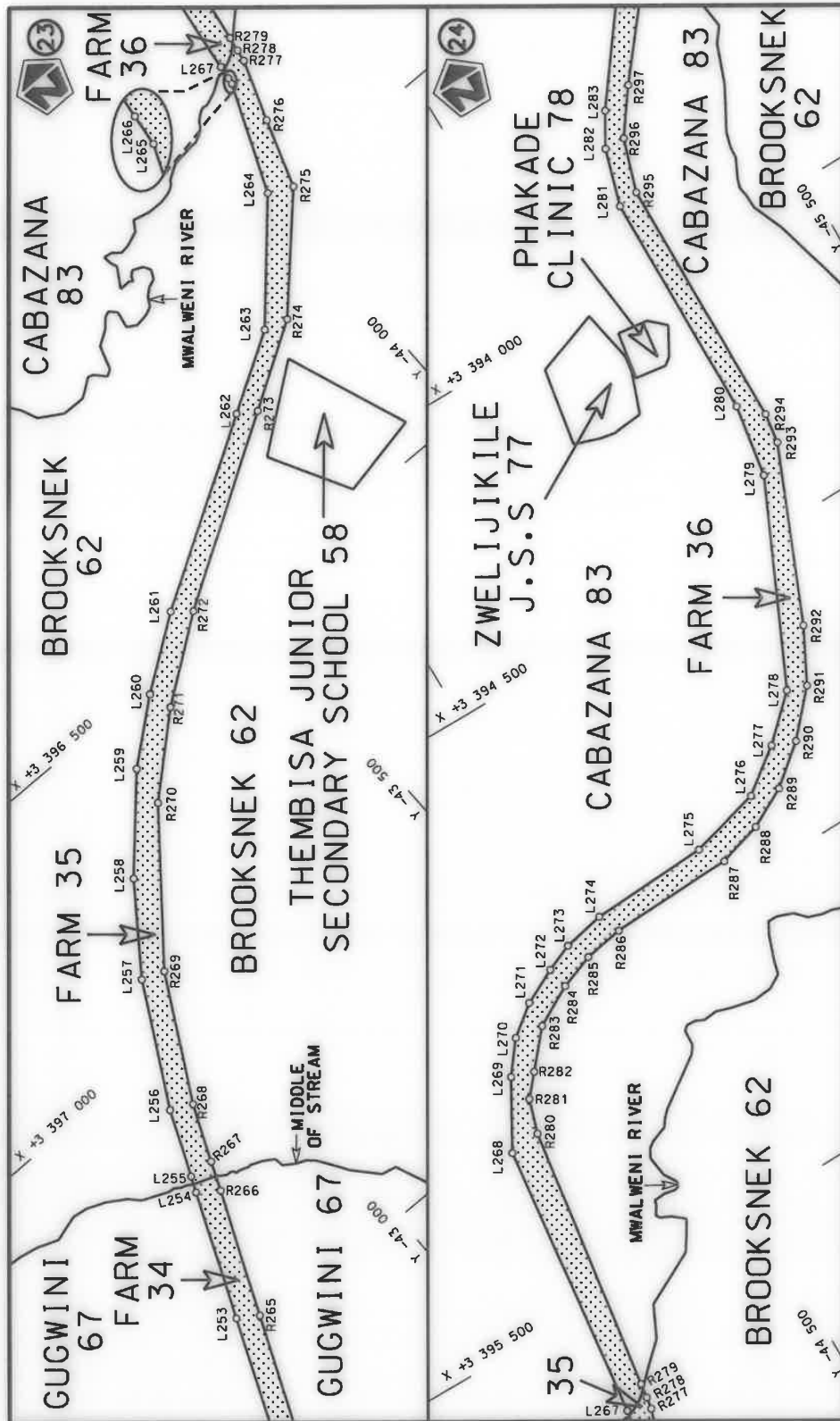


<p>Die Suid Afrikaanse Nasionale Padagentenskap MSB Bpk The South African National Roads Agency SOC Ltd</p>	<p>Die figuur getoon The figure shown</p>		<p>stetidie padreserwe voor van 'n gedeelte represents the road reserve of a portion van Nasionale Roete of National Route</p> <p>NZ Seksie Section</p> <p>20X</p>	<p>Vel Sheet 10 of 22</p> <p>Plan P1011/17</p>
---	---	---	--	--

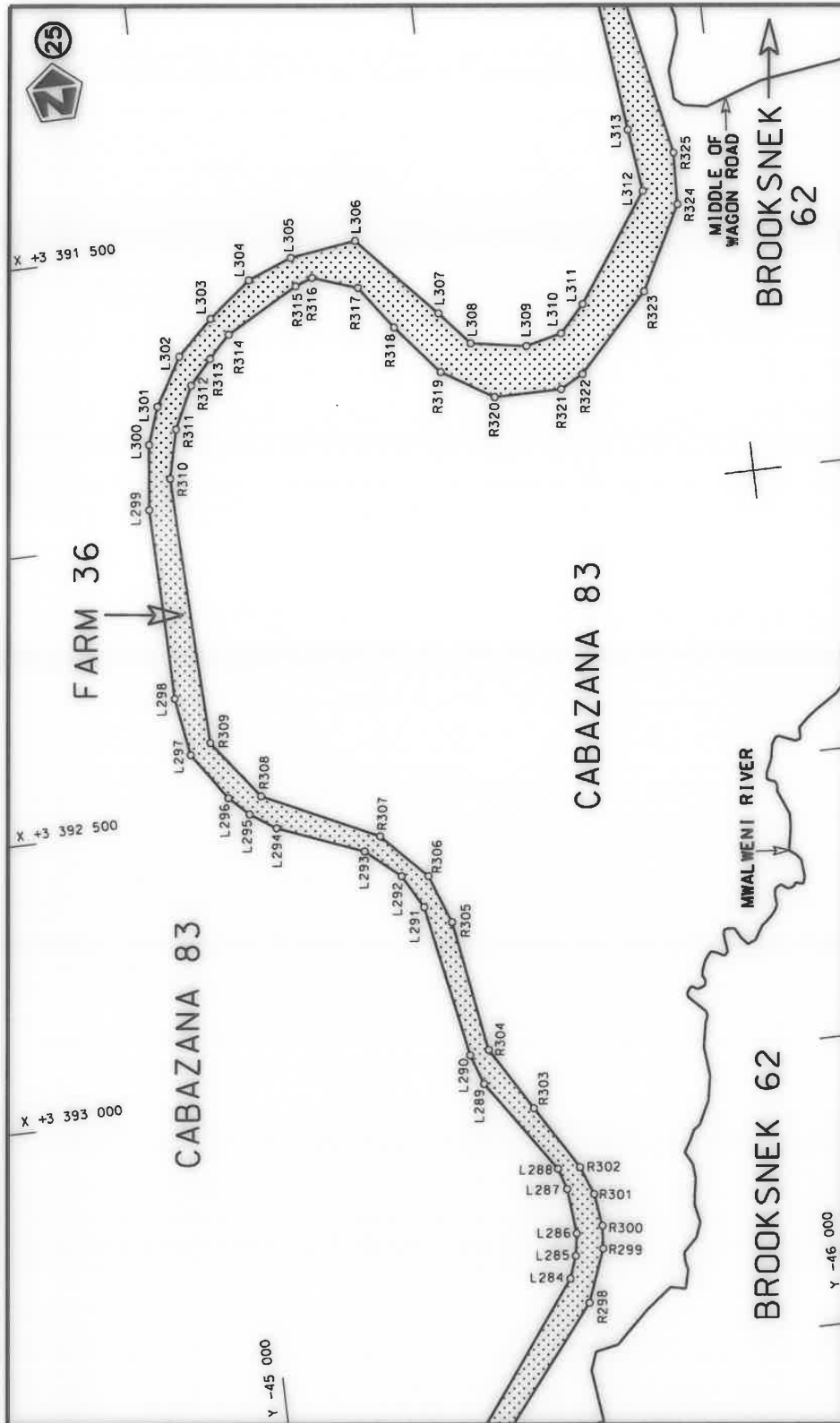




Die Suid Afrikaanse Nasionale Padagentskap MSB Bpk The South African National Roads Agency SOC Ltd	Die figuur getoon The figure shown	stel die padreserwe voor van 'n gedeelte represents the road reserve of a portion van Nasionale Roete N2 of National Route Section	20X	Vel van Sheet 12 of 22
				Plan P1011/17

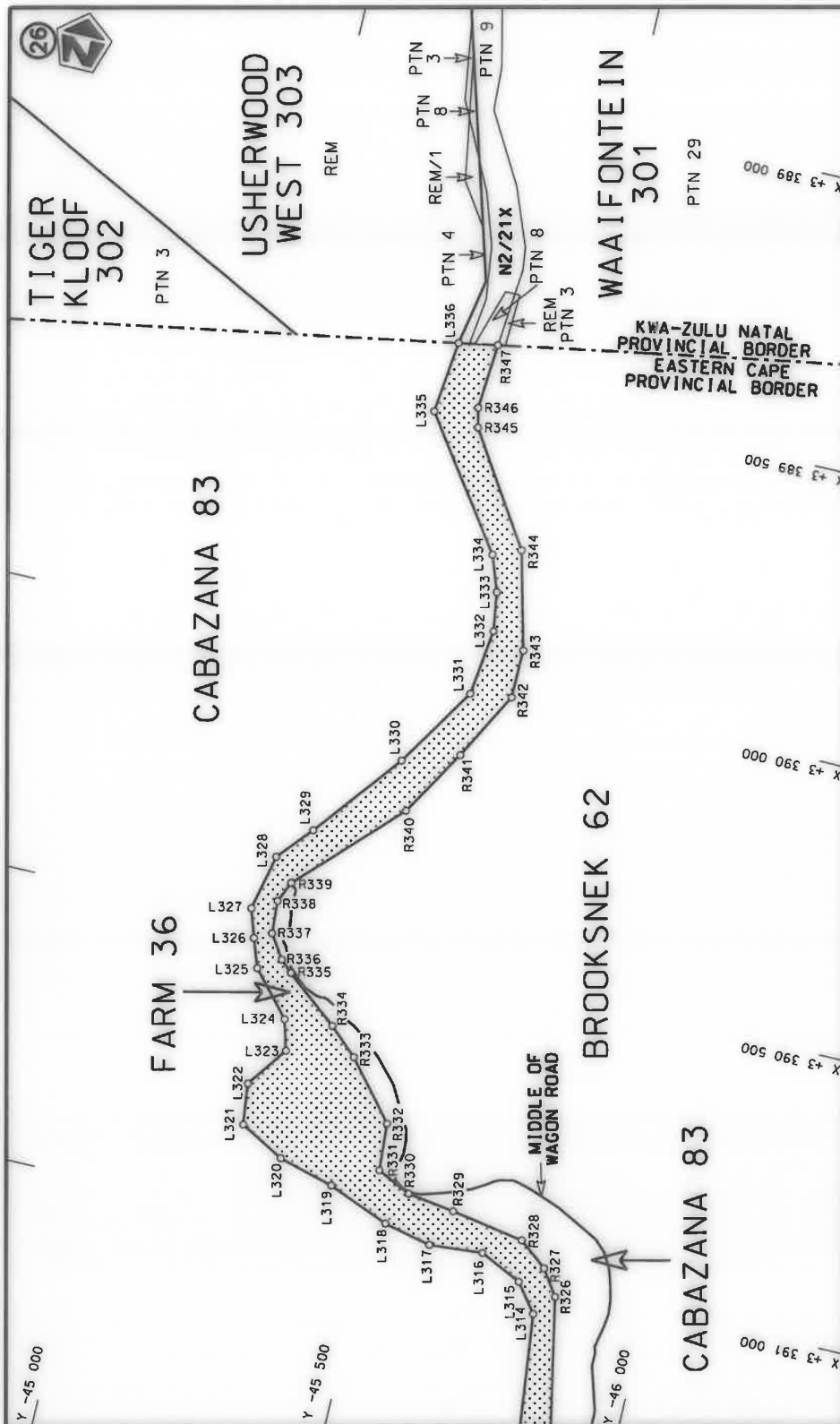


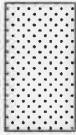
<p>Die Suid Afrikaanse Nasionale Padagentskap MSB Bpk The South African National Roads Agency SOC Ltd</p>	<p>Die figuur getoon The figure shown</p>	<p>steeldie padreserwe voor van 'n gedeelte represents the road reserve of a portion van Nasionale Roete N2 of National Route N2</p>	<p>Seksie Section</p>	<p>20X</p>	<p>Plan P1011/17</p>	<p>Vel Sheet 13 of 22</p>
---	---	--	---------------------------	------------	----------------------	-------------------------------



Die Suid-Afrikaanse Nasionale Padagentskap MSB Bpk The South African National Roads Agency SOC Ltd	Die figuur getoon The figure shown	steeldie padreserwe voor van 'n gedeelte represents the road reserve of a portion van Nasionale Roete N2 of National Route	Vel Sheet 14 of 22
			Plan P1011/17





Die Suid-Afrikaanse Nasionale Padagentskap MSB Bpk The South African National Roads Agency SOC Ltd	Die figuur getoon The figure shown		steeldie padreserwe voor 'n gedeelte represents the road reserve of a portion van Nasionale Roete N2 of National Route	
			20X	Seksie Section
			Vel Sheet	van of
			15	22
			Plan	P1011/17

PADRESERWE KOÖRDINATE / ROAD RESERVE CO-ORDINATES					
LINKERKANT/LEFT HAND SIDE			REGTERKANT/RIGHT HAND SIDE		
	Y	X	WG 29°	Y	X
L1	340.70	3 418	612.18	R1	306.02 3 418 627.11
L2	332.31	3 418	569.59	R2	299.51 3 418 598.42
L3	311.68	3 418	526.78	R3	284.07 3 418 555.17
L4	305.12	3 418	513.18	R4	277.52 3 418 536.80
L5	61.48	3 418	155.85	R5	47.12 3 418 198.03
L6	-186.45	3 417	795.98	R6	-180.08 3 417 880.88
L7	-207.03	3 417	768.50	R7	-218.12 3 417 818.72
L8	-249.73	3 417	718.23	R8	-275.06 3 417 741.81
L9	-320.54	3 417	649.16	R9	-342.64 3 417 680.92
L10	-685.59	3 417	431.81	R10	-467.73 3 417 601.04
L11	-723.42	3 417	379.49	R11	-548.75 3 417 552.91
L12	-790.63	3 417	284.72	R12	-781.21 3 417 421.57
L13	-796.02	3 417	123.03	R13	-808.00 3 417 354.94
L14	-728.22	3 416	902.31	R14	-817.46 3 417 331.61
L15	-719.55	3 416	762.43	R15	-879.13 3 417 158.38
L16	-788.49	3 416	636.25	R16	-792.66 3 416 990.62
L17	-812.97	3 416	591.17	R17	-778.11 3 416 874.94
L18	-814.70	3 416	589.30	R18	-783.75 3 416 779.20
L19	-978.10	3 416	413.48	R19	-839.44 3 416 629.14
L20	-1 317.06	3 416	047.52	R20	-860.17 3 416 606.26
L21	-1 728.01	3 415	603.09	R21	-917.89 3 416 541.42
L22	-1 922.76	3 415	460.36	R22	-1 344.43 3 416 085.92
L23	-2 096.88	3 415	403.21	R23	-1 726.52 3 415 674.62
L24	-2 438.28	3 415	329.15	R24	-1 753.58 3 415 642.18
L25	-2 543.08	3 415	269.82	R25	-1 873.09 3 415 552.62
L26	-2 610.42	3 415	188.72	R26	-1 938.34 3 415 516.84
L27	-2 666.01	3 415	093.63	R27	-2 053.88 3 415 463.64
L28	-2 847.19	3 414	783.65	R28	-2 104.22 3 415 446.60
L29	-2 943.09	3 414	691.79	R29	-2 164.18 3 415 432.93
L30	-3 027.33	3 414	636.89	R30	-2 484.47 3 415 369.76
L31	-3 157.74	3 414	618.58	R31	-2 633.84 3 415 237.07
L32	-3 242.11	3 414	612.23	R32	-2 693.23 3 415 129.21
L33	-3 548.33	3 414	677.75	R33	-2 809.61 3 414 917.87
L34	-3 635.33	3 414	671.59	R34	-3 000.92 3 414 715.49
L35	-3 677.42	3 414	658.29	R35	-3 283.23 3 414 661.35
L36	-4 170.81	3 414	275.19	R36	-3 478.92 3 414 709.21
L37	-4 337.06	3 414	150.05	R37	-3 601.29 3 414 744.69
L38	-4 489.62	3 414	098.15	R38	-3 675.67 3 414 716.52
L39	-4 591.38	3 414	096.29	R39	-4 204.05 3 414 311.78
L40	-4 915.30	3 414	194.93	R40	-4 373.03 3 414 179.34
L41	-5 128.02	3 414	259.71	R41	-4 567.02 3 414 143.49
L42	-5 767.57	3 414	454.25	R42	-4 915.78 3 414 248.07
L43	-6 007.35	3 414	496.30	R43	-5 293.07 3 414 361.21
L44	-6 108.25	3 414	498.62	R44	-5 750.58 3 414 498.40
L45	-6 312.41	3 414	456.49	R45	-5 986.83 3 414 545.30
L46	-6 484.20	3 414	414.39	R46	-6 347.07 3 414 514.02
L47	-6 535.60	3 414	391.86	R47	-6 549.36 3 414 445.86
L48	-6 552.94	3 414	383.35	R48	-6 551.91 3 414 424.77
L49	-6 710.78	3 414	305.96	R49	-6 566.83 3 414 417.72
L50	-6 798.28	3 414	263.05	R50	-6 731.46 3 414 339.84
L51	-6 873.04	3 414	182.65	R51	-6 800.41 3 414 307.23

Vel Sheet 16 Van of 22

P1011/17

PADRESERWE KOÖRDINATE / ROAD RESERVE CO-ORDINATES						
LINKERKANT/LEFT HAND SIDE				REGTERKANT/RIGHT HAND SIDE		
	Y	X	WG 29°		Y	X
L52	-6 935.71	3 413 939.50		R52	-6 842.77	3 414 327.14
L53	-6 958.15	3 413 868.99		R53	-6 873.69	3 414 242.25
L54	-7 026.30	3 413 748.53		R54	-6 920.27	3 414 187.00
L55	-7 125.00	3 413 577.73		R55	-6 998.19	3 413 895.28
L56	-7 137.59	3 413 277.61		R56	-7 065.08	3 413 766.26
L57	-7 140.99	3 413 204.11		R57	-7 176.74	3 413 544.34
L58	-7 217.50	3 413 109.99		R58	-7 180.50	3 413 236.52
L59	-7 541.92	3 412 931.37		R59	-7 253.07	3 413 133.10
L60	-7 626.90	3 412 903.59		R60	-7 607.30	3 412 950.69
L61	-7 675.08	3 412 886.11		R61	-7 679.06	3 412 929.60
L62	-7 720.74	3 412 879.33		R62	-7 751.62	3 412 939.63
L63	-7 773.06	3 412 879.79		R63	-7 811.58	3 412 978.97
L64	-7 817.72	3 412 892.00		R64	-7 819.00	3 412 995.63
L65	-7 839.65	3 412 940.18		R65	-7 871.72	3 413 090.86
L66	-7 974.67	3 413 121.04		R66	-7 972.57	3 413 176.32
L67	-8 031.74	3 413 137.30		R67	-8 108.37	3 413 226.18
L68	-8 060.34	3 413 145.46		R68	-8 250.36	3 413 250.97
L69	-8 245.63	3 413 198.26		R69	-8 561.36	3 413 620.21
L70	-8 297.80	3 413 231.37		R70	-8 576.18	3 413 691.96
L71	-8 596.95	3 413 589.28		R71	-8 591.02	3 413 901.80
L72	-8 652.61	3 413 895.14		R72	-8 712.62	3 414 090.13
L73	-8 704.14	3 414 009.31		R73	-8 772.60	3 414 134.00
L74	-8 811.06	3 414 089.60		R74	-8 906.32	3 414 189.50
L75	-8 968.33	3 414 145.03		R75	-9 385.54	3 414 224.81
L76	-9 358.47	3 414 187.55		R76	-9 896.29	3 414 206.72
L77	-9 887.71	3 414 172.35		R77	-10 444.73	3 414 187.29
L78	-10 050.80	3 414 167.66		R78	-10 508.91	3 414 192.86
L79	-10 499.17	3 414 154.74		R79	-10 906.67	3 414 262.74
L80	-10 856.24	3 414 223.42		R80	-11 285.61	3 414 253.02
L81	-11 299.54	3 414 217.27		R81	-11 313.28	3 414 252.32
L82	-11 312.64	3 414 217.09		R82	-11 362.64	3 414 251.05
L83	-11 333.48	3 414 216.80		R83	-11 466.26	3 414 248.39
L84	-11 550.00	3 414 213.79		R84	-11 542.22	3 414 246.45
L85	-11 617.43	3 414 192.53		R85	-11 641.65	3 414 226.55
L86	-11 700.65	3 414 154.49		R86	-11 717.47	3 414 195.80
L87	-11 756.63	3 414 111.26		R87	-11 814.68	3 414 125.30
L88	-11 811.85	3 414 039.72		R88	-11 867.73	3 414 008.63
L89	-11 850.68	3 413 939.89		R89	-11 889.35	3 413 935.56
L90	-11 856.45	3 413 829.64		R90	-11 892.43	3 413 815.22
L91	-11 833.30	3 413 603.32		R91	-11 867.75	3 413 599.59
L92	-11 813.39	3 413 408.61		R92	-11 851.42	3 413 456.93
L93	-11 842.44	3 413 292.71		R93	-11 860.49	3 413 358.27
L94	-11 872.98	3 413 232.76		R94	-11 898.41	3 413 267.21
L95	-11 887.59	3 413 204.08		R95	-11 943.53	3 413 205.08
L96	-12 129.81	3 412 996.34		R96	-12 122.05	3 413 061.50
L97	-12 170.89	3 412 934.98		R97	-12 159.57	3 413 019.04
L98	-12 186.44	3 412 885.86		R98	-12 213.67	3 412 925.18
L99	-12 204.04	3 412 631.64		R99	-12 226.81	3 412 859.94
L100	-12 245.80	3 412 520.50		R100	-12 236.31	3 412 653.02
L101	-12 275.12	3 412 475.39		R101	-12 252.64	3 412 589.22
L102	-12 592.25	3 412 177.36		R102	-12 313.11	3 412 486.31

Vel 17 Van 22  
Sheet of

P1011/17

PADRESERWE KOÖRDINATE / ROAD RESERVE CO-ORDINATES					
LINKERKANT/LEFT HAND SIDE			REGTERKANT/RIGHT HAND SIDE		
	Y	X	WG 29°	Y	X
L103	-12 694.99	3 412 097.08		R103	-12 616.61 3 412 204.09
L104	-12 769.46	3 412 055.82		R104	-12 682.25 3 412 147.39
L105	-12 873.35	3 412 021.79		R105	-12 796.66 3 412 084.38
L106	-12 937.92	3 412 009.81		R106	-12 880.22 3 412 056.97
L107	-13 023.81	3 412 002.51		R107	-12 933.81 3 412 045.75
L108	-13 132.64	3 412 011.99		R108	-12 988.45 3 412 039.83
L109	-13 232.80	3 412 034.40		R109	-13 042.70 3 412 038.35
L110	-13 647.97	3 412 127.27		R110	-13 118.78 3 412 045.92
L111	-13 760.94	3 412 152.54		R111	-13 223.73 3 412 069.71
L112	-14 035.47	3 412 209.98		R112	-13 514.34 3 412 135.58
L113	-14 156.58	3 412 194.91		R113	-13 800.48 3 412 200.42
L114	-14 334.85	3 412 130.06		R114	-13 860.29 3 412 212.95
L115	-14 423.91	3 412 122.83		R115	-14 066.10 3 412 249.99
L116	-14 779.48	3 412 188.91		R116	-14 128.73 3 412 241.99
L117	-14 880.65	3 412 195.40		R117	-14 189.48 3 412 225.33
L118	-14 946.23	3 412 182.43		R118	-14 316.88 3 412 175.45
L119	-15 017.83	3 412 152.82		R119	-14 378.45 3 412 162.55
L120	-15 081.48	3 412 107.81		R120	-14 463.22 3 412 165.22
L121	-15 133.59	3 412 049.06		R121	-14 597.46 3 412 192.34
L122	-15 175.49	3 411 969.77		R122	-14 803.53 3 412 231.25
L123	-15 199.66	3 411 902.95		R123	-14 899.32 3 412 232.45
L124	-15 457.54	3 411 189.81		R124	-14 951.54 3 412 224.59
L125	-15 589.10	3 410 982.21		R125	-15 058.09 3 412 178.01
L126	-15 672.09	3 410 906.34		R126	-15 136.75 3 412 108.75
L127	-15 794.68	3 410 827.20		R127	-15 187.99 3 412 039.87
L128	-15 977.09	3 410 770.56		R128	-15 228.99 3 411 928.44
L129	-16 125.47	3 410 755.13		R129	-15 496.13 3 411 202.27
L130	-16 214.56	3 410 767.40		R130	-15 626.89 3 410 998.00
L131	-16 334.78	3 410 799.55		R131	-15 697.83 3 410 934.93
L132	-16 562.52	3 410 860.42		R132	-15 884.96 3 410 833.32
L133	-16 999.28	3 410 977.17		R133	-15 977.03 3 410 808.77
L134	-17 093.52	3 410 989.96		R134	-16 093.39 3 410 798.36
L135	-17 172.18	3 410 991.74		R135	-16 272.86 3 410 822.12
L136	-17 259.09	3 410 973.58		R136	-16 526.45 3 410 887.28
L137	-17 332.44	3 410 944.86		R137	-17 093.92 3 411 033.10
L138	-17 417.44	3 410 889.76		R138	-17 178.48 3 411 031.79
L139	-17 451.56	3 410 860.63		R139	-17 380.09 3 410 965.77
L140	-17 842.86	3 410 527.32		R140	-17 489.94 3 410 881.00
L141	-18 033.31	3 410 365.10		R141	-17 867.52 3 410 557.62
L142	-18 061.29	3 410 344.58		R142	-18 053.30 3 410 398.49
L143	-18 150.28	3 410 279.33		R143	-18 117.34 3 410 357.16
L144	-18 344.85	3 410 244.05		R144	-18 298.19 3 410 293.00
L145	-18 591.79	3 410 285.22		R145	-18 570.87 3 410 322.19
L146	-18 702.06	3 410 346.32		R146	-18 647.48 3 410 358.99
L147	-19 319.59	3 410 731.49		R147	-19 345.79 3 410 785.54
L148	-19 499.79	3 410 787.61		R148	-19 457.40 3 410 828.77
L149	-19 618.27	3 410 818.79		R149	-19 542.34 3 410 845.10
L150	-19 862.37	3 410 870.18		R150	-19 860.30 3 410 908.92
L151	-20 308.00	3 411 024.69		R151	-20 291.00 3 411 062.79
L152	-20 876.73	3 411 221.89		R152	-20 848.15 3 411 261.82
L153	-21 624.39	3 411 495.33		R153	-21 628.45 3 411 546.82

Vel Sheet 18 Van of 22

P1011/17

PADRESERWE KOÖRDINATE / ROAD RESERVE CO-ORDINATES					
LINKERKANT/LEFT HAND SIDE			REGTERKANT/RIGHT HAND SIDE		
	Y	X	WG 29°	Y	X
L154	-21 880.26	3 411 587.16		R154	-21 887.43 3 411 628.20
L155	-22 096.71	3 411 602.86		R155	-21 997.27 3 411 650.54
L156	-22 470.60	3 411 555.72		R156	-22 041.99 3 411 649.20
L157	-22 651.67	3 411 529.12		R157	-22 065.53 3 411 646.69
L158	-22 904.33	3 411 492.01		R158	-22 539.56 3 411 583.17
L159	-23 052.17	3 411 438.26		R159	-22 658.16 3 411 565.64
L160	-23 180.26	3 411 364.05		R160	-22 913.84 3 411 527.84
L161	-23 444.26	3 411 096.08		R161	-23 105.33 3 411 455.23
L162	-23 466.20	3 411 073.82		R162	-23 285.19 3 411 320.91
L163	-23 780.65	3 411 101.38		R163	-23 443.79 3 411 178.58
L164	-23 842.57	3 411 129.39		R164	-23 570.88 3 411 128.65
L165	-24 310.28	3 411 351.00		R165	-23 597.30 3 411 118.27
L166	-24 600.38	3 411 173.71		R166	-23 751.33 3 411 133.94
L167	-24 889.32	3 411 115.21		R167	-23 868.36 3 411 198.29
L168	-25 870.77	3 410 808.23		R168	-24 082.48 3 411 381.92
L169	-26 285.31	3 410 561.70		R169	-24 182.85 3 411 412.82
L170	-26 453.47	3 410 520.38		R170	-24 349.82 3 411 401.07
L171	-26 977.31	3 410 512.02		R171	-24 404.72 3 411 372.84
L172	-27 388.11	3 410 508.99		R172	-24 412.48 3 411 347.10
L173	-27 822.45	3 410 505.79		R173	-24 650.44 3 411 198.02
L174	-27 946.09	3 410 484.95		R174	-24 926.12 3 411 149.02
L175	-28 401.71	3 410 343.53		R175	-25 836.97 3 410 873.19
L176	-28 635.76	3 410 336.48		R176	-26 373.94 3 410 574.53
L177	-28 796.46	3 410 291.33		R177	-26 955.75 3 410 555.01
L178	-28 909.62	3 410 206.79		R178	-27 401.09 3 410 542.89
L179	-29 172.71	3 409 948.42		R179	-27 931.98 3 410 528.44
L180	-29 375.65	3 409 861.90		R180	-28 038.27 3 410 494.78
L181	-29 520.21	3 409 849.48		R181	-28 467.53 3 410 376.73
L182	-29 716.48	3 409 849.51		R182	-28 640.21 3 410 373.39
L183	-30 602.25	3 409 849.64		R183	-28 790.29 3 410 339.93
L184	-30 806.75	3 409 760.83		R184	-28 948.12 3 410 227.43
L185	-30 930.28	3 409 707.19		R185	-29 264.44 3 409 942.42
L186	-31 366.64	3 409 287.44		R186	-29 419.48 3 409 895.71
L187	-31 607.46	3 409 126.56		R187	-29 526.11 3 409 885.84
L188	-31 944.52	3 409 013.38		R188	-29 723.02 3 409 885.86
L189	-32 284.89	3 408 995.65		R189	-29 740.39 3 409 885.86
L190	-33 126.81	3 409 015.60		R190	-30 298.35 3 409 885.90
L191	-33 614.97	3 409 027.10		R191	-30 606.52 3 409 885.92
L192	-34 002.90	3 409 036.24		R192	-30 720.00 3 409 852.09
L193	-34 090.48	3 409 031.11		R193	-30 816.81 3 409 805.09
L194	-34 320.11	3 408 983.44		R194	-30 954.03 3 409 738.47
L195	-34 350.99	3 408 977.03		R195	-31 392.11 3 409 315.42
L196	-34 762.36	3 408 891.63		R196	-31 647.54 3 409 159.12
L197	-34 983.39	3 408 700.56		R197	-31 709.96 3 409 122.85
L198	-35 208.75	3 407 928.95		R198	-31 975.08 3 409 052.79
L199	-35 362.61	3 407 402.16		R199	-32 286.06 3 409 037.59
L200	-35 464.45	3 407 034.60		R200	-32 665.90 3 409 045.78
L201	-35 559.25	3 406 826.67		R201	-33 101.09 3 409 055.17
L202	-35 683.00	3 406 679.24		R202	-33 529.78 3 409 064.89
L203	-35 920.46	3 406 491.51		R203	-33 586.88 3 409 066.18
L204	-36 557.00	3 405 570.73		R204	-34 042.43 3 409 076.51

Vel Sheet 19 Van of 22

P1011/17

PADRESERWE KOÖRDINATE / ROAD RESERVE CO-ORDINATES					
LINKERKANT/LEFT HAND SIDE			REGTERKANT/RIGHT HAND SIDE		
	Y	X	WG 29°	Y	X
L205	-37 106.60	3 405 194.55		R205	-34 145.80 3 409 064.45
L206	-37 235.31	3 405 130.85		R206	-34 325.86 3 409 023.66
L207	-37 381.86	3 405 065.46		R207	-34 351.14 3 409 017.94
L208	-37 658.64	3 404 997.54		R208	-34 557.60 3 408 971.17
L209	-37 900.05	3 404 979.98		R209	-34 796.89 3 408 916.96
L210	-38 406.59	3 405 024.21		R210	-34 871.48 3 408 882.46
L211	-38 495.87	3 405 006.18		R211	-34 882.56 3 408 875.28
L212	-38 571.41	3 404 964.02		R212	-34 992.54 3 408 771.87
L213	-38 616.02	3 404 922.91		R213	-35 021.79 3 408 721.12
L214	-38 758.99	3 404 791.14		R214	-35 055.57 3 408 623.82
L215	-38 829.06	3 404 741.82		R215	-35 256.33 3 407 940.25
L216	-38 912.88	3 404 714.15		R216	-35 410.72 3 407 414.56
L217	-39 016.98	3 404 694.83		R217	-35 503.10 3 407 059.67
L218	-39 141.83	3 404 695.26		R218	-35 566.01 3 406 907.44
L219	-39 239.21	3 404 674.48		R219	-35 710.64 3 406 714.08
L220	-39 315.47	3 404 639.77		R220	-35 967.85 3 406 504.46
L221	-39 379.01	3 404 587.64		R221	-36 523.70 3 405 667.40
L222	-39 411.35	3 404 543.44		R222	-36 613.85 3 405 573.08
L223	-39 766.07	3 403 946.78		R223	-37 102.57 3 405 243.60
L224	-40 415.52	3 402 853.46		R224	-37 246.32 3 405 167.07
L225	-40 531.57	3 402 690.08		R225	-37 413.82 3 405 098.96
L226	-40 574.00	3 402 630.43		R226	-37 528.75 3 405 064.41
L227	-40 582.49	3 402 618.48		R227	-37 668.35 3 405 037.18
L228	-40 585.97	3 402 613.59		R228	-37 781.97 3 405 023.70
L229	-40 704.90	3 402 482.16		R229	-37 922.69 3 405 020.52
L230	-40 887.82	3 402 280.23		R230	-38 374.17 3 405 064.92
L231	-40 944.53	3 402 237.11		R231	-38 484.89 3 405 052.70
L232	-40 958.54	3 402 220.54		R232	-38 610.40 3 404 995.07
L233	-41 196.60	3 401 939.04		R233	-38 658.32 3 404 947.99
L234	-41 205.99	3 401 927.94		R234	-38 805.93 3 404 802.96
L235	-41 241.43	3 401 841.52		R235	-38 878.66 3 404 765.79
L236	-41 252.71	3 401 747.14		R236	-38 941.70 3 404 740.26
L237	-41 244.46	3 401 676.02		R237	-39 019.28 3 404 732.88
L238	-41 229.92	3 401 639.50		R238	-39 130.47 3 404 738.95
L239	-41 214.80	3 401 601.55		R239	-39 258.56 3 404 717.73
L240	-41 175.22	3 401 531.62		R240	-39 333.77 3 404 673.63
L241	-41 095.64	3 401 419.98		R241	-39 410.26 3 404 622.37
L242	-41 053.27	3 401 343.92		R242	-39 455.71 3 404 559.51
L243	-41 040.62	3 401 250.06		R243	-39 785.03 3 403 991.09
L244	-41 039.27	3 401 187.84		R244	-40 442.57 3 402 887.73
L245	-41 038.60	3 401 156.73		R245	-40 618.98 3 402 643.74
L246	-41 186.65	3 400 440.57		R246	-40 638.68 3 402 616.50
L247	-41 209.26	3 400 331.20		R247	-40 727.89 3 402 511.96
L248	-41 213.26	3 400 311.85		R248	-40 920.46 3 402 307.78
L249	-41 279.57	3 400 157.29		R249	-40 961.75 3 402 263.10
L250	-42 037.22	3 398 924.67		R250	-41 017.33 3 402 200.32
L251	-42 192.87	3 398 658.48		R251	-41 221.69 3 401 969.48
L252	-42 389.78	3 398 186.96		R252	-41 251.21 3 401 936.13
L253	-42 726.72	3 397 380.10		R253	-41 297.27 3 401 748.60
L254	-42 816.24	3 397 165.74		R254	-41 263.10 3 401 601.55
L255	-42 827.63	3 397 138.47		R255	-41 113.61 3 401 387.65

Vel  
Sheet

20

Van  
of

22

P1011/17

PADRESERWE KOÖRDINATE / ROAD RESERVE CO-ORDINATES					
LINKERKANT/LEFT HAND SIDE			REGTERKANT/RIGHT HAND SIDE		
	Y	X	WG 29°	Y	X
L256	-42 874.70	3 397 025.77	R256	-41 092.04	3 401 334.59
L257	-42 985.49	3 396 819.58	R257	-41 076.39	3 401 242.40
L258	-43 089.81	3 396 675.76	R258	-41 082.28	3 401 162.12
L259	-43 218.76	3 396 532.92	R259	-41 221.46	3 400 466.29
L260	-43 320.49	3 396 448.24	R260	-41 248.32	3 400 331.98
L261	-43 442.34	3 396 361.37	R261	-41 304.75	3 400 195.07
L262	-43 755.52	3 396 174.00	R262	-42 069.07	3 398 942.22
L263	-43 888.68	3 396 094.33	R263	-42 225.39	3 398 677.90
L264	-44 047.44	3 395 915.91	R264	-42 422.19	3 398 210.03
L265	-44 120.96	3 395 734.24	R265	-42 761.44	3 397 403.52
L266	-44 123.21	3 395 728.68	R266	-42 850.72	3 397 191.27
L267	-44 127.44	3 395 693.21	R267	-42 871.52	3 397 141.81
L268	-44 186.09	3 395 200.84	R268	-42 912.52	3 397 044.35
L269	-44 252.62	3 395 085.11	R269	-43 024.69	3 396 833.98
L270	-44 294.77	3 395 030.43	R270	-43 207.94	3 396 602.16
L271	-44 346.40	3 394 990.05	R271	-43 333.63	3 396 488.79
L272	-44 408.00	3 394 959.34	R272	-43 473.62	3 396 387.10
L273	-44 455.97	3 394 938.94	R273	-43 787.38	3 396 194.57
L274	-44 529.50	3 394 923.76	R274	-43 930.90	3 396 106.51
L275	-44 740.36	3 394 913.17	R275	-44 089.56	3 395 936.56
L276	-44 866.79	3 394 879.12	R276	-44 128.97	3 395 817.28
L277	-44 942.74	3 394 821.83	R277	-44 165.62	3 395 711.90
L278	-45 015.13	3 394 752.71	R278	-44 168.67	3 395 691.00
L279	-45 173.42	3 394 408.31	R279	-44 172.42	3 395 665.42
L280	-45 194.20	3 394 280.19	R280	-44 241.34	3 395 194.30
L281	-45 197.24	3 393 873.61	R281	-44 260.23	3 395 134.95
L282	-45 226.68	3 393 774.17	R282	-44 292.09	3 395 097.97
L283	-45 260.27	3 393 716.43	R283	-44 345.19	3 395 036.48
L284	-45 519.02	3 393 365.56	R284	-44 415.67	3 394 997.11
L285	-45 532.93	3 393 327.22	R285	-44 476.86	3 394 974.38
L286	-45 539.13	3 393 288.28	R286	-44 546.22	3 394 962.27
L287	-45 531.36	3 393 209.38	R287	-44 767.59	3 394 953.22
L288	-45 519.82	3 393 172.11	R288	-44 846.04	3 394 930.22
L289	-45 409.92	3 393 009.48	R289	-44 915.36	3 394 893.18
L290	-45 391.55	3 392 956.82	R290	-44 983.57	3 394 837.21
L291	-45 342.53	3 392 690.19	R291	-45 050.11	3 394 763.77
L292	-45 309.68	3 392 631.83	R292	-45 098.56	3 394 669.89
L293	-45 249.80	3 392 581.13	R293	-45 223.02	3 394 370.83
L294	-45 100.59	3 392 522.31	R294	-45 230.69	3 394 317.72
L295	-45 056.42	3 392 492.71	R295	-45 234.41	3 393 867.54
L296	-45 023.24	3 392 460.26	R296	-45 263.71	3 393 774.71
L297	-44 966.47	3 392 377.67	R297	-45 317.95	3 393 698.84
L298	-44 949.56	3 392 276.57	R298	-45 547.31	3 393 411.51
L299	-44 942.74	3 391 943.94	R299	-45 581.53	3 393 320.16
L300	-44 955.41	3 391 830.78	R300	-45 585.10	3 393 280.17
L301	-44 977.20	3 391 766.31	R301	-45 577.23	3 393 223.59
L302	-45 025.80	3 391 683.93	R302	-45 558.37	3 393 173.85
L303	-45 087.36	3 391 625.01	R303	-45 490.68	3 393 061.92
L304	-45 161.44	3 391 566.05	R304	-45 424.75	3 392 951.24
L305	-45 238.71	3 391 535.76	R305	-45 387.19	3 392 721.75
L306	-45 354.63	3 391 519.76	R306	-45 356.33	3 392 637.16

Vel Sheet	21	Van of	22	P1011/17
-----------	----	--------	----	----------

PADRESERWE KOÖRDINATE / ROAD RESERVE CO-ORDINATES					
LINKERKANT/LEFT HAND SIDE			REGTERKANT/RIGHT HAND SIDE		
	Y	X	WG 29°	Y	X
L307	-45 485.90	3 391 662.81		R307	-45 279.98 3 392 558.07
L308	-45 535.20	3 391 721.22		R308	-45 079.93 3 392 463.44
L309	-45 630.80	3 391 737.27		R309	-45 002.65 3 392 360.84
L310	-45 692.80	3 391 722.51		R310	-44 985.13 3 391 893.83
L311	-45 736.26	3 391 676.33		R311	-45 005.54 3 391 809.39
L312	-45 862.33	3 391 492.56		R312	-45 040.93 3 391 736.98
L313	-45 848.58	3 391 383.35		R313	-45 078.59 3 391 694.49
L314	-45 809.65	3 391 054.87		R314	-45 115.89 3 391 656.24
L315	-45 772.81	3 391 005.56		R315	-45 241.65 3 391 585.99
L316	-45 699.17	3 390 970.95		R316	-45 272.01 3 391 574.88
L317	-45 605.05	3 390 978.16		R317	-45 350.52 3 391 601.82
L318	-45 522.21	3 390 959.00		R318	-45 406.14 3 391 678.18
L319	-45 415.00	3 390 915.53		R319	-45 478.09 3 391 764.95
L320	-45 318.40	3 390 888.91		R320	-45 565.90 3 391 819.39
L321	-45 241.43	3 390 846.29		R321	-45 681.84 3 391 819.46
L322	-45 233.14	3 390 774.65		R322	-45 722.10 3 391 797.67
L323	-45 284.21	3 390 703.83		R323	-45 844.84 3 391 666.58
L324	-45 269.41	3 390 650.56		R324	-45 920.52 3 391 522.74
L325	-45 202.41	3 390 574.62		R325	-45 923.70 3 391 432.65
L326	-45 184.72	3 390 524.72		R326	-45 840.34 3 391 017.08
L327	-45 168.68	3 390 474.87		R327	-45 810.11 3 390 972.97
L328	-45 189.93	3 390 377.81		R328	-45 761.31 3 390 933.89
L329	-45 242.20	3 390 317.85		R329	-45 632.69 3 390 911.47
L330	-45 364.49	3 390 164.71		R330	-45 549.71 3 390 898.99
L331	-45 454.21	3 390 024.02		R331	-45 490.44 3 390 870.67
L332	-45 469.29	3 389 908.38		R332	-45 485.08 3 390 788.43
L333	-45 459.14	3 389 840.84		R333	-45 401.97 3 390 688.08
L334	-45 436.80	3 389 778.84		R334	-45 352.71 3 390 643.46
L335	-45 279.34	3 389 557.96		R335	-45 261.76 3 390 569.58
L336	-45 293.81	3 389 432.61		R336	-45 240.78 3 390 550.35
				R337	-45 213.39 3 390 509.61
				R338	-45 209.96 3 390 452.42
				R339	-45 226.08 3 390 416.33
				R340	-45 391.91 3 390 248.34
				R341	-45 462.18 3 390 132.23
				R342	-45 526.90 3 390 013.78
				R343	-45 527.55 3 389 929.60
				R344	-45 484.65 3 389 760.01
				R345	-45 360.63 3 389 568.57
				R346	-45 353.07 3 389 534.99
				R347	-45 361.94 3 389 420.69

Vel Sheet	22	Van of	22	P1011/17
-----------	----	--------	----	----------