

---

**GOVERNMENT NOTICES • GOEWERMENTSKENNISGEWINGS**

---

**DEPARTMENT OF TRANSPORT****NO. 515****23 MAY 2018****THE SOUTH AFRICAN NATIONAL ROADS  
AGENCY SOC LIMITED****Registration No: 1998/009584/30**

---

**DECLARATION AMENDMENT OF NATIONAL ROAD N6 SECTION 2****AMENDMENT OF DECLARATION No. 2136 OF 1992.**

By virtue of section 40(1)(b) of the South African National Roads Agency Limited and the National Roads Act, 1998 (Act No. 7 of 1998), I hereby amend Declaration No. 2136 of 1992 by substituting paragraph 6 of the Schedule, being the descriptive declaration of the route from Stutterheim up to Cathcart, with the accompanying sheets 1 to 20 of Plan No. P953/17.

In the town of Stutterheim the N6 Section 2 enters the town from the South and follows the street known as Maclean Street at the time of declaration.

In the town of Cathcart the N6 Section 2 enters the town from the South and follows the street known as Robinson Street at the time of declaration.

**(National Road N6 Section 2: Stutterheim - Cathcart)**  

---

**MINISTER OF TRANSPORT**

## DEPARTEMENT VAN VERVOER

NO. 515

23 MEI 2018

**DIE SUID-AFRIKAANSE NASIONALE  
PADAGENTSKAP MSB BEPERK**

Registrasie No: 1998/009584/30

**VERKLARING WYSIGING VAN NASIONALE PAD N6 SEKSIE 2**

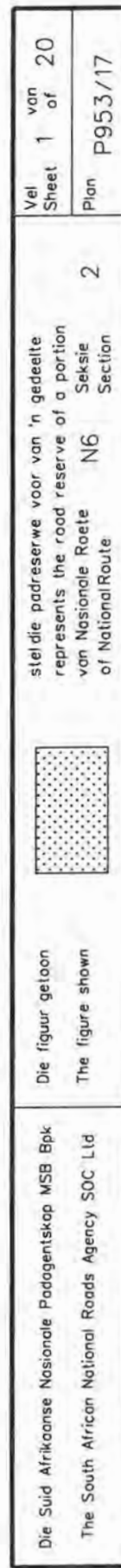
WYSIGING VAN VERKLARING No. 2136 VAN 1992.

Kragtens Artikel 40(1)(b) van die Wet op die Suid-Afrikaanse Nasionale Padagentskap Beperk en op Nasionale Paaie, Wet 1998 (Wet No. 7 van 1998), wysig ek hiermee Verklaring No. 2136 van 1992 deur paragraaf 6 van die Skedule te vervang, synde die gedeelte van die beskrywende verklaring van die pad vanaf Stutterheim tot by Cathcart, met bygaande velle 1 tot 20 van Plan No. P953/17.

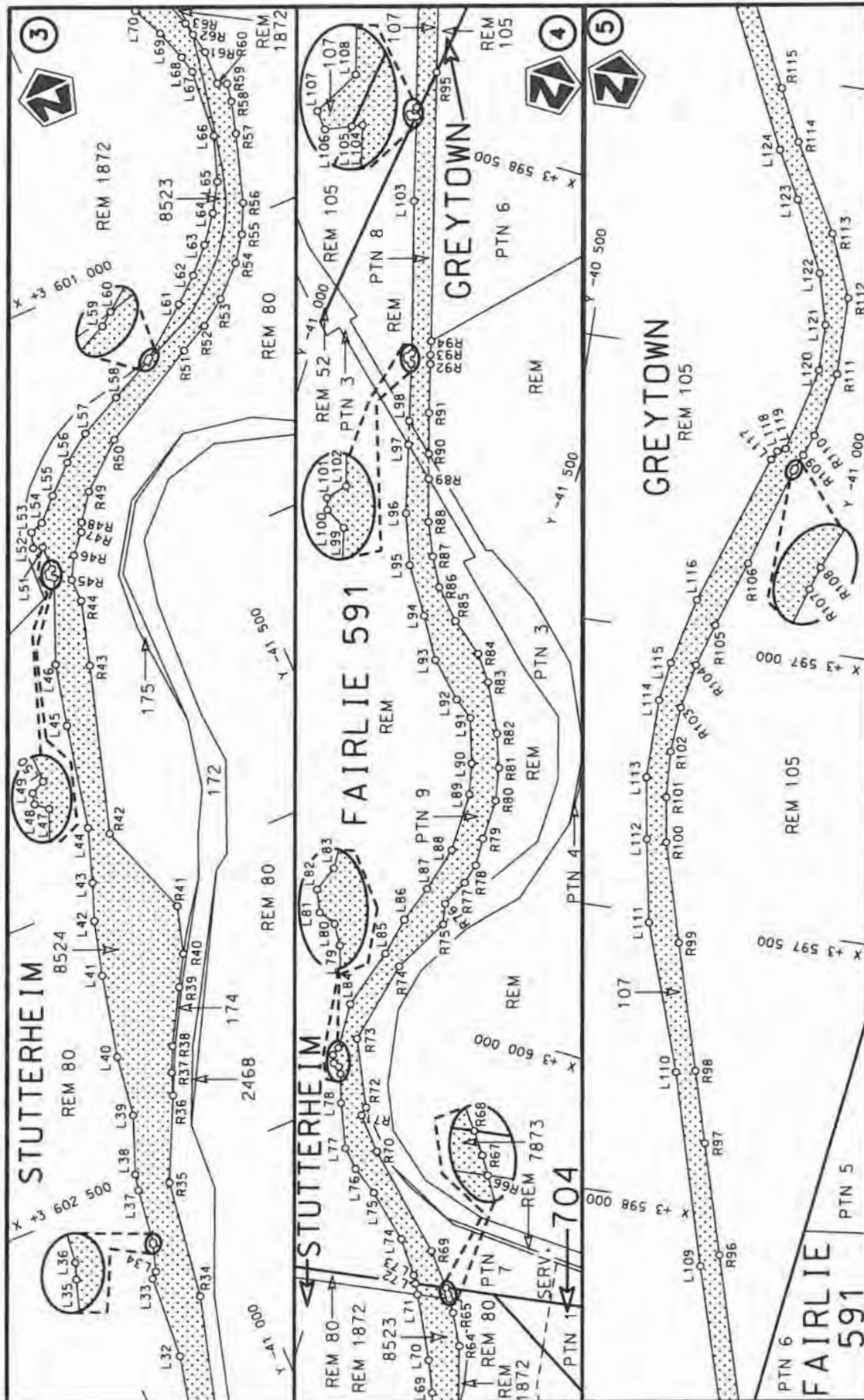
In die dorp van Stutterheim kom die N6 Seksie 2 die dorp binne vanuit die Suide en volg die straat bekend as Macleanstraat tydens datum van verklaring.

In die dorp van Cathcart kom die N6 Seksie 2 die dorp binne vanuit die Suide en volg die straat bekend as Robinsonstraat tydens datum van verklaring.

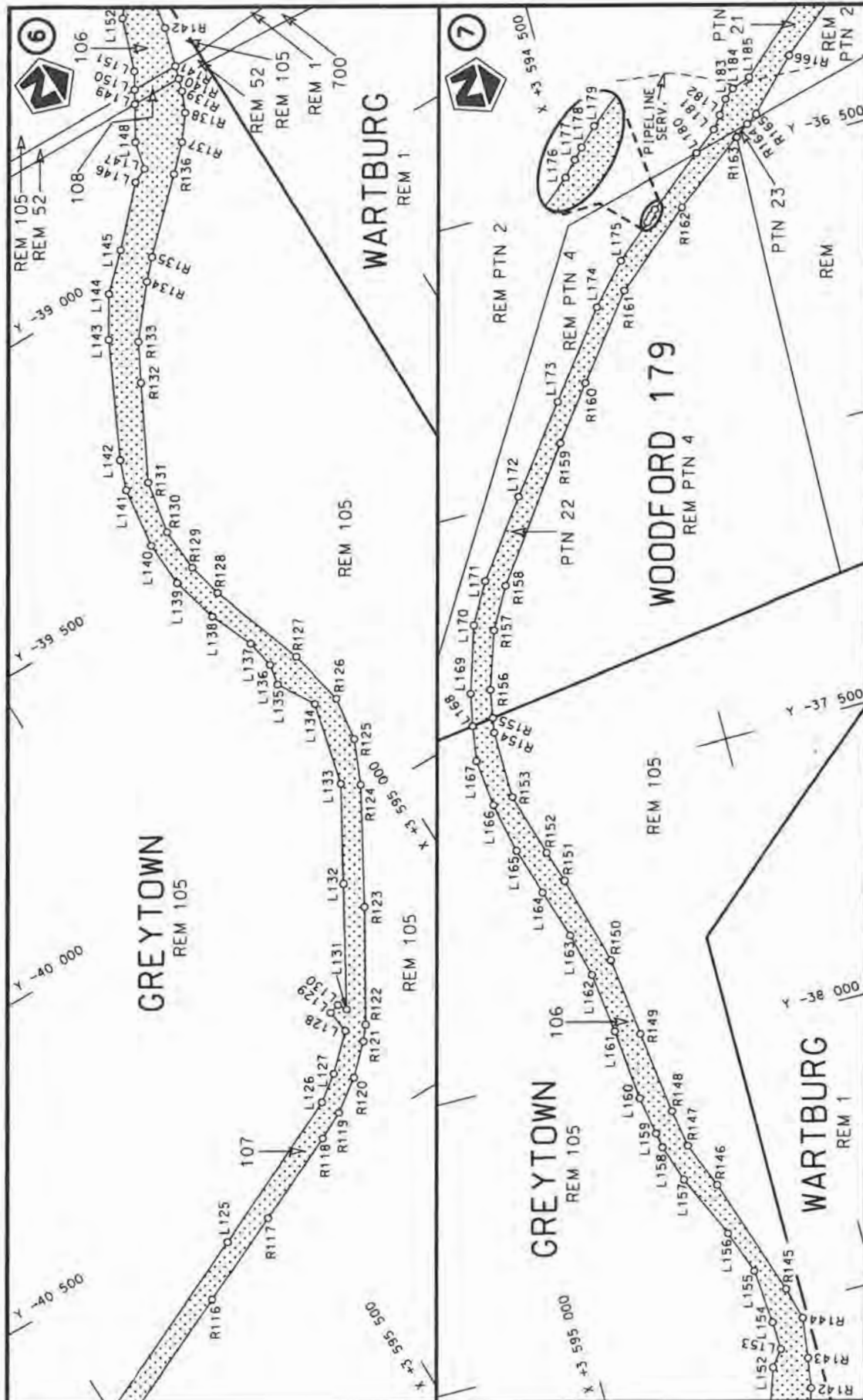
**(Nasionale Pad N6 Seksie 2: Stutterheim - Cathcart)**  
MINISTER VAN VERVOER





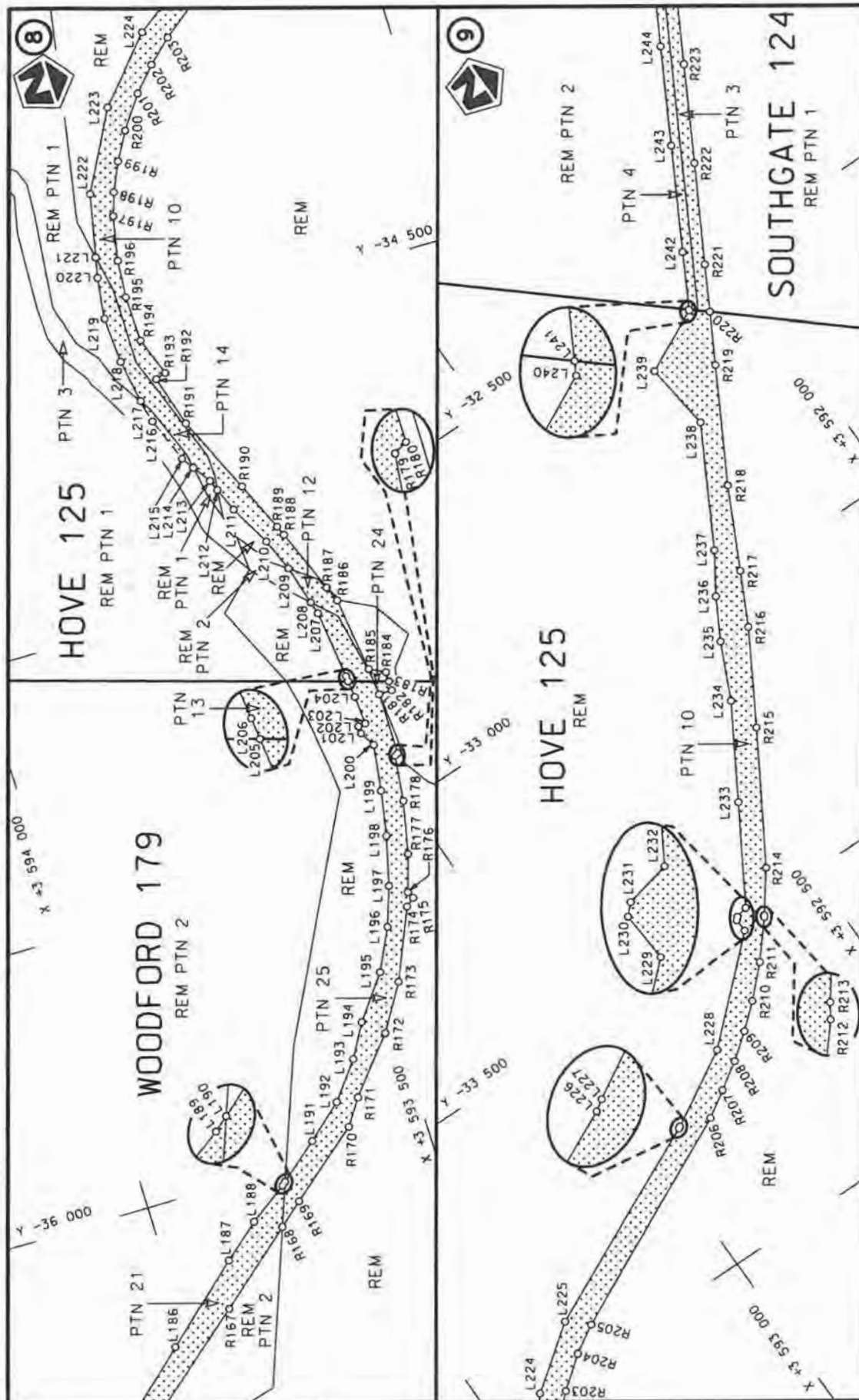


Die Suid Afrikaanse Nasionale Padagentskap MSB Bpk The South African National Roads Agency SOC Ltd	Die figuur getoon The figure shown	stel die padreserwe voor van 'n gedeelte represents the road reserve of a portion van Nasionale Roete N6 of National Route	Vel Sheet 2 of 20 Plan P953/17
---	---------------------------------------	---	--------------------------------------

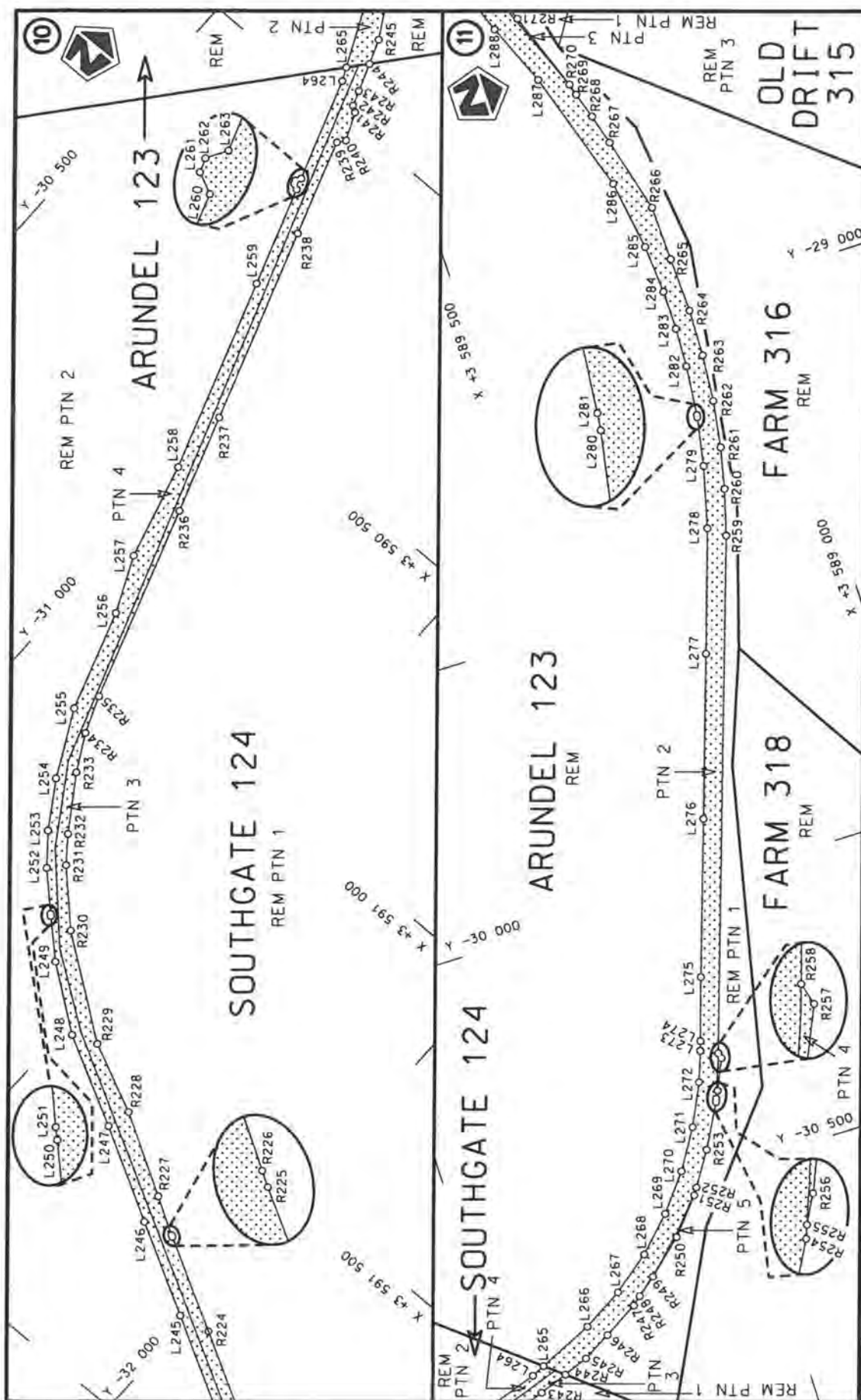


Die Suid Afrikaanse Nasionale Padagentskap MSB Bpk The South African National Roads Agency SOC Ltd	Die figuur getoon The figure shown	steldie padreserwe voor van 'n gedeelte represents the road reserve of a portion van Nasionale Roete N6 of National Route	Vel Sheet 3 of 20 Plan P953/17
---	---------------------------------------	--	--------------------------------------





Die Suid Afrikaanse Nasionale Padagentskap MSB Bpk The South African National Roads Agency SOC Ltd	Die figuur getoon The figure shown	stel die padreserwe voor van 'n gedeelte represents the road reserve of a portion van Nasionale Roete N6 of National Route	Vel Sheet 4 of 20
	2	Plan P953/17	



Vel  
Sheet 5 of 20

Plan  
P953/17

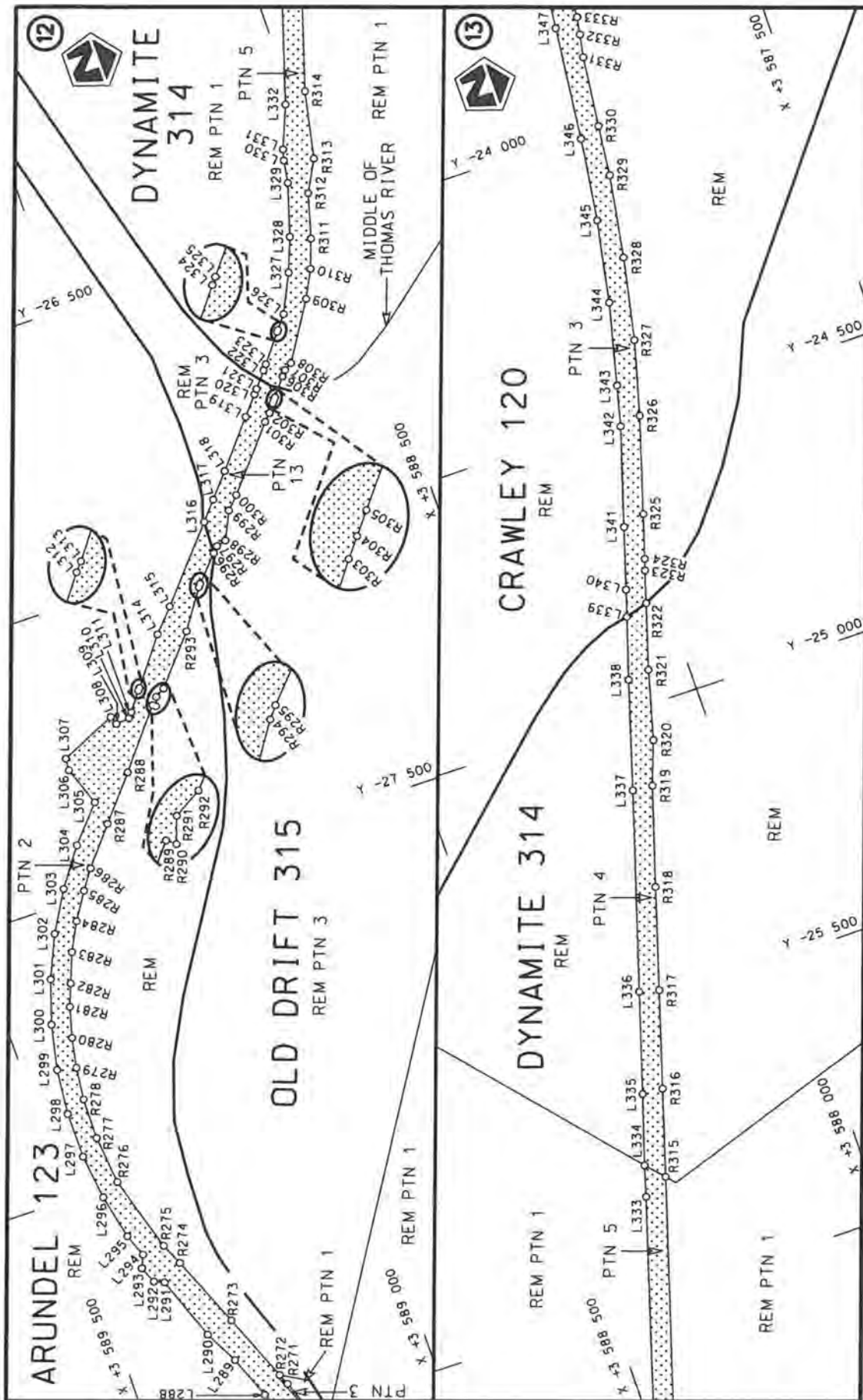
stelt die padreserwe voor van 'n gedeelte  
represents the road reserve of a portion  
van Nasionale Roete N6 Seksie  
of National Route Section



Die figuur getoon  
The figure shown

Die Suid-Afrikaanse Nasionale Padagentskap MSB Bpk  
The South African National Roads Agency SOC Ltd





Vel  
Sheet 6 of 20

Plan  
P953/17

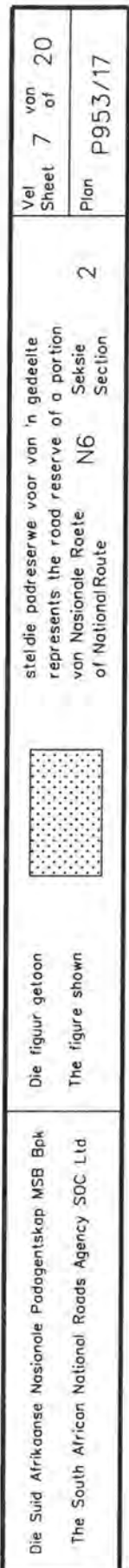
stel die padreserwe voor van 'n gedeelte  
represents the road reserve of a portion  
van Nasionale Roete N6 Seksie  
of National Route Section 2

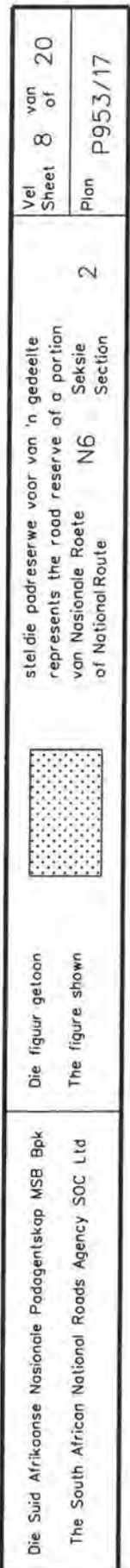


Die figuur getoon  
The figure shown

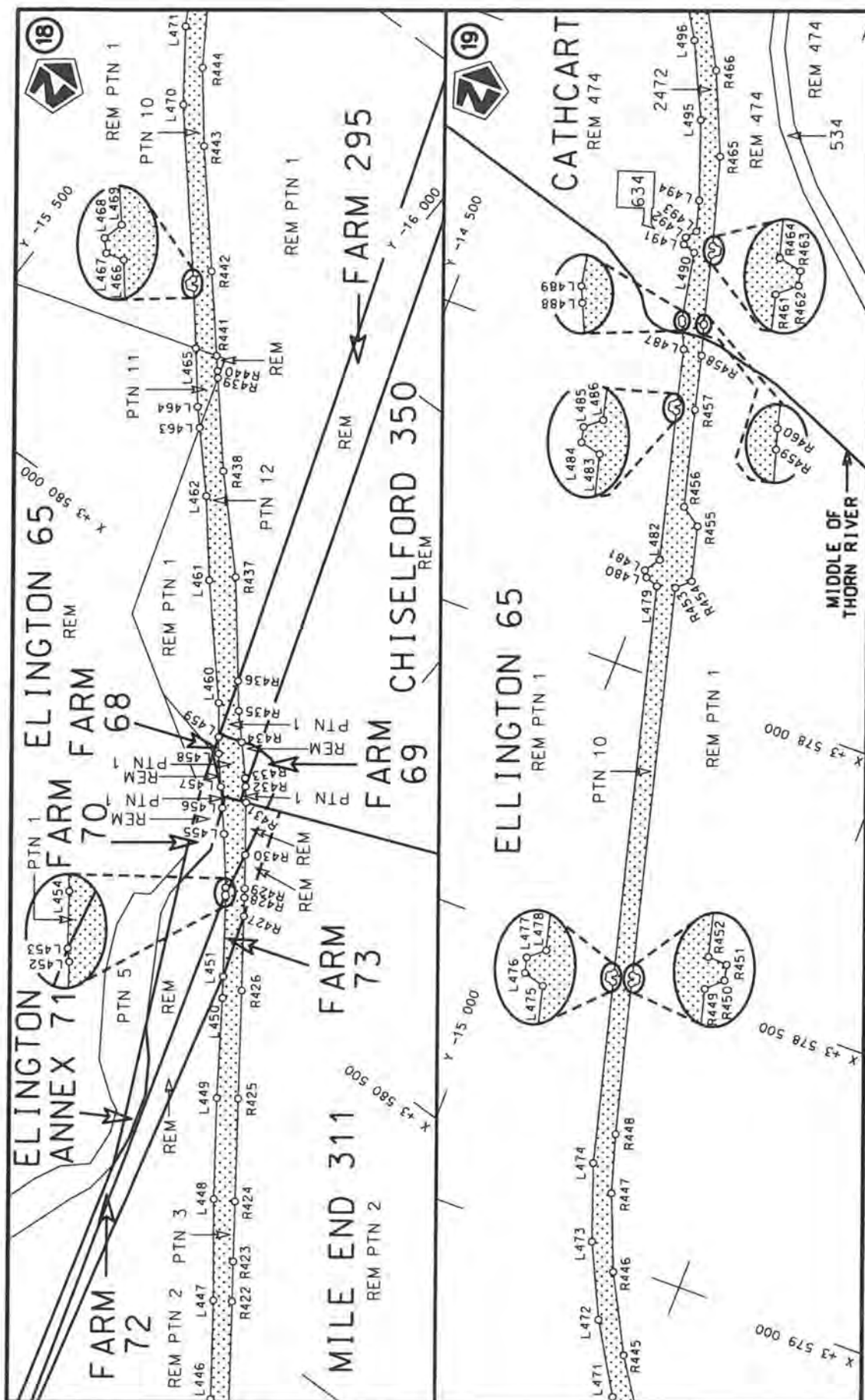
Die Suid Afrikaanse Nasionale Padagentskap MSB Bpk  
The South African National Roads Agency SOC Ltd











Die Suid Afrikaanse Nasionale Padagentskap MSB Bpk  
The South African National Roads Agency SOC Ltd

Die figuur getoon  
The figure shown



stelt die padreserwe voor van 'n gedeelte  
represents the road reserve of a portion  
van Nasionale Roete N6  
of National Route

Vel  
Sheet 9 of 20

Plan  
P953/17





PADRESERWE KOÖRDINATE / ROAD RESERVE CO-ORDINATES										
LINKERKANT/LEFT HAND SIDE						REGTERKANT/RIGHT HAND SIDE				
	Y		X	WG 27°			Y		X	
L1	-40 299.98	3	604	717.05	R1	-40 335.21	3	604	723.63	
L2	-40 305.01	3	604	699.95	R2	-40 337.01	3	604	721.95	
L3	-40 304.70	3	604	676.77	R3	-40 344.38	3	604	687.80	
L4	-40 315.20	3	604	637.58	R4	-40 345.13	3	604	684.32	
L5	-40 326.16	3	604	598.47	R5	-40 351.05	3	604	651.15	
L6	-40 337.12	3	604	559.36	R6	-40 352.24	3	604	644.49	
L7	-40 343.94	3	604	534.93	R7	-40 357.88	3	604	621.78	
L8	-40 345.84	3	604	532.73	R8	-40 359.88	3	604	613.79	
L9	-40 354.28	3	604	521.47	R9	-40 369.98	3	604	573.41	
L10	-40 359.16	3	604	522.00	R10	-40 376.29	3	604	548.21	
L11	-40 366.13	3	604	495.96	R11	-40 377.20	3	604	544.51	
L12	-40 357.36	3	604	486.88	R12	-40 380.14	3	604	525.77	
L13	-40 359.33	3	604	482.04	R13	-40 386.76	3	604	516.41	
L14	-40 376.99	3	604	402.15	R14	-40 391.91	3	604	490.41	
L15	-40 396.00	3	604	322.42	R15	-40 393.83	3	604	483.99	
L16	-40 408.71	3	604	243.30	R16	-40 419.39	3	604	407.40	
L17	-40 424.85	3	603	988.45	R17	-40 430.44	3	604	327.27	
L18	-40 433.92	3	603	935.66	R18	-40 447.73	3	604	207.33	
L19	-40 446.44	3	603	883.11	R19	-40 452.43	3	604	112.99	
L20	-40 488.73	3	603	732.60	R20	-40 454.15	3	604	019.12	
L21	-40 505.41	3	603	713.88	R21	-40 461.60	3	603	965.47	
L22	-40 545.00	3	603	685.56	R22	-40 473.73	3	603	912.99	
L23	-40 602.95	3	603	565.18	R23	-40 493.60	3	603	862.96	
L24	-40 630.99	3	603	489.49	R24	-40 520.08	3	603	816.18	
L25	-40 663.66	3	603	386.41	R25	-40 562.31	3	603	722.45	
L26	-40 707.27	3	603	273.39	R26	-40 600.73	3	603	667.63	
L27	-40 737.54	3	603	173.55	R27	-40 627.11	3	603	621.47	
L28	-40 738.66	3	603	169.96	R28	-40 649.92	3	603	572.63	
L29	-40 766.40	3	603	078.37	R29	-40 675.24	3	603	509.31	
L30	-40 784.78	3	602	986.23	R30	-40 677.47	3	603	480.77	
L31	-40 807.96	3	602	909.22	R31	-40 692.40	3	603	430.43	
L32	-40 833.34	3	602	804.65	R32	-40 708.70	3	603	395.31	
L33	-40 845.59	3	602	659.88	R33	-40 779.58	3	603	160.83	
L34	-40 855.74	3	602	650.51	R34	-40 907.33	3	602	721.54	
L35	-40 871.21	3	602	604.05	R35	-40 940.40	3	602	515.62	
L36	-40 872.52	3	602	600.47	R36	-41 007.98	3	602	375.95	
L37	-40 886.26	3	602	506.53	R37	-41 022.41	3	602	337.71	
L38	-40 892.73	3	602	478.80	R38	-41 042.16	3	602	295.91	
L39	-40 931.52	3	602	380.34	R39	-41 094.63	3	602	204.05	
L40	-40 948.50	3	602	275.24	R40	-41 124.91	3	602	152.30	
L41	-40 982.81	3	602	132.22	R41	-41 149.29	3	602	071.35	
L42	-41 009.63	3	602	038.25	R42	-41 095.70	3	601	906.56	
L43	-41 034.06	3	601	974.54	R43	-41 184.75	3	601	619.17	
L44	-41 066.57	3	601	882.06	R44	-41 217.49	3	601	508.42	
L45	-41 106.39	3	601	701.74	R45	-41 217.76	3	601	467.96	
L46	-41 132.48	3	601	594.18	R46	-41 238.77	3	601	428.89	
L47	-41 191.65	3	601	452.62	R47	-41 266.77	3	601	396.20	
L48	-41 185.17	3	601	446.83	R48	-41 273.99	3	601	380.64	
L49	-41 186.80	3	601	440.33	R49	-41 306.78	3	601	336.10	
L50	-41 194.90	3	601	436.56	R50	-41 383.18	3	601	268.81	
L51	-41 195.96	3	601	394.68	R51	-41 555.65	3	601	172.56	
						Vel Sheet	11	Van of	20	P953/17



PADRESERWE KOÖRDINATE / ROAD RESERVE CO-ORDINATES									
LINKERKANT/LEFT HAND SIDE					REGTERKANT/RIGHT HAND SIDE				
	Y		X	WG 27°		Y		X	
L52	-41 180.88	3	601	389.48	R52	-41 604.55	3	601	146.23
L53	-41 189.36	3	601	362.99	R53	-41 648.95	3	601	113.34
L54	-41 212.05	3	601	354.14	R54	-41 698.05	3	601	065.20
L55	-41 247.82	3	601	318.17	R55	-41 728.59	3	601	022.67
L56	-41 294.27	3	601	274.12	R56	-41 752.58	3	600	972.96
L57	-41 343.06	3	601	238.79	R57	-41 790.58	3	600	854.90
L58	-41 416.19	3	601	200.95	R58	-41 806.29	3	600	799.03
L59	-41 490.71	3	601	164.28	R59	-41 811.96	3	600	767.35
L60	-41 495.74	3	601	160.31	R60	-41 797.25	3	600	760.52
L61	-41 580.47	3	601	093.32	R61	-41 800.31	3	600	701.11
L62	-41 623.54	3	601	055.96	R62	-41 793.96	3	600	664.23
L63	-41 662.62	3	601	014.03	R63	-41 790.19	3	600	640.58
L64	-41 697.70	3	600	968.72	R64	-41 762.83	3	600	547.02
L65	-41 727.53	3	600	920.52	R65	-41 735.66	3	600	494.00
L66	-41 754.80	3	600	843.24	R66	-41 722.47	3	600	472.32
L67	-41 766.46	3	600	724.61	R67	-41 717.65	3	600	464.40
L68	-41 760.08	3	600	693.48	R68	-41 711.15	3	600	454.99
L69	-41 743.55	3	600	639.66	R69	-41 668.55	3	600	399.04
L70	-41 721.03	3	600	585.70	R70	-41 528.05	3	600	257.23
L71	-41 668.71	3	600	480.27	R71	-41 484.16	3	600	203.20
L72	-41 659.46	3	600	462.67	R72	-41 487.32	3	600	187.68
L73	-41 652.44	3	600	449.30	R73	-41 436.96	3	600	075.84
L74	-41 613.72	3	600	393.51	R74	-41 467.78	3	599	932.01
L75	-41 544.73	3	600	329.09	R75	-41 516.61	3	599	839.25
L76	-41 502.50	3	600	297.57	R76	-41 509.46	3	599	804.14
L77	-41 474.83	3	600	267.36	R77	-41 529.79	3	599	758.52
L78	-41 443.98	3	600	192.86	R78	-41 539.09	3	599	723.65
L79	-41 427.64	3	600	143.27	R79	-41 536.71	3	599	674.73
L80	-41 421.01	3	600	131.93	R80	-41 537.36	3	599	603.96
L81	-41 410.91	3	600	128.10	R81	-41 525.50	3	599	547.27
L82	-41 405.43	3	600	115.44	R82	-41 504.50	3	599	489.82
L83	-41 410.92	3	600	100.72	R83	-41 462.95	3	599	406.38
L84	-41 407.48	3	600	020.32	R84	-41 431.90	3	599	362.86
L85	-41 438.55	3	599	917.05	R85	-41 378.43	3	599	319.33
L86	-41 451.76	3	599	850.67	R86	-41 334.30	3	599	269.48
L87	-41 472.54	3	599	787.37	R87	-41 307.85	3	599	220.38
L88	-41 492.22	3	599	709.22	R88	-41 282.85	3	599	163.66
L89	-41 491.14	3	599	606.02	R89	-41 260.75	3	599	090.69
L90	-41 479.26	3	599	552.88	R90	-41 247.88	3	599	048.22
L91	-41 453.21	3	599	475.96	R91	-41 226.76	3	598	978.51
L92	-41 421.53	3	599	451.38	R92	-41 203.18	3	598	894.88
L93	-41 366.28	3	599	394.44	R93	-41 198.69	3	598	879.63
L94	-41 325.17	3	599	325.39	R94	-41 192.52	3	598	855.93
L95	-41 275.17	3	599	246.42	R95	-41 060.32	3	598	397.21
L96	-41 241.76	3	599	159.80	R96	-40 969.67	3	598	082.01
L97	-41 210.05	3	599	042.72	R97	-40 914.61	3	597	889.64
L98	-41 199.01	3	599	001.95	R98	-40 878.88	3	597	764.70
L99	-41 172.45	3	598	903.89	R99	-40 815.83	3	597	544.42
L100	-41 163.42	3	598	898.31	R100	-40 766.85	3	597	371.54
L101	-41 161.72	3	598	893.37	R101	-40 754.37	3	597	291.98
L102	-41 168.06	3	598	886.10	R102	-40 749.86	3	597	211.28
Vel Sheet 12					Van of 20 P953/17				



PADRESERWE KOÖRDINATE / ROAD RESERVE CO-ORDINATES						
LINKERKANT/LEFT HAND SIDE				REGTERKANT/RIGHT HAND SIDE		
	Y	X	WG 27°		Y	X
L103	-41 091.79	3 598 626.55		R103	-40 754.97	3 597 131.36
L104	-41 051.26	3 598 481.26		R104	-40 768.82	3 597 052.56
L105	-41 050.01	3 598 481.81		R105	-40 790.79	3 596 978.50
L106	-41 042.29	3 598 485.21		R106	-40 829.37	3 596 861.13
L107	-41 038.31	3 598 480.17		R107	-40 880.58	3 596 688.22
L108	-41 046.31	3 598 465.64		R108	-40 882.22	3 596 683.14
L109	-40 940.64	3 598 106.35		R109	-40 892.45	3 596 657.75
L110	-40 846.17	3 597 771.89		R110	-40 905.92	3 596 620.33
L111	-40 759.77	3 597 515.98		R111	-40 926.93	3 596 507.12
L112	-40 733.59	3 597 370.80		R112	-40 925.09	3 596 371.15
L113	-40 715.84	3 597 262.33		R113	-40 880.95	3 596 261.12
L114	-40 716.05	3 597 123.94		R114	-40 798.43	3 596 109.20
L115	-40 725.70	3 597 055.42		R115	-40 755.56	3 596 018.54
L116	-40 752.61	3 596 938.48		R116	-40 627.62	3 595 748.11
L117	-40 839.91	3 596 673.38		R117	-40 553.92	3 595 592.16
L118	-40 848.21	3 596 657.34		R118	-40 481.43	3 595 439.29
L119	-40 861.38	3 596 650.73		R119	-40 456.68	3 595 391.88
L120	-40 895.78	3 596 504.42		R120	-40 416.95	3 595 337.67
L121	-40 894.38	3 596 423.93		R121	-40 369.93	3 595 290.80
L122	-40 870.46	3 596 334.20		R122	-40 346.47	3 595 272.14
L123	-40 812.85	3 596 210.80		R123	-40 166.55	3 595 166.04
L124	-40 769.86	3 596 127.90		R124	-39 977.80	3 595 059.73
L125	-40 553.60	3 595 672.86		R125	-39 902.75	3 595 027.23
L126	-40 425.55	3 595 406.96		R126	-39 824.89	3 595 016.15
L127	-40 393.07	3 595 363.77		R127	-39 725.85	3 595 036.41
L128	-40 337.79	3 595 307.33		R128	-39 558.86	3 595 092.27
L129	-40 297.57	3 595 312.73		R129	-39 497.45	3 595 106.04
L130	-40 292.31	3 595 294.70		R130	-39 421.53	3 595 110.48
L131	-40 306.74	3 595 286.12		R131	-39 328.64	3 595 092.39
L132	-40 112.95	3 595 175.39		R132	-39 171.35	3 595 011.70
L133	-39 958.61	3 595 087.68		R133	-39 106.06	3 594 977.38
L134	-39 814.03	3 595 052.72		R134	-39 022.21	3 594 910.30
L135	-39 750.93	3 595 088.92		R135	-38 989.21	3 594 880.39
L136	-39 714.80	3 595 082.30		R136	-38 882.96	3 594 772.36
L137	-39 665.04	3 595 090.62		R137	-38 841.36	3 594 731.25
L138	-39 589.85	3 595 121.31		R138	-38 799.78	3 594 699.72
L139	-39 507.93	3 595 142.35		R139	-38 763.78	3 594 684.56
L140	-39 427.51	3 595 145.99		R140	-38 741.94	3 594 678.06
L141	-39 320.90	3 595 131.09		R141	-38 719.72	3 594 671.44
L142	-39 270.53	3 595 112.83		R142	-38 652.35	3 594 651.38
L143	-39 076.72	3 595 018.81		R143	-38 599.96	3 594 643.09
L144	-39 007.34	3 594 976.75		R144	-38 528.28	3 594 633.27
L145	-38 951.46	3 594 919.53		R145	-38 471.58	3 594 647.50
L146	-38 861.36	3 594 835.89		R146	-38 261.18	3 594 716.09
L147	-38 848.59	3 594 810.48		R147	-38 181.16	3 594 747.07
L148	-38 800.19	3 594 799.19		R148	-38 114.43	3 594 757.99
L149	-38 741.95	3 594 765.38		R149	-37 967.46	3 594 774.93
L150	-38 719.40	3 594 752.29		R150	-37 827.57	3 594 790.31
L151	-38 691.03	3 594 735.82		R151	-37 671.06	3 594 830.99
L152	-38 600.27	3 594 704.76		R152	-37 615.08	3 594 847.76
L153	-38 572.25	3 594 683.42		R153	-37 504.47	3 594 878.89
				Vel Sheet	13 Van of 20	P953/17



PADRESERWE KOÖRDINATE / ROAD RESERVE CO-ORDINATES									
LINKERKANT/LEFT HAND SIDE					REGTERKANT/RIGHT HAND SIDE				
	Y		X	WG 27°		Y		X	
L154	-38 522.36	3	594 685.26		R154	-37 385.99	3	594 879.75	
L155	-38 425.83	3	594 693.02		R155	-37 359.96	3	594 875.21	
L156	-38 349.19	3	594 719.94		R156	-37 310.21	3	594 866.53	
L157	-38 236.82	3	594 769.04		R157	-37 210.00	3	594 833.66	
L158	-38 172.60	3	594 789.99		R158	-37 138.62	3	594 794.32	
L159	-38 145.76	3	594 794.13		R159	-36 918.32	3	594 639.93	
L160	-38 077.71	3	594 805.14		R160	-36 826.18	3	594 571.63	
L161	-37 951.54	3	594 815.97		R161	-36 684.95	3	594 465.28	
L162	-37 844.83	3	594 828.28		R162	-36 567.65	3	594 332.66	
L163	-37 767.60	3	594 846.65		R163	-36 471.51	3	594 209.90	
L164	-37 681.26	3	594 872.38		R164	-36 453.54	3	594 186.39	
L165	-37 598.06	3	594 896.40		R165	-36 440.72	3	594 166.70	
L166	-37 510.14	3	594 913.77		R166	-36 354.59	3	594 085.32	
L167	-37 426.38	3	594 921.49		R167	-36 212.71	3	593 917.63	
L168	-37 365.30	3	594 911.87		R168	-36 100.06	3	593 787.85	
L169	-37 308.38	3	594 900.29		R169	-36 065.18	3	593 747.67	
L170	-37 192.35	3	594 864.34		R170	-35 962.91	3	593 628.37	
L171	-37 121.67	3	594 825.71		R171	-35 917.65	3	593 598.18	
L172	-36 991.43	3	594 732.86		R172	-35 822.07	3	593 520.67	
L173	-36 845.65	3	594 625.48		R173	-35 741.43	3	593 472.44	
L174	-36 701.34	3	594 518.39		R174	-35 618.08	3	593 420.17	
L175	-36 631.88	3	594 457.41		R175	-35 606.31	3	593 405.48	
L176	-36 578.06	3	594 396.08		R176	-35 593.93	3	593 411.33	
L177	-36 571.46	3	594 390.23		R177	-35 528.89	3	593 391.27	
L178	-36 566.88	3	594 386.05		R178	-35 436.65	3	593 372.00	
L179	-36 559.06	3	594 378.44		R179	-35 355.55	3	593 362.40	
L180	-36 480.79	3	594 284.12		R180	-35 352.09	3	593 356.51	
L181	-36 447.85	3	594 244.43		R181	-35 243.18	3	593 357.17	
L182	-36 425.93	3	594 227.83		R182	-35 242.61	3	593 334.50	
L183	-36 401.45	3	594 211.32		R183	-35 225.96	3	593 334.67	
L184	-36 386.76	3	594 194.35		R184	-35 208.79	3	593 334.84	
L185	-36 374.42	3	594 162.33		R185	-35 194.76	3	593 361.19	
L186	-36 250.75	3	594 026.31		R186	-35 061.64	3	593 377.54	
L187	-36 130.18	3	593 893.30		R187	-35 034.10	3	593 388.21	
L188	-36 077.61	3	593 831.78		R188	-34 923.63	3	593 431.01	
L189	-36 030.03	3	593 766.58		R189	-34 906.38	3	593 437.81	
L190	-36 024.72	3	593 760.36		R190	-34 820.22	3	593 474.79	
L191	-35 969.04	3	593 695.11		R191	-34 684.61	3	593 535.18	
L192	-35 914.73	3	593 635.10		R192	-34 593.93	3	593 561.53	
L193	-35 850.20	3	593 586.37		R193	-34 587.79	3	593 543.50	
L194	-35 791.60	3	593 553.51		R194	-34 520.19	3	593 567.19	
L195	-35 715.55	3	593 497.72		R195	-34 439.55	3	593 569.39	
L196	-35 642.83	3	593 462.76		R196	-34 373.06	3	593 563.67	
L197	-35 573.64	3	593 439.31		R197	-34 294.78	3	593 548.04	
L198	-35 487.56	3	593 417.88		R198	-34 255.03	3	593 534.84	
L199	-35 408.03	3	593 403.44		R199	-34 204.37	3	593 512.51	
L200	-35 325.97	3	593 391.57		R200	-34 155.44	3	593 485.08	
L201	-35 299.88	3	593 406.46		R201	-34 098.20	3	593 445.38	
L202	-35 286.48	3	593 407.30		R202	-34 056.54	3	593 408.54	
L203	-35 285.13	3	593 394.58		R203	-34 018.45	3	593 367.91	
L204	-35 235.29	3	593 398.33		R204	-33 975.66	3	593 313.28	
Vel Sheet 14					Van of 20		P953/17		



PADRESERWE KOÖRDINATE / ROAD RESERVE CO-ORDINATES									
LINKERKANT/LEFT HAND SIDE					REGTERKANT/RIGHT HAND SIDE				
	Y		X	WG 27°		Y		X	
L205	-35 205.47	3	593	401.13	R205	-33 946.79	3	593	265.37
L206	-35 195.56	3	593	402.06	R206	-33 759.94	3	592	890.28
L207	-35 073.97	3	593	415.22	R207	-33 731.34	3	592	845.82
L208	-35 051.71	3	593	421.51	R208	-33 700.80	3	592	799.43
L209	-34 983.63	3	593	440.77	R209	-33 666.39	3	592	755.52
L210	-34 926.43	3	593	462.96	R210	-33 629.63	3	592	713.56
L211	-34 855.43	3	593	500.68	R211	-33 580.63	3	592	664.04
L212	-34 813.52	3	593	517.29	R212	-33 519.21	3	592	612.46
L213	-34 794.17	3	593	524.96	R213	-33 515.98	3	592	610.36
L214	-34 763.33	3	593	545.43	R214	-33 448.37	3	592	559.88
L215	-34 742.20	3	593	559.46	R215	-33 233.40	3	592	432.73
L216	-34 664.26	3	593	589.46	R216	-33 078.24	3	592	343.09
L217	-34 623.79	3	593	598.08	R217	-32 988.24	3	592	298.44
L218	-34 546.53	3	593	610.66	R218	-32 850.38	3	592	229.54
L219	-34 465.74	3	593	614.86	R219	-32 662.11	3	592	126.00
L220	-34 392.65	3	593	605.14	R220	-32 579.02	3	592	080.36
L221	-34 356.74	3	593	597.54	R221	-32 504.58	3	592	039.47
L222	-34 246.59	3	593	574.23	R222	-32 345.87	3	591	952.55
L223	-34 107.03	3	593	501.50	R223	-32 190.62	3	591	867.81
L224	-33 996.55	3	593	407.11	R224	-32 040.88	3	591	786.01
L225	-33 916.68	3	593	299.21	R225	-31 882.93	3	591	700.23
L226	-33 744.88	3	592	944.89	R226	-31 879.59	3	591	698.30
L227	-33 742.74	3	592	941.65	R227	-31 816.58	3	591	661.38
L228	-33 667.33	3	592	812.71	R228	-31 679.33	3	591	581.73
L229	-33 519.39	3	592	653.91	R229	-31 559.11	3	591	525.14
L230	-33 496.65	3	592	655.08	R230	-31 391.80	3	591	402.80
L231	-33 491.94	3	592	650.43	R231	-31 308.83	3	591	320.13
L232	-33 486.97	3	592	629.63	R232	-31 274.85	3	591	276.22
L233	-33 325.13	3	592	533.72	R233	-31 213.61	3	591	184.06
L234	-33 169.75	3	592	442.09	R234	-31 178.94	3	591	121.27
L235	-33 072.23	3	592	396.97	R235	-31 153.29	3	591	056.91
L236	-33 001.27	3	592	357.82	R236	-31 039.83	3	590	717.92
L237	-32 932.95	3	592	313.88	R237	-30 982.35	3	590	547.55
L238	-32 732.16	3	592	204.58	R238	-30 869.36	3	590	211.07
L239	-32 612.09	3	592	217.26	R239	-30 813.80	3	590	044.48
L240	-32 556.87	3	592	108.21	R240	-30 823.73	3	590	031.69
L241	-32 555.41	3	592	107.43	R241	-30 802.63	3	589	983.73
L242	-32 464.82	3	592	058.22	R242	-30 791.82	3	589	976.96
L243	-32 297.98	3	591	967.22	R243	-30 782.48	3	589	950.81
L244	-32 142.14	3	591	882.38	R244	-30 764.24	3	589	902.47
L245	-31 985.28	3	591	796.70	R245	-30 747.80	3	589	859.68
L246	-31 828.77	3	591	711.34	R246	-30 719.45	3	589	811.85
L247	-31 669.99	3	591	623.00	R247	-30 683.24	3	589	752.40
L248	-31 516.02	3	591	541.14	R248	-30 670.58	3	589	737.61
L249	-31 408.45	3	591	461.38	R249	-30 644.45	3	589	705.17
L250	-31 348.97	3	591	405.36	R250	-30 589.86	3	589	645.24
L251	-31 346.11	3	591	402.74	R251	-30 528.18	3	589	593.31
L252	-31 287.25	3	591	345.39	R252	-30 516.32	3	589	585.62
L253	-31 244.99	3	591	293.80	R253	-30 457.53	3	589	548.28
L254	-31 194.31	3	591	214.99	R254	-30 381.74	3	589	507.38
L255	-31 135.45	3	591	100.32	R255	-30 375.88	3	589	505.18
Vel Sheet 15					Van of 20				
					P953/17				



PADRESERWE KOÖRDINATE / ROAD RESERVE CO-ORDINATES						
LINKERKANT/LEFT HAND SIDE				REGTERKANT/RIGHT HAND SIDE		
	Y	X	WG 27°		Y	X
L256	-31 077.39	3 590 926.48		R256	-30 363.16	3 589 498.51
L257	-31 032.90	3 590 829.58		R257	-30 309.80	3 589 474.58
L258	-30 986.97	3 590 660.75		R258	-30 299.68	3 589 477.19
L259	-30 874.01	3 590 325.42		R259	-29 424.34	3 589 185.37
L260	-30 816.18	3 590 153.35		R260	-29 343.83	3 589 163.04
L261	-30 806.56	3 590 148.86		R261	-29 271.21	3 589 146.81
L262	-30 804.18	3 590 142.62		R262	-29 188.47	3 589 134.09
L263	-30 809.46	3 590 133.53		R263	-29 105.28	3 589 126.97
L264	-30 748.93	3 589 956.24		R264	-29 021.97	3 589 124.89
L265	-30 738.19	3 589 933.31		R265	-28 924.65	3 589 127.73
L266	-30 694.55	3 589 840.14		R266	-28 827.14	3 589 130.97
L267	-30 652.55	3 589 771.23		R267	-28 693.74	3 589 165.48
L268	-30 602.21	3 589 707.68		R268	-28 640.21	3 589 179.93
L269	-30 544.28	3 589 651.12		R269	-28 594.60	3 589 194.51
L270	-30 480.58	3 589 601.61		R270	-28 574.01	3 589 199.92
L271	-30 411.55	3 589 559.35		R271	-28 434.54	3 589 250.13
L272	-30 338.64	3 589 524.47		R272	-28 415.22	3 589 257.70
L273	-30 286.16	3 589 505.56		R273	-28 295.91	3 589 304.49
L274	-30 269.53	3 589 499.97		R274	-28 170.07	3 589 353.96
L275	-30 161.11	3 589 464.59		R275	-28 132.14	3 589 369.93
L276	-29 893.39	3 589 375.13		R276	-27 998.88	3 589 408.15
L277	-29 614.32	3 589 281.96		R277	-27 913.25	3 589 416.21
L278	-29 401.74	3 589 212.24		R278	-27 840.84	3 589 415.25
L279	-29 293.87	3 589 185.01		R279	-27 783.26	3 589 408.60
L280	-29 207.39	3 589 169.04		R280	-27 730.62	3 589 398.56
L281	-29 203.52	3 589 168.55		R281	-27 676.99	3 589 384.21
L282	-29 115.14	3 589 160.02		R282	-27 638.12	3 589 369.52
L283	-29 045.82	3 589 156.70		R283	-27 586.32	3 589 349.23
L284	-28 976.11	3 589 157.22		R284	-27 536.89	3 589 323.72
L285	-28 890.15	3 589 163.24		R285	-27 489.90	3 589 293.98
L286	-28 765.86	3 589 181.71		R286	-27 456.14	3 589 270.22
L287	-28 549.45	3 589 248.80		R287	-27 390.83	3 589 217.08
L288	-28 440.17	3 589 293.34		R288	-27 315.71	3 589 154.76
L289	-28 364.51	3 589 321.69		R289	-27 216.70	3 589 075.53
L290	-28 306.39	3 589 350.75		R290	-27 220.77	3 589 070.53
L291	-28 194.27	3 589 389.88		R291	-27 204.93	3 589 064.99
L292	-28 187.06	3 589 406.35		R292	-27 194.88	3 589 048.48
L293	-28 157.97	3 589 418.10		R293	-27 111.81	3 588 978.36
L294	-28 135.38	3 589 408.26		R294	-27 044.57	3 588 933.18
L295	-28 095.85	3 589 423.26		R295	-27 039.26	3 588 928.99
L296	-28 016.83	3 589 439.79		R296	-26 995.61	3 588 889.30
L297	-27 936.60	3 589 449.26		R297	-26 985.60	3 588 880.20
L298	-27 855.88	3 589 449.61		R298	-26 980.69	3 588 863.44
L299	-27 775.63	3 589 441.69		R299	-26 932.09	3 588 840.66
L300	-27 696.31	3 589 424.78		R300	-26 910.49	3 588 819.62
L301	-27 619.60	3 589 399.94		R301	-26 803.69	3 588 730.35
L302	-27 545.53	3 589 367.20		R302	-26 791.56	3 588 717.96
L303	-27 475.33	3 589 326.37		R303	-26 777.28	3 588 707.41
L304	-27 409.53	3 589 279.41		R304	-26 773.06	3 588 704.08
L305	-27 347.68	3 589 225.17		R305	-26 768.24	3 588 700.28
L306	-27 278.76	3 589 249.04		R306	-26 737.48	3 588 676.04
				Vel Sheet	16 Van of 20	P953/17



PADRESERWE KOÖRDINATE / ROAD RESERVE CO-ORDINATES									
LINKERKANT/LEFT HAND SIDE					REGTERKANT/RIGHT HAND SIDE				
	Y		X	WG 27°		Y		X	
L307	-27 257.48	3	589	247.56	R307	-26 727.92	3	588	668.50
L308	-27 213.09	3	589	149.95	R308	-26 719.60	3	588	654.70
L309	-27 227.71	3	589	145.01	R309	-26 620.26	3	588	592.97
L310	-27 225.36	3	589	121.32	R310	-26 572.33	3	588	568.59
L311	-27 216.64	3	589	113.92	R311	-26 521.44	3	588	550.51
L312	-27 184.62	3	589	090.14	R312	-26 443.56	3	588	528.67
L313	-27 180.61	3	589	086.75	R313	-26 388.27	3	588	499.71
L314	-27 100.56	3	589	026.96	R314	-26 270.08	3	588	475.56
L315	-27 060.42	3	588	991.09	R315	-25 803.30	3	588	331.99
L316	-26 937.62	3	588	886.81	R316	-25 653.49	3	588	285.92
L317	-26 905.21	3	588	859.30	R317	-25 485.91	3	588	234.27
L318	-26 863.65	3	588	824.38	R318	-25 310.10	3	588	180.51
L319	-26 784.61	3	588	759.33	R319	-25 138.01	3	588	127.21
L320	-26 751.49	3	588	732.05	R320	-25 061.93	3	588	099.21
L321	-26 743.68	3	588	725.69	R321	-24 940.76	3	588	066.79
L322	-26 716.27	3	588	703.34	R322	-24 827.50	3	588	032.21
L323	-26 707.32	3	588	696.05	R323	-24 771.66	3	588	015.17
L324	-26 659.44	3	588	659.04	R324	-24 752.23	3	588	008.82
L325	-26 656.41	3	588	656.69	R325	-24 675.86	3	587	985.53
L326	-26 633.31	3	588	638.47	R326	-24 507.96	3	587	934.82
L327	-26 566.09	3	588	606.41	R327	-24 377.79	3	587	900.05
L328	-26 506.54	3	588	583.74	R328	-24 232.58	3	587	869.65
L329	-26 414.76	3	588	555.85	R329	-24 086.34	3	587	844.87
L330	-26 374.69	3	588	549.42	R330	-23 996.98	3	587	834.63
L331	-26 355.58	3	588	544.52	R331	-23 872.62	3	587	820.17
L332	-26 281.11	3	588	514.58	R332	-23 832.47	3	587	812.24
L333	-25 825.81	3	588	374.63	R333	-23 801.63	3	587	806.83
L334	-25 772.28	3	588	359.04	R334	-23 680.77	3	587	798.80
L335	-25 651.00	3	588	320.97	R335	-23 576.25	3	587	787.03
L336	-25 477.06	3	588	267.57	R336	-23 399.52	3	587	766.78
L337	-25 134.58	3	588	162.11	R337	-23 344.90	3	587	755.96
L338	-24 946.31	3	588	105.05	R338	-23 273.42	3	587	722.12
L339	-24 839.15	3	588	071.49	R339	-23 248.32	3	587	712.84
L340	-24 793.19	3	588	057.10	R340	-23 202.69	3	587	684.34
L341	-24 686.51	3	588	024.24	R341	-23 156.77	3	587	648.19
L342	-24 515.00	3	587	971.55	R342	-23 027.76	3	587	483.38
L343	-24 444.43	3	587	954.10	R343	-22 976.23	3	587	416.78
L344	-24 300.57	3	587	918.95	R344	-22 932.91	3	587	360.80
L345	-24 155.13	3	587	891.16	R345	-22 888.14	3	587	314.18
L346	-24 008.78	3	587	870.39	R346	-22 823.30	3	587	257.15
L347	-23 808.39	3	587	847.93	R347	-22 598.76	3	587	100.49
L348	-23 701.87	3	587	835.26	R348	-22 454.87	3	586	997.60
L349	-23 627.75	3	587	830.58	R349	-22 332.93	3	586	910.65
L350	-23 434.67	3	587	806.82	R350	-22 186.57	3	586	807.54
L351	-23 381.49	3	587	799.19	R351	-22 020.54	3	586	690.59
L352	-23 263.13	3	587	773.72	R352	-21 898.82	3	586	615.27
L353	-23 244.68	3	587	765.77	R353	-21 743.49	3	586	526.84
L354	-23 159.18	3	587	698.07	R354	-21 608.44	3	586	461.07
L355	-23 105.86	3	587	649.04	R355	-21 442.20	3	586	388.10
L356	-23 070.22	3	587	608.82	R356	-21 430.48	3	586	368.30
L357	-23 038.02	3	587	565.52	R357	-21 375.07	3	586	351.73



PADRESERWE KOÖRDINATE / ROAD RESERVE CO-ORDINATES									
LINKERKANT/LEFT HAND SIDE					REGTERKANT/RIGHT HAND SIDE				
	Y		X	WG 27°		Y		X	
L358	-22 932.87	3	587	424.04	R358	-21 326.59	3	586	350.61
L359	-22 907.65	3	587	395.14	R359	-21 172.66	3	586	303.63
L360	-22 880.80	3	587	364.36	R360	-21 003.71	3	586	260.45
L361	-22 862.99	3	587	347.72	R361	-20 825.66	3	586	215.54
L362	-22 820.25	3	587	307.80	R362	-20 717.66	3	586	188.23
L363	-22 758.69	3	587	255.03	R363	-20 578.19	3	586	135.68
L364	-22 627.65	3	587	158.78	R364	-20 509.66	3	586	096.66
L365	-22 417.05	3	587	010.48	R365	-20 445.12	3	586	047.88
L366	-22 397.13	3	587	023.12	R366	-20 384.35	3	585	994.85
L367	-22 390.89	3	587	019.56	R367	-20 354.44	3	585	961.96
L368	-22 392.46	3	586	994.42	R368	-20 329.98	3	585	935.07
L369	-22 311.39	3	586	941.17	R369	-20 281.23	3	585	870.47
L370	-22 217.32	3	586	869.92	R370	-20 239.88	3	585	800.74
L371	-22 095.62	3	586	784.91	R371	-20 204.98	3	585	727.30
L372	-21 948.10	3	586	689.36	R372	-20 179.83	3	585	650.12
L373	-21 845.85	3	586	624.28	R373	-20 112.20	3	585	403.16
L374	-21 716.04	3	586	549.93	R374	-20 089.86	3	585	314.71
L375	-21 445.37	3	586	429.87	R375	-20 008.96	3	585	018.50
L376	-21 392.93	3	586	417.05	R376	-19 961.93	3	584	845.89
L377	-21 371.41	3	586	408.18	R377	-19 934.05	3	584	755.50
L378	-21 322.55	3	586	385.41	R378	-19 902.73	3	584	633.83
L379	-21 143.14	3	586	326.61	R379	-19 859.40	3	584	478.61
L380	-20 996.28	3	586	292.84	R380	-19 851.78	3	584	444.00
L381	-20 728.92	3	586	228.67	R381	-19 815.77	3	584	311.60
L382	-20 576.43	3	586	174.52	R382	-19 808.70	3	584	301.66
L383	-20 505.57	3	586	135.96	R383	-19 801.53	3	584	273.56
L384	-20 438.69	3	586	090.96	R384	-19 805.64	3	584	266.06
L385	-20 376.71	3	586	038.89	R385	-19 764.10	3	584	145.34
L386	-20 324.29	3	585	985.55	R386	-19 750.44	3	584	111.05
L387	-20 319.66	3	585	980.84	R387	-19 712.09	3	584	039.56
L388	-20 309.35	3	585	988.65	R388	-19 668.13	3	583	971.68
L389	-20 285.01	3	585	978.25	R389	-19 615.00	3	583	911.33
L390	-20 231.01	3	585	917.99	R390	-19 554.06	3	583	855.73
L391	-20 220.13	3	585	893.38	R391	-19 510.62	3	583	821.55
L392	-20 219.94	3	585	875.63	R392	-19 453.59	3	583	783.11
L393	-20 196.79	3	585	871.55	R393	-19 158.86	3	583	627.45
L394	-20 210.83	3	585	824.20	R394	-19 000.60	3	583	544.46
L395	-20 184.30	3	585	776.68	R395	-18 849.40	3	583	464.87
L396	-20 157.72	3	585	700.16	R396	-18 779.82	3	583	424.90
L397	-20 129.58	3	585	594.89	R397	-18 715.62	3	583	376.60
L398	-20 054.74	3	585	318.59	R398	-18 653.51	3	583	324.85
L399	-19 905.84	3	584	767.17	R399	-18 596.81	3	583	267.05
L400	-19 838.04	3	584	515.68	R400	-18 545.63	3	583	204.05
L401	-19 790.78	3	584	333.54	R401	-18 465.15	3	583	093.31
L402	-19 781.79	3	584	306.76	R402	-18 468.66	3	583	086.62
L403	-19 765.35	3	584	246.20	R403	-18 465.02	3	583	080.87
L404	-19 757.70	3	584	243.31	R404	-18 456.41	3	583	081.33
L405	-19 755.28	3	584	237.13	R405	-18 240.87	3	582	786.10
L406	-19 761.02	3	584	231.42	R406	-17 976.85	3	582	422.07
L407	-19 727.59	3	584	155.88	R407	-17 926.86	3	582	359.07
L408	-19 693.85	3	584	082.36	R408	-17 880.21	3	582	294.69
Vel Sheet 18					Van of 20		P953/17		



PADRESERWE KOÖRDINATE / ROAD RESERVE CO-ORDINATES										
LINKERKANT/LEFT HAND SIDE						REGTERKANT/RIGHT HAND SIDE				
	Y		X	WG 27°			Y		X	
L409	-19 603.16	3	583 948.31			R409	-17 883.58	3	582 287.18	
L410	-19 576.64	3	583 921.46			R410	-17 879.47	3	582 281.89	
L411	-19 548.02	3	583 892.93			R411	-17 870.49	3	582 282.17	
L412	-19 483.56	3	583 844.70			R412	-17 555.44	3	581 848.13	
L413	-19 403.94	3	583 795.00			R413	-17 545.88	3	581 835.83	
L414	-18 915.10	3	583 538.13			R414	-17 471.96	3	581 734.56	
L415	-18 842.96	3	583 501.39			R415	-17 365.59	3	581 587.89	
L416	-18 772.64	3	583 461.34			R416	-17 347.67	3	581 563.14	
L417	-18 705.69	3	583 416.11			R417	-17 338.95	3	581 551.10	
L418	-18 644.46	3	583 363.38			R418	-17 282.65	3	581 475.72	
L419	-18 584.64	3	583 308.77			R419	-17 279.98	3	581 423.59	
L420	-18 530.00	3	583 248.98			R420	-17 214.59	3	581 327.08	
L421	-18 436.44	3	583 115.25			R421	-17 163.01	3	581 309.11	
L422	-18 431.61	3	583 113.41			R422	-16 915.88	3	580 969.42	
L423	-18 427.57	3	583 108.03			R423	-16 874.09	3	580 912.10	
L424	-18 427.06	3	583 102.36			R424	-16 811.19	3	580 825.72	
L425	-18 425.76	3	583 098.02			R425	-16 703.60	3	580 677.43	
L426	-18 231.46	3	582 830.98			R426	-16 590.71	3	580 521.35	
L427	-18 222.93	3	582 832.14			R427	-16 512.67	3	580 414.56	
L428	-18 219.15	3	582 826.72			R428	-16 493.08	3	580 387.77	
L429	-18 222.83	3	582 819.13			R429	-16 483.80	3	580 374.89	
L430	-17 866.63	3	582 329.61			R430	-16 447.74	3	580 326.77	
L431	-17 858.74	3	582 332.23			R431	-16 391.79	3	580 252.24	
L432	-17 854.50	3	582 327.15			R432	-16 373.74	3	580 230.29	
L433	-17 860.52	3	582 321.21			R433	-16 364.02	3	580 218.48	
L434	-17 542.24	3	581 883.78			R434	-16 320.49	3	580 171.83	
L435	-17 527.80	3	581 863.95			R435	-16 282.30	3	580 130.89	
L436	-17 519.90	3	581 865.47			R436	-16 248.63	3	580 089.44	
L437	-17 516.38	3	581 859.81			R437	-16 131.89	3	579 945.75	
L438	-17 519.61	3	581 852.69			R438	-16 000.00	3	579 809.16	
L439	-17 433.14	3	581 738.25			R439	-15 891.12	3	579 683.54	
L440	-17 338.90	3	581 609.43			R440	-15 882.95	3	579 674.12	
L441	-17 234.53	3	581 466.24			R441	-15 865.13	3	579 653.74	
L442	-17 225.34	3	581 467.11			R442	-15 765.70	3	579 540.09	
L443	-17 213.11	3	581 450.57			R443	-15 619.07	3	579 371.83	
L444	-17 222.10	3	581 449.05			R444	-15 531.32	3	579 262.86	
L445	-17 098.59	3	581 275.70			R445	-15 454.26	3	579 146.20	
L446	-16 993.19	3	581 129.49			R446	-15 384.36	3	579 013.99	
L447	-16 889.74	3	580 987.23			R447	-15 331.42	3	578 884.18	
L448	-16 779.99	3	580 844.26			R448	-15 300.42	3	578 783.44	
L449	-16 674.06	3	580 698.50			R449	-15 230.14	3	578 523.02	
L450	-16 572.98	3	580 551.54			R450	-15 236.74	3	578 516.57	
L451	-16 550.37	3	580 520.72			R451	-15 235.08	3	578 509.71	
L452	-16 466.16	3	580 405.28			R452	-15 226.47	3	578 509.00	
L453	-16 464.08	3	580 403.09			R453	-15 048.51	3	577 838.87	
L454	-16 456.57	3	580 392.86			R454	-15 070.64	3	577 818.24	
L455	-16 396.34	3	580 319.31			R455	-15 044.93	3	577 723.15	
L456	-16 365.56	3	580 284.31			R456	-15 010.98	3	577 698.80	
L457	-16 340.79	3	580 256.14			R457	-14 966.67	3	577 531.06	
L458	-16 301.63	3	580 211.61			R458	-14 942.90	3	577 437.03	
L459	-16 283.60	3	580 188.28			R459	-14 926.83	3	577 384.94	
						<div> <div>Vel</div> <div>19</div> <div>Van</div> <div>20</div> <div>Sheet</div> <div>of</div> <div>P953/17</div> </div>				



PADRESERWE KOÖRDINATE / ROAD RESERVE CO-ORDINATES									
LINKERKANT/LEFT HAND SIDE					REGTERKANT/RIGHT HAND SIDE				
	Y		X	WG 27°		Y		X	
L460	-16 246.42	3	580	140.18	R460	-14 926.15	3	577	382.70
L461	-16 099.58	3	579	977.53	R461	-14 894.48	3	577	263.61
L462	-16 003.95	3	579	862.06	R462	-14 902.37	3	577	256.59
L463	-15 920.33	3	579	772.53	R463	-14 900.70	3	577	250.19
L464	-15 894.90	3	579	745.30	R464	-14 890.31	3	577	247.91
L465	-15 828.46	3	579	665.06	R465	-14 845.27	3	577	094.98
L466	-15 759.99	3	579	582.38	R466	-14 783.73	3	576	954.09
L467	-15 752.24	3	579	584.55	R467	-14 715.49	3	576	828.82
L468	-15 747.49	3	579	579.65	R468	-14 635.44	3	576	710.59
L469	-15 749.75	3	579	570.51	R469	-14 545.35	3	576	600.21
L470	-15 545.23	3	579	335.26	R470	-14 444.17	3	576	499.70
L471	-15 462.89	3	579	222.62	R471	-14 169.61	3	576	269.54
L472	-15 391.34	3	579	102.35	R472	-13 894.52	3	576	038.91
L473	-15 331.20	3	578	976.40	R473	-13 588.47	3	575	783.52
L474	-15 283.11	3	578	844.99	R474	-13 566.54	3	575	764.53
L475	-15 199.80	3	578	531.77	R475	-13 514.29	3	575	712.07
L476	-15 190.67	3	578	529.11	R476	-13 506.43	3	575	702.92
L477	-15 188.87	3	578	522.39	R477	-13 497.37	3	575	692.38
L478	-15 195.61	3	578	516.57	R478	-13 474.14	3	575	665.35
L479	-15 017.76	3	577	847.37	R479	-13 460.66	3	575	646.37
L480	-14 995.54	3	577	839.33	R480	-13 404.74	3	575	554.29
L481	-14 988.34	3	577	828.12	R481	-13 360.08	3	575	447.17
L482	-15 005.60	3	577	801.75	R482	-13 351.95	3	575	413.65
L483	-14 937.61	3	577	544.69	R483	-13 335.95	3	575	350.97
L484	-14 928.49	3	577	542.52	R484	-13 328.61	3	575	307.48
L485	-14 926.90	3	577	535.74	R485	-13 319.32	3	575	202.24
L486	-14 933.60	3	577	530.01	LINKERKANT/LEFT HAND SIDE				
L487	-14 909.85	3	577	437.09	L511	-13 334.95	3	575	473.25
L488	-14 890.56	3	577	395.01	L512	-13 311.98	3	575	386.10
L489	-14 887.44	3	577	388.10	L513	-13 307.84	3	575	357.11
L490	-14 864.95	3	577	270.40	L514	-13 291.65	3	575	287.17
L491	-14 843.22	3	577	262.96	L515	-13 287.41	3	575	228.73
L492	-14 841.61	3	577	250.10	L516	-13 285.27	3	575	199.27
L493	-14 854.84	3	577	233.78					
L494	-14 839.71	3	577	180.54					
L495	-14 790.82	3	577	045.76					
L496	-14 729.47	3	576	917.31					
L497	-14 655.73	3	576	794.94					
L498	-14 570.80	3	576	680.11					
L499	-14 475.47	3	576	573.99					
L500	-14 250.83	3	576	378.39					
L501	-14 242.81	3	576	381.64					
L502	-14 237.69	3	576	377.38					
L503	-14 239.43	3	576	368.74					
L504	-14 096.27	3	576	249.16					
L505	-13 803.40	3	576	003.75					
L506	-13 562.18	3	575	801.82					
L507	-13 461.74	3	575	703.49					
L508	-13 438.40	3	575	666.84					
L509	-13 395.26	3	575	599.11					
L510	-13 373.21	3	575	561.24					
					Vel 20 Van 20 of P953/17 Sheet				