

DEPARTMENT OF TRANSPORT

NO. 352

24 MARCH 2016

**THE SOUTH AFRICAN NATIONAL ROADS
AGENCY SOC LIMITED**

Registration No: 1998/009584/30

DECLARATION AMENDMENT OF NATIONAL ROAD R21 SECTION 2

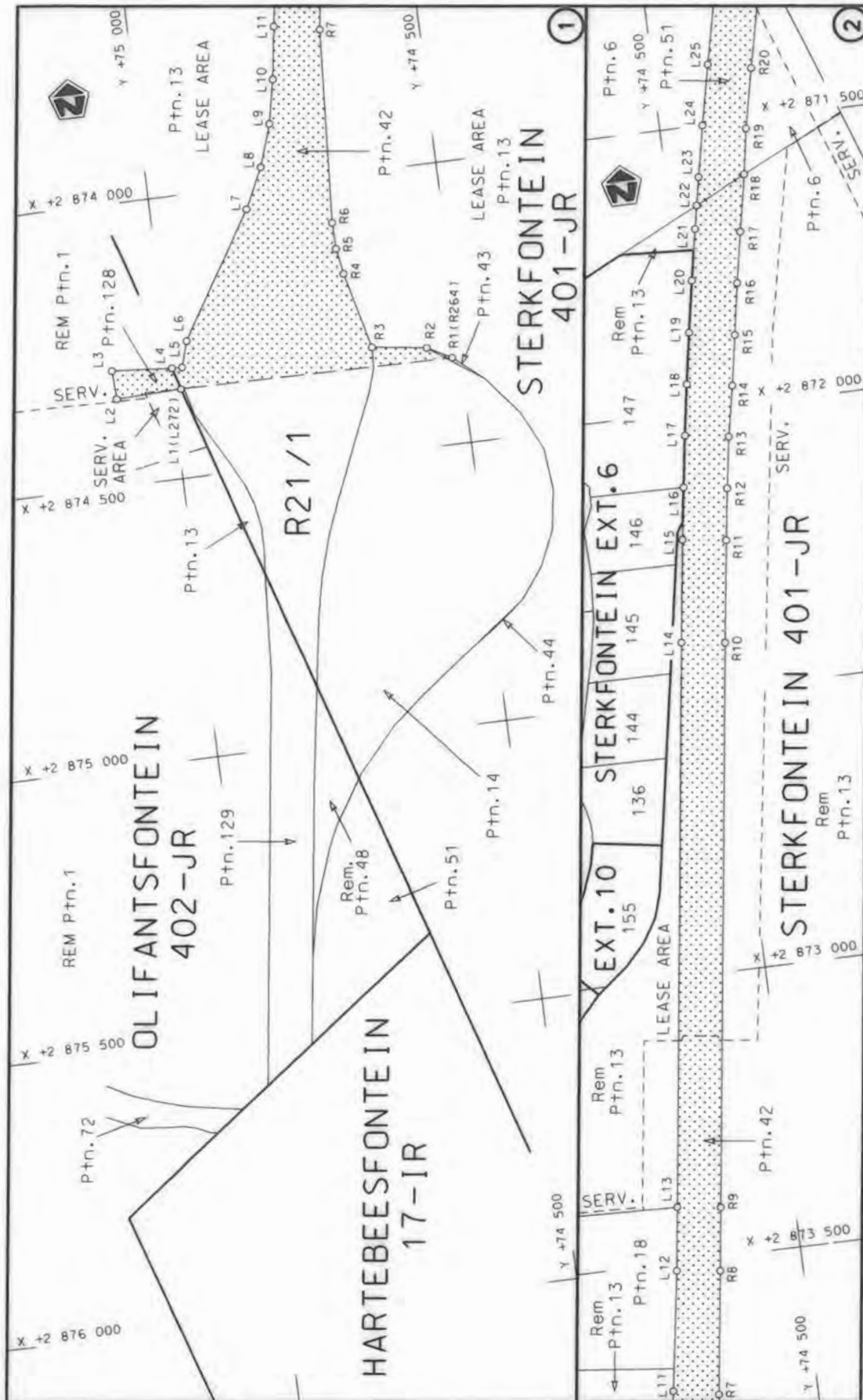
AMENDMENT OF DECLARATION No. 409 OF 2008

By virtue of Section 40 (1)(b) of The South African National Roads Agency Limited and National Roads Act, 1998 (Act No. 7 of 1998), I hereby amend Declaration No. 409 of 2008 by substituting the section from points L181 and R143 up to points L1 and R1 thereof, with the subjoined sheets 1 to 13 of Plan No. P827/14.

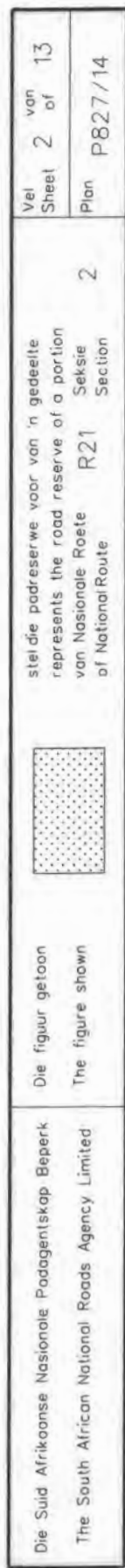
(National Road R21 Section 2: Olifantsfontein I/C – Hans Strydom Drive)

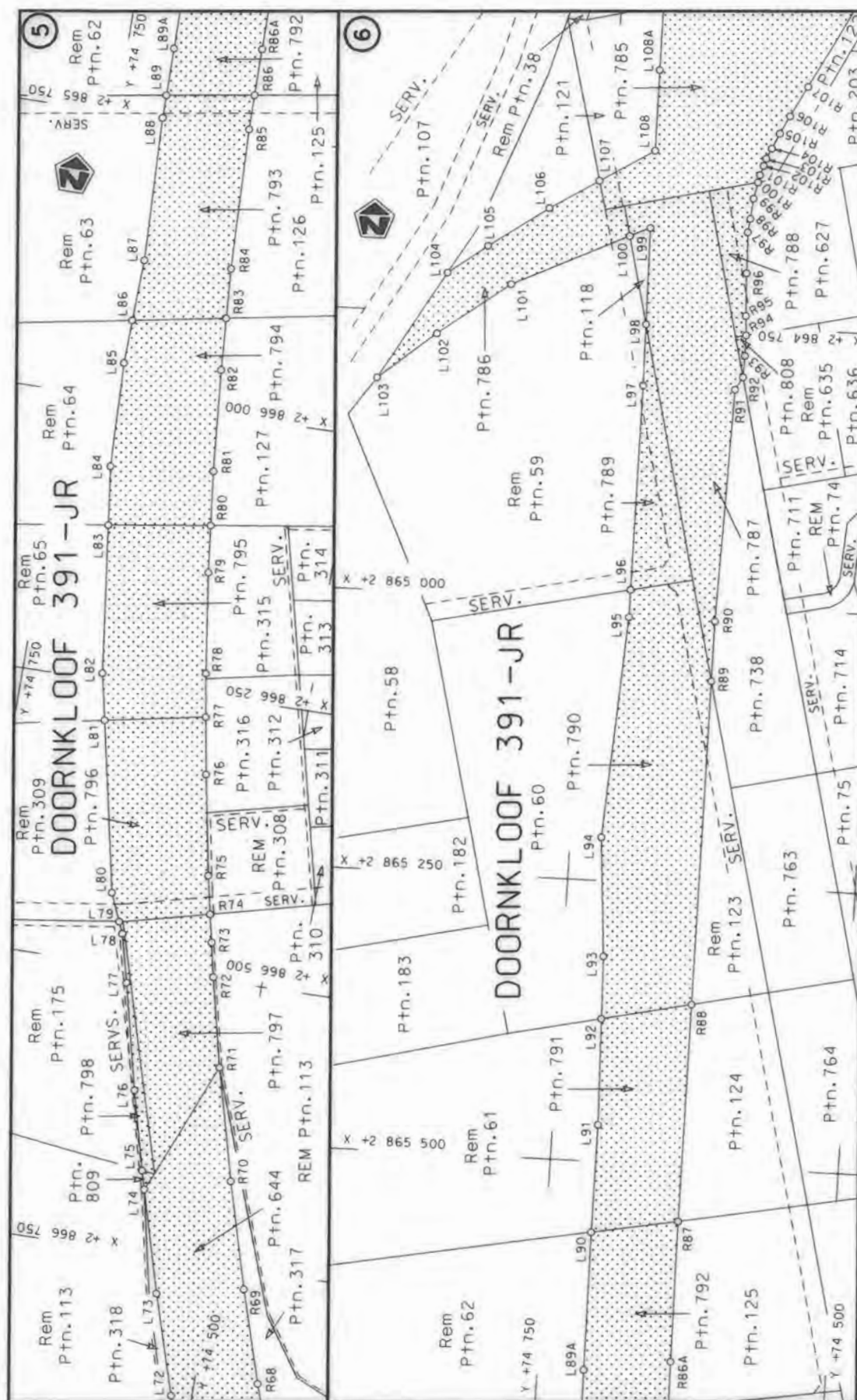


MINISTER OF TRANSPORT



Die Suid Afrikaanse Nasionale Padagentskap Beperk The South African National Roads Agency Limited	Die figuur getoon The figure shown		stel die padreserwe voor van 'n gedeelte represents the road reserve of a portion van Nasionale Roete of National Route	Val Sheet 1 of 13	2 R21 Section	Plan P827/14	2 R21 Section
--	---------------------------------------	--	--	-------------------------	---------------------	-----------------	---------------------





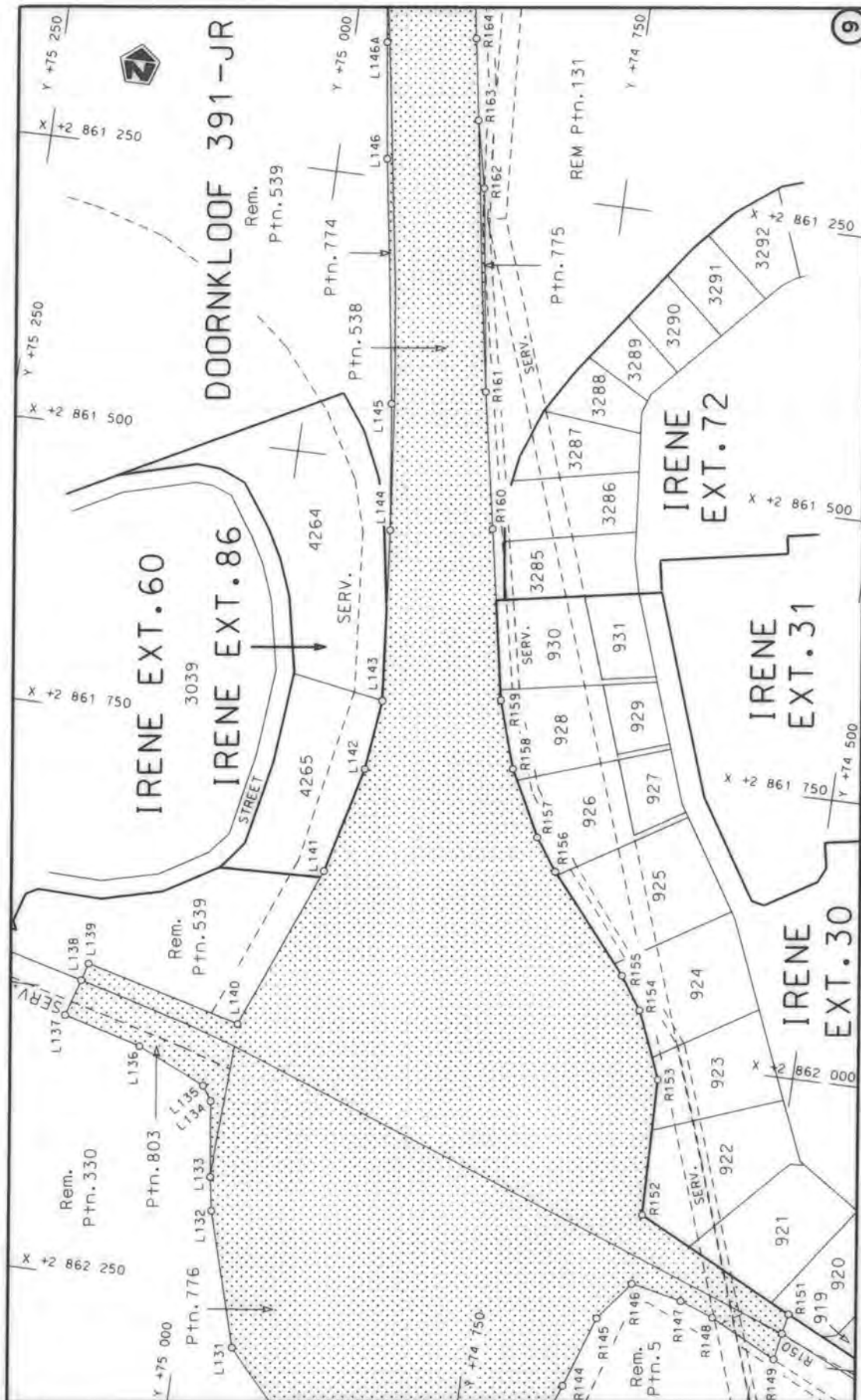
Die Suid Afrikaanse Nasionale Podogentskap Beperk
The South African National Roads Agency Limited

Die figuur getoon

steldie padreserwe voor van 'n gedeelte
represents the rood reserve of a portion
van Nasionale Roete R21 Seksie
of National Route Section

Vel
Sheet 3 von 13
Plan P827/14





Die Suid Afrikaanse Nasionale Padagentskap Beperk
The South African National Roads Agency Limited

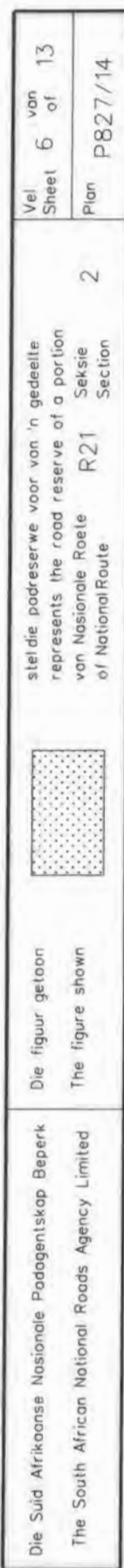
Die figuur getoon
The figure shown

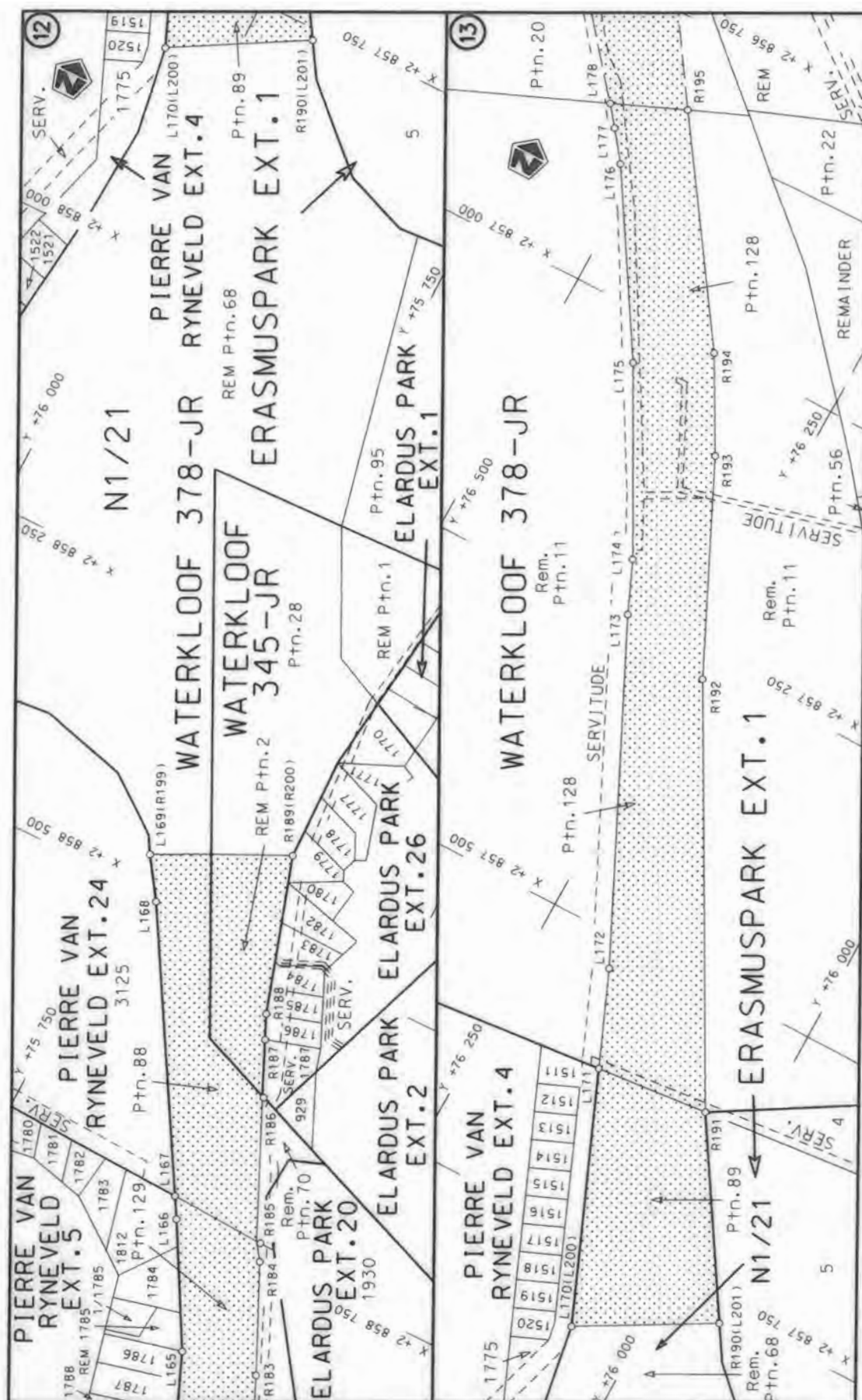



steldie padreserwe voor van 'n gedeelte
represents the road reserve of a portion
van Nasionale Roete R21
of National Route

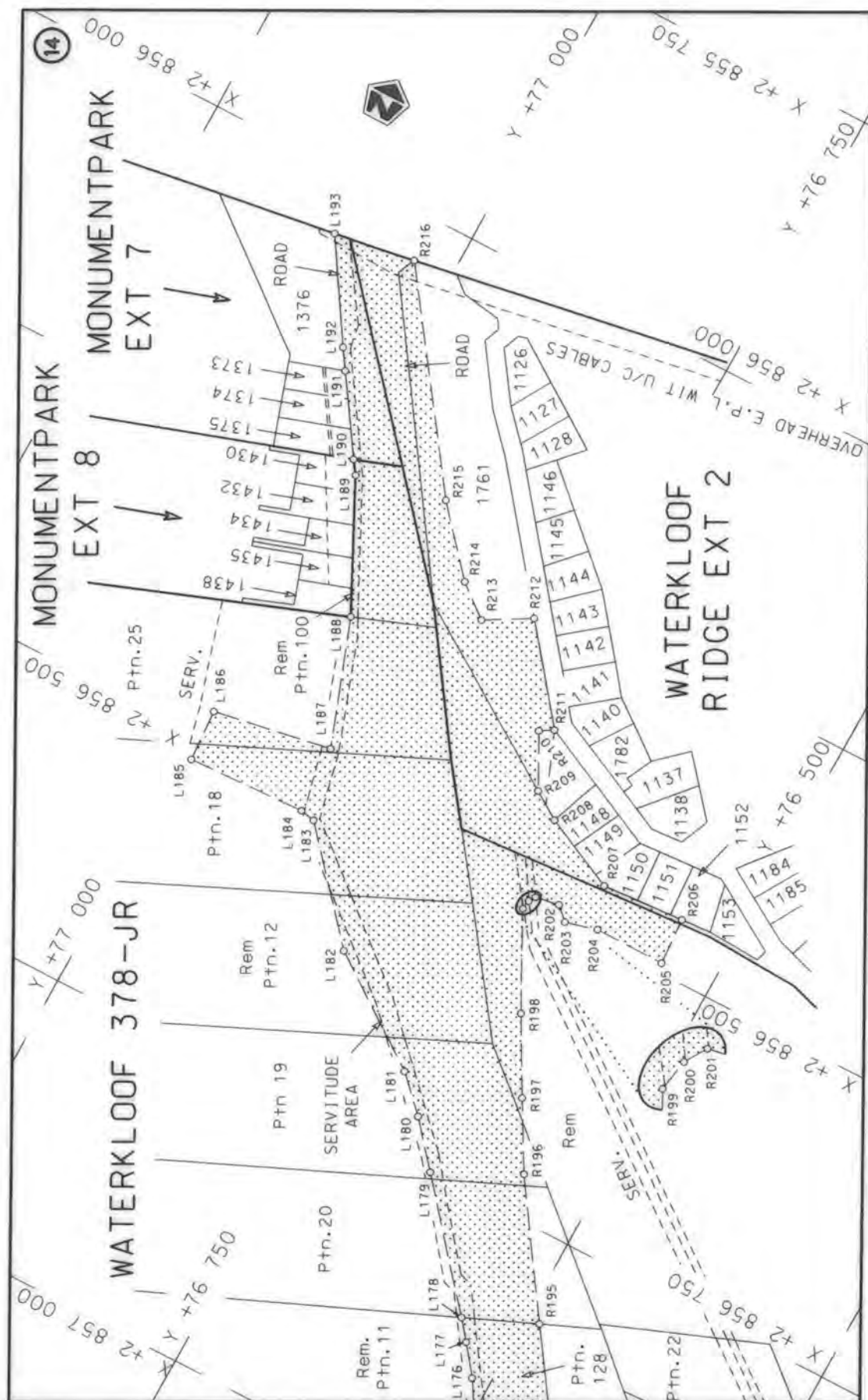
2

Vel
Sheet 5 of 13
Plan P827/14





Die Suid Afrikaanse Nasionale Podagentskap Bepark The South African National Roads Agency Limited	Die figuur getoon The figure shown		stel die padreserwe voor van 'n gedeelte represents the road reserve of a portion van Nasionale Roete R21 Seksie of National Route Section	Vel Sheet 7 of 13
			2	Plan P827/14



Die Suid Afrikaanse Nasionale Padagentskap Beperk The South African National Roads Agency Limited	Die figuur getoon The figure shown		stel die padreserwe voor van 'n gedeelte represents the road reserve of a portion van Nasionale Roete R21 of National Route	Vel Sheet	8 of	13
			2	Plan	P827/14	

PADRESERWE KOÖRDINATE / ROAD RESERVE CO-ORDINATES						
LINKERKANT/LEFT HAND SIDE				REGTERKANT/RIGHT HAND SIDE		
	Y	X	WG 29°		Y	X
L1	74 983.96	2 874 341.63		R1	74 513.78	2 874 346.46
L2	75 096.23	2 874 345.35		R2	74 555.13	2 874 323.67
L3	75 098.49	2 874 294.45		R3	74 648.85	2 874 310.04
L4	74 995.57	2 874 303.21		R4	74 681.50	2 874 175.08
L5	74 977.55	2 874 303.67		R5	74 689.11	2 874 129.34
L6	74 964.13	2 874 258.30		R6	74 690.00	2 874 082.99
L7	74 832.74	2 874 040.03		R7	74 670.25	2 873 741.37
L8	74 799.82	2 873 970.21		R8	74 641.59	2 873 524.47
L9	74 775.74	2 873 895.57		R9	74 627.37	2 873 412.55
L10	74 760.49	2 873 817.72		R10	74 498.45	2 872 416.68
L11	74 747.70	2 873 725.67		R11	74 474.50	2 872 235.67
L12	74 716.01	2 873 514.72		R12	74 461.51	2 872 143.85
L13	74 701.76	2 873 402.79		R13	74 448.02	2 872 053.68
L14	74 572.86	2 872 406.87		R14	74 430.83	2 871 964.11
L15	74 548.87	2 872 225.28		R15	74 415.23	2 871 874.88
L16	74 535.80	2 872 132.73		R16	74 400.28	2 871 784.58
L17	74 522.20	2 872 042.12		R17	74 384.01	2 871 694.84
L18	74 507.94	2 871 951.51		R18	74 365.40	2 871 595.55
L19	74 492.99	2 871 860.90		R19	74 352.20	2 871 515.20
L20	74 477.30	2 871 770.52		R20	74 330.48	2 871 409.89
L21	74 460.85	2 871 680.29		R21	74 289.84	2 871 223.16
L22	74 453.00	2 871 639.34		R22	74 225.48	2 870 930.90
L23	74 443.59	2 871 590.30		R23	74 131.35	2 870 503.52
L24	74 425.87	2 871 500.08		R24	74 001.88	2 869 915.37
L25	74 403.87	2 871 393.98		R25	73 963.79	2 869 735.61
L26	74 364.87	2 871 214.98		R26	73 945.91	2 869 637.48
L27	74 337.24	2 871 089.57		R27	73 914.22	2 869 610.30
L28	74 314.92	2 870 988.31		R28	73 775.47	2 869 590.02
L29	74 204.56	2 870 487.41		R29	73 723.56	2 869 583.45
L30	74 074.32	2 869 895.98		R30	73 727.62	2 869 564.45
L31	74 037.36	2 869 721.21		R31	73 731.55	2 869 546.03
L32	74 024.91	2 869 654.70		R32	73 780.57	2 869 552.58
L33	74 034.52	2 869 630.42		R33	73 919.69	2 869 569.81
L34	74 267.19	2 869 656.96		R34	73 929.39	2 869 546.62
L35	74 269.44	2 869 637.27		R35	73 925.12	2 869 516.12
L36	74 271.59	2 869 618.38		R36	73 915.85	2 869 424.32
L37	74 025.56	2 869 582.78		R37	73 904.33	2 869 332.53
L38	74 012.30	2 869 564.84		R38	73 897.12	2 869 240.49
L39	74 003.63	2 869 505.10		R39	73 893.99	2 869 145.53
L40	73 992.36	2 869 415.31		R40	73 889.42	2 869 055.87
L41	73 983.28	2 869 325.27		R41	73 888.17	2 868 966.44
L42	73 976.26	2 869 235.01		R42	73 888.07	2 868 958.91
L43	73 971.38	2 869 144.63		R43	73 890.33	2 868 871.12
L44	73 968.59	2 869 054.19		R44	73 894.12	2 868 778.81
L45	73 968.10	2 868 963.65		R45	73 900.01	2 868 686.63
L46	73 969.56	2 868 873.21		R46	73 902.39	2 868 659.73
L47	73 973.25	2 868 782.69		R47	73 908.07	2 868 594.65
L48	73 979.02	2 868 692.46		R48	73 918.35	2 868 502.84
L49	73 982.40	2 868 654.33		R49	73 920.45	2 868 503.13
L50	73 986.94	2 868 602.53		R50	73 932.87	2 868 411.62
L51	73 994.86	2 868 512.31		R51	73 949.14	2 868 310.96
				Vel Sheet	9 Van of 13	P827/14

PADRESERWE KOÖRDINATE / ROAD RESERVE CO-ORDINATES						
LINKERKANT/LEFT HAND SIDE				REGTERKANT/RIGHT HAND SIDE		
	Y	X	WG 29°		Y	X
L52	73 996.93	2 868 512.63		R52	73 964.11	2 868 229.48
L53	74 007.02	2 868 422.57		R53	73 982.84	2 868 139.02
L54	74 011.46	2 868 394.73		R54	74 003.75	2 868 049.20
L55	74 021.29	2 868 333.08		R55	74 026.60	2 867 959.76
L56	74 037.61	2 868 244.05		R56	74 052.12	2 867 871.18
L57	74 055.95	2 868 155.07		R57	74 067.69	2 867 820.65
L58	74 076.63	2 868 067.54		R58	74 079.39	2 867 783.02
L59	74 099.31	2 867 979.55		R59	74 108.65	2 867 695.39
L60	74 109.22	2 867 944.40		R60	74 140.08	2 867 608.63
L61	74 123.99	2 867 892.42		R61	74 179.42	2 867 506.99
L62	74 135.97	2 867 851.71		R62	74 253.17	2 867 334.45
L63	74 150.67	2 867 805.86		R63	74 283.55	2 867 264.69
L64	74 179.30	2 867 719.73		R64	74 311.40	2 867 200.76
L65	74 210.20	2 867 634.85		R65	74 355.29	2 867 095.91
L66	74 252.59	2 867 526.66		R66	74 384.81	2 867 020.82
L67	74 322.88	2 867 362.11		R67	74 415.89	2 866 936.14
L68	74 346.74	2 867 307.46		R68	74 445.78	2 866 848.41
L69	74 419.01	2 867 138.25		R69	74 471.20	2 866 767.42
L70	74 457.84	2 867 040.00		R70	74 498.09	2 866 674.45
L71	74 488.11	2 866 957.53		R71	74 523.99	2 866 576.15
L72	74 517.62	2 866 870.25		R72	74 542.23	2 866 497.59
L73	74 544.85	2 866 782.68		R73	74 548.69	2 866 467.28
L74	74 570.31	2 866 692.98		R74	74 554.05	2 866 442.68
L75	74 574.73	2 866 676.90		R75	74 561.22	2 866 408.82
L76	74 592.98	2 866 607.45		R76	74 577.76	2 866 319.76
L77	74 615.31	2 866 514.05		R77	74 586.21	2 866 269.08
L78	74 625.85	2 866 471.44		R78	74 592.50	2 866 230.44
L79	74 630.24	2 866 461.19		R79	74 605.06	2 866 140.90
L80	74 640.71	2 866 436.74		R80	74 609.84	2 866 099.19
L81	74 672.03	2 866 285.39		R81	74 615.36	2 866 051.01
L82	74 680.59	2 866 244.00		R82	74 623.64	2 865 960.91
L83	74 697.13	2 866 112.34		R83	74 626.74	2 865 914.91
L84	74 703.68	2 866 060.17		R84	74 629.65	2 865 870.66
L85	74 707.28	2 865 967.50		R85	74 634.39	2 865 746.09
L86	74 706.14	2 865 929.18		R86	74 634.65	2 865 715.48
L87	74 704.51	2 865 874.72		R87	74 635.90	2 865 549.43
L88	74 709.53	2 865 747.53		R88	74 635.90	2 865 356.30
L89	74 709.68	2 865 727.35		R89	74 635.97	2 865 066.65
L90	74 710.91	2 865 563.04		R90	74 635.91	2 865 012.91
L91	74 710.85	2 865 467.34		R91	74 630.66	2 864 805.48
L92	74 713.59	2 865 373.07		R92	74 624.43	2 864 794.16
L93	74 715.20	2 865 317.38		R93	74 623.99	2 864 775.04
L94	74 723.13	2 865 211.27		R94	74 624.06	2 864 756.83
L95	74 711.00	2 865 013.11		R95	74 625.28	2 864 739.52
L96	74 710.99	2 864 988.59		R96	74 626.87	2 864 701.57
L97	74 710.95	2 864 805.92		R97	74 628.01	2 864 665.21
L98	74 711.69	2 864 751.43		R98	74 626.46	2 864 653.10
L99	74 712.95	2 864 665.70		R99	74 624.72	2 864 635.14
L100	74 730.33	2 864 673.84		R100	74 621.62	2 864 620.56
L101	74 829.81	2 864 721.94		R101	74 620.24	2 864 613.89
L102	74 891.33	2 864 768.74		R102	74 617.52	2 864 605.61
				Vel Sheet	10 Van of	13 P827/14

PADRESERWE KOÖRDINATE / ROAD RESERVE CO-ORDINATES						
LINKERKANT/LEFT HAND SIDE				REGTERKANT/RIGHT HAND SIDE		
	Y	X	WG 29°		Y	X
L103	74 941.11	2 864 810.59		R103	74 615.70	2 864 599.16
L104	74 885.28	2 864 714.41		R104	74 611.55	2 864 590.01
L105	74 851.72	2 864 688.92		R105	74 605.51	2 864 576.36
L106	74 801.08	2 864 652.60		R106	74 597.58	2 864 560.56
L107	74 759.48	2 864 626.25		R107	74 583.49	2 864 533.60
L108	74 712.91	2 864 597.11		R108	74 525.81	2 864 422.75
L109	74 713.45	2 864 468.20		R109	74 520.17	2 864 411.91
L110	74 708.24	2 864 204.29		R110	74 489.74	2 864 350.19
L111	74 709.41	2 864 177.09		R111	74 483.29	2 864 337.11
L112	74 713.34	2 864 086.07		R112	74 475.72	2 864 316.64
L113	74 714.54	2 864 047.04		R113	74 476.90	2 864 304.38
L114	74 714.98	2 863 987.06		R114	74 481.96	2 864 293.06
L115	74 716.79	2 863 933.05		R115	74 487.62	2 864 289.58
L116	74 719.67	2 863 894.38		R116	74 484.85	2 864 273.01
L117	74 720.52	2 863 872.47		R117	74 484.72	2 864 256.58
L118	74 724.18	2 863 777.72		R118	74 481.23	2 864 193.96
L119	74 725.61	2 863 740.56		R119	74 484.84	2 864 131.35
L120	74 728.56	2 863 676.76		R120	74 495.36	2 864 072.00
L121	74 736.30	2 863 537.17		R121	74 506.55	2 864 029.29
L122	74 741.15	2 863 491.73		R122	74 510.79	2 864 017.36
L123	74 742.72	2 863 467.13		R123	74 527.20	2 863 971.22
L124	74 733.60	2 863 436.32		R124	74 547.20	2 863 914.62
L125	74 765.14	2 862 981.13		R125	74 559.64	2 863 866.66
L126	74 771.85	2 862 768.09		R126	74 568.56	2 863 808.27
L127	74 814.89	2 862 497.18		R127	74 570.81	2 863 749.21
L128	74 826.22	2 862 467.73		R128	74 566.19	2 863 689.63
L129	74 855.98	2 862 409.52		R129	74 558.69	2 863 647.11
L130	74 875.91	2 862 381.07		R130	74 543.71	2 863 587.43
L131	74 950.86	2 862 297.43		R131	74 573.74	2 863 579.14
L132	74 984.46	2 862 179.66		R132	74 633.65	2 863 791.00
L133	74 989.59	2 862 149.89		R133	74 645.44	2 863 740.92
L134	74 998.16	2 862 083.28		R134	74 650.58	2 863 563.50
L135	75 006.56	2 862 070.60		R135	74 654.13	2 863 463.38
L136	75 066.11	2 862 042.83		R136	74 647.45	2 863 401.99
L137	75 133.76	2 862 023.25		R137	74 644.94	2 863 279.78
L138	75 124.06	2 861 991.06		R138	74 644.21	2 863 188.16
L139	75 119.73	2 861 975.47		R139	74 659.96	2 862 974.18
L140	74 984.22	2 862 012.57		R140	74 695.00	2 862 762.26
L141	74 927.75	2 861 868.27		R141	74 698.29	2 862 645.16
L142	74 904.57	2 861 773.46		R142	74 709.18	2 862 503.92
L143	74 897.63	2 861 711.42		R143	74 689.94	2 862 375.26
L144	74 910.96	2 861 559.69		R144	74 661.65	2 862 294.47
L145	74 924.87	2 861 447.98		R145	74 640.57	2 862 231.59
L146	74 957.48	2 861 233.28		R146	74 614.15	2 862 197.49
L147	74 980.02	2 861 066.16		R147	74 569.74	2 862 207.18
L148	74 992.95	2 860 987.57		R148	74 540.47	2 862 218.23
L149	75 024.54	2 860 808.14		R149	74 482.64	2 862 248.03
L150	75 057.48	2 860 628.25		R150	74 478.51	2 862 224.65
L151	75 087.59	2 860 474.12		R151	74 475.26	2 862 206.78
L152	75 092.42	2 860 449.05		R152	74 613.53	2 862 135.82
L153	75 128.75	2 860 270.14		R153	74 616.02	2 862 015.34
				Vel 11 Sheet	Van 13 of	P827/14

PADRESERWE KOÖRDINATE / ROAD RESERVE CO-ORDINATES						
LINKERKANT/LEFT HAND SIDE				REGTERKANT/RIGHT HAND SIDE		
	Y	X	WG 29°		Y	X
L154	75 166.80	2 860 091.62		R154	74 640.22	2 861 956.32
L155	75 206.43	2 859 913.38		R155	74 659.59	2 861 927.73
L156	75 247.70	2 859 735.52		R156	74 729.13	2 861 843.37
L157	75 290.52	2 859 558.15		R157	74 748.68	2 861 815.03
L158	75 330.37	2 859 399.42		R158	74 777.62	2 861 757.06
L159	75 367.77	2 859 264.39		R159	74 796.14	2 861 697.83
L160	75 394.98	2 859 177.67		R160	74 823.48	2 861 547.34
L161	75 424.40	2 859 091.62		R161	74 845.69	2 861 427.17
L162	75 456.13	2 859 006.38		R162	74 871.20	2 861 248.35
L163	75 464.54	2 858 985.45		R163	74 884.06	2 861 189.65
L164	75 489.99	2 858 922.03		R164	74 895.60	2 861 118.08
L165	75 518.62	2 858 851.95		R165	74 919.24	2 860 974.89
L166	75 576.15	2 858 749.47		R166	74 950.83	2 860 794.54
L167	75 586.59	2 858 731.71		R167	74 984.11	2 860 614.30
L168	75 719.85	2 858 505.34		R168	75 011.11	2 860 474.77
L169	75 743.42	2 858 470.02		R169	75 018.92	2 860 434.44
L170	76 057.14	2 857 822.61		R170	75 055.44	2 860 254.88
L171	76 146.14	2 857 610.34		R171	75 093.60	2 860 075.68
L172	76 180.78	2 857 527.70		R172	75 133.37	2 859 896.76
L173	76 318.38	2 857 242.14		R173	75 168.96	2 859 717.30
L174	76 338.17	2 857 196.73		R174	75 208.96	2 859 538.38
L175	76 421.83	2 857 042.70		R175	75 229.25	2 859 462.86
L176	76 516.25	2 856 892.95		R176	75 259.32	2 859 361.19
L177	76 535.96	2 856 867.30		R177	75 289.97	2 859 274.41
L178	76 549.82	2 856 849.95		R178	75 318.50	2 859 187.00
L179	76 635.26	2 856 749.18		R179	75 346.35	2 859 104.92
L180	76 668.18	2 856 710.46		R180	75 374.33	2 859 029.12
L181	76 697.54	2 856 680.53		R181	75 394.38	2 858 978.06
L182	76 794.58	2 856 610.65		R182	75 411.26	2 858 935.05
L183	76 873.07	2 856 520.49		R183	75 451.38	2 858 842.37
L184	76 886.55	2 856 517.92		R184	75 494.01	2 858 750.84
L185	76 992.73	2 856 522.52		R185	75 501.13	2 858 735.98
L186	76 996.06	2 856 475.49		R186	75 557.05	2 858 619.24
L187	76 890.49	2 856 457.16		R187	75 579.28	2 858 572.84
L188	76 931.08	2 856 345.43		R188	75 588.81	2 858 551.91
L189	76 987.65	2 856 232.02		R189	75 631.66	2 858 415.63
L190	76 995.90	2 856 220.37		R190	75 945.13	2 857 759.52
L191	77 039.95	2 856 154.32		R191	76 046.02	2 857 600.64
L192	77 051.61	2 856 136.83		R192	76 233.49	2 857 262.52
L193	77 106.13	2 856 051.34		R193	76 319.42	2 857 082.07
				R194	76 364.08	2 857 002.03
				R195	76 487.65	2 856 823.32
				R196	76 562.77	2 856 712.66
				R197	76 596.55	2 856 653.85
				R198	76 633.37	2 856 588.29
				R199	76 676.45	2 856 505.31
				R200	76 675.06	2 856 496.82
				R201	76 671.49	2 856 491.09
				R202	76 650.43	2 856 487.59
				R203	76 638.60	2 856 498.76
				R204	76 610.66	2 856 491.46
				Vel 12	Van 13	P827/14
				Sheet	of	

This gazette is also available free online at www.gpwonline.co.za