

Labour force survey

September 2003

Co-operation between Statistics South Africa (Stats SA), the citizens of the country, the private sector and government institutions is essential for a successful statistical system. Without continued co-operation and goodwill, the timely release of relevant and reliable official statistics will not be possible.

**Embargoed until:
25 March 2004
11:00**

Stats SA publishes approximately three hundred different releases each year. It is not economically viable to produce them in more than one of South Africa's eleven official languages. Since the releases are used extensively, not only locally, but also by international economic and social-scientific communities, Stats SA releases are published in English only.

Published by Statistics South Africa, Private Bag X44, Pretoria 0001

© Statistics South Africa, 2004

Users may apply or process this data, provided Statistics South Africa (Stats SA) is acknowledged as the original source of the data; that it is specified that the application an/or analysis is the result of the user's independent processing of the data; and that neither the basic data nor any reprocessed version or application thereof may be sold or offered for sale in any form whatsoever without prior permission from Stats SA.

Stats SA Library Cataloguing-in-Publication (CIP) Data

Labour Force Survey September 2003/ Statistics South Africa. Pretoria: Statistics South Africa, 2001

xiv 76 p.

Biannually, No.1

1. Labour supply – Statistics
 2. Labour supply (South Africa)
 3. Unemployment (South Africa)
 4. Informal sector (Economics) – South Africa
 5. Formal sector (Economics) – South Africa
- I. Statistics South Africa
II. Series
(LCSH 16)

A complete set of Stats SA publications is available at Stats SA Library and the following libraries:

National Library of South Africa, Pretoria Division
National Library of South Africa, Cape Town Division
Library of Parliament, Cape Town
Bloemfontein Public Library
Natal Society Library, Pietermaritzburg
Johannesburg Public Library
Eastern Cape Library Services, King William's Town
Central Regional Library, Polokwane
Central Reference Library, Nelspruit
Central Reference Collection, Kimberley
Central Reference Library, Mmabatho

Obtainable from: Printing and Distribution, Statistics South Africa

Tel: (012) 310 8251

Fax: (012) 321 7381

E-mail: distribution@statssa.gov.za

CONTENTS

	Page
Introduction	i
The labour market in September 2003	ii
Labour market changes	
<i>Labour market trends: March 2003 and September 2003</i>	iii
Employment in the formal and informal sectors: September 2003	
<i>Employment by sector</i>	v
<i>Employment by sector and gender</i>	v
<i>Employment by sector and population group</i>	vi
<i>Employment by main industry and sector</i>	vii
<i>Employment by main occupation</i>	vii
<i>Employment and level of education</i>	viii
<i>Comparison of formal employment figures in the LFS and the SEE</i>	ix
<i>Comparison of formal sector employment by industry in the LFS and the SEE of September 2003</i>	ix
Unemployment in September 2003	
<i>Unemployment rate by province (official definition)</i>	x
<i>Unemployment rate by population group and gender (official definition)</i>	xi
<i>Unemployment rate by highest level of education and population group (official definition)</i>	xi
<i>Unemployment rates among Africans by education level and gender</i>	xii
Labour market trends: Expanded definition of unemployment	xii
Notes	
1. <i>Official and expanded unemployment rates</i>	xiv
2. <i>Sample design</i>	xiv
3. <i>Coverage</i>	xiv
4. <i>Weighting the LFS of March 2003</i>	xiv
5. <i>Symbols used in the tables that follow</i>	xv
6. <i>Comparability of results with other Stats SA data sources</i>	xv
7. <i>Confidence intervals</i>	xv
8. <i>Estimation and use of standard error</i>	xv
9. <i>Response rates</i>	xvi
Definitions of terms	xvii
Tables	
1. Population	
1.1 By age, population group and gender	1
2. Estimated population of working age (15–65 years)	
2.1 By economic activity, population group and gender	2
2.2 By economic activity, involvement and gender	4
2.3 By population group, gender and labour market status	
2.3.1 Official definition of unemployment	6
2.3.2 Expanded definition of unemployment	7
2.4 By province, gender and labour market status	
2.4.1 Official definition of unemployment	8
2.4.2 Expanded definition of unemployment	9
2.5 By highest level of education, gender and labour market status	
2.5.1 Official definition of unemployment	
2.5.1.1 All population groups	10
2.5.1.2 Black African	11

2.5.1.3	Coloured	12
2.5.1.4	Indian/Asian	13
2.5.1.5	White	14
2.5.2	Expanded definition of unemployment	
2.5.2.1	All population groups	15
2.5.2.2	Black African	16
2.5.2.3	Coloured	17
2.5.2.4	Indian/Asian	18
2.5.2.5	White	19
2.6	By definition of unemployment, whether work-related skills training had been received, gender and labour market status	20
3.	Workers (employers, employees and self-employed)	
3.1	By main industry and sector	21
3.2	By main occupation and sector	22
3.3	By population group, gender and sector	23
3.4	By main industry, population group and gender	
3.4.1	All sectors	24
3.4.2	Formal sector	25
3.4.3	Informal sector	26
3.5	By monthly income and sector	27
3.6	By highest level of education and sector	28
3.7	By highest level of education and monthly income	
3.7.1	All population groups	29
3.7.2	Black African	30
3.7.3	Other	31
3.8	With degrees, diplomas and certificates by field of study and monthly income	32
3.9	By main industry and monthly income	33
3.10	By main occupation and monthly income	34
3.11	By employment status	
3.11.1	By sector and gender	35
3.11.2	By sector, population group and gender	37
3.12	Provision for, or contribution towards, medical aid fund/ health insurance, by main industry	
3.12.1	Formal sector	38
3.12.2	Informal sector	39
3.13	By main industry and location of business	
3.13.1	Formal sector	40
3.13.2	Informal sector	41
3.14	By main industry and number of regular workers in the business	42
3.15	By main industry and whether their company or close corporation is registered	43
3.16	By main industry and deduction of UIF contributions	44
4.	Employees	
4.1	Conditions of employment	
4.1.1	By main industry and existence of written contract	45
4.1.2	By main industry and terms of employment	46
4.1.3	By main industry and paid leave status	47
4.1.4	By main industry and trade union membership	48
4.1.5	By main industry and whether the employer provides for, or contributes towards, medical aid fund/ health insurance	49
5.	The unemployed	
5.1	By age, population group and gender	
5.1.1	Official definition of unemployment	50
5.1.2	Expanded definition of unemployment	51
5.2	By duration of job seeking, age and whether they have worked before (official definition of unemployment)	52
5.3	Unemployed persons who have worked before by length of time since they last worked and industry in which they worked	

5.3.1	Official definition of unemployment	53
5.3.2	Expanded definition of unemployment	54
5.4	Unemployed persons who have worked before by length of time since they last worked and previous occupation	
5.4.1	Official definition of unemployment	55
5.4.2	Expanded definition of unemployment	56
5.5	Unemployed persons who have worked before by length of time since they last worked and age (official definition of unemployment)	57
5.6	Unemployed persons who have never worked by duration of job seeking and age	58
5.7	By highest level of education, population group and gender	
5.7.1	Official definition of unemployment	59
5.7.2	Expanded definition of unemployment	60
5.8	Unemployed persons with degrees, diplomas and certificates by field of study, definition of unemployment and gender	61
6.	Unemployed and not economically active population by reason for not working and gender	
6.1	Official definition of unemployment	62
6.2	Expanded definition of unemployment	63
7.	Population aged 66 years and older	
7.1	By type of economic activity, gender and involvement in the activity	64
7.2	By type of economic activity, population group and involvement in the activity	66
7.3	Those who are working by population group, gender and sector	68
7.4	Those who are working by main industry and gender	69
7.5	Those who are working by occupation and gender	70
8.	Voluntary work among population of working age (15-65 years)	
8.1	Population by province and involvement in uncompensated work	71
8.2	Those engaged in voluntary work by age, population group and gender	72
8.3	Those engaged in voluntary work by population group, gender and labour market status	
8.3.1	Official definition of unemployment	73
8.3.2	Expanded definition of unemployment	74
8.4	Population by type of uncompensated activity, population group, involvement in the activity and gender	75

Data and metadata set

Labour force survey September 2003

The data and metadata set from the *Labour force survey September 2003* will be available on CD-ROM at a cost of R1000.

For more details, and to place orders, contact

**User Information Services
Statistics South Africa
Private Bag X44
Pretoria
0001
South Africa**

**Tel: (012) 310-8600
Fax: (012) 310-8500
E-mail: info@statssa.gov.za
website: www.statssa.gov.za**

LABOUR FORCE SURVEY ROUND 8: SEPTEMBER 2003

This statistical release presents a selection of key findings and additional tables from Stats SA's eighth labour force survey (LFS), conducted in September 2003, which examines the extent of employment in both the formal and informal sectors of the country, and the extent of unemployment. The survey gathered detailed information on approximately 68 000 adults of working age (15–65 years) living in 30 000 dwelling units across the country. This release also compares employment and unemployment in September 2003 with data from the previous LFS of March 2003.

INTRODUCTION

The LFS is a twice-yearly rotating panel household survey, specifically designed to measure the dynamics of employment and unemployment in the country. It measures a variety of issues related to the labour market, including unemployment rates (official and expanded), according to standard definitions of the International Labour Organisation (ILO). *For these definitions see Note 1 below.*

Statistics South Africa is presently using a rotating panel methodology to collect labour force statistics from households, to enable it to obtain a better picture of movements into and out of the labour market over time. A rotating panel sample involves visiting the same dwelling units on a number of occasions (in this instance, five at most), and after the panel is established, replacing a proportion of these dwelling units each round (in this instance, 20%). New dwelling units are added to the sample to replace those that are taken out. The advantage of this type of design is that it offers the ability to see how the work situation of members of the same households changes over time, while retaining the larger picture of the overall employment situation in the country. It also allows for both longitudinal and cross-sectional analysis.

The first pilot round of LFS fieldwork took place in February 2000, based on a probability sample of 10 000 dwelling units. The sample was increased to 30 000 dwelling units in September 2000. The results of both these surveys, benchmarked to Census 1996, were published as discussion documents. The third round of the LFS took place in February 2001, using the same 30 000 dwelling units as in the second round. The results of this third round were again benchmarked to Census 1996 but published as official statistics. Since then all rounds have been published as official statistics.

For the fourth round, conducted in September 2001, a new sample of 30 000 dwelling units was visited, since respondents were complaining of response fatigue after completing both the LFS and the Income and Expenditure survey questionnaires, but the benchmark remained Census 1996. Rotation of 20% of the new sample was implemented during the fifth round in February 2002. Of the 30 000 dwelling units visited during the fourth LFS, 80% were visited again. The remaining 20% comprised new dwelling units. The same rotation procedure has been implemented for all subsequent rounds. The seventh round, in March 2003, and the current one have been benchmarked to Census 2001. The present document gives the findings of the eighth round and comparison is made to the seventh round.

All the labour force survey results, at this stage, are based on a cross-sectional analysis, since there are insufficient collections over time for longitudinal analysis.

THE LABOUR MARKET IN SEPTEMBER 2003

Table A is read as follows: in the row marked **a**, and in the column labeled 'Estimate ('000)', we see that a total of 11 622 000 people were estimated to be employed in September 2003. The lower limit of this estimate, within 95% confidence limits, is 11 395 000, while the upper limit is 11 849 000. In other words, taking sampling error into account we are 95% sure that the actual number of people who were employed in September 2003 is somewhere between 11 395 000 and 11 849 000.

TABLE A: LABOUR MARKET TRENDS IN SEPTEMBER 2003 ACCORDING TO THE OFFICIAL DEFINITION OF UNEMPLOYMENT				
		95% confidence intervals		
		Lower limit (^{'000})	Estimate (^{'000})	Upper limit (^{'000})
a	Total employed	11 395	11 622	11 849
b	Total unemployed (official definition)	4 369	4 570	4 771
c	Total economically active = a + b	15 878	16 192	16 506
d	Total not economically active	13 394	13 725	14 055
e	Total aged 15–65 years = c + d	29 406	29 917	30 428
f	Official unemployment rate = b * 100 / c	27,3%	28,2%	29,2%
g	Labour force participation rate = c * 100 / e	53,4%	54,1%	54,8%
h	Labour absorption rate = a * 100 / e	38,1%	38,8%	39,6%

In Table A, shows the overall labour market patterns for September 2003, based on the official definition of unemployment (*see Note 1 for this definition*). It provides information about the following:

- the estimated total number of people in the age category 15–65 years (those of working age);
- the number of people in this age category who were not economically active (for example, full-time students, full-time homemakers, retired people and the disabled who are unable to work);
- those who were economically active (both the employed and the unemployed according to the official definition of unemployment);
- the labour force participation rate (the percentage of all people aged 15–65 years who are economically active); and
- the labour absorption rate (the percentage of all those aged 15–65 years who are actually employed).

The table shows that, in September 2003, there were an estimated 29,9 million people aged between 15 and 65 years. Among these people:

- approximately 16,2 million were economically active, of whom
 - 11,6 million were employed, and
 - 4,6 million were unemployed; and
- 13,7 million were not economically active, of whom
 - 5,3 million were full-time scholars,
 - 1,3 million were full-time homemakers,
 - 1,3 million were disabled or chronically ill, hence unable to work,
 - 1,0 million were either too young or too old to work,
 - 0,3 million were retired, and
 - the remainder were not economically active for other reasons.

The official unemployment rate is estimated to be 28,2%. This is a significant decrease from the March 2003 figure. However there is no significant increase in employment over the same period. The drop in the unemployment rate is most probably due to discouraged job seekers no longer being classified as unemployed. This is reflected in the significant increase in the number of not economically active people.

LABOUR MARKET CHANGES

Labour market trends: March 2003 and September 2003

The statistics in Table B indicate that there have been significant changes in the labour market between March 2003 and September 2003.

TABLE B: LFS COMPARISON MARCH 2003 AND SEPTEMBER 2003 LABOUR MARKET MEASUREMENTS USING OFFICIAL DEFINITION OF UNEMPLOYMENT WITHIN 95% CONFIDENCE LIMITS							
Variable			Lower limit (‘000)	Esti- mate (‘000)	Upper limit (‘000)	Precision of difference (‘000)	Actual difference (‘000)
a	Total employed = a					350	57
		Mar 2003	11 298	11 565	11 832		
		Sep 2003	11 395	11 622	11 849		
b	Total unemployed (official definition = b					301	-680*
		Mar 2003	5 026	5 250	5 473		
		Sep 2003	4 369	4 570	4 771		
c	Total economically active = c					487	-623*
		Mar 2003	16 442	16 815	17 187		
		Sep 2003	15 878	16 192	16 506		
d	Total not economically active = d					495	985*
		Mar 2003	12 372	12 740	13 108		
		Sep 2003	13 394	13 725	14 055		
e	Total aged 15-65 years = c + d = e					781	362
		Mar 2003	28 964	29 555	30 145		
		Sep 2003	29 406	29 917	30 428		
f	Official unemployment rate b/c*100 = f					Percentage points	
		Mar 2003	30,2%	31,2%	32,2%	1,4	-3,0*
		Sep 2003	27,3%	28,2%	29,2%		
g	Labour force participation rate = c/e*100 = g					1,1	-5,8*
		Mar 2003	56,1%	56,9%	57,7%		
		Sep 2003	53,4%	54,1%	54,8%		
h	Labour absorption rate = a/e*100 = h					1,1	-0,3
		Mar 2003	38,4%	39,1%	39,9%		
		Sep 2003	38,1%	38,8%	39,6%		

- Statistically significant at 95% level of confidence

As indicated in Table B, the total number of employed people was estimated to be 11 565 000 in March 2003, by September 2003, the total number of employed people had risen to 11 622 000. The difference between the two figures is 57 000. However 57 000 lies between -350 000 and +350 000 (precision of difference). This implies that the difference between the two estimates is not statistically significant. Therefore the increase in the number of employed people between March 2003 and September 2003 is not statistically significant and can be explained by sampling error.

The number of unemployed people (official definition) fell from 5,3 million people in March 2003 to 4,6 million people in September 2003 (a decline of 680 thousand people). However, this decline was accompanied by an increase in the not economically active population over the same period – from 12,7 million to 13,7 million (an increase of 985 thousand people). The combination of these two developments suggests that people who were unemployed in March 2003 had changed their status to not economically active by September 2003.

As indicated earlier, employment levels remained stable over the same period. Moreover, the combination of stable employment with declining numbers in the economically active population, resulted in a fall in the official unemployment rate from 31,2% in March to 28,2% in September. However, the expanded unemployment rate (which does not require active job search by the unemployed) remained virtually unchanged over the same period.

Table B also shows the following:

- Taking sampling error into account, the total number of people who were economically active was, significantly lower in September 2003 than in March 2003.
- The decrease in the number of unemployed people between March 2003 and September 2003, using the official definition of unemployment, is also statistically significant.
- The decrease in the unemployment rate from 31,2% in March 2003 to 28,2% in September 2003 is statistically significant.
- The labour force participation rate also showed a significant decrease between March 2003 (56,9%) and September 2003 (54,1%).
- There was no statistically significant change in the labour absorption rate.

TABLE C: LFS COMPARISON MARCH 2003 AND SEPTEMBER 2003 LABOUR MARKET MEASUREMENTS USING OFFICIAL DEFINITION OF UNEMPLOYMENT WITHIN 95% CONFIDENCE LIMITS						
Industry		Lower limit (‘000)	Estimate (‘000)	Upper limit (‘000)	Precision of difference (‘000)	Actual difference (‘000)
Total employed	Mar 2003	11 298	11 565	11 832	350	57
	Sep 2003	11 395	11 622	11 849		
Agriculture	Mar 2003	1 175	1 288	1 400	141	-91
	Sep 2003	1 103	1 197	1 291		
Mining	Mar 2003	435	514	592	109	-11
	Sep 2003	428	503	578		
Manufacturing	Mar 2003	1 578	1 668	1 758	123	-34
	Sep 2003	1 548	1 634	1 721		
Electricity	Mar 2003	70	88	106	25	-2
	Sep 2003	69	86	103		
Construction	Mar 2003	533	583	633	68	43
	Sep 2003	580	626	672		
Trade	Mar 2003	2 267	2 373	2 478	142	78
	Sep 2003	2 356	2 451	2 546		
Transport	Mar 2003	546	598	650	69	-35
	Sep 2003	517	563	608		
Business services	Mar 2003	950	1 027	1 104	106	52
	Sep 2003	1 005	1 079	1 152		
Community services	Mar 2003	2 075	2 183	2 290	151	82
	Sep 2003	2 159	2 265	2 370		
Private households	Mar 2003	1 129	1 202	1 274	101	-17
	Sep 2003	1 115	1 185	1 255		
Other/unspecified industry	Mar 2003		42			
	Sep 2003		34			

Table C compares the number of workers by industry between March 2003 and September 2003. As indicated, none of the differences shown in Table C over the period are statistically significant.

EMPLOYMENT IN THE FORMAL AND INFORMAL SECTORS

Employment by sector: March 2003 and September 2003

Comparing employment status by sector between March and September 2003, Table D indicates the following:

- The total number of employed people was stable between March and September 2003, at approximately 11,6 million.
- The total number of people employed in the formal sector, excluding agriculture, over this period, was also stable, at approximately 7,4 million.
- There was a slight decrease in employment in commercial agriculture but the decrease is not statistically significant.
- There was a statistically significant decrease in subsistence or small-scale farming.
- Employment in the informal sector remained stable.
- Employment in domestic service also remained stable

TABLE D: LFS COMPARISON MARCH 2003 AND SEPTEMBER 2003 SECTOR IN WHICH EMPLOYED PEOPLE WORK WITHIN 95% CONFIDENCE LIMITS						
		Lower limit (000s)	Esti- mate (000s)	Upper limit (000s)	Precision of difference (‘000)	Actual difference (‘000)
Total employed	Mar 2003	11 298	11 565	11 832	350	57
	Sep 2003	11 395	11 622	11 849		
Employed in the formal sector (excluding agriculture)	Mar 2003	7 147	7 358	7 568	284	103
	Sep 2003	7 271	7 461	7 651		
Employed in commercial agriculture	Mar 2003	768	865	945	110	-33
	Sep 2003	767	832	897		
Employed in subsistence or small-scale agriculture	Mar 2003	376	420	464	53	-70*
	Sep 2003	321	350	379		
Employed in informal sector	Mar 2003	1 772	1 845	1 918	100	54
	Sep 2003	1 831	1 899	1 967		
Employed in domestic service	Mar 2003	961	1 005	1 048	61	17
	Sep 2003	980	1 022	1 065		
Employed sector unspecified	Mar 2003		73			
	Sep 2003		58			

* Statistically significant at 95% level of confidence

Employment by sector and gender

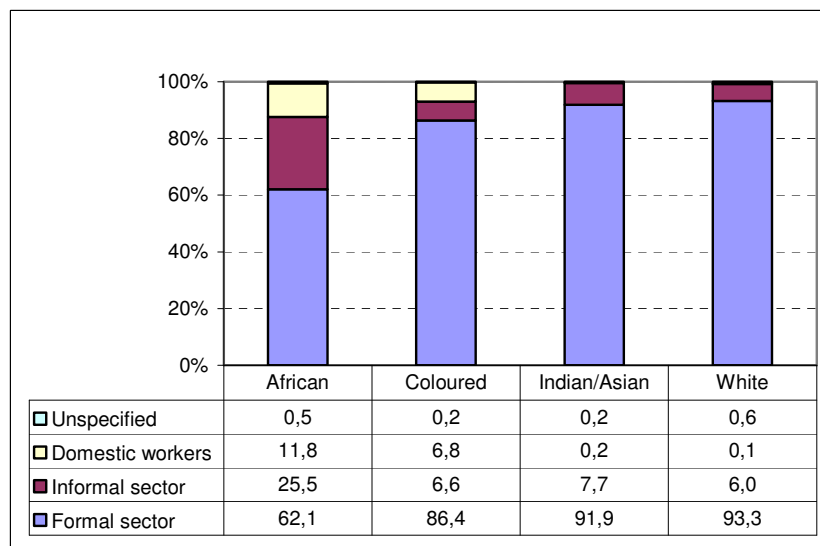
Figure 1 indicates employment in each sector by gender in September 2003. In this breakdown, the formal sector includes commercial agriculture, and the informal sector includes small-scale or subsistence agriculture but excludes domestic workers, who are grouped separately. The figure shows that:

- Overall, formal sector employment accounts for 79,1% of male employment and 61,7% of female employment.
- The informal sector accounts for a similar percentage of total employment among both men (19,6%) and women (19,0%).
- However, the share of domestic workers among employed women was much bigger (18,8%) than among employed men (0,7%). Overall, domestic work accounted for 8,8% employment.

Figure 1: Male and female workers by employment sector: September 2003***Employment by sector and population group***

Figure 2 indicates that in September:

- Across all population groups the majority of workers were employed in the formal sector and a relatively small proportion was employed as domestic workers.
- Among employed Africans, formal sector employment accounted for (62,1%) of all jobs as against over 90% among the Indian/Asian and white population groups
- On the other hand, the African population had the highest percentage (25,5%) employed in the informal sector compared to the other population groups (6,6%, 7,7% and 6,0% of the coloured, Indian/Asian and white groups respectively).
- The percentage of African workers employed as domestic workers was 11,8%, and of coloured workers 6,8%, but only 0,2% of employed Indians/Asians and 0,1% of employed whites worked as domestic workers.

Figure 2: Workers in each population group by employment sector: September 2003

Employment by main industry and sector

Table E compares employment in the formal and the informal sectors by industry. It indicates that in September 2003:

- Approximately 8,3 million people were employed in the formal sector, about 2,2 million people in the informal sector, and 1,0 million in domestic work.
- The largest group of people employed in the formal sector worked in the community, social and personal services industry (25,1%), whereas in the informal sector the largest group worked in trade (40,4%).
- Approximately 15,6% of the people working in the informal sector were employed in agriculture, making the agricultural industry the second biggest industry in terms of informal sector employment.
- On the other hand, about 10,0% of those working in the formal sector were employed in agriculture, making this industry the fifth biggest in terms of formal sector employment.

TABLE E: EMPLOYMENT IN THE FORMAL AND INFORMAL SECTORS BY INDUSTRY (INCLUDING AGRICULTURE), SEPTEMBER 2003								
Industry	Formal		Informal		Domestic		Total	
	N (‘000)	%	N (‘000)	%	N (‘000)	%	N (‘000)	%
Agriculture	832	10,0	350	15,6			1 197	10,3
Mining	500	6,0	2	0,1			503	4,3
Manufacturing	1 432	17,3	198	8,8			1 634	14,1
Electricity	84	1,0	2	0,1			86	0,7
Construction	360	4,3	259	11,5			626	5,4
Trade	1 532	18,5	909	40,4			2 451	21,1
Transport	438	5,3	120	5,3			563	4,8
Business services	1 000	12,1	74	3,3			1 079	9,3
Community services	2 082	25,1	176	7,8			2 265	19,5
Private households	7	0,1	155	6,9	1 022	100,0	1 185	10,2
Other/unspecified industry	26	0,3	3	0,1			34	0,3
Total	8 293	100,0	2 249	100,0	1 022	100,0	11 622	100,0

Employment by main occupation

Figure 3 indicates that most of the employed were working in elementary occupations excluding domestic work (about 2,6 million people), followed by craft and related trades workers (about 1,4 million people) and then service workers (about 1,4 million people). The occupational group with the least number of workers was skilled agricultural and fishery workers (approximately 0,3 million people). Skilled agricultural work includes skilled field crop and vegetable growers; gardeners, horticultural and nursery growers; dairy and livestock producers; poultry producers; and forestry workers and loggers; while unskilled farm labourers fall in the elementary occupations group.

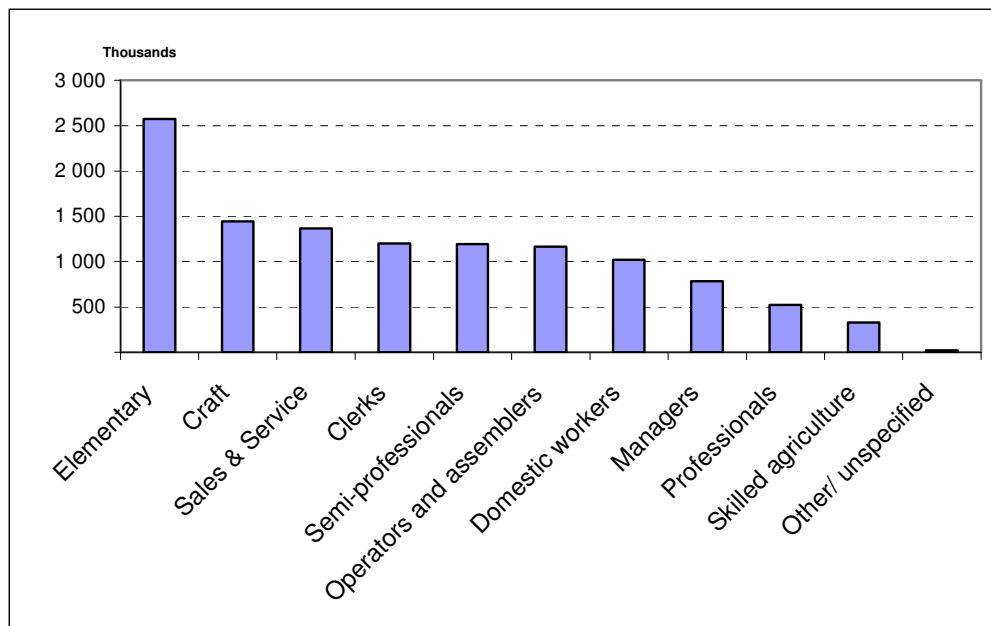
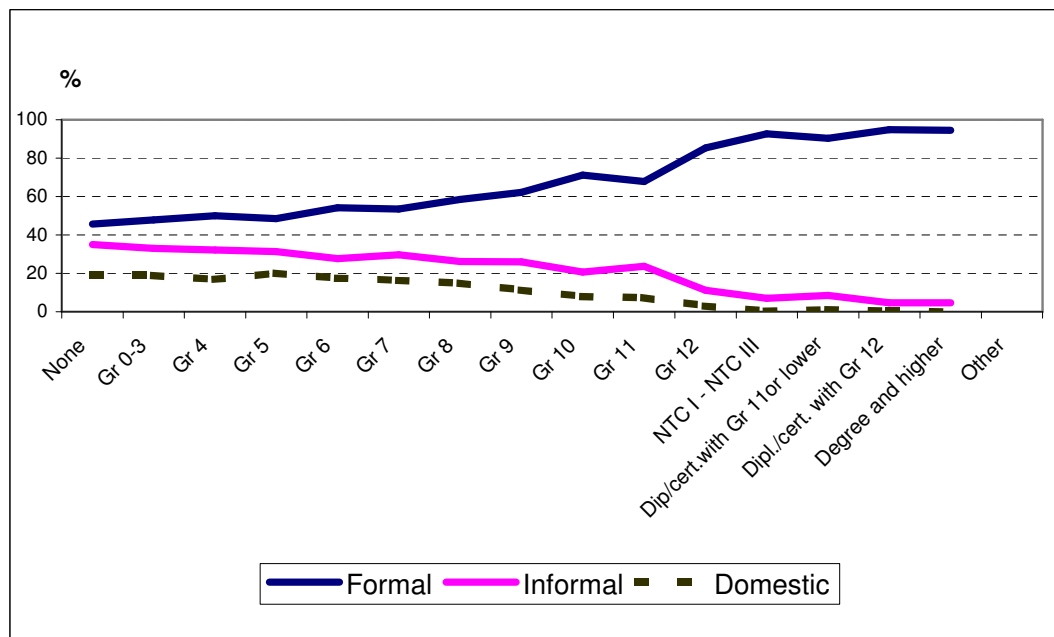
Figure 3: Workers by main occupation: September 2003**Employment and level of education**

Figure 4 shows employment in each sector by level of education in September 2003. It indicates that the lower the level of education the less likely it is for the individual to be employed in the formal sector. Conversely, the higher the level of education the more likely it is for the person to be employed in the formal sector. For example, among employed people with no education, 45,6% worked in the formal sector, 35,0% were employed in the informal sector and 19,1% were employed in domestic work. Among the employed with grade 12 as their highest level of education, 85,4% were employed in the formal sector, 11,1% were employed in the informal sector and 3,0% in domestic service.

Figure 4: Workers by employment sector and highest level of education: September 2003

Comparison of formal employment figures in the LFS and the SEE

Formal sector employment data may be obtained from another Stats SA data set, the quarterly survey of employment and earnings (SEE), which specifically collects information on formal employment in South Africa (excluding non-VAT-registered businesses as described below).

The comparable results to the LFS of September 2003 are from the SEE of September 2003. It needs to be borne in mind that SEE obtains data from businesses, while the LFS is a household-based survey. Households contain people working in all industries whether or not the owners of those businesses pay VAT. When complex probability sampling is used, people have the same chance of being selected in their particular stratum in the sample as their overall proportion in a particular industry within that stratum.

The SEE, on the other hand, collected information in September 2003 from formal sector businesses registered for VAT, where the annual turnover is R300 000 or more. (Only businesses that make R300 000 turnover per annum or more are compelled to register for VAT. A business that does not meet this threshold is not included in the sample for SEE, even if it is VAT-registered.) The SEE therefore misses certain formal sector and informal sector businesses that are covered by the LFS. In addition, the SEE excludes agriculture, forestry, hunting and fishing.

Table F indicates that in March 2003, according to the SEE, 6,3 million people were employed in the formal sector excluding commercial agriculture. An additional 1,1 million people working in the formal sector were covered by the LFS but not in the SEE.

TABLE F: FORMAL SECTOR EMPLOYMENT ACCORDING TO THE LFS AND THE SEE OF MARCH 2003	
	(’000)
Employed according to SEE	6 368
Employed in formal sector in activities not covered in SEE	1 093
Total	7 461

Comparison of formal sector employment by industry in the LFS and the SEE of September 2003

Table G indicates that except for business services, lower levels of employment are recorded in SEE than the LFS in all types of industry covered by both surveys. Moreover all the differences are statistically significant except for the mining industry. The significant differences are most probably explained by the fact that the SEE focuses on VAT-registered businesses with a minimum turnover of R300 000.

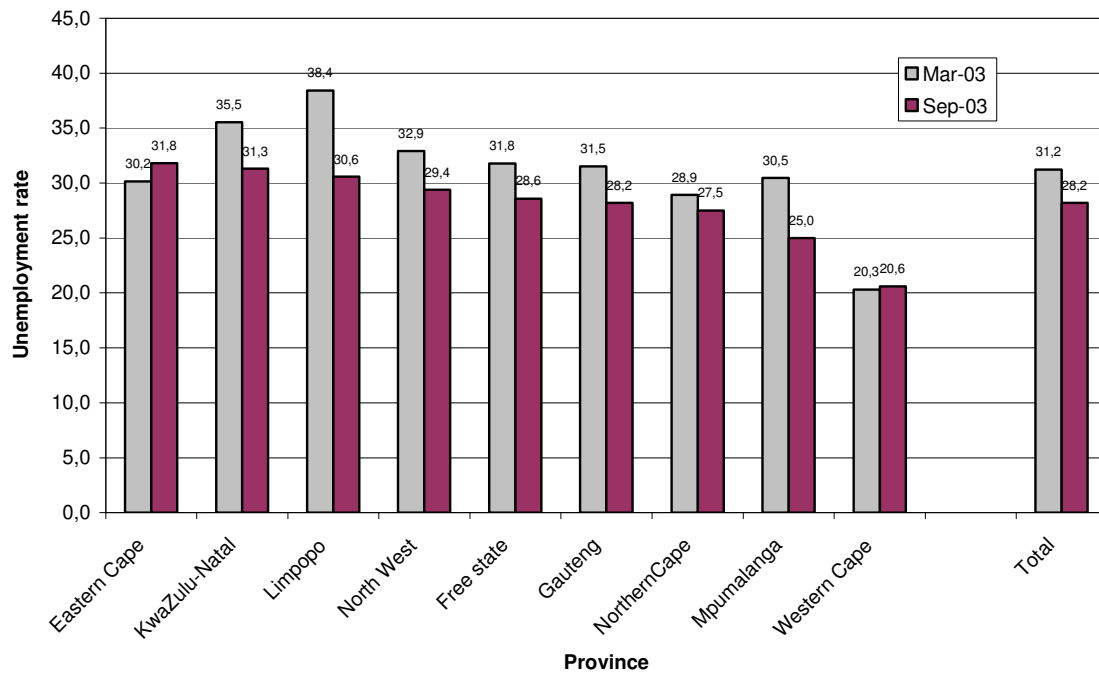
TABLE G: COMPARISON BY INDUSTRY OF FORMAL SECTOR EMPLOYMENT AS MEASURED IN THE LFS AND THE SEE OF MARCH 2003					
	LFS			SEE	Stat. signi- fificance
		95% confidence limits			
	N ('000)	Lower	Upper	N ('000)	
Agriculture	(832)	(767)	(897)	-	-
Mining	500	427	574	428	Not Sign.
Manufacturing	1 432	1 349	1 514	1 242	Sign.
Electricity	84	68	101	43	Sign.
Construction	360	326	394	288	sign.
Trade	1 532	1 459	1 605	1 276	Sign.
Transport	438	398	479	205	Sign.
Business services	1 000	930	1 069	1 127	Sign.
Community services (excluding domestic)	2 082	1 982	2 182	1 759	Sign.
Private household, other and unspecified	(33)			-	
Total (excluding agriculture, private household, other and unspecified)	7 461	7 271	7 651	6 368	Sign.

UNEMPLOYMENT IN SEPTEMBER 2003

Unemployment rate by province (official definition)

Figure 5 compares the provincial unemployment rate in March 2003 with September 2003. Eastern Cape had the highest unemployment rate (31,8%) of all the nine provinces in September 2003. All provinces showed a slight decrease in the unemployment rate between March and September 2003, except Eastern Cape and Western Cape. However, Western Cape still has the lowest unemployment rate (of approximately 20,6%).

Figure 5: Unemployment rate (official definition) by province: March and September 2003

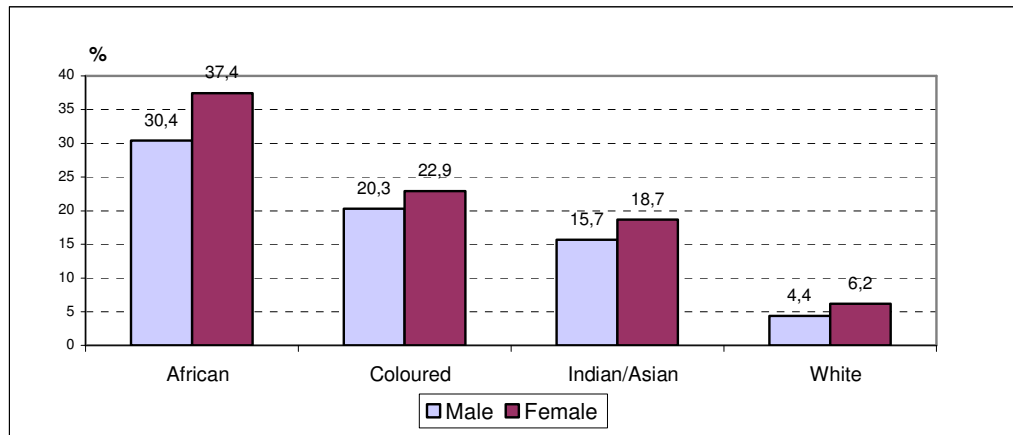


Unemployment rate by population group and gender (official definition)

Figure 6 indicates that:

- Africans had the highest unemployment rate in the country in September 2003, while whites had the lowest unemployment rate.
- The unemployment rate for women exceeded that of men in all population groups.

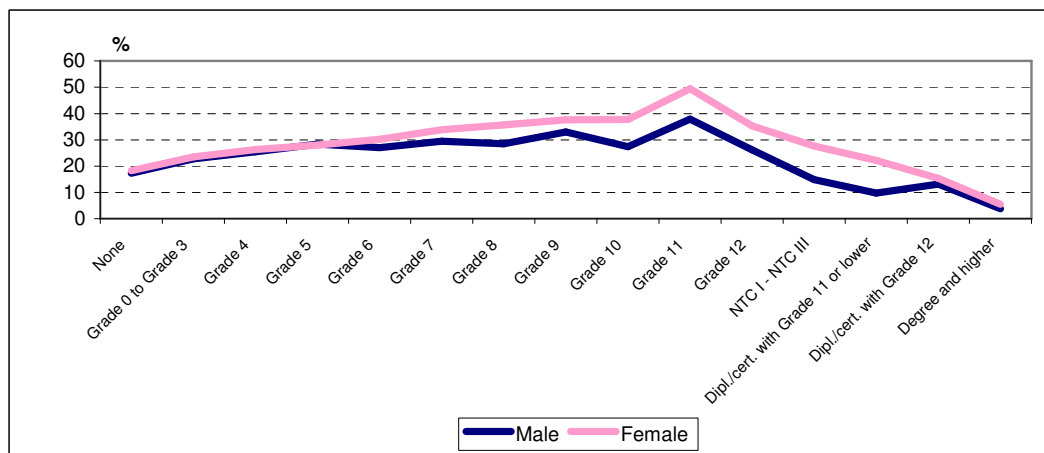
Figure 6: Unemployment rate (official definition) by population group and sex: September 2003



Unemployment rate by highest level of education and gender (official definition)

Figure 7 indicates lower unemployment rates for people with low educational qualifications and for those with post-matric qualifications. The highest unemployment rates are found among those with educational qualifications between grade 8 and grade 12, for both men and women. Generally, female unemployment rates are higher than that of men. However there is not much difference for those with no education up to grade 4. For example, the unemployment rate among both men and women for those with no education is 17,3% and 18,3% respectively, rising steadily to 37,9% for men and 49,4% for women among those with grade 11 as the highest level of education. But among those with tertiary education it drops sharply to 3,8% for men and 5,5% for women.

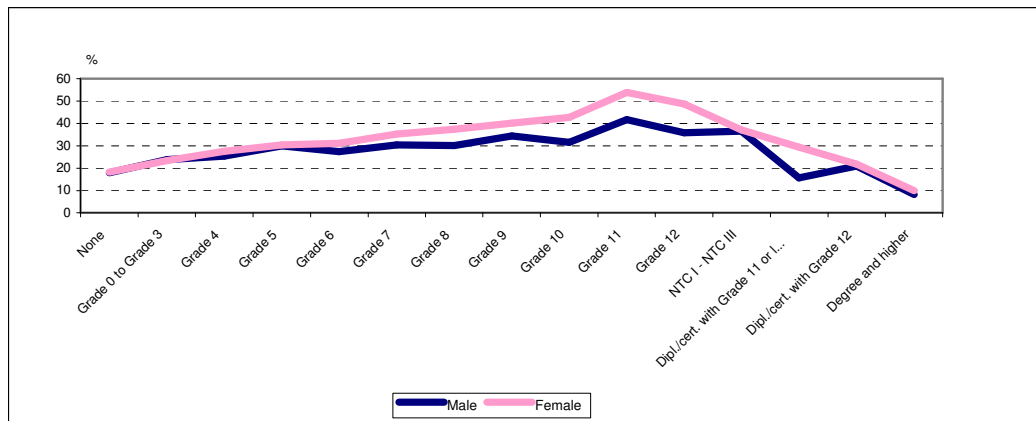
Figure 7: Unemployment rate (official definition) by highest level of education and gender: September 2003



Unemployment rates among Africans by education level and gender

Figure 8 indicates that for Africans the same pattern is found as the national described earlier. Lower unemployment rates are found among those with low educational qualifications and among those with post-matric qualifications. The highest unemployment rates are found among those with educational qualifications between grade 8 and grade 12 for both men and women. Across all educational levels the unemployment rates for women exceed those of men.

Figure 8: Unemployment rate (official definition) among Africans by highest level of education and sex: March 2003



LABOUR MARKET TRENDS: EXPANDED DEFINITION OF UNEMPLOYMENT

The main difference between the official and the expanded definitions of unemployment is the requirement in the former that, in order to be classified as unemployed, a person must have engaged in job seeking in the four weeks prior to the interview (*see Note 1 for both definitions*). Table H below shows the changes in key labour market variables between March and September 2003, using the expanded definition of unemployment.

TABLE H: LFS COMPARISON MARCH 2003 AND SEPTEMBER 2003 LABOUR MARKET MEASUREMENTS USING EXPANDED DEFINITION OF UNEMPLOYMENT WITHIN 95% CONFIDENCE LIMITS							
			Lower limit (000s)	Esti- mate (000s)	Upper limit (000s)	Precision of difference ('000)	Actual difference ('000)
a	Total employed = a	Mar 2003	11 298	11 565	11 832	350	57
		Sep 2003	11 395	11 622	11 849		
b	Total unemployed (expanded definition) = b	Mar 2003	8 128	8 421	8 714	400	-89
		Sep 2003	8 059	8 332	8 604		
c	Total economically active = c	Mar 2003	19 563	19 986	20 409	554	-32
		Sep 2003	19 595	19 954	20 312		
d	Total not economically active = d	Mar 2003	9 301	9 569	9 836	359	394*
		Sep 2003	9 724	9 963	10 202		
e	Total aged 15-65 years = c + d = e	Mar 2003	28 964	29 555	30 145	781	362
		Sep 2003	29 406	29 917	30 428		
f	Expanded unemployment rate b/c*100 = f	Mar 2003	41,2%	42,1%	43,1%	1,34	-0,3
		Sep 2003	40,8%	41,8%	42,7%		
g	Labour market participation rate = c/e*100 = g	Mar 2003	67,0%	67,6%	68,2%	0,85	-0,3
		Sep 2003	66,1%	66,7%	67,3%		
h	Labour absorption rate = a/e*100 = h	Mar 2003	38,4%	39,1%	39,9%	1,1	-0,3
		Sep 2003	38,1%	38,8%	39,6%		

* Statistically significant at 95% level of significance

Table G shows that, according to the expanded definition of unemployment, there is no statistically significant change in unemployment between March 2003 and September 2003. However there is a statistically significant increase in the not economically active population.

Mr Pali Lehohla
Statistician-General: Statistics South Africa

NOTES

1. *Official and expanded unemployment rates*

Statistics South Africa (Stats SA) uses the following definition of unemployment as its *official* definition. The *unemployed* are those people within the *economically active population* who: (a) did not work during the seven days prior to the interview, (b) want to work and are available to start work within a week of the interview, and (c) have taken active steps to look for work or to start some form of self-employment in the four weeks prior to the interview. The *expanded definition of unemployment* excludes criterion (c).

Among those who are included in the expanded but not the official definition of unemployment will be discouraged job seekers (those who said they were unemployed but had not taken active steps to find work in the four weeks prior to the interview).

Stats SA reports on the situation of the unemployed using both the official and the expanded definition. In the present economic climate, there is a proportion of discouraged work seekers who face constraints, for example high travel costs and lack of transport, when seeking work.

2. *Sample design*

For the LFS a rotating panel sample design is being used, to allow for measurement of change in people's employment situation over time. The same dwellings are visited on, at most, five different occasions. After this, new dwelling units are included for interviewing from the same PSU in the master sample. This means a rotation of 20% of dwelling units each time.

The database of enumerator areas (EAs) established during the demarcation phase of Census '96 constituted the sampling frame for selecting EAs for the LFS. Small EAs consisting of fewer than 100 dwelling units were combined with adjacent EAs to form primary sampling units (PSUs) of at least 100 dwelling units, to allow for repeated sampling of dwelling units within each PSU. The sampling procedure for the master sample involved explicit stratification by province and within each province, by urban and non-urban areas. Independent samples of PSUs were drawn for each stratum within each province. The smaller provinces were given a disproportionately large number of PSUs compared to the bigger provinces. Simple random sampling was applied to select 10 dwelling units to visit in each PSU as ultimate sampling units. If more than one household is found in the same dwelling unit all such households are interviewed.

3. *Coverage*

The target population is all households and residents in workers hostels. The survey does not cover institutions such as old age homes, hospitals, prisons and military barracks.

4. *Weighting the LFS of March 2003*

A two-stage weighting procedure was carried out on LFS March 2003. The first stage weighted the results to separate estimates of the population size, based on the population census of October 2001, as adjusted by a post-enumeration survey (PES). The second stage used post-stratification by province, gender, population group and five-year interval age groups based on mid-year estimates.

5. *Symbols used in the tables that follow*

When a dash (-) is shown there were no respondents in the category.

When a single asterisk (*) is shown in the table, the sample size was too small to give reliable estimates.

6. *Comparability of results with other Stats SA data sources*

The quarterly survey of employment and earnings (SEE) collects information on formal employment in South Africa, published in *Statistical release* P0275. The results of the March and September rounds of the SEE are comparable to the LFS.

7. *Confidence intervals*

Stats SA have calculated 95% confidence limits for key variables. These are available on request to users who require this information.

8. *Estimation and use of standard error*

The published results of the Labour Force Survey are based on representative probability samples drawn from the South African population, as discussed in the section on sample design. Consequently, all estimates are subject to sampling variability. This means that the sample estimates may differ from the population figures that would have been produced if the entire South African population had been included in the survey. The measure usually used to indicate the probable difference between a sample estimate and the corresponding population figure is the *standard error (SE)*, which measures the extent to which an estimate might have varied by chance because only a sample of the population was included.

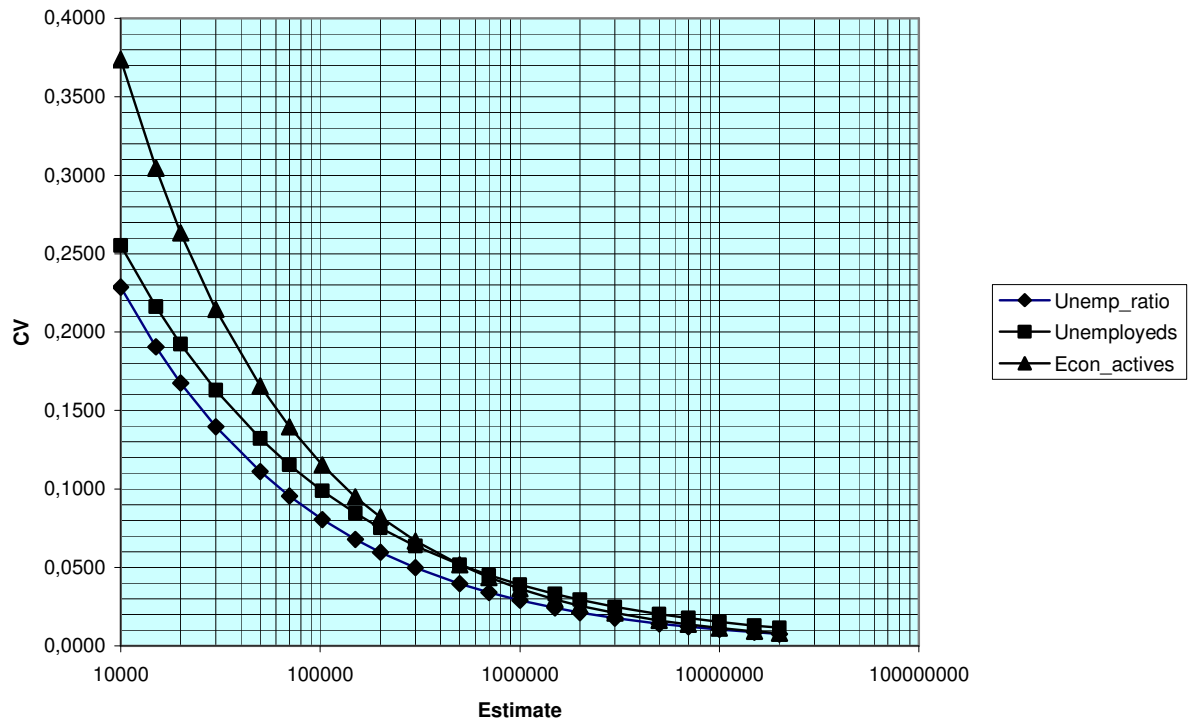
There are two major factors which influence the value of a standard error. The first factor is the sample size. Generally speaking, the larger the sample size, the more precise the estimate and the smaller the standard error. Consequently, in a national household survey such as the LFS, one expects more precise estimates at the national level than at the provincial level due to the larger sample size involved. The second factor is the variability between households of the parameter of the population being estimated, for example, the number of unemployed persons in the household.

Figure 9 below can be used in determining standard errors of unemployed and unemployment rates. Given the size of the estimate and the population parameter under consideration, an approximate value of the relative standard error of the estimate can be obtained (read off) from the relevant graph. Multiplication of this approximate value of the relative standard error with the estimate itself gives an approximate value of the SE of the estimate.

Example: Calculating the standard error of the unemployed according to the official definition.

The estimated number of unemployed is 4 570 000. Mark this on the graph and read off the corresponding coefficient of variation. In this case it is 0,021 on the curve for the unemployed. The standard error of the unemployed is approximately therefore $0,021 \times 4\,570\,000 = 95\,970$.

Figure 9: Coefficient of variation (CV) by estimate for the unemployed, the unemployment rate and the economically active (using the official definition of employment): September 2003



9. Response rates

TABLE I: RESPONSE RATES: SEPTEMBER 2003		
Response codes	Number of responses	%
Completed	26915	85,6
Non-contact	649	2,1
Refusal	564	1,8
Partly completed	17	0,1
Unusable information	2	0,0
Vacant	1569	5,0
Listing error	341	1,1
Other	1379	4,4
Total	31436	100,0

DEFINITIONS OF TERMS

A *household* consists of a single person or a group of people who live together for at least four nights a week, who eat together and who share resources.

A *dwelling unit* is any structure or part of a structure or group of structures occupied by one or more than one household; or which is vacant or under construction but could be lived in at the time of the survey. The dwelling unit is the major listing unit for this survey. However, if multiple households are identified during listing, then each household is listed separately. But the listing unit is not primarily households, as multiple households are sometimes discovered at the time of the survey. In workers hostels, (1) where rooms are occupied by individual persons/households, then each room is treated as a dwelling unit, and (2) in the case of dormitories/communal rooms, each bed is listed separately and treated as a dwelling unit. It is important to note that the dwelling unit as defined here was also the selection unit for our sample.

Population group describes the racial classification of a particular group of South African citizens. The previous government used legislation to impose this type of classification, to divide the South African population into distinct groupings on which to base apartheid policies. For quite a different reason it remains important for Stats SA to continue to use this classification wherever possible. It clearly indicates the effects of discrimination of the past, and permits monitoring of policies to alleviate discrimination. Note that, in the past, population group was based on a legal definition, but it is now based on self-perceptions and self-classification. An *African/black* person is someone who classifies him/herself as such. The same applies to a *coloured*, *Indian/Asian* or *white* person.

A *hostel* is a communal living quarter for workers, provided by a public organisation such as a local authority, or a private organisation such as a mining company. These were residential dormitories established for migrant workers during the apartheid era, and they continue to house people working in certain industries, such as the mining industry.

Institutions are communal temporary, semi-permanent or permanent living arrangements for people in special circumstances, for example prisons, police cells, school boarding facilities, hostels for the aged or the disabled, hotels and hostels for the unemployed, etc.

Primary industries include agriculture, forestry and fishing, and mining and quarrying.

Secondary industries include manufacturing, electricity and other utilities, and construction.

Tertiary industries include trade, transport, financial and business services, and social, personal and community services.

Employment status refers to whether or not the person is self-employed, or works as an employee, or both.

Location refers to whether the person lives in an urban or non-urban area.

- An *urban* area is one that was legally proclaimed as being urban prior to the redemarcation of municipalities. Such areas are towns, cities and metropolitan areas.
- All other areas are classified as *non-urban*, including commercial farms, small settlements, rural villages and other areas, which are further away from towns and cities.

(This definition is currently under review, but applies to this survey as the sample was drawn according to Census 1996 classification.)

Workers include the self-employed, employers and employees.

Labour market dynamics refer to movement into and out of the labour market, and into and out of actual employment, over a specified time period.

1. Population

1.1 By age, population group and gender

1 000

Age group	Black African			Coloured			Indian/Asian			White			Total		
	Total	Male	Female	Total	Male	Female	Total	Male	Female	Total	Male	Female	Total	Male	Female
RSA	37 040	17 575	19 465	4 263	2 014	2 249	1 239	611	627	4 123	2 016	2 108	46 686	22 227	24 458
0 - 4	3 587	1 811	1 776	421	222	198	77	37	39	255	126	130	4 340	2 197	2 143
5 - 9	4 083	2 093	1 991	426	211	216	88	40	47	278	153	125	4 877	2 498	2 379
10-14	4 532	2 241	2 291	439	213	226	102	52	50	274	149	125	5 350	2 657	2 693
15-19	4 501	2 242	2 259	450	219	230	105	60	45	313	158	155	5 370	2 681	2 689
20-24	3 699	1 774	1 926	371	175	196	119	64	54	270	128	142	4 461	2 141	2 319
25-29	3 154	1 528	1 627	370	167	204	112	57	55	290	126	164	3 928	1 877	2 050
30-34	2 593	1 216	1 376	328	147	181	121	58	63	370	189	180	3 412	1 610	1 802
35-39	2 335	1 073	1 262	318	153	165	107	51	56	364	167	197	3 127	1 445	1 682
40-44	2 094	950	1 143	289	137	152	95	42	53	335	171	164	2 815	1 302	1 513
45-49	1 632	746	886	241	111	130	87	44	43	311	154	157	2 273	1 055	1 217
50-54	1 326	581	745	184	85	100	72	34	38	269	132	137	1 856	833	1 022
55-59	899	411	488	133	52	81	53	24	29	201	101	101	1 287	588	699
60-64	838	307	532	106	46	60	39	16	23	184	86	97	1 169	456	713
65+	1 765	603	1 163	187	76	111	62	31	31	409	176	232	2 423	886	1 537

*For all values of 10 000 or lower the sample size is too small for reliable estimates.

Due to rounding numbers do not necessarily add up to totals.

2. Estimated population of working age (15-65 years)

2.1 By economic activity, population group and gender

Economic activity and population group	Involved**			Not involved			Total		
	Total	Male	Female	Total	Male	Female	Total	Male	Female
1 000									
Run or do any kind of business, big or small, for himself/herself									
Total	1 758	960	798	28 156	13 118	15 038	29 917	14 080	15 837
Black African	1 189	559	631	22 035	10 325	11 710	23 226	10 885	12 341
Coloured	72	51	21	2 736	1 249	1 487	2 809	1 301	1 508
Indian/Asian	58	45	13	861	409	453	920	454	466
White	435	303	132	2 510	1 128	1 382	2 946	1 431	1 515
Do any work for a wage, salary, commission or any payment in kind									
Total	8 297	5 072	3 226	21 617	9 007	12 610	29 917	14 080	15 837
Black African	5 233	3 399	1 833	17 992	7 484	10 508	23 226	10 885	12 341
Coloured	1 197	660	537	1 612	640	971	2 809	1 301	1 508
Indian/Asian	405	241	164	514	213	301	920	454	466
White	1 459	769	691	1 486	662	824	2 946	1 431	1 515
Do any work as a domestic worker for a wage, salary, or any payment in kind									
Total	1 162	205	957	28 752	13 873	14 879	29 917	14 080	15 837
Black African	1 055	192	863	22 169	10 692	11 478	23 226	10 885	12 341
Coloured	103	11	91	2 706	1 289	1 416	2 809	1 301	1 508
Indian/Asian	*	*	*	918	453	464	920	454	466
White	*	*	*	2 944	1 431	1 513	2 946	1 431	1 515
Help unpaid in a family business of any kind									
Total	99	35	64	29 815	14 043	15 772	29 917	14 080	15 837
Black African	76	29	47	23 149	10 855	12 294	23 226	10 885	12 341
Coloured	*	*	*	2 806	1 299	1 507	2 809	1 301	1 508
Indian/Asian	*	*	*	914	452	462	920	454	466
White	15	*	12	2 930	1 428	1 502	2 946	1 431	1 515
Do any work in his/her own or the family's plot, farm, food garden, cattle post or kraal or help in growing farm produce or in looking after animals for the household									
Total	289	159	130	29 625	13 919	15 706	29 917	14 080	15 837
Black African	268	143	126	22 956	10 741	12 215	23 226	10 885	12 341
Coloured	*	*	*	2 801	1 294	1 507	2 809	1 301	1 508
Indian/Asian	*	*	-	919	453	465	920	454	466
White	13	*	*	2 933	1 422	1 511	2 946	1 431	1 515

2. Estimated population of working age (15-65 years)

2.1 By economic activity, population group and gender (concluded)

1 000

Economic activity and population group	Involved**			Not involved			Total		
	Total	Male	Female	Total	Male	Female	Total	Male	Female
Do any construction or major repair work on his/her own home, plot, cattle post or business or those of the family									
Total	59	37	22	29 855	14 041	15 814	29 917	14 080	15 837
Black African	50	29	21	23 174	10 854	12 320	23 226	10 885	12 341
Coloured	*	*	*	2 808	1 300	1 508	2 809	1 301	1 508
Indian/Asian	*	*	*	917	452	465	920	454	466
White	*	*	*	2 939	1 425	1 514	2 946	1 431	1 515
Catch any fish, prawns, shells, wild animals or other food for sale or family food									
Total	*	*	*	29 908	14 074	15 834	29 917	14 080	15 837
Black African	*	*	*	23 220	10 881	12 339	23 226	10 885	12 341
Coloured	-	-	-	2 809	1 301	1 508	2 809	1 301	1 508
Indian/Asian	*	*	-	919	453	465	920	454	466
White	*	*	*	2 944	1 430	1 514	2 946	1 431	1 515
Beg for money or food in public									
Total	*	*	*	29 904	14 074	15 830	29 917	14 080	15 837
Black African	*	*	*	23 217	10 881	12 336	23 226	10 885	12 341
Coloured	*	*	*	2 807	1 300	1 507	2 809	1 301	1 508
Indian/Asian	*	*	-	919	454	465	920	454	466
White	*	*	-	2 945	1 430	1 514	2 946	1 431	1 515
Involved in at least one economic activity except begging									
Total	11 547	6 401	5 146	18 370	7 679	10 691	29 917	14 080	15 837
Black African	7 786	4 308	3 478	15 440	6 577	8 863	23 226	10 885	12 341
Coloured	1 374	725	649	1 435	576	859	2 809	1 301	1 508
Indian/Asian	469	288	180	451	166	285	920	454	466
White	1 910	1 074	836	1 036	357	679	2 946	1 431	1 515

* For all values of 10 000 or lower the sample size is too small for reliable estimates.

** In this table, people who are normally engaged in an economic activity but were temporarily absent from work are not counted as involved.

Totals include other and unspecified population groups and those who did not specify their involvement in the economic activities.

2. Estimated population of working age (15-65 years)

2.2 By economic activity, involvement and gender

Economic activity and sex	1 000		
	Involved**	Not involved	Total
Run or do any kind of business, big or small for himself/herself			
Total	1 758	28 156	29 917
Male	960	13 118	14 080
Female	798	15 038	15 837
Do any work for a wage, salary, commission or any payment in kind			
Total	8 297	21 617	29 917
Male	5 072	9 007	14 080
Female	3 226	12 610	15 837
Do any work as a domestic worker for a wage, salary, or any payment in kind			
Total	1 162	28 752	29 917
Male	205	13 873	14 080
Female	957	14 879	15 837
Help unpaid in a family business of any kind			
Total	99	29 815	29 917
Male	35	14 043	14 080
Female	64	15 772	15 837
Do any work in his/her own or the family's plot, farm, food garden, cattle post or kraal or help in growing farm produce or in looking after animals for the household			
Total	289	29 625	29 917
Male	159	13 919	14 080
Female	130	15 706	15 837
Do any construction or major repair work on his/her own home, plot, cattle post or business or those of the family			
Total	59	29 855	29 917
Male	37	14 041	14 080
Female	22	15 814	15 837

2. Estimated population of working age (15-65 years)**2.2 By economic activity, involvement and gender (concluded)**

1 000			
Economic activity and sex	Involved**	Not involved	Total
Catch any fish, prawns, shells, wild animals or other food for sale or family food			
Total	*	29 908	29 917
Male	*	14 074	14 080
Female	*	15 834	15 837
Beg for money or food in public			
Total	*	29 904	29 917
Male	*	14 074	14 080
Female	*	15 830	15 837
Involved in at least one of these activities except begging			
Total	11 547	18 370	29 917
Male	6 401	7 679	14 080
Female	5 146	10 691	15 837

* For all values of 10 000 or lower the sample size is too small for reliable estimates.

** In this table, people who are normally engaged in an economic activity but were temporarily absent from work are not counted as involved.

2. Estimated population of working age (15-65 years)

2.3 By population group, gender and labour market status

2.3.1 Official definition of unemployment

	Male						Female						Total					
	Total	Not economically active	Economically active				Total	Not economically active	Economically active				Total	Not economically active	Economically active			
			Total	Workers	Unem- ployed	Rate			Total	Workers	Unem- ployed	Rate			Total	Workers	Unem- ployed	Rate
Population group	N (1 000)					%	N (1 000)					%	N (1 000)					%
All population groups	14 080	5 457	8 623	6 436	2 187	25,4	15 837	8 268	7 569	5 187	2 382	31,5	29 917	13 725	16 192	11 622	4 570	28,2
Black African	10 885	4 648	6 237	4 339	1 898	30,4	12 341	6 746	5 595	3 505	2 090	37,4	23 226	11 394	11 832	7 844	3 988	33,7
Coloured	1 301	386	914	729	186	20,3	1 508	658	850	656	194	22,9	2 809	1 044	1 764	1 384	380	21,5
Indian/Asian	454	112	342	288	54	15,7	466	242	223	182	42	18,7	920	354	566	470	96	16,9
White	1 431	307	1 124	1 075	49	4,4	1 515	618	896	841	55	6,2	2 946	925	2 021	1 916	105	5,2

* For all values of 10 000 or lower the sample size is too small for reliable estimates.

Totals include other and unspecified population groups.

2. Estimated population of working age (15-65 years)

2.3 By population group, gender and labour market status

2.3.2 Expanded definition of unemployment

	Male						Female						Total					
	Total	Not economy- cally active					Total	Not economy- cally active					Total	Not economy- cally active				
			Economically active						Economically active						Economically active			
			Total	Workers	Unem- ployed	Rate			Total	Workers	Unem- ployed	Rate			Total	Workers	Unem- ployed	Rate
Population group	N (1 000)					%	N (1 000)					%	N (1 000)					%
All population groups	14 080	4 065	10 015	6 436	3 579	35,7	15 837	5 898	9 939	5 187	4 753	47,8	29 917	9 963	19 954	11 622	8 332	41,8
Black African	10 885	3 353	7 532	4 339	3 193	42,4	12 341	4 556	7 785	3 505	4 280	55,0	23 226	7 910	15 317	7 844	7 472	48,8
Coloured	1 301	316	985	729	256	26,0	1 508	531	977	656	321	32,9	2 809	847	1 961	1 384	577	29,4
Indian/Asian	454	104	351	288	62	17,8	466	224	242	182	60	24,9	920	327	592	470	122	20,7
White	1 431	289	1 142	1 075	67	5,9	1 515	583	931	841	90	9,7	2 946	872	2 074	1 916	157	7,6

* For all values of 10 000 or lower the sample size is too small for reliable estimates.

Totals include other and unspecified population groups.

2. Estimated population of working age (15-65 years)

2.4 By province, gender and labour market status

2.4.1 Official definition of unemployment

Province	Male						Female						Total					
	Total	Not economy- cally active	Economically active				Total	Not economy- cally active	Economically active				Total	Not economy- cally active	Economically active			
			Total	Workers	Unem- ployed	Rate			Total	Workers	Unem- ployed	Rate			Total	Workers	Unem- ployed	Rate
N (1 000)				%	N (1 000)				%	N (1 000)				%				
RSA	14 080	5 457	8 623	6 436	2 187	25,4	15 837	8 268	7 569	5 187	2 382	31,5	29 917	13 725	16 192	11 622	4 570	28,2
Western Cape	1 586	415	1 171	942	230	19,6	1 716	708	1 008	789	219	21,7	3 302	1 122	2 179	1 731	448	20,6
Eastern Cape	1 694	877	817	573	244	29,9	2 099	1 281	818	542	276	33,8	3 793	2 158	1 636	1 115	520	31,8
Northern Cape	257	88	169	130	39	22,9	272	153	119	79	40	33,9	529	241	288	209	79	27,5
Free State	878	301	577	444	133	23,1	936	467	469	303	166	35,4	1 814	768	1 046	747	300	28,6
KwaZulu-Natal	2 823	1 191	1 632	1 168	464	28,5	3 382	1 832	1 550	1 018	532	34,3	6 204	3 023	3 182	2 185	996	31,3
North West	1 188	487	701	514	186	26,6	1 243	760	483	322	161	33,4	2 431	1 247	1 184	836	348	29,4
Gauteng	3 413	928	2 485	1 864	621	25,0	3 374	1 360	2 014	1 366	648	32,2	6 787	2 288	4 499	3 230	1 269	28,2
Mpumalanga	965	412	553	431	122	22,0	1 054	568	487	349	138	28,4	2 020	980	1 040	780	260	25,0
Limpopo	1 276	758	518	370	148	28,5	1 761	1 140	621	420	201	32,4	3 037	1 898	1 139	790	349	30,6

* For all values of 10 000 or lower the sample size is too small for reliable estimates.

Due to rounding numbers do not necessarily add up to totals.

Totals include other and unspecified population groups.

2. Estimated population of working age (15-65 years)

2.4 By province, gender and labour market status

2.4.2 Expanded definition of unemployment

Province	Male						Female						Total							
	Total	Not economically active	Economically active				Total	Not economically active	Economically active				Total	Not economically active	Economically active					
			Total	Workers	Unem- ployed	Rate			Total	Workers	Unem- ployed	Rate			Total	Workers	Unem- ployed	Rate		
N (1 000)						%	N (1 000)						%	N (1 000)						%
RSA	14 080	4 065	10 015	6 436	3 579	35,7	15 837	5 898	9 939	5 187	4 753	47,8	29 917	9 963	19 954	11 622	8 332	41,8		
Western Cape	1 586	356	1 230	942	289	23,5	1 716	599	1 116	789	327	29,3	3 302	955	2 347	1 731	616	26,3		
Eastern Cape	1 694	639	1 055	573	482	45,7	2 099	951	1 149	542	606	52,8	3 793	1 590	2 204	1 115	1 089	49,4		
Northern Cape	257	71	186	130	56	30,1	272	116	157	79	78	49,7	529	186	343	209	134	39,1		
Free State	878	232	646	444	202	31,3	936	317	620	303	317	51,1	1 814	549	1 266	747	519	41,0		
KwaZulu-Natal	2 823	884	1 938	1 168	771	39,8	3 382	1 350	2 032	1 018	1 014	49,9	6 204	2 234	3 970	2 185	1 785	45,0		
North West	1 188	342	846	514	332	39,2	1 243	509	734	322	413	56,2	2 431	851	1 580	836	744	47,1		
Gauteng	3 413	695	2 718	1 864	854	31,4	3 374	970	2 404	1 366	1 038	43,2	6 787	1 665	5 121	3 230	1 892	36,9		
Mpumalanga	965	307	658	431	227	34,5	1 054	378	676	349	327	48,4	2 020	686	1 334	780	554	41,5		
Limpopo	1 276	539	737	370	367	49,7	1 761	709	1 052	420	632	60,1	3 037	1 248	1 789	790	999	55,8		

* For all values of 10 000 or lower the sample size is too small for reliable estimates.

Due to rounding numbers do not necessarily add up to totals.

Totals include other and unspecified population groups.

2. Estimated population of working age (15-65 years)**2.5 By highest level of education, gender and labour market status****2.5.1 Official definition of unemployment****2.5.1.1 All population groups**

	Male						Female						Total								
	Total	Not economi- cally active	Economically active				Total	Not economi- cally active	Economically active				Total	Not economy- cally active	Economically active						
			Total	Workers	Unem- ployed	Rate			Total	Workers	Unem- ployed	Rate			Total	Workers	Unem- ployed	Rate			
Highest level of education	N (1 000)						%	N (1 000)						%	N (1 000)						%
Total	14 080	5 457	8 623	6 436	2 187	25,4	15 837	8 268	7 569	5 187	2 382	31,5	29 917	13 725	16 192	11 622	4 570	28,2			
None	771	336	435	360	75	17,3	1 216	837	379	310	69	18,3	1 988	1 174	814	670	145	17,8			
Grade 0 to Grade 3/Std 1	567	244	323	249	73	22,8	628	369	259	198	61	23,5	1 195	613	582	448	134	23,1			
Grade 4/Std 2	451	183	268	200	68	25,4	478	274	205	151	54	26,3	929	457	472	350	122	25,8			
Grade 5/Std 3	546	250	296	212	84	28,4	558	327	230	166	65	28,0	1 104	577	527	378	149	28,2			
Grade 6/Std 4	801	388	412	301	111	27,0	799	462	337	235	102	30,3	1 599	850	749	536	213	28,5			
Grade 7/Std 5	1 139	547	592	418	174	29,4	1 237	721	516	341	175	33,9	2 376	1 268	1 108	759	349	31,5			
Grade 8/Std 6	1 450	735	715	511	204	28,5	1 562	957	605	389	216	35,7	3 013	1 692	1 321	900	420	31,8			
Grade 9/Std 7	1 433	807	626	420	207	33,0	1 583	1 059	524	326	198	37,7	3 016	1 866	1 150	746	404	35,1			
Grade 10/Std 8	1 560	671	889	646	243	27,4	1 743	1 050	693	431	261	37,7	3 303	1 721	1 582	1 077	505	31,9			
Grade 11/Std 9	1 151	512	639	397	242	37,9	1 438	820	618	313	306	49,4	2 589	1 331	1 257	710	548	43,6			
Grade 12/Std 10	2 848	629	2 219	1 636	583	26,3	3 159	1 139	2 020	1 306	714	35,4	6 007	1 768	4 238	2 942	1 297	30,6			
NTC I - NTC III	147	31	116	98	17	14,9	67	25	42	30	12	27,7	214	56	158	129	29	18,3			
Dipl./cert. with Grade 11/Std 9 or lower	76	12	64	58	*	9,7	111	24	87	67	19	22,2	187	36	150	125	25	16,9			
Dipl./cert. with Grade 12/Std 10	581	49	532	462	70	13,2	775	107	668	565	102	15,3	1 356	156	1 200	1 027	173	14,4			
Degree and higher	471	31	440	423	17	3,8	410	63	347	328	19	5,5	881	94	786	751	36	4,5			
Other	18	11	*	*	*	5,0	*	*	*	*	*	38,8	28	17	11	*	*	15,7			
Unspecified/ Don't know	71	20	50	39	12	23,0	63	27	36	28	*	23,2	134	47	87	67	20	23,1			

2. Estimated population of working age (15-65 years)

2.5 By highest level of education, gender and labour market status

2.5.1 Official definition of unemployment

2.5.1.2 Black African

	Male						Female						Total					
	Total	Not econom- ically active	Economically active				Total	Not econom- ically active	Economically active				Total	Not econom- ically active	Economically active			
			Total	Workers	Unem- ployed	Rate			Total	Workers	Unem- ployed	Rate			Total	Workers	Unem- ployed	Rate
Highest level of education	N (1 000)					%	N (1 000)					%	N (1 000)					%
Total	10 885	4 648	6 237	4 339	1 898	30,4	12 341	6 746	5 595	3 505	2 090	37,4	23 226	11 394	11 832	7 844	3 988	33,7
None	713	314	399	327	72	18,0	1 138	785	352	288	64	18,2	1 850	1 099	751	615	136	18,1
Grade 0 to Grade 3/ Std 1	519	224	295	224	71	23,9	569	333	236	181	55	23,5	1 088	557	531	405	126	23,7
Grade 4/Std 2	409	171	239	178	61	25,4	429	244	185	134	51	27,5	839	415	424	312	111	26,3
Grade 5/ Std 3	501	236	265	185	79	30,0	485	289	197	137	60	30,5	986	525	461	322	139	30,2
Grade 6/Std 4	721	356	365	265	100	27,4	697	411	285	196	89	31,2	1 418	768	650	461	189	29,1
Grade 7/Std 5	993	486	507	353	154	30,5	1 058	616	442	286	156	35,3	2 051	1 102	949	639	310	32,7
Grade 8/Std 6	1 211	627	584	408	176	30,1	1 293	788	506	316	189	37,4	2 504	1 415	1 089	724	365	33,5
Grade 9/Std 7	1 197	708	490	321	168	34,4	1 322	903	419	250	168	40,2	2 519	1 611	908	571	337	37,1
Grade 10/Std 8	1 174	544	630	431	199	31,6	1 304	803	501	287	214	42,7	2 477	1 347	1 131	718	413	36,5
Grade 11/Std 9	956	430	526	307	219	41,6	1 225	692	533	246	287	53,9	2 181	1 122	1 059	553	506	47,8
Grade 12/Std 10	1 855	473	1 381	887	495	35,8	2 019	755	1 264	648	616	48,8	3 874	1 229	2 645	1 534	1 111	42,0
NTC I - NTC III	58	14	44	28	16	36,6	42	18	24	15	*	37,1	100	32	67	43	25	36,8
Dipl./cert. with Grade 11/Std 9 or lower	43	*	36	30	*	15,6	72	13	59	41	17	29,4	115	21	94	71	23	24,2
Dipl./cert. with Grade 12/Std 10	311	26	285	225	60	21,0	467	57	410	320	90	21,9	778	83	695	545	150	21,5
Degree and higher	155	*	147	135	12	8,3	165	13	152	137	15	10,0	320	21	299	271	27	9,2
Other	*	*	*	*	*	12,4	*	*	*	*	*	59,5	14	*	*	*	*	32,5
Unspecified	61	18	43	32	11	25,2	51	21	31	23	*	25,4	112	39	74	55	19	25,3

* For all values of 10 000 or lower the sample size is too small for reliable estimates.

2. Estimated population of working age (15-65 years)**2.5 By highest level of education, gender and labour market status****2.5.1 Official definition of unemployment****2.5.1.3 Coloured**

	Male						Female						Total								
	Total	Not economy- cally active	Economically active				Total	Not economy- cally active	Economically active				Total	Not economy- cally active	Economically active						
			Total	Workers	Unem- ployed	Rate			Total	Workers	Unem- ployed	Rate			Total	Workers	Unem- ployed	Rate			
Highest level of education	N (1 000)						%	N (1 000)						%	N (1 000)						%
Total	1 301	386	914	729	186	20,3	1 508	658	850	656	194	22,9	2 809	1 044	1 764	1 384	380	21,5			
None	55	19	35	32	*	9,7	66	41	26	20	*	20,6	121	60	61	52	*	14,3			
Grade 0 to Grade 3/ Std 1	43	17	26	24	*	11,0	52	32	20	15	*	25,2	95	49	46	38	*	17,1			
Grade 4/Std 2	37	*	27	21	*	20,6	44	25	19	16	*	15,8	81	35	46	37	*	18,6			
Grade 5/ Std 3	42	12	30	26	*	12,5	62	30	32	28	*	12,1	104	42	62	54	*	12,3			
Grade 6/Std 4	71	28	43	34	*	21,9	84	38	45	34	11	25,3	155	66	88	67	21	23,6			
Grade 7/Std 5	123	44	79	60	19	24,6	139	75	64	48	17	25,8	263	120	143	107	36	25,1			
Grade 8/Std 6	168	68	100	79	21	21,1	197	112	85	59	26	30,2	365	180	185	138	47	25,3			
Grade 9/Std 7	157	58	99	67	31	31,9	174	92	82	58	24	29,2	331	150	181	125	55	30,7			
Grade 10/Std 8	169	52	117	86	31	26,2	190	86	104	74	30	28,5	359	138	221	161	60	27,3			
Grade 11/Std 9	90	33	57	45	12	21,8	98	46	52	38	14	26,4	187	78	109	83	26	24,0			
Grade 12/Std 10	238	29	209	170	38	18,4	307	62	245	193	52	21,4	546	92	454	363	91	20,0			
NTC I - NTC III	13	*	*	*	*	4,6	*	*	*	*	-	-	15	*	11	*	*	4,0			
Dipl./cert. with Grade 11/Std 9 or lower	*	*	*	*	-	-	11	*	*	*	*	11,1	16	*	14	13	*	7,2			
Dipl./cert. with Grade 12/Std 10	50	*	47	42	*	10,7	55	*	49	47	*	3,9	106	*	95	88	*	7,2			
Degree and higher	26	*	23	22	*	4,8	17	*	14	13	*	7,8	43	*	37	35	*	5,9			
Other	*	*	*	*	-	-	*	*	*	*	-	-	*	*	*	*	-	-			
Unspecified	*	*	*	*	*	10,5	*	*	*	*	-	-	16	*	*	*	*	7,0			

* For all values of 10 000 or lower the sample size is too small for reliable estimates.

2. Estimated population of working age (15-65 years)

2.5 By highest level of education, gender and labour market status

2.5.1 Official definition of unemployment

2.5.1.4 Indian/Asian

	Male						Female						Total					
	Total	Not economy- cally active	Economically active				Total	Not economy- cally active	Economically active				Total	Not economy- cally active	Economically active			
			Total	Workers	Unem- ployed	Rate			Total	Workers	Unem- ployed	Rate			Total	Workers	Unem- ployed	Rate
Highest level of education	N (1 000)					%	N (1 000)					%	N (1 000)					%
Total	454	112	342	288	54	15,7	466	242	223	182	42	18,7	920	354	566	470	96	16,9
None	*	*	*	*	-	-	*	*	*	*	-	-	*	*	*	*	-	-
Grade 0 to Grade 3/ Std 1	*	*	*	*	-	-	*	*	*	*	*	15,9	10	*	*	*	*	11,0
Grade 4/Std 2	*	*	*	-	*	100,0	*	*	-	-	-	-	*	*	*	-	*	100,0
Grade 5/ Std 3	*	*	*	*	-	-	*	*	*	*	*	59,2	10	*	*	*	*	39,0
Grade 6/Std 4	*	*	*	*	*	58,0	14	*	*	*	*	29,4	20	11	*	*	*	40,3
Grade 7/Std 5	*	*	*	*	*	8,6	25	17	*	*	*	22,0	34	22	12	*	*	17,0
Grade 8/Std 6	27	*	18	14	*	25,3	28	21	*	*	*	11,3	55	29	25	20	*	21,5
Grade 9/Std 7	31	11	21	15	*	27,9	31	21	*	*	*	40,2	63	32	31	21	*	31,9
Grade 10/Std 8	62	25	37	32	*	13,7	56	41	15	*	*	38,5	118	66	52	41	11	21,0
Grade 11/Std 9	46	15	31	24	*	23,2	42	32	*	*	*	35,0	88	47	41	30	11	26,1
Grade 12/Std 10	184	28	156	130	25	16,3	187	73	114	96	18	15,9	371	102	269	226	43	16,2
NTC I - NTC III	*	*	*	*	-	-	*	*	*	*	-	-	12	*	*	*	-	-
Dipl./cert. with Grade 11/Std 9 or lower	*	-	*	*	-	-	*	-	*	*	-	-	*	-	*	*	-	-
Dipl./cert. with Grade 12/Std 10	27	*	24	23	*	2,6	24	*	23	21	*	9,2	51	*	47	44	*	5,9
Degree and higher	35	*	32	31	*	3,8	27	*	23	21	*	9,9	62	*	55	52	*	6,4
Other	*	*	-	-	-	-	-	-	-	-	-	-	*	*	-	-	-	-
Unspecified	*	*	-	-	-	-	*	*	*	-	*	100,0	*	*	*	-	*	100,0

* For all values of 10 000 or lower the sample size is too small for reliable estimates.

2. Estimated population of working age (15-65 years)**2.5 By highest level of education, gender and labour market status****2.5.1 Official definition of unemployment****2.5.1.5 White**

	Male						Female						Total					
	Total	Not economy- cally active	Economically active				Total	Not economy- cally active	Economically active				Total	Not economy- cally active	Economically active			
			Total	Workers	Unem- ployed	Rate			Total	Workers	Unem- ployed	Rate			Total	Workers	Unem- ployed	Rate
Highest level of education	N (1 000)					%	N (1 000)					%	N (1 000)					%
Total	1 431	307	1 124	1 075	49	4,4	1 515	618	896	841	55	6,2	2 946	925	2 021	1 916	105	5,2
None	*	*	-	-	-	-	*	*	*	*	-	-	*	*	*	*	-	-
Grade 0 to Grade 3/ Std 1	-	-	-	-	-	-	*	*	*	*	-	-	*	*	*	*	-	-
Grade 4/Std 2	*	*	-	-	-	-	*	*	*	*	-	-	*	*	*	*	-	-
Grade 5/ Std 3	*	*	*	-	*	100,0	*	*	*	*	-	-	*	*	*	*	*	79,6
Grade 6/Std 4	*	*	*	*	-	-	*	*	*	*	-	-	*	*	*	*	-	-
Grade 7/Std 5	13	11	*	*	-	-	14	12	*	*	*	27,0	27	23	*	*	*	15,1
Grade 8/Std 6	45	32	13	*	*	19,0	44	36	*	*	*	9,3	89	68	21	18	*	15,2
Grade 9/Std 7	47	30	17	16	*	5,2	55	42	13	12	*	8,5	103	73	30	28	*	6,6
Grade 10/Std 8	154	49	105	96	*	8,7	193	120	73	61	12	16,6	347	169	178	157	21	12,0
Grade 11/Std 9	59	33	25	22	*	13,6	73	50	23	22	*	5,5	132	84	49	44	*	9,7
Grade 12/Std 10	570	98	473	449	24	5,1	642	248	395	368	26	6,7	1 213	345	867	817	51	5,8
NTC I - NTC III	66	12	55	54	*	1,3	21	*	16	13	*	18,4	87	17	71	67	*	5,2
Dipl./cert. with Grade 11/Std 9 or lower	23	*	18	18	*	3,4	26	*	17	16	*	5,8	49	14	36	34	*	4,5
Dipl./cert. with Grade 12/Std 10	190	15	174	170	*	2,6	228	42	186	178	*	4,7	418	57	361	348	13	3,6
Degree and higher	254	18	236	234	*	1,0	200	43	157	156	*	0,2	453	61	393	390	*	0,7
Other	*	*	*	*	-	-	*	*	*	*	-	-	*	*	*	*	-	-
Unspecified	*	-	*	*	-	-	*	*	*	*	-	-	*	*	*	*	-	-

* For all values of 10 000 or lower the sample size is too small for reliable estimates.

2. Estimated population of working age (15-65 years)

2.5 By highest level of education, gender and labour market status

2.5.2 Expanded definition of unemployment

2.5.2.1 All population groups

	Male						Female						Total					
	Total	Not economically active	Economically active				Total	Not economically active	Economically active				Total	Not economically active	Economically active			
			Total	Workers	Unem- ployed	Rate			Total	Workers	Unem- ployed	Rate			Total	Workers	Unem- ployed	Rate
Highest level of education	N (1 000)					%	N (1 000)					%	N (1 000)					%
Total	14 080	4 065	10 015	6 436	3 579	35,7	15 837	5 898	9 939	5 187	4 753	47,8	29 917	9 963	19 954	11 622	8 332	41,8
None	771	261	510	360	150	29,5	1 216	668	549	310	239	43,5	1 988	929	1 059	670	389	36,8
Grade 0 to Grade 3/ Std 1	567	161	406	249	157	38,7	628	266	362	198	164	175,6	1 195	427	768	448	321	173,6
Grade 4/Std 2	451	120	331	200	131	39,7	478	196	282	151	132	46,6	929	316	613	350	263	42,9
Grade 5/Std 3	546	167	379	212	167	44,0	558	234	324	166	158	48,8	1 104	401	703	378	325	46,2
Grade 6/Std 4	801	290	511	301	209	41,0	799	333	466	235	231	49,6	1 599	623	977	536	441	45,1
Grade 7/Std 5	1 139	423	716	418	298	41,6	1 237	514	723	341	382	52,8	2 376	937	1 439	759	680	47,2
Grade 8/Std 6	1 450	587	863	511	352	40,8	1 562	733	829	389	440	53,1	3 013	1 320	1 692	900	792	46,8
Grade 9/Std 7	1 433	676	757	420	337	44,5	1 583	809	773	326	447	57,8	3 016	1 486	1 530	746	784	51,2
Grade 10/Std 8	1 560	534	1 026	646	380	37,1	1 743	787	957	431	525	54,9	3 303	1 320	1 983	1 077	906	45,7
Grade 11/Std 9	1 151	379	772	397	375	48,5	1 438	524	914	313	601	65,8	2 589	903	1 686	710	976	57,9
Grade 12/Std 10	2 848	344	2 504	1 636	868	34,7	3 159	649	2 510	1 306	1 204	48,0	6 007	992	5 014	2 942	2 073	41,3
NTC I - NTC III	147	25	122	98	23	19,1	67	19	48	30	18	36,7	214	44	170	129	41	24,1
Dipl./cert. with Grade 11/Std 9 or lower	76	*	67	58	*	13,8	111	19	92	67	24	26,6	187	28	159	125	34	21,2
Dipl./cert. with Grade 12/Std 10	581	37	544	462	83	15,2	775	71	704	565	139	19,7	1 356	107	1 249	1 027	222	17,8
Degree and higher	471	28	442	423	19	4,4	410	55	355	328	28	7,8	881	83	798	751	47	5,9
Other	18	*	*	*	*	16,8	*	*	*	*	*	50,7	28	16	13	*	*	28,1
Unspecified	71	14	57	39	18	31,4	63	17	46	28	18	39,0	134	31	102	67	36	34,8

* For all values of 10 000 or lower the sample size is too small for reliable estimates.

2. Estimated population of working age (15-65 years)

2.5 By highest level of education, gender and labour market status

2.5.2 Expanded definition of unemployment

2.5.2.2 Black African

	Male						Female						Total					
	Total	Not economy- cally active	Economically active				Total	Not economy- cally active	Economically active				Total	Not economy- cally active	Economically active			
			Total	Workers	Unem- ployed	Rate			Total	Workers	Unem- ployed	Rate			Total	Workers	Unem- ployed	Rate
Highest level of education	N (1 000)					%	N (1 000)					%	N (1 000)					%
Total	10 885	3 353	7 532	4 339	3 193	42,4	12 341	4 556	7 785	3 505	4 280	55,0	23 226	7 910	15 317	7 844	7 472	48,8
None	713	239	474	327	147	31,0	1 138	621	516	288	228	44,2	1 850	860	990	615	375	37,9
Grade 0 to Grade 3/ Std 1	519	144	375	224	151	40,2	569	234	335	181	154	46,1	1 088	378	710	405	305	43,0
Grade 4/Std 2	409	109	300	178	122	40,7	429	172	257	134	123	47,9	839	281	558	312	245	44,0
Grade 5/Std 3	501	156	345	185	160	46,3	485	202	283	137	146	51,7	986	358	628	322	306	48,7
Grade 6/Std 4	721	267	454	265	189	41,7	697	287	409	196	213	52,0	1 418	554	863	461	402	46,6
Grade 7/Std 5	993	372	620	353	268	43,2	1 058	425	633	286	346	54,8	2 051	798	1 253	639	614	49,0
Grade 8/Std 6	1 211	498	713	408	305	42,8	1 293	588	705	316	389	55,1	2 504	1 086	1 418	724	694	48,9
Grade 9/Std 7	1 197	587	610	321	289	47,4	1 322	676	646	250	396	61,3	2 519	1 263	1 256	571	685	54,5
Grade 10/Std 8	1 174	418	755	431	324	42,9	1 304	566	737	287	450	61,1	2 477	984	1 493	718	775	51,9
Grade 11/Std 9	956	303	653	307	346	53,0	1 225	410	815	246	569	69,8	2 181	713	1 468	553	916	62,4
Grade 12/Std 10	1 855	209	1 646	887	759	46,1	2 019	304	1 715	648	1 068	62,2	3 874	513	3 361	1 534	1 827	54,4
NTC I - NTC III	58	*	48	28	20	42,1	42	12	29	15	14	49,2	100	22	77	43	35	44,8
Dipl./cert. with Grade 11/Std 9 or lower	43	*	39	30	*	22,2	72	*	64	41	22	35,2	115	13	102	71	31	30,3
Dipl./cert. with Grade 12/Std 10	311	15	296	225	71	24,0	467	25	442	320	122	27,5	778	40	738	545	193	26,1
Degree and higher	155	*	148	135	14	9,2	165	*	156	137	20	12,5	320	15	304	271	33	10,9
Other	*	*	*	*	*	35,2	*	*	*	*	*	67,9	14	*	*	*	*	48,5
Unspecified	61	12	49	32	17	34,6	51	12	39	23	16	41,4	112	24	88	55	33	37,6

* For all values of 10 000 or lower the sample size is too small for reliable estimates.

2. Estimated population of working age (15-65 years)

2.5 By highest level of education, gender and labour market status

2.5.2 Expanded definition of unemployment

2.5.2.3 Coloured

	Male						Female						Total					
	Total	Not economy- cally active	Economically active				Total	Not economy- cally active	Economically active				Total	Not economy- cally active	Economically active			
			Total	Workers	Unem- ployed	Rate			Total	Workers	Unem- ployed	Rate			Total	Workers	Unem- ployed	Rate
Highest level of education	N (1 000)					%	N (1 000)					%	N (1 000)					%
Total	1 301	316	985	729	256	26,0	1 508	531	977	656	321	32,9	2 809	847	1 961	1 384	577	29,4
None	55	19	35	32	*	10,0	66	36	30	20	*	33,3	121	55	66	52	14	20,8
Grade 0 to Grade 3/ Std 1	43	14	30	24	*	20,9	52	28	24	15	*	37,0	95	42	53	38	15	28,0
Grade 4/Std 2	37	*	29	21	*	25,1	44	20	24	16	*	34,4	81	28	53	37	16	29,4
Grade 5/Std 3	42	*	32	26	*	18,9	62	23	38	28	*	26,9	104	33	71	54	16	23,3
Grade 6/Std 4	71	20	51	34	18	34,5	84	33	50	34	17	33,1	155	53	102	67	34	33,8
Grade 7/Std 5	123	35	88	60	28	32,3	139	59	80	48	33	40,7	263	94	168	107	61	36,3
Grade 8/Std 6	168	53	115	79	36	31,1	197	90	107	59	48	44,7	365	143	222	138	83	37,7
Grade 9/Std 7	157	51	106	67	39	36,6	174	75	99	58	41	41,2	331	126	205	125	79	38,8
Grade 10/Std 8	169	43	125	86	39	31,1	190	69	122	74	47	38,8	359	112	247	161	86	34,9
Grade 11/Std 9	90	29	61	45	17	26,9	98	36	62	38	23	37,8	187	65	123	83	40	32,4
Grade 12/Std 10	238	19	219	170	49	22,3	307	44	263	193	70	26,7	546	64	482	363	119	24,7
NTC I - NTC III	11	16	*	*	*	20,7	*	*	*	*	*	15,7	13	*	11	*	*	20,1
Dipl./cert. with Grade 11/Std 9 or lower	*	*	*	*	-	-	11	*	*	*	*	11,1	16	*	14	13	*	7,2
Dipl./cert. with Grade 12/Std 10	50	*	47	42	*	11,4	55	*	49	47	*	4,2	106	*	96	88	*	7,7
Degree and higher	26	*	23	22	*	4,8	17	*	14	13	*	7,8	43	*	37	35	*	5,9
Other	*	*	*	*	-	-	*	*	*	*	-	-	*	*	*	*	-	-
Unspecified	*	*	*	*	*	10,5	*	*	*	*	*	25,2	16	*	11	*	*	16,3

* For all values of 10 000 or lower the sample size is too small for reliable estimates.

2. Estimated population of working age (15-65 years)**2.5 By highest level of education, gender and labour market status****2.5.2 Expanded definition of unemployment****2.5.2.4 Indian/Asian**

	Male						Female						Total					
	Total	Not economy- cally active	Economically active				Total	Not economy- cally active	Economically active				Total	Not economy- cally active	Economically active			
			Total	Workers	Unem- ployed	Rate			Total	Workers	Unem- ployed	Rate			Total	Workers	Unem- ployed	Rate
Highest level of education	N (1 000)					%	N (1 000)					%	N (1 000)					%
Total	454	104	351	288	62	17,8	466	224	242	182	60	24,9	920	327	592	470	122	20,7
None	*	*	*	*	-	-	*	*	*	*	*	40,1	*	*	*	*	*	23,8
Grade 0 to Grade 3/ Std 1	*	*	*	*	-	-	*	*	*	*	*	15,9	*	*	*	*	*	11,0
Grade 4/Std 2	*	*	*	-	*	100,0	*	*	-	-	-	-	*	*	*	-	*	100,0
Grade 5/Std 3	*	*	*	*	-	-	*	*	*	*	*	74,1	*	*	*	*	*	55,8
Grade 6/Std 4	*	*	*	*	*	58,0	14	*	*	*	*	29,4	20	11	*	*	*	40,3
Grade 7/Std 5	*	*	*	*	*	29,8	25	17	*	*	*	27,8	34	20	14	*	*	28,7
Grade 8/Std 6	27	*	20	14	*	32,7	28	20	*	*	*	19,3	55	27	28	20	*	29,1
Grade 9/Std 7	31	*	22	15	*	31,0	31	18	13	*	*	55,3	63	28	35	21	14	40,2
Grade 10/Std 8	62	24	38	32	*	16,3	56	38	18	*	*	48,4	118	62	56	41	15	26,7
Grade 11/Std 9	46	14	32	24	*	25,9	42	29	13	*	*	48,3	88	44	45	30	14	32,4
Grade 12/Std 10	184	26	157	130	27	17,3	187	67	120	96	25	20,5	371	93	278	226	52	18,7
NTC I - NTC III	*	*	*	*	-	-	*	*	*	*	*	23,3	12	*	*	*	*	4,1
Dipl./cert. with Grade 11/Std 9 or lower	*	-	*	*	-	-	*	-	*	*	-	-	*	-	*	*	-	-
Dipl./cert. with Grade 12/Std 10	27	*	24	23	*	2,6	24	*	23	21	*	9,2	51	*	47	44	*	5,9
Degree and higher	35	*	32	31	*	3,8	27	*	23	21	*	10,5	62	*	55	52	*	6,7
Other	*	*	-	-	-	-	-	-	-	-	-	-	*	*	-	-	-	-
Unspecified	*	*	-	-	-	-	*	*	*	-	*	100,0	*	*	*	-	*	100,0

* For all values of 10 000 or lower the sample size is too small for reliable estimates.

2. Estimated population of working age (15-65 years)**2.5 By highest level of education, gender and labour market status****2.5.2 Expanded definition of unemployment****2.5.2.5 White**

	Male						Female						Total								
	Total	Not economy- cally active	Economically active				Total	Not economy- cally active	Economically active				Total	Not economy- cally active	Economically active						
			Total	Workers	Unem- ployed	Rate			Total	Workers	Unem- ployed	Rate			Total	Workers	Unem- ployed	Rate			
Highest level of education	N (1 000)						%	N (1 000)						%	N (1 000)						%
Total	1 431	289	1 142	1 075	67	5,9	1 515	583	931	841	90	9,7	2 946	872	2 074	1 916	157	7,6			
None	*	*	-	-	-	-	*	*	*	*	-	-	*	*	*	*	-	-			
Grade 0 to Grade 3/ Std 1	-	-	-	-	-	-	*	*	*	*	-	-	*	*	*	*	-	-			
Grade 4/Std 2	*	*	-	-	-	-	*	*	*	*	-	-	*	*	*	*	-	-			
Grade 5/Std 3	*	*	*	-	*	100,0	*	*	*	*	-	-	*	*	*	*	*	79,6			
Grade 6/Std 4	*	*	*	*	-	-	*	*	*	*	-	-	*	*	*	*	-	-			
Grade 7/Std 5	13	11	*	*	-	-	14	12	*	*	*	27,0	27	23	*	*	*	15,1			
Grade 8/Std 6	45	30	15	*	*	30,1	44	34	*	*	*	23,5	89	64	25	18	*	27,5			
Grade 9/Std 7	47	29	18	16	*	11,4	55	40	15	12	*	22,2	103	69	34	28	*	16,3			
Grade 10/Std 8	154	47	107	96	11	10,2	193	113	80	61	19	23,7	347	160	187	157	30	16,0			
Grade 11/Std 9	59	33	26	22	*	14,7	73	49	24	22	*	10,2	132	82	50	44	*	12,5			
Grade 12/Std 10	570	89	482	449	33	6,9	642	233	409	368	41	10,0	1 213	322	891	817	74	8,3			
NTC I - NTC III	66	*	56	54	*	3,6	21	*	16	13	*	18,4	87	16	72	67	*	6,9			
Dipl./cert. with Grade 11/Std 9 or lower	23	*	18	18	*	3,4	26	*	17	16	*	5,8	49	14	36	34	*	4,5			
Dipl./cert. with Grade 12/Std 10	190	14	176	170	*	3,2	228	37	191	178	13	6,8	418	51	366	348	19	5,1			
Degree and higher	254	17	237	234	*	1,5	200	39	161	156	*	2,7	453	55	398	390	*	2,0			
Other	*	*	*	*	-	-	*	*	*	*	*	24,3	*	*	*	*	*	6,1			
Unspecified/ Don't know	*	-	*	*	-	-	*	*	*	*	-	-	*	*	*	*	-	-			

* For all values of 10 000 or lower the sample size is too small for reliable estimates.

2. Estimated population of working age (15-65 years)

2.6 By definition of unemployment, work-related skills training, gender and labour market status

Definition of unemployment and whether work-related skills training had been received	Male						Female						Total					
	Total	Not economically active	Economically active				Total	Not economically active	Economically active				Total	Not economically active	Economically active			
			Total	Workers	Unemployed	Rate			Total	Workers	Unemployed	Rate			Total	Workers	Unemployed	Rate
	N (1 000)				%	N (1 000)				%	N (1 000)				%			
Official definition of unemployment																		
Total	14 080	5 457	8 623	6 436	2 187	25,4	15 837	8 268	7 569	5 187	2 382	31,5	29 917	13 725	16 192	11 622	4 570	28,2
Yes	1 467	173	1 293	1 075	218	16,9	1 146	246	900	690	210	23,3	2 612	419	2 193	1 765	428	19,5
No	12 555	5 257	7 298	5 344	1 954	26,8	14 625	7 992	6 633	4 476	2 157	32,5	27 180	13 249	13 931	9 820	4 111	29,5
Don't know	54	23	30	16	14	47,2	61	27	33	20	13	40,0	115	51	64	36	28	43,4
Unspecified	*	*	*	*	*	44,3	*	*	*	-	*	100,0	*	*	*	*	*	78,7
Expanded definition of unemployment																		
Total	14 080	4 065	10 015	6 436	3 579	35,7	15 837	5 898	9 939	5 187	4 753	47,8	29 917	9 963	19 954	11 622	8 332	41,8
Yes	1 467	102	1 364	1 075	289	21,2	1 146	150	996	690	305	30,7	2 612	252	2 360	1 765	595	25,2
No	12 555	3 940	8 615	5 344	3 271	38,0	14 625	5 723	8 902	4 476	4 426	49,7	27 180	9 663	17 517	9 820	7 697	43,9
Don't know	54	20	33	16	17	52,0	61	22	39	20	18	47,9	115	43	72	36	36	49,8
Unspecified	*	*	*	*	*	54,8	*	*	*	-	*	100,0	*	*	*	*	*	81,5

* For all values of 10 000 or lower the sample size is too small for reliable estimates.

Totals include unspecified gender.

3. Workers (employers, employees and self-employed)

3.1 By main industry and sector

1 000

Main industry	Formal	Informal	Domestic	Unspecified	Total
Total	8 293	2 249	1 022	58	11 622
Agriculture, hunting, forestry and fishing	832	350	-	15	1 197
Mining and quarrying	500	*	-	-	503
Manufacturing	1 432	198	-	*	1 634
Electricity, gas and water supply	84	*	-	-	86
Construction	360	259	-	*	626
Wholesale and retail trade	1 532	909	-	*	2 451
Transport, storage and communication	438	120	-	*	563
Financial intermediation, insurance, real estate and business services	1 000	74	-	*	1 079
Community, social and personal services	2 082	176	-	*	2 265
Private households with employed persons	*	155	1 022	*	1 185
Other	18	*	-	*	23
Unspecified	*	-	-	*	11

* For all values of 10 000 or lower the sample size is too small for reliable estimates.

Due to rounding numbers do not necessarily add up to totals.

3. Workers (employers, employees and self-employed)

3.2 By main occupation and sector

1 000

Main occupation	Formal	Informal	Domestic	Unspecified	Total
Total	8 293	2 249	1 022	58	11 622
Legislators, senior officials and managers	698	86	-	*	786
Professionals	493	23	-	*	521
Technical and associate professionals	1 097	93	-	*	1 192
Clerks	1 169	28	-	*	1 201
Service workers and shop and market sales workers	1 056	305	-	*	1 367
Skilled agricultural and fishery workers	74	254	-	*	331
Craft and related trades workers	976	462	-	*	1 445
Plant and machine operators and assemblers	1 051	104	-	*	1 163
Elementary occupation	1 664	893	-	16	2 574
Domestic workers	-	-	1 022	-	1 022
Other	11	*	-	*	12
Unspecified	*	-	-	*	*

* For all values of 10 000 or lower the sample size is too small for reliable estimates.

Due to rounding numbers do not necessarily add up to totals.

3. Workers (employers, employees and self-employed)

3.3 By population group, gender and sector

1 000

Population group and sex	Formal	Informal	Domestic	Unspecified\ Don't know	Total
All population groups					
Total	8 293	2 249	1 022	58	11 622
Male	5 093	1 263	45	35	6 436
Female	3 200	986	977	23	5 187
Black African					
Total	4 873	2 004	925	43	7 844
Male	3 154	1 114	44	27	4 339
Female	1 719	889	881	16	3 505
Coloured					
Total	1 196	92	94	*	1 384
Male	666	60	*	*	729
Female	530	32	93	*	656
Indian/Asian					
Total	432	36	*	*	470
Male	261	27	-	*	288
Female	172	*	*	-	182
White					
Total	1 788	115	*	11	1 916
Male	1 010	60	-	*	1 075
Female	778	55	*	*	841

* For all values of 10 000 or lower the sample size is too small for reliable estimates.

Totals include other and unspecified population groups.

Due to rounding numbers do not necessarily add up to totals.

3. Workers (employers, employees and self-employed)**3.4 By main industry, population group and gender****3.4.1 All sectors**

1 000

Main industry	Black African			Coloured			Indian/Asian			White			Total		
	Total	Male	Female	Total	Male	Female	Total	Male	Female	Total	Male	Female	Total	Male	Female
Total	7 844	4 339	3 505	1 384	729	656	470	288	182	1 916	1 075	841	11 622	6 436	5 187
Agriculture, hunting, forestry and fishing	886	596	290	218	146	72	*	*	-	91	67	24	1 197	811	386
Mining and quarrying	422	408	14	*	*	*	*	*	-	74	63	10	503	478	25
Manufacturing	934	618	316	270	148	122	122	80	42	307	203	104	1 634	1 050	584
Electricity, gas and water supply	56	43	12	*	*	*	*	*	*	19	14	*	86	67	19
Construction	471	413	58	83	78	*	*	*	*	62	50	12	626	550	76
Wholesale and retail trade	1 683	785	898	263	119	145	143	93	50	358	209	149	2 451	1 209	1 242
Transport, storage and communication	362	303	59	61	48	13	23	17	*	116	73	44	563	442	121
Financial intermediation, insurance, real estate and business services	487	316	170	113	53	60	76	39	37	403	220	184	1 079	628	451
Community, social and personal services	1 457	665	792	251	110	141	89	46	43	465	166	299	2 265	988	1 277
Private households with employed persons	1 072	183	890	107	11	96	*	-	*	*	*	*	1 185	194	991
Exterior organisations and foreign governments	*	*	*	-	-	-	-	-	-	*	-	*	*	*	*
Other	*	*	*	*	*	*	*	-	*	*	*	*	19	11	*
Unspecified	*	*	*	-	-	-	-	-	-	*	*	*	11	*	*

* For values of 10 000 or lower the sample size is too small for reliable estimates.

Totals include other and unspecified population groups.

Due to rounding numbers do not necessarily add up to totals.

3. Workers (employers, employees and self-employed)

3.4 By main industry, population group and gender

3.4.2 Formal sector

1 000

Main industry	Black African			Coloured			Indian/Asian			White			Total		
	Total	Male	Female	Total	Male	Female	Total	Male	Female	Total	Male	Female	Total	Male	Female
Total	4 873	3 154	1 719	1 196	666	530	432	261	172	1 788	1 010	778	8 293	5 093	3 200
Agriculture, hunting, forestry and fishing	537	382	155	213	141	72	*	*	-	80	58	22	832	583	249
Mining and quarrying	420	406	14	*	*	*	*	*	-	74	63	*	500	476	25
Manufacturing	771	544	226	258	145	113	114	75	39	288	195	93	1 432	959	473
Electricity, gas and water supply	55	43	12	*	*	*	*	*	*	19	14	*	84	66	19
Construction	237	212	25	64	60	*	*	*	*	53	42	11	360	319	41
Wholesale and retail trade	842	471	370	232	101	131	125	78	47	332	190	141	1 532	842	690
Transport, storage and communication	247	197	50	57	45	12	23	17	*	112	71	41	438	330	109
Financial intermediation, insurance, real estate and business services	441	289	152	109	50	59	73	38	36	377	207	169	1 000	583	416
Community, social and personal services	1 309	600	709	244	109	135	87	45	42	441	160	280	2 082	915	1 167
Private households with employed persons	*	*	*	*	*	*	-	-	-	-	-	-	*	*	*
Exterior organisations and foreign governments	*	*	*	-	-	-	-	-	-	*	-	*	*	*	*
Other	*	*	*	*	*	*	-	-	-	*	*	*	15	*	*
Unspecified	*	*	*	-	-	-	-	-	-	*	*	*	*	*	*

* For values of 10 000 or lower the sample size is too small for reliable estimates.

Totals include other and unspecified population groups.

Due to rounding numbers do not necessarily add up to totals.

3. Workers (employers, employees and self-employed)

3.4 By main industry, population group and gender

3.4.3 Informal sector

1 000

Main industry	Black African			Coloured			Indian/Asian			White			Total		
	Total	Male	Female	Total	Male	Female	Total	Male	Female	Total	Male	Female	Total	Male	Female
Total	2 004	1 114	889	92	60	32	36	27	*	115	60	55	2 249	1 263	986
Agriculture, hunting, forestry and fishing	334	205	129	*	*	*	*	*	-	11	*	*	350	219	132
Mining and quarrying	*	*	*	-	-	-	-	-	-	-	-	-	*	*	*
Manufacturing	160	71	88	11	*	*	*	*	*	19	*	*	198	89	110
Electricity, gas and water supply	*	*	*	-	-	-	*	*	-	-	-	-	*	*	*
Construction	228	197	32	19	18	*	*	*	-	*	*	*	259	225	33
Wholesale and retail trade	836	312	524	30	17	13	18	15	*	24	18	*	909	362	547
Transport, storage and communication	111	102	*	*	*	*	*	*	-	*	*	*	120	108	12
Financial intermediation, insurance, real estate and business services	44	27	17	*	*	*	*	*	*	23	11	13	74	43	31
Community, social and personal services	144	63	81	*	*	*	*	*	*	22	*	17	176	70	106
Private households with employed persons	141	133	*	11	*	*	*	-	*	*	*	*	155	142	13
Other	*	*	*	-	-	-	*	-	*	-	-	-	*	*	*

* For values of 10 000 or lower the sample size is too small for reliable estimates.

Totals include other and unspecified population groups.

Due to rounding numbers do not necessarily add up to totals.

3. Workers (employers, employees and self-employed)

3.5 By monthly income and sector

1 000

Monthly income	Formal	Informal	Domestic	Unspecified\ Don't know	Total
Total	8 293	2 249	1 022	58	11 622
None	42	317	*	*	362
R1 - R500	455	839	484	12	1 790
R501 - R1 000	1 198	472	428	12	2 109
R1 001 - R2 500	2 288	349	89	*	2 736
R2 501 - R8 000	2 667	130	*	*	2 804
R8 001+	784	32	*	*	818
Don't know/Refused	852	106	13	*	980
Unspecified	*	*	*	*	22

* For all values of 10 000 or lower the sample size is too small for reliable estimates.

3. Workers (employees, employers and self-employed)

3.6 By highest level of education and sector

1 000

Highest educational level	Formal	Informal	Domestic	Unspecified\ Don't know	Total
Total	8 293	2 249	1 022	58	11 622
None	305	234	128	*	670
Grade 0 to Grade 3/ Std 1	214	148	84	*	448
Grade 4/ Std 2	175	113	59	*	350
Grade 5/ Std 3	183	118	76	*	378
Grade 6/ Std 4	290	149	93	*	536
Grade 7/ Std 5	406	225	124	*	759
Grade 8/ Std 6	526	235	134	*	900
Grade 9/ Std 7	463	194	85	*	746
Grade 10/ Std 8	767	221	85	*	1 077
Grade 11/ Std 9	482	168	52	*	710
Grade 12/ Std 10	2 513	327	87	13	2 942
NTC I - NTC III	119	*	*	-	129
Dipl./cert. with Grade 11/ Std 9 or lower	113	11	*	-	125
Dipl./cert. with Grade 12/ Std 10	973	49	*	*	1 027
Degree and higher	709	35	*	*	751
Other	*	*	*	-	*
Unspecified	45	12	*	*	67

* For all values of 10 000 or lower the sample size is too small for reliable estimates.

Due to rounding numbers do not necessarily add up to totals.

3. Workers (employers, employees and self-employed)**3.7 By highest level of education and monthly income****3.7.1 All population groups**

1 000

Highest level of education	None	R1 - R500	R501 - R1 000	R1 001 - R2 500	R2 501 - R8 000	R8 001 or more	Unspecified	Total
Total	362	1 790	2 109	2 736	2 804	818	1 002	11 622
None	49	254	211	116	30	*	*	670
Grade 0 to Grade 3/ Std 1	28	161	132	89	30	*	*	448
Grade 4/ Std 2	17	117	104	77	24	*	*	350
Grade 5/ Std 3	23	125	112	85	27	*	*	378
Grade 6/ Std 4	24	155	168	134	41	*	11	536
Grade 7/ Std 5	29	186	233	222	66	*	22	759
Grade 8/ Std 6	30	175	234	305	116	*	35	900
Grade 9/ Std 7	31	147	177	255	99	*	32	746
Grade 10/ Std 8	30	144	200	329	261	30	83	1 077
Grade 11/ Std 9	25	114	160	230	119	17	46	710
Grade 12/ Std 10	57	175	322	716	1 037	239	396	2 942
NTC I - NTC III	*	*	*	20	50	25	27	129
Dipl./cert. with Grade 11/ Std 9 or lower	*	*	*	15	62	19	20	125
Dipl./cert. with Grade 12/ Std 10	12	18	22	96	570	174	135	1 027
Degree and higher	*	*	*	27	260	296	151	751
Other	-	*	*	*	*	*	*	*
Unspecified	*	*	17	19	*	*	11	67

* For all values of 10 000 or lower the sample size is too small for reliable estimates.

Due to rounding numbers do not necessarily add up to totals.

3. Workers (employers, employees and self-employed)

3.7 By highest level of education and monthly income

3.7.2 Black African

1 000

Highest level of education	None	R1 - R500	R501 - R1 000	R1 001 - R2 500	R2 501 - R8 000	R8 001 or more	Unspecified	Total
Total	331	1 660	1 773	2 067	1 479	208	326	7 844
None	48	240	184	108	28	*	*	615
Grade 0 to Grade 3/ Std 1	28	151	116	77	27	*	*	405
Grade 4/ Std 2	17	109	87	70	20	*	*	312
Grade 5/ Std 3	23	113	89	70	23	*	*	322
Grade 6/ Std 4	24	147	135	112	34	*	*	461
Grade 7/ Std 5	28	173	195	175	51	*	16	639
Grade 8/ Std 6	29	160	194	240	80	*	19	724
Grade 9/ Std 7	30	135	147	191	53	*	14	571
Grade 10/ Std 8	26	133	174	237	114	*	31	718
Grade 11/ Std 9	25	109	142	177	69	*	27	553
Grade 12/ Std 10	42	157	267	495	435	33	105	1 534
NTC I - NTC III	*	*	*	13	16	*	*	43
Dipl./cert. with Grade 11/ Std 9 or lower	*	*	*	11	38	*	*	71
Dipl./cert. with Grade 12/ Std 10	*	16	19	64	354	53	33	545
Degree and higher	*	*	*	12	128	95	28	271
Other	-	*	*	*	*	-	-	*
Unspecified	*	*	14	15	*	*	*	55

* For all values of 10 000 or lower the sample size is too small for reliable estimates.

Due to rounding numbers do not necessarily add up to totals.

3. Workers (employers, employees and self-employed)

3.7 By highest level of education and monthly income

3.7.3 Other¹

1 000

Highest level of education	None	R1 - R500	R501 - R1 000	R1 001 - R2 500	R2 501 - R8 000	R8 001 or more	Unspecified	Total
Total	31	129	337	670	1 325	610	676	3 778
None	*	14	27	*	*	*	*	54
Grade 0 to Grade 3/ Std 1	-	*	16	12	*	-	*	43
Grade 4/ Std 2	-	*	17	*	*	-	*	38
Grade 5/ Std 3	-	12	23	15	*	-	*	56
Grade 6/ Std 4	-	*	33	22	*	*	*	75
Grade 7/ Std 5	*	14	38	47	15	*	*	120
Grade 8/ Std 6	*	16	41	65	36	*	16	176
Grade 9/ Std 7	*	12	30	64	46	*	18	175
Grade 10/ Std 8	*	*	26	92	147	28	52	359
Grade 11/ Std 9	-	*	18	53	49	13	19	157
Grade 12/ Std 10	15	18	55	221	601	205	292	1 407
NTC I - NTC III	-	*	*	*	34	22	22	86
Dipl./cert. with Grade 11/ Std 9 or lower	-	*	*	*	24	12	11	54
Dipl./cert. with Grade 12/ Std 10	*	*	*	32	216	122	101	482
Degree and higher	*	*	*	15	132	201	123	479
Other	-	*	-	*	*	*	*	*
Unspecified	-	*	*	*	*	-	*	12

* For all values of 10 000 or lower the sample size is too small for reliable estimates.

¹ Other includes coloured, Indian/Asian, white and unspecified population groups. These groups are aggregated due to the small sample size.

Due to rounding numbers do not necessarily add up to totals.

3. Workers (employers, employees and self-employed)**3.8 Workers with degrees, diplomas and certificates by field of study and monthly income**

1 000

Field of study	None	R1 - R500	R501 - R1 000	R1 001 - R2 500	R2 501 - R8 000	R8 001 or more	Unspecified	Total
Total	17	25	34	138	893	489	306	1 903
Communication studies and languages	-	-	*	*	23	*	*	44
Education, training and development	*	*	11	32	366	76	42	539
Manufacturing, engineering and technology	*	*	*	14	68	74	40	202
Human and social studies	*	*	*	*	28	20	11	68
Law, military science and security	*	*	-	*	40	38	26	115
Health sciences and social services	*	*	*	12	108	66	44	232
Agriculture and nature conservation	*	-	*	*	15	13	*	46
Culture and arts	-	*	-	*	16	*	*	35
Business, commerce and management studies	*	*	*	29	143	129	74	395
Physical, mathematical, computer and life sciences	*	*	*	*	38	32	17	107
Services	*	*	-	10	12	*	11	41
Physical planning and construction	-	-	-	*	*	*	*	16
Don't know	-	-	-	-	*	-	*	*
Unspecified	-	*	*	*	26	15	11	57

* For all values of 10 000 or lower the sample size is too small for reliable estimates.

Due to rounding numbers do not necessarily add up to totals.

3. Workers (employers, employees and self-employed)

3.9 By main industry and monthly income

1 000

Main industry	None	R1 - R500	R501 - R1 000	R1 001 - R2 500	R2 501 - R8 000	R8 001 or more	Unspecified	Total
Total	362	1 790	2 109	2 736	2 804	818	1 002	11 622
Agriculture, hunting, forestry and fishing	222	260	487	118	44	23	43	1 197
Mining and quarrying	-	*	31	254	147	43	24	503
Manufacturing	13	119	217	552	452	124	158	1 634
Electricity, gas and water supply	-	*	*	20	31	19	*	86
Construction	42	97	137	199	89	25	37	626
Wholesale and retail trade	67	566	488	651	381	88	211	2 451
Transport, storage and communication	*	29	52	170	184	53	71	563
Financial intermediation, insurance, real estate and business services	*	35	83	286	307	189	178	1 079
Community, social and personal services	11	112	122	379	1 156	249	234	2 265
Private households with employed persons	*	565	488	104	*	*	21	1 185
Exterior organisations and foreign governments	-	-	-	*	-	*	*	*
Other	-	*	*	*	*	*	*	19
Unspecified	-	-	-	-	*	*	*	11

* For all values of 10 000 or lower the sample size is too small for reliable estimates.

Due to rounding numbers do not necessarily add up to totals.

3. Workers (employers, employees and self-employed)

3.10 By main occupation and monthly income

1 000

Main occupation	None	R1 - R500	R501 - R1 000	R1 001 - R2 500	R2 501 - R8 000	R8 001 or more	Unspecified	Total
Total	362	1 790	2 109	2 736	2 804	818	1 002	11 622
Legislators, senior officials and managers	*	12	15	58	239	280	173	786
Professionals	*	*	*	31	189	189	98	521
Technical and associate professionals	*	45	43	121	683	157	141	1 192
Clerks	13	35	87	274	565	51	176	1 201
Service workers and shop and market sales workers	30	208	231	434	307	40	118	1 367
Skilled agricultural and fishery workers	212	34	23	19	17	*	16	331
Craft and related trades workers	50	170	241	498	315	66	105	1 445
Plant and machine operators and assemblers	*	55	199	536	297	14	58	1 163
Elementary occupation	36	741	831	674	183	13	97	2 574
Domestic workers	*	484	428	89	*	*	15	1 022
Occupation not adequately defined	-	*	*	*	*	*	*	12
Unspecified	-	-	-	-	*	*	*	*

* For all values of 10 000 or lower the sample size is too small for reliable estimates.

Due to rounding numbers do not necessarily add up to totals.

3. Workers (employers, employees and self-employed)

3.11 By employment status

3.11.1 By sector and gender

1 000					
Employment status	Formal	Informal	Domestic worker	Unspecified	Total
RSA					
Total	8 293	2 249	1 022	58	11 622
Working for someone else	7 737	530	36	42	8 344
Working for one or more private households as a domestic employee, gardener or security guard	13	165	985	*	1 164
Working on his/her own small farm/plot or collecting natural products from the forest or sea	*	261	-	*	269
Working on his/her own or with a partner, in any type of business (including commercial farms)	506	1 234	*	*	1 750
Helping without pay in a family business	33	59	-	-	92
Unspecified	-	-	-	*	*
Male					
Total	5 093	1 263	45	35	6 436
Working for someone else	4 689	378	*	27	5 098
Working for one or more private households as a domestic employee, gardener or security guard	*	151	42	*	204
Working on his/her own small farm/plot or collecting natural products from the forest or sea	*	142	-	*	148
Working on his/her own or with a partner, in any type of business (including commercial farms)	378	570	-	*	953
Helping without pay in a family business	12	21	-	-	33
Unspecified	-	-	-	*	*

3. Workers (employers, employees and self-employed)

3.11 By employment status

3.11.1 By sector and gender (concluded)

1 000

Employment status	Formal	Informal	Domestic worker	Unspecified	Total
Female					
Total	3 200	986	977	23	5 187
Working for someone else	3 048	152	33	15	3 247
Working for one or more private households as a domestic employee, gardener or security guard	*	14	943	-	960
Working on his/her own small farm/plot or collecting natural products from the forest or sea	*	119	-	*	121
Working on his/her own or with a partner, in any type of business (including commercial farms)	128	664	*	*	797
Helping without pay in a family business	21	38	-	-	59
Unspecified	-	-	-	*	*

* For all values of 10 000 or lower the sample size is too small for reliable estimates.

Due to rounding numbers do not necessarily add up to totals.

3. Workers (employers, employees and self-employed)**3.11 By employment status****3.11.2 By sector, population group and gender**

1 000

Employment status	Black African			Coloured			Indian/Asian			White			Total		
	Total	Male	Female	Total	Male	Female	Total	Male	Female	Total	Male	Female	Total	Male	Female
Formal sector															
Total	4 873	3 154	1 719	1 196	666	530	432	261	172	1 788	1 010	778	8 293	5 093	3 200
Working for someone else for pay	4 737	3 059	1 677	1 166	640	526	392	230	161	1 438	757	681	7 737	4 689	3 048
Working for one or more private households as a gardener or security guard	11	*	*	*	*	*	-	-	-	-	-	-	13	*	*
Working on his/her own or on a small family farm/plot or collecting natural products from the forest or sea	*	*	*	*	*	-	-	-	-	*	*	*	*	*	*
Working on his/her own or with a partner, in any type of business (including commercial farms)	107	77	30	26	23	*	35	28	*	336	249	87	506	378	128
Helping without pay in a family business	16	*	*	*	*	-	*	*	*	11	*	*	33	12	21
Informal sector															
Total	2 004	1 114	889	92	60	32	36	27	*	115	60	55	2 249	1 263	986
Working for someone else for pay	464	338	127	32	21	11	13	*	*	20	*	11	530	378	152
Working for one or more private households as a gardener or security guard	153	142	*	11	*	*	-	-	-	*	*	*	165	151	14
Working on his/her own or on a small family farm/plot or collecting natural products from the forest or sea	257	138	118	*	*	-	*	*	-	*	*	*	261	142	119
Working on his/her own or with a partner, in any type of business (including commercial farms)	1 076	477	599	45	28	18	21	16	*	89	48	41	1 234	570	664
Helping without pay in a family business	54	19	35	*	*	*	*	*	*	*	*	*	59	21	38
Unspecified	-	-	-	-	-	-	-	-	-	-	-	-	-	-	-

* For all values of 10 000 and lower the sample size is too small for reliable estimates.

Totals include other and unspecified population groups.

Domestic workers are not included in this table.

Labour force survey, September 2003

Due to rounding numbers do not necessarily add up to totals.

3. Workers (employers, employees and self-employed)

3.12 Provision for, or contribution towards, medical aid fund/ health insurance, by main industry

3.12.1 Formal sector

Main industry	Extent of cover				
	Worker only	Worker and dependants	None	Unspecified/ Don't know	Total
Total	1 171	2 066	4 975	81	8 293
Agriculture, hunting, forestry and fishing	32	31	764	*	832
Mining and quarrying	123	127	248	*	500
Manufacturing	202	341	871	18	1 432
Electricity, gas and water supply	19	41	24	*	84
Construction	18	32	305	*	360
Wholesale and retail trade	126	183	1 200	23	1 532
Transport, storage and communication	71	134	229	*	438
Financial intermediation, insurance, real estate and business services	197	251	546	*	1 000
Community, social and personal services	381	918	766	16	2 082
Private households with employed persons	-	-	*	-	*
Exterior organisations and foreign governments	-	*	*	*	*
Other	*	*	*	-	15
Unspecified	*	*	*	-	*

* For all values of 10 000 or lower the sample size is too small for reliable estimates.

Due to rounding numbers do not necessarily add up to totals.

3. Workers (employers, employees and self-employed)**3.12 Provision for or contribution towards medical aid fund/ health insurance, by main industry****3.12.2 Informal sector**

1 000

Main industry	Extent of cover				
	Worker only	Worker and dependants	None	Unspecified	Total
Total	11	43	2 186	*	2 249
Agriculture, hunting, forestry and fishing	*	*	346	*	350
Mining and quarrying	*	*	*	-	*
Manufacturing	*	*	190	*	198
Electricity, gas and water supply	*	-	*	-	*
Construction	*	*	253	*	259
Wholesale and retail trade	*	*	896	*	909
Transport, storage and communication	*	*	118	*	120
Financial intermediation, insurance, real estate and business services	*	*	70	*	74
Community, social and personal services	*	20	154	*	176
Private households with employed persons	-	*	153	*	155
Other	-	-	*	-	*
Unspecified	-	-	-	-	-

* For all values of 10 000 or lower the sample size is too small for reliable estimates.

Due to rounding numbers do not necessarily add up to totals.

3. Workers (employers, employees and self-employed)

3.13 By main industry and location of business

3.13.1 Formal sector

1 000

Main industry	In the owner's home/ On the owner's farm	In someone else's home	Inside formal business premises such as factory or office	At a service outlet such as a shop, school, post office etc	At a market	On a foot path, street corner, open space or field	No fixed location	Unspecified\ Other	Total
Total	951	27	4 621	2 489	*	88	97	14	8 293
Agriculture, hunting, forestry and fishing	649	*	134	*	-	35	*	*	832
Mining and quarrying	*	-	477	*	-	*	*	*	500
Manufacturing	37	*	1 303	84	*	*	*	*	1 432
Electricity, gas and water supply	-	-	71	11	-	*	*	-	84
Construction	43	*	233	21	-	*	44	*	360
Wholesale and retail trade	60	*	599	851	*	*	*	*	1 532
Transport, storage and communication	42	*	285	78	-	*	21	*	438
Financial intermediation, insurance, real estate and business services	62	*	736	189	-	*	*	*	1 000
Community, social and personal services	45	*	760	1 236	-	20	12	*	2 082
Private households with employed persons	*	-	*	-	-	-	*	-	*
Exterior organisations and foreign governments	-	-	*	-	-	-	-	-	*
Other	*	-	14	-	-	-	-	-	15
Unspecified	-	-	*	*	-	-	*	-	*

* For all values of 10 000 or lower the sample size is too small for reliable estimates.

Due to rounding numbers do not necessarily add up to totals.

3. Workers (employers, employees and self-employed)

3.13 By main industry and location of business

3.13.2 Informal sector

1 000

Main industry	In the owner's home/ On the owner's farm	In someone else's home	Inside formal business premises such as factory or office	At a service outlet such as a shop, school, post office etc	At a market	On a foot path, street corner, open space or field	No fixed location	Other	Total
Total	1 395	80	83	138	24	178	344	*	2 249
Agriculture, hunting, forestry and fishing	308	*	*	*	*	16	13	*	350
Mining and quarrying	*	-	*	-	-	-	-	*	*
Manufacturing	134	*	18	*	*	*	19	-	198
Electricity, gas and water supply	-	-	*	-	-	-	-	-	*
Construction	112	26	*	*	-	*	104	*	259
Wholesale and retail trade	527	11	18	65	19	122	147	*	909
Transport, storage and communication	46	*	*	*	-	13	40	*	120
Financial intermediation, insurance, real estate and business services	43	*	14	*	*	*	*	-	74
Community, social and personal services	86	*	*	48	*	13	11	*	176
Private households with employed persons	136	15	-	-	-	*	*	*	155
Other	*	-	*	-	-	*	-	-	*
Unspecified	-	-	-	-	-	-	-	-	-

* For all values of 10 000 or lower the sample size is too small for reliable estimates.

Due to rounding numbers do not necessarily add up to totals.

3. Workers (employees, employers and self-employed)

3.14 By main industry and number of regular workers in the business

1 000

Main industry	Number of regular workers							
	1	2 - 4	5 - 9	10 - 19	20 - 49	50 or more	Unspecified/ Don't know	Total
Total	2 342	1 487	1 193	1 490	1 853	3 074	184	11 622
Agriculture, hunting, forestry and fishing	187	200	144	172	263	214	16	1 197
Mining and quarrying	*	18	28	19	20	412	*	503
Manufacturing	133	112	116	159	333	746	36	1 634
Electricity, gas and water supply	*	*	*	*	14	51	*	86
Construction	87	141	100	109	107	74	*	626
Wholesale and retail trade	684	406	354	386	291	294	35	2 451
Transport, storage and communication	86	85	58	50	78	194	11	563
Financial intermediation, insurance, real estate and business services	79	119	130	164	213	348	26	1 079
Community, social and personal services	133	207	230	406	525	724	40	2 265
Private households with employed persons	946	192	25	*	*	*	*	1 185
Exterior organisations and foreign governments	-	-	*	*	*	-	*	*
Other	*	*	*	*	*	*	*	19
Unspecified	-	*	*	*	*	*	*	11

* For all values of 10 000 or more the sample size is too small for reliable estimates.

Due to rounding numbers do not necessarily add up to totals.

3. Workers (employers, employees and self-employed)

3.15 By main industry and whether their company or close corporation is registered

1 000

Main industry	Whether company or close corporation is registered			
	Registered	Not registered	Unspecified	Total
Total	7 077	4 393	153	11 622
Agriculture, hunting, forestry and fishing	823	348	26	1 197
Mining and quarrying	463	35	*	503
Manufacturing	1 411	206	18	1 634
Electricity, gas and water supply	73	12	*	86
Construction	339	272	15	626
Wholesale and retail trade	1 481	944	26	2 451
Transport, storage and communication	414	139	*	563
Financial intermediation, insurance, real estate and business services	971	91	16	1 079
Community, social and personal services	1 026	1 220	18	2 265
Private households with employed persons	52	1 120	13	1 185
Exterior organisations and foreign governments	*	*	-	*
Other	14	*	*	19
Unspecified	*	-	*	11

* For all values of 10 000 or lower the sample size is too small for reliable estimates.

Due to rounding numbers do not necessarily add up to totals.

3. Workers (employers, employees and self-employed)

3.16 By main industry and deduction of UIF contributions

1 000

Main industry	Deduction of UIF contributions				
	Yes	No (income is above UIF limit)	No (other reasons)	Unspecified	Total
Total	5 734	642	5 056	191	11 622
Agriculture, hunting, forestry and fishing	465	29	683	21	1 197
Mining and quarrying	425	14	61	*	503
Manufacturing	1 158	62	398	16	1 634
Electricity, gas and water supply	58	*	19	*	86
Construction	199	25	392	*	626
Wholesale and retail trade	978	94	1 339	41	2 451
Transport, storage and communication	296	28	231	*	563
Financial intermediation, insurance, real estate and business services	740	62	250	28	1 079
Community, social and personal services	1 100	273	858	33	2 265
Private households with employed persons	294	47	818	26	1 185
Exterior organisations and foreign governments	*	*	*	-	*
Other	13	*	*	*	19
Unspecified	*	-	*	*	11

* For all values of 10 000 or lower the sample size is too small for reliable estimates.

Due to rounding numbers do not necessarily add up to totals.

4. Employees

4.1 Conditions of employment

4.1.1 By main industry and existence of written contract

1 000

Main industry	Written contract			
	Yes	No	Don't know/ unspecified	Total
Total	6 335	3 029	144	9 509
Agriculture, hunting, forestry and fishing	447	411	14	872
Mining and quarrying	438	62	*	501
Manufacturing	1 116	298	21	1 434
Electricity, gas and water supply	77	*	-	85
Construction	216	232	*	456
Wholesale and retail trade	967	463	29	1 460
Transport, storage and communication	318	151	*	479
Financial intermediation, insurance, real estate and business services	770	138	14	922
Community, social and personal services	1 668	398	24	2 090
Private households with employed persons	294	866	23	1 182
Exterior organisations and foreign governments	*	-	-	*
Other	15	*	*	17
Unspecified	*	*	-	*

* For all values of 10 000 or lower the sample size is too small for reliable estimates.

Table excludes employers, self-employed and those working without pay.

Due to rounding numbers do not necessarily add up to totals.

4. Employees

4.1 Conditions of employment

4.1.2 By main industry and terms of employment

1 000

Main industry	Terms of employment						
	Permanent	A fixed period contract	Temporary	Casual	Seasonal	Don't know/unspecified	Total
Total	7 311	364	1 096	614	66	58	9 509
Agriculture, hunting, forestry and fishing	614	39	117	43	52	*	872
Mining and quarrying	471	20	*	*	-	-	501
Manufacturing	1 192	56	111	67	*	*	1 434
Electricity, gas and water supply	74	*	*	*	-	-	85
Construction	199	56	126	68	*	*	456
Wholesale and retail trade	1 081	30	166	177	*	*	1 460
Transport, storage and communication	366	16	62	29	*	*	479
Financial intermediation, insurance, real estate and business services	787	48	59	24	*	*	922
Community, social and personal services	1 864	70	109	38	*	*	2 090
Private households with employed persons	641	23	331	165	*	18	1 182
Exterior organisations and foreign governments	*	*	-	*	-	-	*
Other	16	-	*	-	*	*	17
Unspecified	*	-	-	-	-	-	*

* For all values of 10 000 or lower the sample size is too small for reliable estimates.

Table excludes employers, self-employed and those working without pay.

Due to rounding numbers do not necessarily add up to totals.

4. Employees

4.1 Conditions of employment

4.1.3 By main industry and paid leave status

1 000

Main industry	Paid leave			
	Yes	No	Unspecified	Total
Total	5 907	3 478	123	9 509
Agriculture, hunting, forestry and fishing	320	543	*	872
Mining and quarrying	457	40	*	501
Manufacturing	1 038	372	24	1 434
Electricity, gas and water supply	73	12	-	85
Construction	144	308	*	456
Wholesale and retail trade	865	566	29	1 460
Transport, storage and communication	306	169	*	479
Financial intermediation, insurance, real estate and business services	703	204	15	922
Community, social and personal services	1 720	351	18	2 090
Private households with employed persons	258	909	15	1 182
Exterior organisations and foreign governments	*	*	-	*
Other	14	*	*	17
Unspecified	*	-	-	*

* For all values of 10 000 or lower the sample size is too small for reliable estimates.

Table excludes employers, self-employed and those working without pay.

Due to rounding numbers do not necessarily add up to totals.

4. Employees

4.1 Conditions of employment

4.1.4 By main industry and trade union membership

1 000

Main industry	Trade union membership			
	Yes	No	Unspecified	Total
Total	2 992	6 308	208	9 509
Agriculture, hunting, forestry and fishing	69	795	*	872
Mining and quarrying	378	118	*	501
Manufacturing	551	852	32	1 434
Electricity, gas and water supply	41	44	*	85
Construction	64	380	13	456
Wholesale and retail trade	297	1 123	40	1 460
Transport, storage and communication	159	307	13	479
Financial intermediation, insurance, real estate and business services	207	684	31	922
Community, social and personal services	1 196	844	50	2 090
Private households with employed persons	21	1 145	15	1 182
Exterior organisations and foreign governments	*	*	-	*
Other	*	*	*	17
Unspecified	*	*	-	*

* For all values of 10 000 or lower the sample size is too small for reliable estimates.

Table excludes employers, self-employed and those working without pay.

Due to rounding numbers do not necessarily add up to totals.

4. Employees

4.1 Conditions of employment

4.1.5 By main industry and whether the employer provides for, or contributes towards, medical aid fund/ health insurance

1 000

Main industry	Extent of cover				
	Employee only	Employee and dependants	None	Unspecified	Total
Total	1 119	2 005	6 281	104	9 509
Agriculture, hunting, forestry and fishing	23	17	822	11	872
Mining and quarrying	124	128	248	*	501
Manufacturing	199	335	879	21	1 434
Electricity, gas and water supply	20	41	25	*	85
Construction	14	28	408	*	456
Wholesale and retail trade	113	165	1 159	23	1 460
Transport, storage and communication	71	130	271	*	479
Financial intermediation, insurance, real estate and business services	174	221	520	*	922
Community, social and personal services	376	924	771	19	2 090
Private households with employed persons	*	*	1 163	*	1 182
Exterior organisations and foreign governments	-	*	*	*	*
Other	*	*	*	*	17
Unspecified	*	*	*	-	*

* For all values of 10 000 or lower the sample size is too small for reliable estimates.

Table excludes employers, self-employed and those working without pay.

Due to rounding numbers do not necessarily add up to totals.

5. The unemployed

5.1 By age, population group and gender

5.1.1 Official definition of unemployment

Age group	Black African			Coloured			Indian/Asian			White			Total		
	Total	Male	Female	Total	Male	Female	Total	Male	Female	Total	Male	Female	Total	Male	Female
RSA															
Total	3 988	1 898	2 090	380	186	194	96	54	42	105	49	55	4 570	2 187	2 382
15-24	1 284	636	648	171	83	88	42	26	16	34	17	17	1 531	761	769
25-34	1 555	691	864	111	52	59	27	17	*	27	11	16	1 721	771	950
35-44	745	338	407	61	28	33	17	*	12	23	*	16	846	378	468
45-54	335	180	155	29	18	11	*	*	*	14	*	*	387	212	175
55+	70	53	17	*	*	*	*	*	-	*	*	-	84	64	21

* For all values of 10 000 or more the sample size is too small for reliable estimates.

Totals include other and unspecified population groups.

5. The unemployed

5.1 By age, population group and gender

5.1.2 Expanded definition of unemployment

1 000

Age group	Black African			Coloured			Indian/Asian			White			Total		
	Total	Male	Female	Total	Male	Female	Total	Male	Female	Total	Male	Female	Total	Male	Female
RSA															
Total	7 472	3 193	4 280	577	256	321	122	62	60	157	67	90	8 332	3 579	4 753
15-24	2 565	1 148	1 417	258	116	142	50	30	20	53	26	27	2 927	1 321	1 606
25-34	2 762	1 123	1 639	159	64	95	32	18	15	35	13	22	2 990	1 218	1 772
35-44	1 353	522	831	95	40	55	24	*	18	36	*	27	1 508	577	932
45-54	638	298	341	52	29	23	14	*	*	22	11	11	726	346	381
55+	154	102	52	13	*	*	*	*	*	11	*	*	181	118	63

* For all values of 10 000 or more the sample size is too small for reliable estimates.

Totals include other and unspecified population groups.

5. The unemployed

5.2 By duration of job seeking, age and whether they have worked before (official definition of unemployment)

1 000

Duration of job seeking**	15-30 years			31-46 years			47-65 years			Total		
	Total	Worked before	Never worked	Total	Worked before	Never worked	Total	Worked before	Never worked	Total	Worked before	Never worked
Total	2 742	677	2 065	1 479	868	611	349	280	69	4 570	1 825	2 745
Less than a month	206	69	138	95	58	36	23	20	*	324	147	177
1 month - < 2 months	128	46	82	66	39	27	15	12	*	209	96	113
2 months - < 3 months	103	42	61	46	31	15	11	*	*	160	81	79
3 months - < 4 months	122	41	80	49	32	17	*	*	*	180	82	98
4 months - < 6 months	130	35	94	55	37	17	12	*	*	197	82	115
6 months - < 1 year	400	99	301	131	91	40	25	22	*	556	212	344
1 year - < 3 years	824	179	645	290	200	89	66	54	12	1 180	433	747
3 years or more	793	151	642	730	371	359	183	143	40	1 706	664	1 041
Not applicable	19	*	*	*	*	*	*	*	-	29	16	12
Don't know/Unspecified	16	*	12	11	*	*	*	*	*	30	11	18

* For all values of 10 000 or lower the sample size is too small for reliable estimates.

Information on this topic is not available for the expanded definition of unemployment.

5. The unemployed

5.3 Unemployed persons who have worked before by length of time since they last worked and industry in which they worked

5.3.1 Official definition of unemployment

1 000

Length of time since last worked	Previous industry										
	Agriculture, hunting and forestry	Mining	Manufacturing	Electricity, gas and water	Construction	Wholesale and retail trade	Transport, storage and communication	Finance and business services	Community, social and personal services	Private households	Total
Total	126	66	349	12	177	411	84	144	179	272	1 825
1 week - < 1 month	*	*	*	*	*	*	*	*	*	*	46
1 month - < 2 months	*	*	*	*	14	14	*	*	*	*	66
2 months - < 3 months	*	*	*	*	12	16	*	*	*	*	59
3 months - < 4 months	*	*	18	*	11	11	*	*	*	*	66
4 months - < 5 months	*	*	*	*	*	12	*	*	*	*	45
5 months - < 6 months	*	*	11	-	*	13	*	*	*	*	56
6 months - < 1 year	25	*	32	*	15	47	*	18	16	19	186
1 year - < 2 years	23	*	45	*	29	56	14	25	32	42	277
2 years - < 3 years	12	*	43	*	17	51	14	23	30	32	232
3 years or more	31	41	159	*	52	157	26	46	65	123	706
Don't know/Unspecified	*	*	15	-	*	26	*	*	*	11	85

* For all values of 10 000 or lower the sample size is too small for reliable estimates

5. The unemployed

5.3 Unemployed persons who have worked before by length of time since they last worked and industry in which they worked

5.3.2 Expanded definition of unemployment

1 000

Length of time since last worked	Previous industry										
	Agriculture, hunting and forestry	Mining	Manufacturing	Electricity, gas and water	Construction	Wholesale and retail trade	Transport, storage and communication	Finance and business services	Community, social and personal services	Private households	Total
Total	316	103	505	20	263	644	118	199	278	519	2 972
1 week - < 1 month	15	*	13	*	13	12	*	*	*	12	82
1 month - < 2 months	22	*	*	*	19	20	*	*	*	16	107
2 months - < 3 months	15	*	*	*	17	24	*	*	*	14	101
3 months - < 4 months	12	*	19	*	16	15	*	*	*	15	94
4 months - < 5 months	25	*	11	*	*	14	*	*	*	13	84
5 months - < 6 months	13	*	14	-	*	20	*	*	*	*	80
6 months - < 1 year	45	*	41	*	25	65	13	23	22	40	280
1 year - < 2 years	55	*	59	*	40	91	18	36	47	77	436
2 years - < 3 years	28	12	63	*	28	82	20	30	44	67	378
3 years or more	78	66	244	*	82	268	41	69	112	240	1 211
Don't know/Unspecified	*	*	24	-	*	32	*	*	*	17	120

* For all values of 10 000 or lower the sample size is too small for reliable estimates

5. The unemployed

5.4 Unemployed persons who have worked before by length of time since they last worked and previous occupation

5.4.1 Official definition of unemployment

1 000

Length of time since last worked	Legislators, senior officials and managers	Professionals	Technicians and associate professionals	Clerks	Service workers and shop and market sales workers	Skilled agricultural and fishery workers	Craft and related trades workers	Plant and machine operators and assemblers	Elementary occupations	Domestic workers	Total
Total	23	16	72	187	256	16	271	211	534	235	1 825
1 week - < 1 month	*	*	*	*	*	*	*	*	23	*	46
1 month - < 2 months	*	*	*	*	*	*	14	*	18	*	66
2 months - < 3 months	*	-	*	*	*	*	*	*	22	*	59
3 months - < 4 months	*	*	*	*	*	*	16	*	16	*	66
4 months - < 5 months	*	*	*	*	*	*	*	*	14	*	45
5 months - < 6 months	*	*	*	*	*	*	*	*	17	*	56
6 months - < 1 year	*	*	*	21	29	*	25	23	54	15	186
1 year - < 2 years	*	*	11	29	44	*	41	28	75	39	277
2 years - < 3 years	*	*	*	30	36	*	25	25	70	30	232
3 years - > 3 years	*	*	27	63	93	*	99	96	203	107	706
Don't know/Unspecified	*	-	*	12	12	-	14	*	22	*	85

* For all values of 10 000 or lower the sample size is too small for reliable estimates

5. The unemployed

5.4 Unemployed persons who have worked before by length of time since they last worked and previous occupation

5.4.2 Expanded definition of unemployment

1 000

Length of time since last worked	Legislators, senior officials and managers	Professionals	Technicians and associate professionals	Clerks	Service workers and shop and market sales workers	Skilled agricultural and fishery workers	Craft and related trades workers	Plant and machine operators and assemblers	Elementary occupations	Domestic workers	Total
Total	27	22	108	274	407	57	408	301	899	465	2 972
1 week - < 1 month	*	*	*	*	*	*	14	*	34	*	82
1 month - < 2 months	*	*	*	*	12	*	20	*	36	14	107
2 months - < 3 months	*	-	*	*	16	*	14	*	38	*	101
3 months - < 4 months	*	*	*	*	12	*	20	*	26	11	94
4 months - < 5 months	*	*	*	*	*	*	12	*	30	12	84
5 months - < 6 months	*	*	*	*	11	*	11	*	28	*	80
6 months - < 1 year	*	*	12	28	37	*	38	30	89	33	280
1 year - < 2 years	*	*	17	44	69	16	56	35	120	73	436
2 years - < 3 years	*	*	17	45	55	*	41	37	113	61	378
3 years - > 3 years	*	*	43	104	162	*	165	145	349	220	1 211
Don't know/Unspecified	*	*	*	13	17	*	17	13	36	15	120

* For all values of 10 000 or lower the sample size is too small for reliable estimates

5. The unemployed

5.5 Unemployed persons who have worked before by length of time since they last worked and age (official definition of unemployment)

Length of time since last worked	Age group							
	15 - 30 years		31 - 46 years		47 - 65 years		Total	
	N (1 000)	%	N (1000)	%	N (1 000)	%	N (1 000)	%
Total	677	100,0	868	100,0	280	100,0	1 825	100,0
1 week - < 1 month	25	3,7	17	2,0	*	1,3	46	2,5
1 month - < 2 months	37	5,5	22	2,5	*	2,7	66	3,6
2 months - < 3 months	34	5,0	21	2,4	*	1,6	59	3,2
3 months - < 4 months	40	5,9	20	2,3	*	2,4	66	3,6
4 months - < 5 months	21	3,1	20	2,3	*	1,4	45	2,5
5 months - < 6 months	34	5,1	18	2,1	*	1,2	56	3,0
6 months - < 1 year	99	14,6	73	8,5	14	5,0	186	10,2
1 year - < 2 years	137	20,3	113	13,0	27	9,5	277	15,2
2 years - > 3 years	91	13,5	112	12,9	28	10,2	232	12,7
3 years or more	126	18,6	411	47,4	169	60,2	706	38,7
Don't know/Unspecified	33	4,8	40	4,6	13	4,5	85	4,7

* For all values of 10 000 or lower the sample size is too small for reliable estimates

5. The unemployed

5.6 Unemployed persons who have never worked by duration of job seeking and age (official definition of unemployment)

Duration of job seeking	Age group							
	15 - 30 years		31 - 46 years		47 - 65 years		Total	
	N (1 000)	%	N (1 000)	%	N (1 000)	%	N (1 000)	%
Total	2 065	100,0	611	100,0	69	100,0	2 745	100,0
Less than a month	138	6,7	36	6,0	*	4,4	177	6,5
1 month - < 2 months	82	4,0	27	4,5	*	4,1	113	4,1
2 months - < 3 months	61	3,0	15	2,5	*	4,3	79	2,9
3 months - < 4 months	80	3,9	17	2,7	*	1,4	98	3,6
4 months - < 6 months	94	4,6	17	2,9	*	3,8	115	4,2
6 months - < 1 year	301	14,6	40	6,5	*	4,5	344	12,5
1 year - < 3 years	645	31,3	89	14,6	12	18,2	747	27,2
3 years- > 3 years	642	31,1	359	58,8	40	57,9	1 041	37,9
Not applicable	*	0,4	*	0,5	-	-	12	0,4
Don't know/Unspecified	12	0,6	*	1,0	*	1,5	18	0,7

* For all values of 10 000 or lower the sample size is too small for reliable estimates

5. The unemployed

5.7 By highest level of education, population group and gender

5.7.1 Official definition of unemployment

Highest level of education	Black African			Other ¹			Total		
	Total	Male	Female	Total	Male	Female	Total	Male	Female
Total	3 988	1 898	2 090	582	289	292	4 570	2 187	2 382
None	136	72	64	*	*	*	145	75	69
Grade 0 to Grade 3/Std 1	126	71	55	*	*	*	134	73	61
Grade 4/Std 2	111	61	51	*	*	*	122	68	54
Grade 5/Std 3	139	79	60	*	*	*	149	84	65
Grade 6/Std 4	189	100	89	24	11	13	213	111	102
Grade 7/Std 5	310	154	156	39	20	19	349	174	175
Grade 8/Std 6	365	176	189	55	28	27	420	204	216
Grade 9/Std 7	337	168	168	67	38	29	404	207	198
Grade 10/Std 8	413	199	214	92	45	48	505	243	261
Grade 11/Std 9	506	219	287	42	23	19	548	242	306
Grade 12/Std 10	1 111	495	616	186	88	98	1 297	583	714
NTC I - NTC III	25	16	*	*	*	*	29	17	12
Dipl./cert. with Grade 11/Std 9 or lower	23	*	17	*	*	*	25	*	19
Dipl./cert. with Grade 12/Std 10	150	60	90	23	*	13	173	70	102
Degree/higher	27	12	15	*	*	*	36	17	19
Other	*	*	*	-	-	-	*		*
Unspecified	19	11	*	*	*	*	20	12	*

* For all values of 10 000 or lower the sample size is too small for reliable estimates.

¹ Other includes coloured, Indian/Asian, white and unspecified population groups. These groups are aggregated due to the small sample size.

5. The unemployed

5.7 By highest level of education, population group and gender

5.7.2 Expanded definition of unemployment

1 000

Highest level of education	Black African			Other ¹			Total		
	Total	Male	Female	Total	Male	Female	Total	Male	Female
Total	7 472	3 193	4 280	859	386	473	8 332	3 579	4 753
None	375	147	228	14	*	11	389	150	239
Grade 0 to Grade 3/Std 1	305	151	154	16	*	*	321	157	164
Grade 4/Std 2	245	122	123	17	*	*	263	131	132
Grade 5/Std 3	306	160	146	19	*	12	325	167	158
Grade 6/Std 4	402	189	213	38	20	18	441	209	231
Grade 7/Std 5	614	268	346	66	30	36	680	298	382
Grade 8/Std 6	694	305	389	98	47	51	792	352	440
Grade 9/Std 7	685	289	396	99	47	51	784	337	447
Grade 10/Std 8	775	324	450	131	56	75	906	380	525
Grade 11/Std 9	916	346	569	61	29	32	976	375	601
Grade 12/Std 10	1 827	759	1 068	246	109	137	2 073	868	1 204
NTC I - NTC III	35	20	14	*	*	*	41	23	18
Dipl./cert. with Grade 11/Std 9 or lower	31	*	22	*	*	*	34	*	24
Dipl./cert. with Grade 12/Std 10	193	71	122	29	12	17	222	83	139
Degree/higher	33	14	20	14	*	*	47	19	28
Other	*	*	*	*	-	*	*	*	*
Unspecified	33	17	16	*	*	*	36	18	18

* For all values of 10 000 or lower the sample size is too small for reliable estimates.

¹ Other includes coloured, Indian/Asian, white and unspecified population groups. These groups are aggregated due to the small sample size.

5. The unemployed

5.8 Unemployed persons with degrees, diplomas and certificates by field of study, definition of unemployment and gender

1 000

Field of study for degree, diploma or certificate	Official definition			Expanded definition		
	Total	Male	Female	Total	Male	Female
Total	234	93	141	302	112	191
Communication studies and language	*	*	*	*	*	*
Education, training and development	41	*	31	58	15	43
Manufacturing, engineering and technology	33	24	*	41	28	13
Human and social studies	11	*	*	13	*	*
Law, military science and security	*	*	*	*	*	*
Health sciences and social services	13	*	11	17	*	13
Agriculture and nature conservation	*	*	*	*	*	*
Culture and arts	*	*	*	*	*	*
Business, commerce and management studies	66	25	41	86	29	57
Physical, mathematical, computer and life sciences	32	13	19	41	15	25
Services	*	*	*	*	*	*
Physical planning and construction	*	*	*	*	*	*
Don't know	*	*	*	*	*	*
Unspecified	*	*	*	*	*	*

* For all values of 10 000 or lower the sample size is too small for reliable estimates.

6. Unemployed and not economically active population by reason for not working and gender

6.1 Official definition of unemployment

Reason for not for working	1 000								
	Male			Female			Total		
	Total	Not economically active	Unemployed	Total	Not economically active	Unemployed	Total	Not economically active	Unemployed
Total	7 644	5 457	2 187	10 650	8 268	2 382	18 294	13 725	4 570
Has found a job, but is only starting at a definite date in the future	*	-	*	18	-	18	29	-	29
Scholar or student, prefers not to work	2 682	2 682	-	2 572	2 572	-	5 254	5 254	-
Housewife/homemaker, prefers not to work	49	49	-	1 241	1 241	-	1 290	1 290	-
Retired and prefers not to seek formal work	132	132	-	142	142	-	273	273	-
Illness, invalid, disabled or unable to work	669	669	-	670	670	-	1 338	1 338	-
Too young or too old to work	259	259	-	787	787	-	1 045	1 045	-
Seasonal worker, e.g. fruit picker, wool-shearer	22	14	*	45	30	15	67	44	23
Lack of skills or qualifications for available jobs	367	197	170	555	352	202	922	549	373
Cannot find any work	2 855	1 117	1 738	3 822	1 919	1 902	6 677	3 037	3 640
Cannot find suitable work (salary, location of work or conditions not satisfactory)	198	75	123	263	123	140	461	199	263
Contract worker, e.g. mine worker resting according to contract	20	*	13	*	*	*	23	*	15
Recently retrenched	137	60	76	66	39	26	202	100	103
Other reasons	216	167	49	439	363	76	656	531	125
Not applicable	18	18	-	19	19	-	37	37	-
Unspecified	*	*	-	*	*	-	21	21	-

* For all values of 10 000 or lower the sample size is too small for reliable estimates.

6. Unemployed and not economically active population by reason for not working and gender

6.2 Expanded definition of unemployment

Reason for not for working	1 000								
	Male			Female			Total		
	Total	Not economically active	Unemployed	Total	Not economically active	Unemployed	Total	Not economically active	Unemployed
Total	7 644	4 065	3 579	10 650	5 898	4 753	18 294	9 963	8 332
Has found a job, but is only starting at a definite date in the future	*	-	*	18	-	18	29	-	29
Scholar or student, prefers not to work	2 682	2 682	-	2 572	2 572	-	5 254	5 254	-
Housewife/homemaker, prefers not to work	49	49	-	1 241	1 241	-	1 290	1 290	-
Retired and prefers not to seek formal work	132	132	-	142	142	-	273	273	-
Illness, invalid, disabled or unable to work	669	669	-	670	670	-	1 338	1 338	-
Too young or too old to work	259	259	-	787	787	-	1 045	1 045	-
Seasonal worker, e.g. fruit picker, wool-shearer	22	*	21	45	*	42	67	*	63
Lack of skills or qualifications for available jobs	367	37	329	555	56	499	922	93	828
Cannot find work	2 855	113	2 742	3 822	188	3 634	6 677	301	6 376
Cannot find suitable work (salary, location of work or conditions not satisfactory)	198	15	183	263	18	245	461	33	428
Contract worker, e.g. mine worker resting according to contract	20	*	18	*	-	*	23	*	21
Recently retrenched	137	20	117	66	*	55	202	30	173
Other reasons	216	58	158	439	183	256	656	241	414
Not applicable	18	18	-	19	19	-	37	37	-
Unspecified	*	*	-	*	*	-	21	21	-

* For all values of 10 000 or lower the sample size is too small for reliable estimates.

7. Population aged 66 years and older

7.1 Economically and not economically active by type of economic activity, gender and involvement in the activity

1 000

Economic activity and sex	Involved	Not involved	Total
Run or do any kind of business, big or small for himself/herself			
Total	58	2 143	2 201
Male	34	761	795
Female	23	1 382	1 406
Do any work for a wage, salary, commission or any payment in kind			
Total	50	2 151	2 201
Male	34	761	795
Female	16	1 390	1 406
Do any work as a domestic worker for a wage, salary, or any payment in kind			
Total	20	2 181	2 201
Male	*	787	795
Female	12	1 394	1 406
Help unpaid in a family business of any kind			
Total	*	2 199	2 201
Male	*	795	795
Female	*	1 404	1 406
Do any work in his/her own or the family's plot, farm, food garden, cattle post or kraal or help in growing farm produce or in looking after animals for the household			
Total	39	2 162	2 201
Male	25	770	795
Female	14	1 391	1 406

7. Population aged 66 years and older

7.1 Economically and not economically active by type of economic activity, gender and involvement in the activity (concluded)

1 000			
Economic activity and sex	Involved	Not involved	Total
Do any construction or major repair work on his/her own home, plot, cattle post or business or those of the family			
Total	*	2 197	2 201
Male	*	793	795
Female	*	1 404	1 406
Catch any fish, prawns, shells, wild animals or other food for sale or family food			
Total	-	2 201	2 201
Male	-	795	795
Female	-	1 406	1 406
Beg for money or food in public			
Total	-	2 201	2 201
Male	-	795	795
Female	-	1 406	1 406
Involved in at least one activity except begging			
Total	168	2 033	2 201
Male	101	694	795
Female	67	1 339	1 406

* For all values of 10 000 or lower the sample size is too small for reliable estimates.

Totals include unspecified gender.

7. Population aged 66 years and older

7.2 Economically and not economically active by type of economic activity, population group and involvement in the activity

1 000

Economic activity and population group	Involved	Not involved	Total
Run or do any kind of business, big or small for himself/herself			
Total	58	2 143	2 201
African	32	1 579	1 611
Other ¹	26	564	590
Do any work for a wage, salary, commission or any payment in kind			
Total	50	2 151	2 201
African	25	1 586	1 611
Other ¹	24	565	590
Do any work as a domestic worker for a wage, salary, or any payment in kind			
Total	20	2 181	2 201
African	18	1 594	1 611
Other ¹	*	588	590
Help unpaid in a family business of any kind			
Total	*	2 199	2 201
African	*	1 609	1 611
Other ¹	*	589	590
Do any work in his/her own or the family's plot, farm, food garden, cattle post or kraal or help in growing farm produce or in looking after animals for the household			
Total	39	2 162	2 201
African	38	1 573	1 611
Other ¹	*	588	590

7. Population aged 66 years and older

7.2 Economically and not economically active by type of economic activity, population group and involvement in the activity (concluded)

1 000			
Economic activity and population group	Involved	Not involved	Total
Do any construction or major repair work on his/her own home, plot, cattle post or business or those of the family			
Total	*	2 197	2 201
African	*	1 608	1 611
Other ¹	*	589	590
Catch any fish, prawns, shells, wild animals or other food for sale or family food			
Total	-	2 201	2 201
African	-	1 611	1 611
Other ¹	-	589	590
Beg for money or food in public			
Total	-	2 201	2 201
African	-	1 611	1 611
Other ¹	-	589	590
Involved in at least one activity except begging			
Total	168	2 033	2 201
African	115	1 497	1 611
Other ¹	53	536	590

* For all values of 10 000 or lower the sample size is too small for reliable estimates.

¹ Other includes coloured, Indian/Asian, white and unspecified population groups. These groups are aggregated due to the small sample size.

Totals include other and unspecified population groups

7. Population aged 66 years and older

7.3 Those who are working by population group, gender and sector

1 000					
Population group and gender	Formal	Informal	Domestic	Unspecified	Total
All population groups					
Total	71	85	13	*	170
Male	52	49	*	*	102
Female	20	36	12	*	68
Black African					
Total	25	80	12	*	117
Male	21	44	*	-	66
Female	*	36	*	*	51
Other¹					
Total	46	*	*	*	53
Male	31	*	*	*	36
Female	15	*	*	-	17

¹ Other includes people formerly classified as coloured, Indian/Asian or white as well as those who did not specify population group

* For all values of 10 000 or lower the sample size is too small for reliable estimates

7. Population aged 66 years and older

7.4 Those who are working by main industry and gender

1 000			
Main industry	Male	Female	Total
Total	102	68	170
Agriculture, hunting, forestry and fishing	40	18	58
Mining and quarrying	*	-	*
Manufacturing	*	*	*
Electricity, gas and water supply	*	-	*
Construction	*	*	*
Wholesale and retail trade	15	18	33
Transport, storage and communication	*	-	*
Financial intermediation, insurance, real estate and business services	11	*	19
Community, social and personal services	*	*	17
Private households with employed persons	*	12	19
Unspecified	-	*	*

* For all values of 10 000 or lower the sample size is too small for reliable estimates

7. Population aged 66 years and older

7.5 Those who are working by main occupation and gender

1 000			
Main occupation	Male	Female	Total
Total	102	68	170
Legislators, senior officials and managers	14	*	16
Professionals	12	*	15
Technical and associate professionals	*	*	*
Clerks	*	*	*
Service workers and shop and market sales workers	*	*	12
Skilled agricultural and fishery workers	31	16	47
Craft and related trades workers	*	*	11
Plant and machine operators and assemblers	*	-	*
Elementary occupation	18	17	35
Domestic workers	*	12	13
Unspecified	-	*	*

* For all values of 10 000 the sample size is too small for reliable estimates.

8. Voluntary work among population of working age (15-65 years)

8.1 Population by province and involvement in uncompensated work

1 000

Province	Involvement in uncompensated work for the benefit of the community		Total
	Yes	No	
RSA	740	29 163	29 917
Western Cape	186	3 116	3 302
Eastern Cape	126	3 660	3 793
Northern Cape	13	517	529
Free State	58	1 755	1 814
KwaZulu-Natal	78	6 123	6 204
North West	62	2 369	2 431
Gauteng	81	6 705	6 787
Mpumalanga	47	1 973	2 020
Limpopo	89	2 946	3 037

* For all values of 10 000 or lower the sample size is too small for reliable estimates.

Total includes unspecifieds.

Due to rounding numbers do not necessarily add up to totals.

8. Voluntary work among population of working age (15-65 years)**8.2 Those engaged in voluntary work by age, population group and gender**

1 000

Area and age group	Black African			Other ¹			Total		
	Total	Male	Female	Total	Male	Female	Total	Male	Female
RSA									
Total	450	208	242	290	124	165	740	332	407
15-24	98	56	42	30	16	14	128	72	56
25-34	140	65	75	59	27	32	199	92	107
35-44	103	41	62	78	31	47	181	72	109
45-54	74	29	44	69	28	41	143	58	85
55+	34	16	18	55	23	32	89	39	50

* For all values of 10 000 or more the sample size is too small for reliable estimates.

¹ Other includes coloured, Indian/Asian, white and unspecified population groups. These groups are aggregated due to the small sample size.

Totals include other and unspecified population groups.

Due to rounding numbers do not necessarily add up to totals.

8. Voluntary work among population of working age (15-65 years)**8.3 Those engaged in voluntary work by population group, gender and labour market status****8.3.1 Official definition of unemployment**

1 000

Population group and gender	Total	Not economically active	Economically active			
			Total	Workers	Unemployed	Unemployment rate
All population groups						
Total	740	231	508	390	118	23,3
Male	332	78	254	199	55	21,7
Female	407	153	254	191	63	24,9
Black African						
Total	450	147	303	197	105	34,8
Male	208	57	151	101	50	33,2
Female	242	90	152	97	55	36,4
Other¹						
Total	290	84	206	193	13	6,4
Male	124	21	104	98	*	4,9
Female	165	63	102	94	*	7,9

* For all values of 10 000 or more the sample size is too small for reliable estimates.

¹ Other includes coloured, Indian/Asian, white and unspecified population groups. These groups are aggregated due to the small sample size.

Totals include other and unspecified population groups.

Due to rounding numbers do not necessarily add up to totals.

8. Voluntary work among population of working age (15-65 years)

8.3 Those engaged in voluntary work by population group, gender and labour market status

8.3.2 Expanded definition of unemployment

1 000

Population group and gender	Total	Not economically active	Economically active			
			Total	Workers	Unemployed	Unemployment rate
All population groups						
Total	740	159	580	390	190	32,8
Male	332	54	278	199	79	28,4
Female	407	105	302	191	111	36,8
Black African						
Total	450	86	364	197	167	45,8
Male	208	36	172	101	71	41,3
Female	242	50	192	97	96	49,8
Other¹						
Total	290	74	216	193	24	10,9
Male	124	18	107	98	*	7,7
Female	165	56	110	94	15	14,1

* For all values of 10 000 or more the sample size is too small for reliable estimates.

¹ Other includes coloured, Indian/Asian, white and unspecified population groups. These groups are aggregated due to the small sample size.

Totals include other and unspecified population groups.

Due to rounding numbers do not necessarily add up to totals.

8. Voluntary work among population of working age (15-65 years)

8.4 Population by type of uncompensated activity, population group, involvement in the activity and gender

1 000

Uncompensated activity and population group	Involved			Not involved			Total		
	Total	Male	Female	Total	Male	Female	Total	Male	Female
To help sick or handicapped people in their everyday activities									
Total	141	50	90	597	281	316	740	332	407
Black African	68	24	43	382	184	198	450	208	242
Other ¹	73	26	47	214	97	117	290	124	165
To provide medical care, or counselling, to sick or handicapped people									
Total	105	31	74	632	300	332	740	332	407
Black African	54	15	39	396	193	203	450	208	242
Other ¹	51	16	35	236	107	129	290	124	165
To provide training or instruction to others									
Total	115	55	60	622	276	346	740	332	407
Black African	53	27	26	397	181	216	450	208	242
Other ¹	62	28	34	225	95	130	290	124	165
To keep law and order in a community									
Total	102	73	30	635	258	376	740	332	407
Black African	70	49	21	380	159	221	450	208	242
Other ¹	33	24	*	255	99	155	290	124	165
To maintain or replenish community resources (e.g. building or improving roads, water supply, structures, green areas, etc.)									
Total	117	62	55	620	269	351	740	332	407
Black African	94	46	48	356	162	194	450	208	242
Other ¹	23	16	*	264	107	157	290	124	165
To organise cultural events (e.g. music, dance, or performances), sporting events, or recreational activities for a community, neighbourhood, or a group									
Total	213	103	110	524	228	296	740	332	407
Black African	143	75	68	307	133	174	450	208	242
Other ¹	70	28	42	218	95	122	290	124	165

8. Voluntary work among population of working age (15-65 years)**8.4 Population by type of uncompensated activity, population group, involvement in the activity and gender (concluded)**

1 000

Uncompensated activity and population group	Involved			Not involved			Total		
	Total	Male	Female	Total	Male	Female	Total	Male	Female
To collect money for an organisation/institution									
Total	119	51	68	618	280	338	740	332	407
Black African	45	20	25	405	188	216	450	208	242
Other ¹	74	31	43	213	92	121	290	124	165
To organise events to collect money for an organisation/institution									
Total	82	38	44	655	293	362	740	332	407
Black African	24	13	12	425	195	230	450	208	242
Other ¹	57	25	32	230	98	132	290	124	165
Other uncompensated work									
Total	52	20	32	685	311	373	740	332	407
Black African	26	11	15	424	197	227	450	208	242
Other ¹	26	*	17	261	114	147	290	124	165

¹ Other includes coloured, Indian/Asian, white and unspecified population groups. These groups are aggregated due to the small sample size.

Totals include unspecified voluntary activities.

Due to rounding numbers do not necessarily add up to totals.